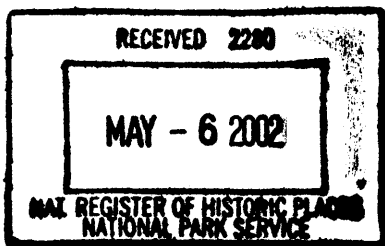


United States Department of the Interior
National Park Service



673

National Register of Historic Places
Registration Form

This form is for use in nominating or requesting determinations for individual properties and districts. See instructions in *How to Complete the National Register of Historic Places Registration Form* (National Register Bulletin 16A). Complete each item by marking "x" in the appropriate box or by entering the information requested. If an item does not apply to the property being documented, enter "N/A" for "not applicable". For functions, architectural classification, materials, and areas of significance, enter only categories and subcategories from the instructions. Place additional entries and narrative items on continuation sheets (NPS Form 10-900a). Use a typewriter, word processor, or computer, to complete all items.

1. Name of Property

historic name Silver Creek Youth Camp, Silver Falls State Park

other names/site number Silver Falls State Park Youth Camp; Silver Falls State Park YMCA Camp

2. Location

street & number 20024 Silver Falls Highway [] not for publication

city or town Sublimity [X] vicinity

state Oregon code OR county Marion code 047 zip code 97385

3. State/Federal Agency Certification

As the designated authority under the National Historic Preservation Act, as amended, I hereby certify that this [X] nomination [] request for determination of eligibility meets the documentation standards for registering properties in the National Register of Historic Places and meets the procedural and professional requirements set forth in 36 CFR Part 60. In my opinion, the property [X] meets [] does not meet the National Register criteria. I recommend that this property be considered significant [] nationally [X] statewide [] locally. ([] See continuation sheet for additional comments.)

Jane Hamish April 29, 2002
Signature of certifying official/Title /Deputy SHPO Date

State or Federal agency and bureau

In my opinion, the property [] meets [] does not meet the National Register criteria. ([] See continuation sheet for additional comments.)

Signature of certifying official/Title Date

State or Federal Agency and bureau

4. National Park Service Certification

- I hereby certify that the property is:
- entered in the National Register.
[] See continuation sheet.
- [] determined eligible for the National Register.
[] See continuation sheet.
- [] determined not eligible for the National Register.
- [] removed from the National Register.
- [] other, (explain): _____

Edson H. Beall Signature of Keeper Date of Action 6/20/02

5. Classification

Ownership of Property

(Check as many boxes as apply)

Category of Property

(Check only one box)

Number of Resources within Property

(Do not include previously listed resources in the count.)

- private
- public - local
- public - State
- public - Federal

- building(s)
- district
- site
- structure
- object

Contributing	Non contributing	
47	7	buildings
6	8	sites
1	1	structures
54	16	objects
		Total

Name of related multiple property listing

(Enter "N/A" if property is not part of a multiple property listing.)

N/A

Number of contributing resources previously listed in the National Register

None

6. Function or Use

Historic Functions

(Enter categories from instructions)

Current Functions

(Enter categories from instructions)

RECREATION & CULTURE: outdoor recreation

RECREATION & CULTURE: outdoor recreation

7. Physical Description

Architectural Classification

(Enter categories from instructions)

National Park Service Rustic

Materials

(Enter categories from instructions)

foundation Concrete; Stone; Log
 walls Wood; Douglas fir, cedar shake/shingle siding
 roof Douglas fir and cedar shakes and shingles
 other Stone

Narrative Description

(Describe the historic and current condition of the property on one or more continuation sheets.)

Please see Continuation Sheet

**United States Department of the Interior
National Park Service**

National Register of Historic Places Continuation Sheet

Section number 7 Page 1

Silver Creek Youth Camp, Marion Co., Oregon

Summary

The Silver Creek Youth Camp is located in the western foothills of the Cascade Range along State Highway 214, about 26 miles east of Salem in Marion County. Now part of the 8,706 acre Silver Falls State Park, Oregon's largest state park, Silver Creek Youth Camp was originally established on land that was separate from the State park holdings. The Camp meets National Register Criterion A for its association with President Franklin D. Roosevelt's New Deal-era programs, some of which were implemented to provide improvements to parks systems while providing jobs during the Depression years.

It also meets National Register Criterion C for its design merit as an excellent and nearly intact example of the parks planning and group camp development methodology that was being promulgated by the National Park Service during the 1930s. Features that contribute to this include the site's natural systems and features, the spatial organization of the camp, the cluster arrangement of the camp buildings, the arrangement of the circulation system, the buildings and structures, the constructed water features, and the viewshed. Architecturally, the use of the National Park Service Rustic style adds to this Criterion C significance.

An area encompassing approximately 206 acres is being nominated as a historic district. This area includes wooded and open spaces that provide the setting for the 54 historic contributing and 16 Non-Historic, Non-Contributing but compatible features within the Camp. The period of significance for the camp is from the beginning of construction in 1936, to final completion of all buildings and structures and transfer of the Camp to the State of Oregon in 1947.

During the Roosevelt Administration in the late 1930s, the Emergency Relief Administration, in orchestration with state parks organizations and the National Park Service, implemented the Recreation Demonstration Area (RDA) concept with the intent of redeveloping marginal, poorly managed or overused lands for recreational purposes. The Silver Creek RDA was established in 1934, for the purpose of developing recreational facilities for youth living in urban areas. The Emergency Relief Administration, the National Park Service, the Works Progress Administration, and the Oregon Highway Commission were key players in the establishment and subsequent development of the land for recreation.

The Silver Creek Youth Camp is one of four organized group camp facilities that were planned to be constructed in the Silver Creek RDA, located immediately adjacent to (southeast of) the Silver Falls State Park holdings. Silver Creek (Camp 1-C), Howard Creek (2-C), Smith Creek (Camp 3-C) and Lower Silver Creek (4-C) Camps were all proposed for construction, though only Silver Creek and Smith Creek Camps were realized due to limited funding. Smith Creek Camp has been significantly altered by modern development and upgrades, and therefore, of the four, only Silver Creek Youth Camp is being nominated for listing in the National Register.

Silver Creek RDA was one of 46 RDAs in the United States, and one of only two built west of the Rocky Mountains. The other was the Mendocino Woodlands RDA in Mendocino County, California, which is listed in the National Register and as a National Historic Landmark. A number of New Deal agencies were traditionally involved in the development of these projects, with the National Park Service providing the overall technical supervision, and the Civilian Conservation Corps (CCC) and the Works Progress Administration (WPA) providing the labor. In the case of Silver Creek, the WPA provided all the labor necessary for construction of the RDA, although the CCC was involved in other projects in

United States Department of the Interior
National Park Service

National Register of Historic Places Continuation Sheet

Section number 7 Page 2

Silver Creek Youth Camp, Marion Co., Oregon

the nearby State Park.¹ The Camp has been utilized annually for summer youth recreation programs by the Salem Young Men's Christian Association (YMCA) since 1938.

Setting

The Silver Creek Youth Camp area is set in a small valley, traversed by South Fork Silver Creek and Bear Creek. The elevation within the nominated area ranges from approximately 1400 to 1800 feet above sea level. The wet climate of the western Cascades produces a lush natural growth of second growth Douglas fir, alder and vine maple. Other vegetation includes Sitka spruce, Western Red cedar, Western White pine, and Pacific yew. Middle story species include Red alder, Madrone, Big Leaf maple, Vine maple, Willow, Western or Pacific dogwood, Black cottonwood, Oregon crabapple, wild cherry, and Golden chinquapin. A wide variety of low growing and ground cover growth comprises the natural understory, with the exception of the central playing fields, which is sown with grass.

Within this natural setting, there are a total of 70 resources: 54 "Historic Contributing" features and 16 "Non-Historic Non-Contributing" but compatible features. Included in the count of resources are buildings, structures, objects, and landscape elements. The dominant central feature is a large, centrally located open playing fields and swimming pond, around which four cabin clusters and the administration buildings are distributed.

The following resources are found in the Silver Creek Youth Camp Historic District area:

Administration Area:

1. Administration Building (Camp Office) (1988), Non-Historic, Non-Contributing
2. Dining Hall and Kitchen Building (1937), Historic Contributing
3. Recreation Building (1936-1938), Historic Contributing
4. Crafts Building (1939), Historic Contributing
5. Cooks Cabin (1947), Historic Contributing
6. Central Washhouse (1937), Historic Contributing
7. Infirmary (1938), Historic Contributing
8. Staff Quarters (1936-1938), Historic Contributing
9. Help Quarters (1936-1938), Historic Contributing
10. Swimming Pool Latrine (1936-1938), Historic Contributing

Cabin Groups:

Bear Creek (1936-1938)

11. Unit Lodge, Historic Contributing
12. Leader Cabin #L-1, Historic Contributing
13. Leader Cabin #L-2, Historic Contributing
14. Cabin #1, Historic Contributing
15. Cabin #2, Historic Contributing
16. Cabin #3, Historic Contributing
17. Cabin #4, Historic Contributing

¹ During the New Deal era, the Federal government was involved in work in 45 of Oregon's State Parks. (Merriam, Lawrence C. Jr., *Oregon's Highway Park System, 1921-1989: An Administrative History* (Salem, Oregon: Oregon Parks and Recreation Department, 1992), 28.

United States Department of the Interior
National Park Service

National Register of Historic Places
Continuation Sheet

Section number 7 Page 3

Silver Creek Youth Camp, Marion Co., Oregon

- 18. Cabin #5, Historic Contributing
- 19. Cabin #6, Historic Contributing
- 20. Washhouse/Latrine, Historic Contributing
- 21. Wood Shed, Non-Historic, Non-Contributing

Hillside (1936-1938)

- 22. Unit Lodge, Historic Contributing
- 23. Leader Cabin #L-1, Historic Contributing
- 24. Leader Cabin #L-2, Historic Contributing
- 25. Cabin #1, Non-Historic, Non-Contributing (built 2000)
- 26. Cabin #2, Historic Contributing
- 27. Cabin #3, Historic Contributing
- 28. Cabin #4, Historic Contributing
- 29. Cabin #5, Historic Contributing
- 30. Cabin #6, Historic Contributing
- 31. Washhouse/Latrine, Historic Contributing
- 32. Wood Shed, Non-Historic, Non-Contributing

Trickle Falls (1936-1938)

- 33. Unit Lodge, Historic Contributing
- 34. Leader Cabin #L-1, Historic Contributing
- 35. Leader Cabin #L-2, Historic Contributing
- 36. Cabin #1, Historic Contributing
- 37. Cabin #2, Historic Contributing
- 38. Cabin #3, Historic Contributing
- 39. Cabin #4, Historic Contributing
- 40. Cabin #5, Historic Contributing
- 41. Cabin #6, Historic Contributing
- 42. Washhouse/Latrine, Historic Contributing
- 43. Wood Shed, Non-Historic, Non-Contributing

Hemlock (1938-39)

- 44. Unit Lodge, Historic Contributing
- 45. Leader Cabin #L-1, Historic Contributing
- 46. Leader Cabin #L-2, Historic Contributing
- 47. Cabin #2, Historic Contributing
- 48. Cabin #3, Historic Contributing
- 49. Cabin #4, Historic Contributing
- 50. Cabin #5, Historic Contributing
- 51. Cabin #6, Historic Contributing
- 52. Un-numbered Cabin, Non-Historic, Non-Contributing (built 1970)
- 53. Washhouse/Latrine, Historic Contributing
- 54. Wood Shed, Non-Historic, Non-Contributing

United States Department of the Interior
National Park Service

National Register of Historic Places Continuation Sheet

Section number 7 Page 4

Silver Creek Youth Camp, Marion Co., Oregon

Circulation System (1935-1939):

- 55. Roads & Parking, Historic Contributing
 - a. Park Road
 - b. North Service Road
 - c. South Service Road
 - d. Concrete Curbing and Parking Area
- 56. Trails, Historic Contributing
 - a. North Falls Trail
 - b. South Silver Creek Trail
 - c. Bear Creek Trail
 - d. Concrete steps
- 57. Bridges
 - a. North Service Road (Silver Creek) Auto Bridge (1970s), Non-Historic, Non-Contributing
 - b. Council Circle (Silver Creek) Footbridge (1970s), Non-Historic, Non-Contributing
 - c. Swimming Pond Footbridge (original 1936-38; altered 1970s), Historic Contributing
 - d. Bear Creek Footbridge (1970s), Non-Historic, Non-Contributing
 - e. Dining Hall (Silver Creek) Footbridge North (1970s), Non-Historic, Non-Contributing
 - f. Trickle Falls (Silver Creek) Footbridge (1970s), Non-Historic, Non-Contributing
 - g. Hemlock (Silver Creek) Footbridge (1970s), Non-Historic, Non-Contributing

Landscape Features and Built Structures:

- 58. Playing Field (1936-1938), Historic Contributing
- 59. Swimming Pond and Dams (1936-1938), Historic Contributing
- 60. Swimming Pool (1955), Non-Historic, Non-Contributing
- 61. Water Reservoir (original 1938; alteration date unknown), Non-Historic, Non-Contributing
- 62. Council Circle (1936-1938), Historic Contributing
- 63. Bell (date unknown), Non-Historic, Non-Contributing
- 64. Flagpole (date unknown), Historic Contributing

The Camp Layout

The planning and development of the Silver Creek Youth Camp was typical of National Park Service (NPS) designs in Recreational Demonstration Areas nationwide. Utilizing design elements and materials that fit the local topography and landscape, plans were developed by NPS, and carried out with NPS and State parks oversight and WPA labor. The ideals of National Park Service landscape and building design were compiled and described by Albert Good in the work *Park and Recreation Structures*, published first in 1935, with the more comprehensive three-volume edition published in 1938. This work brought together the landscape and architectural design principles of many of the National Park Service's premier architects, landscape architects, and planners. Many of the design concepts employed at Silver Creek closely follow these standards. (Figs. 2 and 3)

**United States Department of the Interior
National Park Service**

**National Register of Historic Places
Continuation Sheet**

Section number 7 Page 5

Silver Creek Youth Camp, Marion Co., Oregon

Originally designed to accommodate 96 campers, 16 leaders, and 9 administrative staff, the layout of Silver Creek Youth Camp consists of a central administrative area containing ten buildings, with four cabin groups of ten buildings each. (Figure 3) The layout of the camp itself is perhaps one of its most significant features, since it so closely follows the ideals of NPS group camp organization. This includes not only the design and integrity of the individual buildings and structures, but the way in which these single features are designed and located in close relation to the natural landscape and to each other. (Photos 5, 9, 21,22) "Very definitely the number and size of the camp buildings and the relationship between them are the camp lay-out in fact, and any discussion of the buildings individually is difficult without some preliminary consideration of them as a whole." (Good III 1938, 109)

The design of the camp layout was governed by a variety of considerations, including site factors such as topography, climate and natural features; and the social factors of funding, the community to be served, and whether the camp was to be used full- or partial-season occupancy (Good III 1938, 110-111). The spatial arrangement of administration buildings, the clustering of cabin groups and their placement around the central administration area, the spacing of buildings and features, and their interplay with the topography and waterways form a system of features that integrates naturally with the wooded setting without detracting from it. It is this interplay between built features and natural elements that gives the Camp its sense of place.

The Built Features

Contributing to the significance of the overall historic landscape and layout of the district are the individual buildings and structures. The use of the rustic style further ties the built features to their wooded setting. The scale of the buildings and structures, the materials used, and the craftsmanship that was employed in their construction all contribute to a compatibility, both material and visual, that is the hallmark of the rustic style. That style, as it was being promulgated in the late 1920s through the early 1940s by the National Park Service, utilized native materials, retained a modest scale relative to the surrounding topography and landscape, and conveyed the appearance of the work of "pioneer craftsmen." (Good I 1938, 5)

There are two distinct categories of buildings in the district: the Administration Area and the Cabin Groups. Other built features include the Circulation System, comprised of roads, trails, and bridges, and Structures and Other Built Features. Each group and its respective elements is discussed in more detail below.

Administration Buildings

All of the Administration Area buildings are sited just along the edge of the treeline along the western edge of the valley overlooking the play area. Their dark brown color, use of native and minimally processed materials, horizontal emphasis and relatively small scale allows them to easily blend into the landscape.

According to the National Park Service, "...the ideal location for the administrative center is one easily reached by automobile from the outside and by foot from the rest of the camp. The entrance road to the camp should penetrate a minimum distance, to a small parking area for automobiles near the administration building." (Good III 1938, 112) This design theory was applied

United States Department of the Interior
National Park Service

National Register of Historic Places Continuation Sheet

Section number 7 Page 6

Silver Creek Youth Camp, Marion Co., Oregon

at Silver Creek, and although the administrative area is not the geographical center of the camp, it is located in such a way as to be reached with ease by foot from all cabin groups, and by auto from outside the camp.

1. *Administration Building/Camp Office, (1988)*
Non-Historic Non-Contributing

According to NPS design recommendations, the Administration Building (or Camp Office) was, in essence the town hall of the camp. The ideal building incorporated rooms for camp director's office and the camp store, and was equally accessible by car or on foot. (Good III 1938, 112-121) The original 1938 Administration Building at Silver Creek burned in the 1980s. In 1988 the Oregon Parks and Recreation Department constructed a new building on the original stone foundation, with a similar floor plan. (Photo 23) Built on a slope near the center of the camp overlooking the playing field/meadow, swimming pond and modern swimming pool, the Administration building is irregular in plan, measuring roughly 40' by 25'. There is an extended bay on the southeast corner, and a porch that wraps around the south and west elevations. The single story wood frame building is clad in wood shakes, and has a gable roof also covered with split cedar shakes. The building is built into a slope that creates a large storage area along the north elevation. Banks of multi-pane casement windows provide ample light to the interior offices and camp store. A stone fireplace is located on the south end wall. The new building includes a private office for the camp director, an ante room with space for files and a desk for a clerk, and a room for a camp store.

Although this building was constructed in 1988, it respects many of the tenets set forth in Good's work, including its use of materials, overall design, and scale, and room function. In sum, the new building is compatible with the site in use of materials and design, and does not detract from the overall character of the district. Because of its recent construction date, it is considered a "Non-Historic Non-Contributing" feature in the district.

2. *Dining Hall & Kitchen (1936-38)*
Historic Contributing

"Desirable Objectives in devising a plan for a dining lodge are wide and pleasing views from the dining room, ample light and cross ventilation for both dining room and kitchen, and a relationship between these two units which will result in a service of maximum efficiency with a minimum of steps. The T-shaped plan accomplishes these objectives..." (Good III 1938, 161) Other key features described by Good included many large screened openings, a fireplace, chairs or benches independent (unattached) to the tables, and two doors between the dining hall and the kitchen. The Dining Hall and Kitchen Building at Silver Creek clearly follows these recommendations.

Located to the south of the Administration Building, the one-story Dining Hall & Kitchen Building overlooks the meadow and pond, facing northeast. (Photos 7, 24) The dining hall portion of the T-shaped building measures 22' by 81', with a seating capacity of 120. The kitchen wing measures 25' by 35'. (Photo 25) Like the other buildings in the camp, the Dining Hall has log, timber, and stud wall framing and cedar shake siding. The intersecting gable roof is clad in cedar shingles. There are two massive stone exterior chimneys on the east and west ends of the dining room, and a central stone chimney rising from the kitchen wing. A set of central stone stairs provides entrance to the dining room from the east elevation, and there are also stone steps leading to entrances on the

**United States Department of the Interior
National Park Service**

**National Register of Historic Places
Continuation Sheet**

Section number 7 Page 7

Silver Creek Youth Camp, Marion Co., Oregon

east and west ends of the dining room. These entrances have been altered by the removal of the original open log railings.

The east wall is dominated by large banks of multi-paned wood sash windows, which allow natural light into the room, and allow an expansive view of the playing field and swimming pond. The furniture in the dining hall consists of tables and benches of rustic character appropriate to the Rustic style design intent. (Photos 8, 26) The tables and benches appear to be original, and were likely designed by the National Park Service Regional office in San Francisco (Buckley 1938). Other interior features include the stone fireplaces on the north and south ends, wood floors, exposed truss and beam ceilings, and modern but compatible hanging light fixtures dating from the mid-1970s. (Photo 27)

The kitchen wing has windows along the north and south elevations, providing cross-ventilation and light from both directions. The exterior remains substantially intact, retaining much of its original exterior details, though a single story, shed-roof addition has been constructed on the southwest end of the building. The addition is clad in wood shakes, has a modestly-pitched shed roof with wood shingles, and several small slider windows. A small covered porch provides shelter for loading and unloading supplies. The interior has been altered to meet modern kitchen health standards. While it detracts somewhat from the historic appearance of the south and west elevations, particularly from the parking area, the addition does not significantly diminish the building's overall architectural character.

3. *Recreation Building (1936-38)*
Historic Contributing

The recreation building ideally included a fireplace, a portable or permanent stage for amateur entertainment, a wide veranda, and tables, benches and seating furniture suitable to its varied uses (Good III 1938, 144).

The Silver Creek Recreation Lodge is located north of the Administration Building, and faces the open meadow toward the Swimming Pond to the southeast. (Photo 28) The one-story building is irregular in plan shape, and has a concrete foundation with stone terraces on the south and east elevations. The log and timber frame is clad in cedar shake siding, and the gable roof has cedar shake roofing. In the gable ends are paired sawn decorative brackets. The banks of multi-paned windows on the east elevation, as well as the double french doors with sidelights and transoms, provide ample light to the interior. At the north end of the building is an exterior stone chimney.

The front entrance porch on the east elevation has been slightly altered by the removal of the original log railing, and its replacement with a closed stone railing that appears as a vertical extension of the stone terrace. This change does not significantly affect the overall historic integrity of the building.

4. *Crafts Building (1939)*
Historic Contributing

"The [Craft] building is normally a simple structure with plenty of light a first requirement. Its equipment will include work benches and tables, shelves, cupboards, even individual lockers for

United States Department of the Interior
National Park Service

National Register of Historic Places Continuation Sheet

Section number 7 Page 8

Silver Creek Youth Camp, Marion Co., Oregon

tools, materials, and work in progress. A sink with running water is necessary; a fireplace is desirable." (Good III, 146)

Many of these requirements were met by the Craft Shop at Silver Creek. (Photos 6, 29) The rectangular, single story, peeled log frame building measures 22' by 37'. It has an asymmetrical, low pitched gable roof clad in cedar shakes. The roof extends slightly along the east elevation to cover a portion of the wrap-around flagstone terrace, where a narrow work counter has been installed along the exterior wall to provide a painting and work space for campers. Similar narrow work counters are also found along the east and west walls inside the building. This portion of the roof is supported by round log posts and beams with diagonal bracing. In the process of repair, some of the original log truss work was replaced. (Miloe 1997) The building is clad in hand-split random coursed cedar shakes finished with rake boards on the gable ends. An end-wall stone chimney and fireplace is located on the south elevation. The primary window type is multi-paned wood sash arranged in banks along the east and west elevations.

With the exception of the counter spaces, no other work spaces or furniture was evident inside the building. (Photo 30) Other interior features include the stone fireplace, wood floors, an open beam ceiling, and mid-1970s hanging light fixtures.

5. *Cooks Cabin (c 1947)*
Historic Contributing

This building was constructed circa 1947 to provide better housing that was closer to the Dining Hall/Kitchen building for the women who prepared meals for the campers and other staff. Previous to the construction of the Cooks Cabin, cooking staff was housed in the Helps Cabin up the hill to the northwest (Kells, 1947). According to a letter from the YMCA, C.A. Kells, General Secretary had talked to the cooking staff "... many times about getting away from the kitchen to relax, but they always reply 'it is too hard to get to the cabin,' and they just do not go. These women work long hours every day, and we would get better service if they could get out of the kitchen." (Kells, 1947) The building was proposed to be completed by September 1, 1947 with materials that were produced on site six years prior (1941), and with YMCA labor. (Kells, 1947; Buckley, 1947).

According to Good, employee's living quarters were to be "...apart from those of the campers and staff members, yet should be located convenient to the central washhouse... and to the dining lodge, in which their work centers." (Good III 1938, 175)

The Cook's Cabin is located immediately to the south of the Dining Hall along the South Service Road. The "front" of this small rectangular building actually faces east, away from the road, with a footpath leading to the Dining Hall. A modest building clad in cedar shakes, the Cooks Cabin has a frame structural system, a side-gable roof, and a wood post and concrete pier foundation. (Photo 31) An intersecting gabled porch on the east elevation displays log elements in the porch rail detail. Fenestration is asymmetrical, consisting of multi-pane wood casement sash. The interior of this building was inaccessible at this writing.

United States Department of the Interior
National Park Service

National Register of Historic Places Continuation Sheet

Section number 7 Page 9

Silver Creek Youth Camp, Marion Co., Oregon

6. *Central Washhouse (1936-38)*
Historic Contributing

The Central Washhouse was a standard feature in group camping facilities design, and provides showers, which are not included in the Unit Washhouses in each cabin group. The Central Washhouse is utilized by both male and female campers and staff. Located on the west side (upper slope) of the South Service Road near the Dining Hall, the Central Washhouse is a single story log framed building with a concrete foundation, and a side-gable roof clad in cedar shingles, and cedar shingle siding. (Photo 32) Concrete steps provide access to each end of the building, for male and female campers. Single six-pane sash windows flank a central door on the east elevation.

7. *Infirmery (1936-38)*
Historic Contributing

Ideally, the infirmery building in a group camp was to be removed from the sleeping units and other sources of noisy activity. According to NPS standards, the building was to include space for a first aid room, a ward, and isolation room, a bathroom, and sleeping quarters. (Good III, 123) A 1940 Camping Report photo caption describes the building: "The Infirmery is removed some distance from other camp structures and consists of four small rooms and a bath. It provides for nurse's room, dispensary, an isolation room and a two bed ward." (Buckley 1946, photo caption)

The Infirmery at Silver Creek is located just south of the Cooks Cabin, between the Administration Building and Hemlock Unit along the South Service Road, somewhat isolated from the camp units, but in reasonable proximity to other administration buildings. (Photos 14, 33) Set on a concrete foundation, the building is of a shallow cross plan, with peeled log framing, a gable roof, and wood shake siding. The windows consist of multi-paned casement sash arranged in threes with screens. A stone chimney rises from the center of the gable roof. Small porches with pole rail details on the northeast and northwest corners of the building mark entrances.

Today the interior features of the Infirmery building have been modernized, but the original floor plan is intact. The dispensary room, where medical care is given, includes a sink, closet, shelves and cabinets for supplies and equipment. The building also includes an isolation room, a sleeping ward for multiple campers, a bathroom, and sleeping quarters for the doctor or nurse in charge (Miloe 1997).

8. *Staff Quarters (1936-38)*
Historic Contributing

The Staff Quarters and Help Quarters buildings are virtually identical in design. A 1938 letter to Project Supervisor Harry Buckley describes the plans of the Staff Quarters and the Help's Quarters as "two Counselors' Cabins combined." (Kittredge, 1938) Both buildings are located on the slope of the hill on the west side of the South Service Road, near the Administration Area. The Staff Quarters, hidden in a wooded area immediately west of the administration parking area, is accessed from the administration area by a set of concrete stairs and a dirt footpath. (Photos 13, 34) The building has a rectangular "saddlebag" or "dogtrot" plan – two rooms separated by an open breezeway – all covered by a gable roof. The log-framed building sits on a concrete foundation and is clad in wood shakes with vertical board siding above the window sill level. Cedar shingles also

United States Department of the Interior
National Park Service

National Register of Historic Places Continuation Sheet

Section number 7 Page 10

Silver Creek Youth Camp, Marion Co., Oregon

cover the roof. The breezeway is detailed with log railing. The windows are paired, four-paned wood sash with operable solid wood shutters. Each of the rooms originally accommodated two beds, and now accommodate four (two bunkbeds). The rustic interior has open walls and ceiling with exposed log and timber framing, and wood floors.

9. *Help Quarters (1936-38)*
Historic Contributing

The Help Quarters are located west of the Central Washhouse on the west side of the South Service Road. It is also accessed by a set of concrete stairs and a footpath up the steep hill. (Photo 35) Like the Staff Quarters, the building has a saddlebag plan, peeled log framing system, and wood shake and vertical board siding, and a shake roof. The foundation is concrete. The paired, four-paned wood sash windows have operable solid wood shutters. Each of the rooms originally accommodated two beds, and now accommodate four (two bunkbeds). The rustic interior has open walls and ceiling with exposed log and timber framing, and wood floors.

10. *Swimming Pool Latrine (1936-38)*
Historic Contributing

The swimming pool latrine is nestled in the trees northwest of the 1955 swimming pool. The small shallow U-shaped, log-framed building is clad in wood shakes. (Photo 36) The gable roof has broad overhanging eaves with wood shakes. The two entrances on the west elevation are screened from view by modern lattice wood screening, and are separated by a solid exterior wall. The roof slope on the west side extends to cover a flagstone terrace at these entries.

Cabin Groups

Scattered around the periphery of the centrally located Administration Area are each of the four cabin groups, which are located in the woods nearby, but not visible from the central area. The distances between the cabin groups, and their proximity from the Administration area, were determined based on the existing topography of the site, the need for privacy, and the exposure of the cabins to sunlight and shade. Ease of use by the occupants, as well as visual compatibility with the environment were factors in the arrangement of the cabins within their respective groups. Subject to site condition, it was recommended that cabins be no more than 50 feet apart, and not more than 150 from the Wash House/Latrine (Good III 1938, 110). Visual compatibility with the site was also a factor in placement of the buildings.

Each cabin group is unique in topography and physical layout, but all share the same log construction style and building floorplans. All groups are located near creeks, and all have footpath access to the Administration Area. The buildings that comprise each group include 1 Unit Lodge, 2 Leaders Cabins, 6 Campers Cabins, and 1 Washhouse. Each group was originally designed

to accommodate 24 campers and 4 group leaders. The use of bunk beds in the Leaders' and Campers Cabins has allowed an increase in accommodation to 48 campers and 8 group leaders.

**United States Department of the Interior
National Park Service**

**National Register of Historic Places
Continuation Sheet**

Section number 7 Page 11

Silver Creek Youth Camp, Marion Co., Oregon

The integrity of each of the cabin groups is high, with alterations being made in response to the need for modern plumbing, repair to deteriorating structural members, or roof repairs. Where more significant alterations have taken place, they are discussed in each of the following Cabin Group descriptions.

Typical Unit Lodge

The Unit Lodge forms the hub of each cabin group, providing a central meeting place ideally suited to provide approximately 20 square feet for each camper in the group. (Good III 1938, 143)

"A room 20 feet wide and 30 feet long has convenient proportions. As with most structures for camper' use, the fireplace is its most important feature and should of generous size. Closet and cupboard space will useful for the storage of equipment at all seasons. If the full potentialities of the unit lodge are to be realized, a simple outdoor kitchen shelter, where meals can be prepared, must be erected nearby or, better still, attached to it. It is recommended that the kitchen, if joined to the unit lodge, be open on three sides... The stove should be of masonry of the campstove pattern, built integrally with the masonry chimney..." (Good III 1938, 143)

The unit lodges at Silver Falls originally had identical floor plans. (Photos 11, 37-40) Measuring 20' by 50' overall (including the kitchens) the buildings each have a concrete foundation. The gable roof is covered in wood shingles, and the peeled log structural system is also clad in wood shakes. The gable roof extends over the kitchen area, which was originally intended to be open on three sides, with the kitchen stove and the large interior fireplace back-to-back. The arched-opening stove, flat-arch fireplace and chimney display large random-laid stonework. The kitchen terrace, or porch, also has a stone floor. The kitchen porch rails, where extant, are open rails consisting of log members.

The interior of the Unit Lodge has an open ceiling, displaying the log truss work, open stud walls, and a wood floor. The ceiling light fixtures are not original.

The Unit Lodges have been altered to varying degrees, with the building at Trickle Falls retaining the highest degree of historical integrity, and the lodge at Hemlock having been altered by the enclosure of the kitchen. (Photo 41) All are considered "Historic Contributing" resources.

Typical Leaders Cabin

There are two Leaders Cabins in each group, for a total of 8 in the district. Identical in original design intent, all structural elements from the sill logs to the roof on each of these small, 12' by 15', one story buildings are round peeled logs. (Photos 15, 42) The foundation is composed of four concrete piers with peeled log stringers with a pentagonal chamfer at each end. The exterior walls and roof are clad in cedar shakes. The low pitched gable roof has broad overhanging eaves, and extends over the front porch. The buildings are elevated slightly above grade, requiring two small steps of puncheon logs leading to the porch, which has a simple open rail of peeled logs. The window openings, basically an open band around the upper one-third of each wall below the eave, have newer wood-framed screens with vertical framing members. Originally these openings had simple square and triangular framed screens that fit the wall openings between the structural members. The openings now have screens with newer frames that include vertical members.

**United States Department of the Interior
National Park Service**

**National Register of Historic Places
Continuation Sheet**

Section number 7 Page 12

Silver Creek Youth Camp, Marion Co., Oregon

There are no glazed windows in any of the Leaders Cabins. The single central front door is also screened in the upper half.

The interior ceiling and walls are open, revealing the structural elements of the building walls and roof. The floor is wood tongue and groove boards. The Leader Cabins were originally intended to sleep two, and with the later addition of bunk beds, now accommodate four campers. The metal-frame bunkbeds date to approximately the 1940s. The small wood board closet/dresser in each cabin appears to be of original construction. With only minor changes, all of the Leaders Cabins are "Historic Contributing" resources.

Typical Campers Cabin

Six Campers Cabins are included in each group, for a total of 24 in the district. Utilizing identical floor plans, measuring 12' by 18' overall, they are simple, one story, front-gabled buildings without porches, and were originally designed to accommodate four campers each. (Photos 10, 43-46) Bunkbeds have since been installed and the cabins now accommodate eight campers. Like the Leader Cabins, these buildings display log structural elements and cedar shake siding and roofing. The window openings, basically an open band around the upper one-third of each wall below the eave, have newer wood-framed screens with vertical framing members. Originally these openings had simple square and triangular framed screens that fit the wall openings between the structural members. The single central front door is also screened in the upper half. Some in-kind maintenance and exterior repair has been done in order to keep the buildings functional, including roof repair, repair to entrance steps, siding repair or replacement where necessary, and sill log replacement or repair where necessary.

The interior ceiling and walls are open, revealing the structural elements of the buildings roof and walls. (Photo 47) The floor is tongue and groove wood boards. The metal-frame bunkbeds date to approximately the 1940s. The small wood closet/dresser in each cabin appears to be of original construction. All but two of the Campers Cabins are considered "Historic Contributing" resources.

Typical Unit (Cabin Group) Washhouse/Latrine

The Washhouse/Latrine buildings also follow identical floor plans, measuring 13' by 20' overall. There is one per cabin group, for a total of four in the district. As stated in *Park and Recreation Structures*, "The combined washhouse and latrine service a cabin group is desirably made a partially enclosed structure. One end is merely roofed over to shelter the wash basins or troughs, the other end is enclosed to house the toilets in stalls." (Good III 1938, 122)

This layout is what is found in each of the cabin groups at Silver Creek. Good further defines the design of the washhouse/latrine to have a concrete foundation and floor, which was carried out at Silver Creek. Showers were not included in any of the unit washhouses, as they are provided in the Central Washhouse near the Administration area.

These buildings too, display the gable roofs with wood shakes or shingles, peeled log framing and wood shake siding. (Photos 16, 48) Those at Bear Creek and Hillside are constructed on a slope, thus requiring more substantial concrete half-wall foundations with wood shake siding above. Those at

United States Department of the Interior
National Park Service

National Register of Historic Places Continuation Sheet

Section number 7 Page 13

Silver Creek Youth Camp, Marion Co., Oregon

Trickle Falls and Hemlock are built on flat ground, and thus have a normal concrete foundation with wood shake-clad walls.

The plumbing fixtures (sinks and toilets) in all Washhouses have been replaced with modern fixtures.

Typical Wood Shed

The woodsheds found in or near each cabin group were constructed in the 1970s, and are not original to the camp. (Photo 49) They are therefore "Non-Historic, Non-Contributing" buildings in the district. They are visually compatible wood buildings with concrete foundations, steeply sloped shed roofs, wood shake siding, and hinged wood doors.

"Bear Creek" Cabin Group (1936-38)

Resources #11-21

Unit Lodge, Historic Contributing (#11)
Leader Cabins #L-1 and L-2, Historic Contributing (#12, 13)
Camper Cabins #1-6 Historic Contributing (#14-19)
Washhouse/Latrine, Historic Contributing (#20)
Wood Shed, Non-Historic, Non-Contributing (#21)

The Bear Creek Cabin Group is located along the north bank of Bear Creek (a tributary to Silver Creek), at the loop that terminates the North Service Road. (Photo 50) The buildings are scattered up a hillside, with the Unit Lodge near the upper end of the group. A central path provides foot access to each building. The overall integrity of layout, materials, workmanship, setting and feeling remains intact in the Bear Creek Cabin Group.

The Bear Creek Cabin Group includes a Unit Lodge, two Leaders Cabins, six historic Campers Cabins, and a Unit Washhouse/Latrine. The layout of the group is intact, and all buildings are original and considered "Historic Contributing" features in the district.

Alterations to the buildings in this group appear to be limited to changes to the Unit Lodge. On this building, the kitchen porch railing has been removed, the original ice box has been removed, the kitchen stove hood and door are missing. One post in the kitchen porch has been replaced, gutters have been added, the roof has been repaired and some structural members replaced on the northeast end, some siding shakes have been replaced, and there is a new interior wood floor. (Miloe 1997) Repair and maintenance has been completed with compatible materials and design, and despite the changes, the building retains sufficient integrity to convey its original function and style, and is considered a "Historic Contributing" feature in the district.

"Hillside" Cabin Group (1936-38)

Resources #22-32

Unit Lodge, Historic Contributing (#22)
Leader Cabins #L-1 and L-2, Historic Contributing (#23 & 24)

United States Department of the Interior
National Park Service

National Register of Historic Places Continuation Sheet

Section number 7 Page 14

Silver Creek Youth Camp, Marion Co., Oregon

Camper Cabin #1, Non-Historic Non-Contributing (built 2000) (#25)
Camper Cabins #2-6, Historic Contributing (#26-30)
Washhouse/Latrine, Historic Contributing (#31)
Wood Shed, Non-Historic Non-Contributing (#32)

The Hillside Cabin Group is located along the North Service Road, just northeast of the auto bridge across Silver Creek. These buildings are scattered up a steep grade, with the Unit Lodge located at the bottom, and the cabins and Washhouse/Latrine located further up the steep hill behind it. (Photo 51) A series of footpaths provide access to the cabins.

The Hillside Cabin Group includes a Unit Lodge, two Leaders Cabins, five historic Campers Cabins, one Non-Historic camper cabin, and a Unit Washhouse/Latrine. The layout of the group is virtually intact. All buildings except for Camper Cabin #1 are original and considered "Contributing" features in the district. Cabin #1 is of new construction (2000), built to replace the original cabin damaged by a fallen tree. The original cabin was located northeast of the Unit Lodge; the new cabin is sited north of the Unit Lodge. Though visually compatible, this building is a "Non-Historic Non-Contributing" feature because of its age.

As with the Unit Lodge at Bear Creek, the Hillside Unit Lodge has been altered. The kitchen porch rail is missing, and the kitchen stove hood, door, and ice box have been removed. Repairs have been made to the kitchen porch posts, the roof has been repaired/replaced, and the interior floor is newer. Despite these changes, the building retains sufficient integrity to convey its original function and style, and is considered a "Historic Contributing" feature in the district.

"Trickle Falls" Cabin Group (1936-38)

Resources #33-43

Unit Lodge, Historic Contributing (#33)
Leader Cabins #L-1 and L-2, Historic Contributing (#34 & 35)
Camper Cabins #1-6, Historic Contributing (#36-41)
Washhouse/Latrine, Historic Contributing (#42)
Wood Shed, Non-Historic Non-Contributing (#43)

The Trickle Falls Cabin Group is located approximately 1/4 mile south of the Administration area along the South Service Road. This group is arranged on both sides of Silver Creek, with the Unit Lodge, Washhouse/Latrine, Leader Cabin #L-1 and Camper Cabins # 1 and 2 on the west side of the creek, and the remainder of the buildings on the east side. A newer concrete and lumber bridge provides access across the creek, and replaces the original log and concrete bridge.

The Trickle Falls Cabin Group includes a Unit Lodge, two Leaders Cabins, six historic Campers Cabins, and a Unit Washhouse/Latrine. The layout of the group is intact, and all buildings are considered "Historic Contributing" features in the district.

The roofing was restored on all buildings in this cabin group in 1998-1999 by University of Oregon Historic Preservation Program Field School participants. In addition, rafters, purlins, and sill logs were repaired or replaced in-kind as was necessary due to deterioration. Work was completed in-kind in workmanship and materials, and therefore did not impact the integrity of the individual buildings or the overall integrity of the group or district.

United States Department of the Interior
National Park Service

National Register of Historic Places Continuation Sheet

Section number 7 Page 15

Silver Creek Youth Camp, Marion Co., Oregon

The Trickle Falls Unit Lodge is virtually intact, with the exception of some repairs to the porch support posts. As with the Unit Lodges at Bear Creek and Hillside, the icebox and stove doors are missing, but the lack of these features does not significantly impact the integrity of the building.

"Hemlock" Cabin Group (1939)

Resources #44-54

Unit Lodge, Historic Contributing (#44)
Leader Cabins #L-1 and L-2, Historic Contributing (#45 & 46)
Camper Cabins #2-6, Historic Contributing (#47-51)
Camper Cabin, Unnumbered, Non-Historic Non-Contributing (built 1970) (#52)
Washhouse/Latrine, Historic Contributing (#53)
Wood Shed, Non-Historic Non-Contributing (#54)

The Hemlock Cabin Group is located at loop at the end of the South Service Road, approximately 1/2 mile from the Administration Area. (Photo 17) This was the last cabin group to be constructed, completed circa 1939 (Oregon Journal [1938], 4:1). The group is arranged roughly in a circle, with an small open expanse of grass around the Unit Lodge. A steel framed bridge on concrete abutments provides crossing over South Silver Creek and access to the South Silver Creek Trail. The flat and open nature of this grouping allows for a less defined circulation pattern, and paths are less defined here than at the other three cabin groups.

The Hemlock Cabin Group includes a Unit Lodge, two Leaders Cabins, five historic Campers Cabins, one Non-Historic camper cabin, and a Unit Washhouse/Latrine. The layout of the group is largely intact, though the landscape has been altered slightly by the clearing of some trees and brush. All but one building are considered "Historic Contributing" features in the district. This un-numbered camper cabin, though compatible in design and materials, was built in 1970 of sawn lumber, and is therefore considered "Non-Historic Non-Contributing." The cabin it replaced, Cabin #1, was originally located near the center of the site, and was destroyed by a tree fall in the early 1970s.

The Unit Lodge at Hemlock Camp is the most altered Unit Lodge in the nominated area. The entire kitchen porch has been enclosed. This alteration involved removal of the log railing and bench, the icebox, the sink and the shelves. While the exterior was finished in compatible split cedar shakes, the interior was significantly altered. The stone floor paving is now covered with poured concrete, and the walls and ceiling are covered with plywood veneer. The kitchen stove remains intact. Other alterations to this Lodge include partial enclosure of the fireplace opening, installation of a hot-water heater, and the addition of florescent lighting fixtures in the enclosed kitchen and the shelter. The building does retain enough integrity to convey its historic appearance and function, and is therefore classified as a "Historic Contributing" feature.

The Washhouse/Latrine has been altered by the enclosure of the gable end openings, the replacement of the original side windows with aluminum sliding sash, replacement of toilets and urinals, and new roofing. (Miloe 1997)

Although this Cabin Group has undergone some changes in design and materials, it continues to effectively convey its original design, layout, workmanship, function and significance through the remaining historic material.

United States Department of the Interior
National Park Service

National Register of Historic Places Continuation Sheet

Section number 7 Page 16

Silver Creek Youth Camp, Marion Co., Oregon

Circulation System

Historic Contributing, Resources #55-57

Roads and Parking (1936-38)

The road into Silver Creek Camp is 2.5 miles long, and was originally graded to a width of 16 feet within a 20-foot right-of-way. (Photos 3, 20) It was surfaced with base rock to a width of 14 feet, and has since been paved with asphalt (Buckley 1940, 16). According to the 1940 Master Plan Report, the "... policy of the road side treatment [had] been to design the roads so that a minimum of the vegetative cover [would] be removed. Outside of the minimum right of way lines, nothing [was] disturbed without the approval of the project Landscape Architect." (Buckley 1940, 16) Originally all roads had a gravel surface.

National Park Service philosophy was that the construction of roads should be kept to a minimum. At Silver Creek Camp, auto access to each camp is provided by roads. The entrance road was to penetrate a minimum distance, with a small parking area. The entrance road, known as Park Road (Resource #55a), has been altered by slight widening to a point approximately 1/2 mile from the Camp itself. (Photo 52) Parking at the Administration Area (Resource #55d) has been kept to a minimum, and the smaller service roads to the camps have been retained at what appears to be close to their original width. (Photos 53-57) The visual impact of the Administration parking area parking is kept to a minimum in part through the use of a central curbed island with Douglas firs and other natural growth.

In February 2001 the configuration of the Administration parking area was altered by the removal of vegetation and curbing, and the re-grading of the areas surrounding the original parking area to allow for larger vehicle access and turn-around.

The South Service Road (Resource #55c, Photo 55), which is basically an extension of the Park Road beyond the Administration Area, provides access to Trickle Falls and Hemlock Camps, with a circular turn-around at Hemlock (Photo 54). The North Service Road (Resource #55b, Photo 56) provides access off of the Park Road, across Silver Creek to Hillside and Bear Creek Camps (Photo 57). This road has been improved by asphalt pavement, but does not appear to have been widened with this improvement.

The Circulation System is counted as one "Historic Contributing" resource in the district.

Trails (1936-38)

Nearly 17.5 miles of trails provide access to various points around Silver Creek Camp. Original trails include the North Falls Trail (#56a), located along the hillside northeast of the main Camp facilities. (This trail passes by the water reservoir.) South Silver Creek Trail (Resource #56b, Photo 58) meanders along the southwestern bank of South Silver Creek from the playing fields, through Trickle Falls Camp, to the southern end of the South Service Road. The Bear Creek Trail (#56c) provides a path from the Bear Creek Camp to the Kitchen and Dining Hall. Other unnamed footpaths provide circulation in and between camps, to the Council Circle and to the Administration Area and play fields. Within the Administration area, there are sets of concrete steps (#56d) that lead from the road and parking area to dirt paths to the Help and Staff Quarters.

United States Department of the Interior
National Park Service

National Register of Historic Places Continuation Sheet

Section number 7 Page 17

Silver Creek Youth Camp, Marion Co., Oregon

The trail system was designed to give hikers "maximum enjoyment and the greatest possible variation in routes." (Buckley 1940, 17) The trails also served as fire protection trails. The general policy on trail building was to disturb as little vegetation as possible. Trails were limited to a width of solid earth of 18", the gradient to 10% on main trails, and 15% on minor trails (Buckley 1940, 18).

"The first development funds for any of the parks was \$3,000 for the construction of trails at Silver Falls. With the aid of a foreman I located the present trails." (Boardman 1954, 213)

The trail system is counted as one "Historic Contributing" resource in the district.

Bridges

The following bridges are located in the Silver Creek Youth Camp Historic District:

- 57a. North Service Road (Silver Creek) Auto Bridge (original 1936-38; altered/replaced 1970s) Non-Historic Non-Contributing
- 57b. Council Circle (Silver Creek) Footbridge (original 1936-38; altered/replaced 1970s) Non-Historic Non-Contributing
- 57c. Swimming Pond Footbridge (original 1936-38; altered 1970s) Historic Contributing
- 57d. Bear Creek Footbridge (original 1936-38; altered/replaced 1970s) Non-Historic Non-Contributing
- 57e. Dining Hall (Silver Creek) Footbridge (original 1936-38; altered/replaced 1970s) Non-Historic Non-Contributing (Photo 61)
- 57f. Trickle Falls (Silver Creek) Footbridge (1936-38; 1970s) Non-Historic Non-Contributing (Photo 60)
- 57g. Hemlock (Silver Creek) Footbridge (1936-38; 1970s) Non-Historic Non-Contributing (Photo 62)

While all of the bridges in the Silver Creek Youth Camp district appear to remain in their original locations, all have been altered. Originally of concrete, stone, and log construction, they have since been changed primarily through alterations to stringers, railings and decking. (Compare photo 12 with photos 60-62) Both the auto and footbridge railings now display sawn lumber members, rather than the log members of their original designs. The auto bridge has further been altered by the installation of steel culverts which were then partially faced with stonework. The date of this alteration is not known. The footbridge across South Silver Creek in the Hemlock Cabin Group has a steel handrail system that may date to the historic period, though research has not verified this. Because of these alterations, all of the bridges except for the Swimming Pond Footbridge, are considered "Non-Historic Non-Contributing" features in the district.

The abutments for the Swimming Pond Footbridge also function as a dam for the Swimming Pond. The stone elements of this bridge form a very visible part of the bridge, and are substantially intact. Because of the significant visual presence this bridge has in the landscape, its integration in the dam structure, and its relative integrity, it is considered a "Historic Contributing" feature in the district.

United States Department of the Interior
National Park Service

National Register of Historic Places Continuation Sheet

Section number 7 Page 18

Silver Creek Youth Camp, Marion Co., Oregon

Structures and Other Built Features

58. *The Playing Fields (1936-38)*
Historic Contributing

The playing fields, the centerpiece of the Camp, consist of approximately seven acres of open space informally divided into three fields by the swimming pond and the two streams that feed it. (Photos 9, 63, 64) According to the 1940 Master Plan Report, "... one field is kept open for general games, another is laid out as a baseball diamond, and the third is used for games which require permanent fixtures." The grading for these three recreational areas began as early as 1930, and was completed in 1938. All of the fields retain good integrity, and have not been encroached upon by vegetation or significant built development. The field on the east side of Silver Creek has been altered by the construction of the swimming pool in 1955. However, other alterations are minimal and the Playing Fields are largely intact.

59. *Swimming Pond (1936-38)*
Historic Contributing

One of the more notable features of the Camp is the open meadow accented by the large pond, which was originally built to be used for swimming. NPS recommended that the "...alteration of or artificial control of stream flow [was] to be rigidly avoided [except where there was] ...a shortage of facilities for water recreation." (Good II 1938, 119) The design and veneer was to strive for irregularity in plan and vertical section, and the surface treatment was to acknowledge the geology of the area (Good II 1938, 119).

Clearly the swimming pond as the center point of Silver Creek Youth Camp embraced these ideals. The pond is irregular in shape, with stone wall borders that exhibit the irregularity that lends the appearance of naturalness. (Photos 9, 5, 65-67) The pond was created by damming Silver Creek about 100 feet upstream from its confluence with Bear Creek (Photo 68), providing a small, clear lake to be used for aquatic activities (Buckley 1946, 12). Unfortunately, the swimming pond – "...although a beautiful landscape feature, [was] much too cold to conduct a satisfactory aquatic program." (Buckley 1946, 12)

The concrete portions of the dam structure remains in place today, and forms the abutments for the bridge across Silver Creek. (Photo 69) The perimeter of the pond is lined with random-laid stonework, and the northern end is marked by a wooden bridge with stone abutments and dam. This naturalistic swimming pool is approximately 120 feet long and 80 feet wide. The water was approximately eight feet deep beneath the diving board, which was originally located just northeast of the bridge. The board has been removed, but the mounts are still visible in the stonework.

60. *Swimming Pool (1955)*
Non-Historic Non-Contributing

The existing modern swimming pool was built in 1955 when it was determined that the cool temperatures of the swimming pond made it insufficient for summer swimming. (Photo 64) The rectangular white-plastered pool is located on the east side of the bridge and Silver Creek, and is

United States Department of the Interior
National Park Service

National Register of Historic Places
Continuation Sheet

Section number 7 Page 19

Silver Creek Youth Camp, Marion Co., Oregon

surrounded by a Cyclone fence. Since the structure was a later addition to the district, it is considered a "Non-Historic, Non-Contributing" feature.

61. *Water Reservoir (Original 1938; later alteration date unknown)*
Non-Historic Non-Contributing

The water supply for the camp was provided with the assistance of the Water Reservoir, located above the Bear Creek Cabin Group, on the hillside along the eastern edge of the camp. (Photos 18, 70) "Water... [was] taken from a tributary of Bear Creek, which is a tributary to the South Fork of Silver Creek, and run continuously into a 12, 000 gallon reinforced concrete reservoir. A 4 inch cast iron main with...laterals...serves the entire [Silver Creek Camp] area." (Buckley 1940, 20-21)

The site of the reservoir faces the playing fields, though the view of the reservoir and from the reservoir is obstructed by forest. The structure is built of poured concrete, and does not appear to be in use. As evident from historic photographs, the reservoir has been altered from its original appearance. Park plans and photographs suggest a square concrete structure with a wood framed hipped roof and clerestory windows. The structure that remains today is of irregular T-shaped plan, with a flat concrete top and no windows. A small door provides access to a small room on the east end of the structure. It is unclear from the records available whether the original reservoir was altered or rebuilt since its original installation. The current reservoir does not appear to be in use, and though it conveys its function, and appears to be in the location of the original reservoir, it is considered a "Non-Historic, Non-Contributing" feature in the district due to extensive alterations.

62. *Council Circle (Original 1938; alteration date unknown)*
Historic Contributing

"The campfire, lecture, or council circle or ring, as it is variously called, is merely a foregathering place in the open around the community campfire... It is almost a necessity in connection with an organized camp lay-out, serving as the hub of much of the activities program." (Good II 1938, 197) Typically located at least 1000 feet from the nearest building, the council circle site was chosen for its secluded, wooded setting devoid of distracting vistas (Good III 1938, 146).

The campfire itself was an essential component of the council circle, with other desirable features including "generally level terrain and surroundings suggestive of nature unmodified." The Council Circle at Silver Creek is located in the trees on the north end of the playing fields. Hidden from view, the Circle consists of a series of concentric benches made of half-logs arranged in an arc around the central fire pit. (Photos 19, 71) A speaking platform or stage faces the arcs of seating. The Circle was originally "...Constructed of 18 inch Douglas fir logs sawn in half and placed on sleepers. Seating capacity, 136 persons." (Buckley 1946, photo caption) The seating has since been replaced, and the configuration slightly more angular than that shown in historic photographs. Despite these changes, the Council Circle retains integrity of location, setting, and basic design and is therefore considered a "Contributing" feature in the district.

United States Department of the Interior
National Park Service

National Register of Historic Places Continuation Sheet

Section number 7 Page 20

Silver Creek Youth Camp, Marion Co., Oregon

63. *Bell*
Non-Historic Non-Contributing

The bell is located on the hillside west of the Administration Area parking area, near the flagpole. It is mounted on a wood frame support. The bell appears in historic photographs, and the existence of a bell at this location dates from the early years of the Camp. The original c 1940s bell was apparently stolen, and the current bell is a later replacement donated by the YMCA. At the time of this writing, no records or other information was available as to when these activities occurred. (Photo 72)

64. *Flagpole*
Historic Contributing

The flagpole is located on the hillside west of the Administration Area parking area. (Photo 72) The feature appears in historic photographs, but the actual age of the flagpole has not been uncovered to date. Preliminary research suggests that the pole may date to the WPA era. (Stormont 1997)

Missing Features

Markers - Historic photographs indicate markers at the entrance and along the Park road directing visitors to the various cabin groups. While there are numerous markers currently in the Camp providing direction to each cabin group, none of these appear to be original.

Light Fixtures - The ceiling light fixtures in the Administration Area buildings are not original.

Furniture - The original furnishings of the various buildings for the most part have been replaced. Exceptions are some of the early bunk beds and cabinets that remain in the Camper Cabins, and the furniture in the Dining Hall that appears to be original.

8. Statement of Significance

Applicable National Register Criteria (Mark "x" in one or more boxes for the criteria qualifying the property for National Register listing.)

- [X] A Property is associated with events that have made a significant contribution to the broad patterns of our history.
[] B Property is associated with the lives of persons significant in our past.
[X] C Property embodies the distinctive characteristics of a type, period, or method of construction or represents the work of a master, or possesses high artistic values, or represents a significant and distinguishable entity whose components lack individual distinction.
[] D Property has yielded, or is likely to yield, information important in prehistory or history.

Criteria Considerations (Mark "x" in all the boxes that apply.)

Property is:

- [] A Owned by a religious institution or is used for religious purposes.
[] B removed from its original location.
[] C a birthplace or grave.
[] D a cemetery.
[] E a reconstructed building, object or structure.
[] F a commemorative property.
[] G less than 50 years of age or achieved significance within the past 50 years.

Narrative Statement of Significance (Explain the significance of the property on one or more continuation sheets.)

Areas of Significance (Enter categories from instructions.)

Entertainment/Recreation

Conservation

Landscape Architecture

Social History

Period of Significance

1936-1947

Significant Dates

1936-1947

Significant Person

(Complete if Criterion B is marked above)

N/A

Cultural Affiliation

N/A

Architect/Builder

Keith R. Maguire, Jr., Architect, NPS

David E. Thomson, Sr., Landscape Architect, NPS

Harry Buckley, Project Superintendent

9. Major Bibliographic References

Bibliography

(Cite the books, articles, and other sources used in preparing this form on one or more continuation sheets.)

Previous documentation on file (NPS):

- [] preliminary determination of individual listing (36 CFR 67) has been requested
[] previously listed in the National Register
[] previously determined eligible by the National Register
[] designated a National Historic Landmark
[] recorded by Historic American Buildings Survey #
[] recorded by Historic American Engineering Record #

Primary location of additional data:

- [X] State Historic Preservation Office
[X] Other State agency
[X] Federal agency
[] Local government
[] University
[] Other

Name of repository:

Oregon Parks & Recreation Department, Salem, OR

National Park Service Archives, San Bruno, CA

**United States Department of the Interior
National Park Service**

National Register of Historic Places Continuation Sheet

Section number **8** Page **1**

Silver Creek Youth Camp, Marion County, Oregon

Introduction

Silver Creek Youth Camp is a collection of buildings, objects and structures arranged within a wooded landscape that collectively forms a designed historic landscape that is significant in the history of Oregon State Parks. Having statewide significance under National Register Criterion A, Silver Creek Youth Camp is closely linked to efforts by the Federal Emergency Relief Administration and the Resettlement Administration in conjunction with the National Park Service to develop and manage recreational resources in state parks through the establishment of Recreational Demonstration Areas (RDA) by the Roosevelt Administration during the 1930s.

Under National Register Criterion C, the Camp is significant at the state level as a National Park Service-designed historic landscape. Extant landforms, major features such as roads and trails, arrangement of buildings and other features, and use of native materials and rustic design all contribute to the rustic character of the district. "Components of the designed landscape survive in ample proportion to demonstrate the direction of park planning and construction of the Rustic design developed during the late 1920s and 1930s which endeavored to tie Rustic style buildings to their environment." (Gilbert 1992, 9) Principal elements of the designed landscape at Silver Creek include: structures sited into the wooded valley with minor disturbance to the surrounding natural topography; the use of native materials and log construction techniques to visually integrate the structures with the surrounding landscape; and the practical and aesthetic use of native plant materials. Careful planning of the locations of roads, building clusters, and other man-made features within the natural topography bring key components of the Rustic Style together and naturalistic design into a cohesive landscape composition (Gilbert 1990).

The significance of the Camp is further enhanced by the fact that it is the only remaining intact portion of a larger plan for organized group camping developed by the federal government in Oregon's sole Recreational Demonstration Area project, and one of only two developed west of the Mississippi River.

Silver Creek Youth Camp meets all seven of the recognized aspects of historic integrity: location, design, setting, materials, workmanship, feeling, and association. These aspects of integrity are applied to the characteristics of the historic landscape that include its natural systems and features, spatial organization, cluster arrangement of buildings, circulation patterns, topography, vegetation, buildings and structures, views, and constructed water features (Page 1998, 53).

Early State Park Development

The story of Silver Creek Youth Camp begins during the Depression years, with the development of numerous assistance programs implemented by the Roosevelt Administration. These programs were designed to put people back to work following the Stock Market Crash of 1929, in many cases on public works projects. Many of Oregon's State Parks had the advantage of their early development under these programs, which included the Civilian Conservation Corps (CCC) and the Works Progress Administration (WPA).

The Silver Creek Youth Camp, being originally located outside the historical boundaries of Silver Falls State Park, nonetheless has a history that is closely tied with that of the Park. The development of Silver Falls State Park began in 1931 with the purchase of one hundred acres that included the 184-foot

**United States Department of the Interior
National Park Service**

**National Register of Historic Places
Continuation Sheet**

Section number **8** Page **2**

Silver Creek Youth Camp, Marion County, Oregon

South Falls, from D.E. Geiser. Charles Graves was the first caretaker, housed in a small cabin near South Falls. The state acquired the land making up Silver Falls State Park over several years from various owners, and the park eventually grew to its current size of 8,706 acres. 6,053 acres of this land was originally part of the adjacent federal Silver Creek Recreational Demonstration Area (RDA), immediately to the northeast of the original state park holdings.

Little development occurred in Silver Falls State Park in the mid-1930s, due to limited funds. In 1933, the "Emergency Conservation Work Act" (ECW) provided for the creation of the CCC, and authorized President Roosevelt to use CCC crews on state and municipal lands for the purpose of encouraging and assisting the development of state and county park systems. CCC enrollees were recruited by the Department of Labor, transported to their work sites by the War Department, and put to work by the Departments of Agriculture and Interior (Tweed 1977, 75).

"The Civilian Conservation Corps (CCC), under the technical supervision of the National Park Service (NPS), carried on State Park Emergency Conservation Work, [often with the assistance of other federal agencies]. In Oregon the first two camps were established in October, 1933, near Gold Beach in Curry County and at Benson Park east of Portland on the Columbia River." (Merriam 1992, 28) In late 1934, ECW crews began building trails and cleaning the park area at Silver Falls.

At the request of the Oregon State Highway Commission (which oversaw the Parks program in its early years), a CCC camp was established at Silver Falls in April of 1935 and run by the U.S. Army with assistance from the National Park Service through 1941. According to Sam Boardman, then State Parks Engineer, "... the CCC boys actually constructed the development foundation of our park system, having made various types of development in 50 state parks." (Boardman 1951, 5) In its early phase the CCC was not a constructor of rustic buildings, since the skills needed were thought to be "...too complex for efficient execution by young and generally unskilled enrollees..." and could not cost more than \$1,500.00. (Tweed 1977, 76) They accomplished much work in trail and road building, however, and soon small building and structure projects were initiated throughout Oregon's growing state park system. Today Silver Falls State Park is the largest in the Oregon State Parks system, encompassing 8,706 acres.

Silver Creek Recreational Demonstration Area

As a way of affecting better land use and assisting in the development of state parks and recreational areas, the Recreational Demonstration Area (RDA) program was set up in 1934 under the Federal Surplus Relief Administration (which later in 1934 was transferred to the Federal Emergency Relief Administration).¹ Of the \$25 million Congress allocated for the purchase of submarginal lands, \$5 million was to be used for the acquisition of lands to be converted to recreational use (McClelland 1998, 414).

The lands purchased for recreational demonstration area purposes, for the most part, were lands which had, from the standpoint of the conservation of their natural resources, been badly used. It was believed that, by the elimination of agriculture and destructive grazing, by control of erosion and fire, intelligent planting, and sound planning, those areas could be

¹ The Federal Surplus Relief Administration received the \$25 million, and later in 1934 the funds were transferred to the Federal Emergency Relief Administration. In May of 1935, the program was transferred to the newly established Resettlement Administration, and finally in 1936 the responsibility for the RDA program was handed over to the National Park Service. (McClelland 1998, 414)

**United States Department of the Interior
National Park Service**

**National Register of Historic Places
Continuation Sheet**

Section number **8** Page **3**

Silver Creek Youth Camp, Marion County, Oregon

largely restored and that they could contribute greatly to the meeting of needs for outdoor recreation. ...The designation of 'Recreational Demonstration Area' which was given to this type of area was intended to be temporary since it was planned, from the time acquisition was undertaken, that each should ultimately be transferred to some other agency for permanent administration or be given a different permanent status under the National Park Service. (USDI, "Administrative Manual..." 1944, 2)

Of national magnitude, Congress passed millions of dollars to be expended on various RDA projects, including \$3 million dedicated to the northwest states (Boardman 1951, 8). Four types of RDAs were identified in the program, with Silver Creek falling into the category of "...areas adjoining state scenic areas which could be redeveloped for recreational use." (McClelland 1998, 415) The Director of the northwest region was Professor Willard of Washington State College, who visited the Silver Falls area in the early 1930s, viewed the falls, and promptly recommended the RDA project to his superiors (Boardman 1951, 8). "It was one time the Parks Division took time by the forelock by inviting Professor Willard to visit Silver Falls Park. This project and one in California were the only ones selected on the Pacific Coast." (Boardman 1951, 8) The Silver Creek area met the requirements of the RDA program in that it was located adjacent to an established state park; had outstanding scenic values in the nearby waterfalls; consisted of submarginal farmland or severely logged-over acreage; and held much potential for redevelopment as a recreation area. The Silver Creek RDA was among the earliest to be recommended under the new program, being officially established in 1934 under the Federal Emergency Relief Administration (Merriam 1992, 29). The unit was located to the northeast, immediately adjacent to Silver Falls State Park.

A major part of the demonstration purpose of the project was to provide group camping facilities for low income groups and to lead the way for public and semi-public camping agencies in establishing facilities for their young people. It was further intended to demonstrate what the [National Park] Service believed to be proper camp lay-out and construction of facilities to promote a full recreation program by the camping agencies with the utmost consideration for health, safety, cultural and spiritual development of the camper. (Buckley 1946, 3)

After determining that organized family camping facilities were adequate in western Oregon, the Advisory Committee for the Silver Creek Recreational Demonstration Area decided that the development of organized youth camps would be the best expenditure of public funds for recreational development in the area. (Buckley 1946, 6)² Studies completed by the Advisory Committee showed not only a trend toward more organized group camping in Oregon, but that existing youth camping facilities were being overtaxed by the growing population, particularly in the Willamette Valley outside of the Portland area (Buckley 1940, 10).

Design of Silver Creek Youth Camp and the National Park Service Rustic Style

Preliminary planning phases began as early as 1935, with actual development of drawings being conducted by NPS design staff. Harry H. Buckley was the Project Superintendent, responsible for the

² Members of the Silver Creek RDA Advisory Committee included Dr. E.L. Packard, Dean, School of Science, Oregon State College, Corvallis; M. H.C. Seymour, Director Oregon 4H Clubs, Corvallis; Karl Onthank, Dean of Men, University of Oregon, Eugene; Dr. Bruce Baxter, President, Willamette University, Salem; M. C.P. Keyser, Superintendent of Parks, Portland; Mr. Jamieson Parker, Secretary, State Planning Board, Portland; and Mr. H.C. Richter, YMCA, Portland (Gage, 1937).

United States Department of the Interior
National Park Service

National Register of Historic Places Continuation Sheet

Section number 8 Page 4

Silver Creek Youth Camp, Marion County, Oregon

general work plan, advising and assisting regional technicians, and overseeing the development of the camp (Langille 1937). The primary responsibility for the building design and construction supervision fell to Architect and project Senior Foreman Keith R. Maguire (Langille 1937). The landscape and layout design was prepared by Landscape Architect David E. Thompson (Langille 1937).

Architects Maguire and Thompson designed the camp in a layout that incorporated the design sensibilities being promoted by the agency during the 1920s and 1930s, known as the National Park Service Rustic style. In America, antecedents of the Rustic style can be traced to the writings of 19th century Landscape Architect Andrew Jackson Downing, landscape architects and horticulturists, particularly Frederick Law Olmsted, Henry H. Hubbard, and Frank Waugh, who set down principles for designing in the naturalistic style (Gilbert 1990). Early sources for the architectural manifestations of the Rustic style included the Shingle style, promoted by Henry Hobson Richardson and others during the latter part of the 19th century. "Many features of the Shingle style were incorporated in park buildings beginning in the 1880s and formed the vocabulary for structures in state and national parks in the 1920s and 1930s. By the turn of the century, architects in the Adirondacks, the Midwest, and the West had already incorporated many characteristics of the style in their work." (McClelland 1993, 51-52) Other influences on the Rustic style were Frank Lloyd Wright's Prairie style, the work of California architects Greene and Greene, Bay Area architect Bernard Maybeck, and Gustav Stickley's ideals which were displayed in his periodical *The Craftsman* (McClelland 1993, 58-64).

As early as 1918, two years after the National Park Service was established, an "official" design ethic for the parks came from then Secretary of the Interior Franklin K. Lane:

In the construction of roads, trails, buildings, and other improvements, particular attention must be devoted always to the harmonizing of these improvements with the landscape. This is a most important item in our programs of development and requires the employment of trained engineers who either possess a knowledge of landscape architecture or have a proper appreciation of the esthetic value of park lands. (Gilbert 1990)

The purpose of formally implementing such a landscape design philosophy was to preserve the beauty of the natural environment while carefully introducing man-made structures which would make the natural areas more accessible to the public.

Not only was it [the Rustic style] designed to harmonize visually with its immediate environment, but it was also intended to harmonize in a cultural sense... The goal was to build a structure that reinforced the historical patterns of the ... region. This theme of regional cultural content as a part of non-intrusive architecture would grow to include not only log cabins, but also Indian pueblos, Spanish colonial adobes, and New England colonial frame structures. (Tweed 1977, 35)

Buildings that were designed to be subordinate to their natural surroundings and to the larger park plan were typical of the Rustic style. Through the use of native materials, a scale appropriate to the setting, and avoidance of rigid straight lines and over-sophistication, the style gave the impression of having been executed by pioneer craftsman with limited hand tools (Tweed 1977, 93).

**United States Department of the Interior
National Park Service**

**National Register of Historic Places
Continuation Sheet**

Section number **8** Page **5**

Silver Creek Youth Camp, Marion County, Oregon

At its heart, the Rustic style harmonized functional architecture and other man-made features with natural environments in a visually pleasing and non-intrusive manner. Shaped in the Park Service's first years of existence, the design philosophy of National Park Service (NPS) Rustic was carried out faithfully in the nation's parks until the early 1940s. (Lauter 1995)

The ideals of NPS park design during this time were synthesized in a 1935 work entitled *Park Structures and Facilities* by Albert Good, an Ohio architect working in the State Park Division of NPS (Tweed 1977, 92). This publication was so widely used as the foundation for national and state park design that requests for copies soon outran supply, and it became clear that a second issue was needed (Good I-III 1938, IX). In 1938, NPS published the revised three volume version, also by Good, with the new title *Park and Recreation Structures*. The work became an "indispensable architectural pattern book," providing fundamental guidance for those charged with design projects in the nation's state and national park systems (Gilbert 1990).

Construction of Silver Creek Youth Camp

Construction of the camp began in earnest under the Resettlement Administration in 1936. That same year, the National Park Service assumed jurisdiction of the property and the project under Executive Order 7496, which stipulated the transfer of all RDAs from the Resettlement Administration to the Department of the Interior (EO 7496, 1936). Utilizing 95% Works Progress Administration labor, work began on developing Oregon's only RDA group camping facilities. Unlike the CCC program which brought workers from various parts of the country, the WPA utilized local labor, and the workers were transported back and forth from their homes in Salem, Sublimity and Silverton (Boardman 1954, 217). The WPA was another of Roosevelt's New Deal programs designed to put both white- and blue-collar workers back to work on public projects sponsored by federal, state or local agencies. Launched by Executive Order in May of 1935, this massive employment relief program was responsible for the construction of airports, bridges, recreational facilities and other public structures, as well as for the sponsorship of art, history and social projects.

Since Rustic style design called for the use of native materials, a portable mill was requested and approved for use for on-site milling of local lumber. The mill was specifically used for "...cutting slots in the logs to hold the cabin wall shakes, splitting logs for the dining hall, quartering logs for the cabins...and for splitting the fifteen inch logs for seats for the fire circles." (Unknown author to Regional Director, 1937)

Silver Creek Camp was organized for use by children's groups, and was designed with a capacity of 96 campers and necessary staff. As was recommended by NPS, the camp included a

...dining hall, recreation building, crafts and nature building, camp administration building, infirmary, and central wash house, and staff and help quarters in the central area. Four units, or cabin colonies were built for sleeping quarters and consisted of six campers cabins, two leaders cabins, a unit lodge and a unit washroom. The total camp consists of 49 buildings. A recreation pond was created by excavating a basin in Silver Creek and constructing a masonry dam with removable boards to allow for the free flow of the stream and the passage of fish. (Buckley 1946, 7)

**United States Department of the Interior
National Park Service**

National Register of Historic Places Continuation Sheet

Section number **8** Page **6**

Silver Creek Youth Camp, Marion County, Oregon

Both the camp layout and the building and structure designs utilized at Silver Creek Youth Camp closely follow the recommendations laid out in Goods compilation work. The layout in particular is a nearly textbook example of NPS ideals of the time.

A central area provides facilities for general administration; dining; medical examination, care, and isolation; and for the mass recreational and cultural activities of all the campers on the area. Outlying a short walking distance from this central area are the units, each of which is a colony of sleeping cabins or tents for campers and their leaders, centering around a unit lodge which is the recreational and social rallying point of the group. A unit washhouse and latrine completes the unit lay-out. (Good III 1938, 109)

More specific direction on the arrangement of buildings included distances between camp units (on average this was 600 feet, but was determined based on providing "adequate privacy"); distances between cabins within the units (50 foot recommended maximum); distance of the cabins from the latrine (150 to 200 foot maximum); the location of the administrative center so as to be easily reached by automobile; and the distance between the campsite and the water activity area (the purpose being to make "...unsupervised swimming unthinkable to everyone in camp"). (Good III 1938, 110-113)

Typical building plans suitable for use in many different parks were issued by the Branch of Recreational Planning and State Cooperation of the National Park Service, to be used as guides by the designers to aid in visualizing "...the basic essentials for the various camp structures." (Demaray 1937, 1) Elements of design that were outlined in NPS guidance included the types of buildings necessary in the camp; the spatial arrangements of buildings in terms of their location within the camp and their distances from each other; basic sizes and shapes of buildings; maximum number of occupants recommended per building type; and the interior furnishings or appurtenances that were necessary in each building type.

While the functionality of the buildings and features in the Camp were important, the appearance and overall impact of the new development on the landscape was equally important.

Good also added that individual park structures were to always be subordinate to their natural settings and to the larger park plan (Tweed 1977, 93).

The style began to meet its decline in the mid- to late 1940s for several reasons. It "...required large amounts of labor, not only the form of skilled and unskilled workmen, but also in the form of highly trained professionals. Effective use of masonry and logs required frequent inspection during construction to gain good results. Moreover, once a rustic structure was completed, its maintenance was often a problem. Custom hardware, pole rafters, hand-split shakes, and log trim were hard to replace when damaged. Such problems were often beyond the capabilities of small park maintenance staffs." (Tweed 1977, 96-97) Architectural sensibilities of the day called for more modest, functional designs of greater efficiency, both in construction and cost, and "...simplicity of design and efficiency became not only the philosophy of the outside architectural world, but also a NPS budgetary requirement." (Tweed 1977, 104)

These elements are clearly represented, albeit on a smaller scale than larger National Park buildings, at Silver Creek. Log framing, wood shingle siding, stonework, and discrete placement of buildings within the landscape all epitomize the Rustic style in a park setting.

**United States Department of the Interior
National Park Service**

**National Register of Historic Places
Continuation Sheet**

Section number **8** Page **7**

Silver Creek Youth Camp, Marion County, Oregon

Occupation and Use of Silver Creek Youth Camp

By 1938, construction of all administrative buildings (except the 1947 Cook's Cabin) and three of the cabin groups was complete. The Hemlock cabin group, south of Trickle Falls, was the last to be constructed, and was completed in 1939. First occupation of the Camp occurred in June 1938 by the Salem YMCA, who has held the permit for use of Silver Creek Camp ever since (Kittredge November 17, 1938; Kittredge November 23, 1938; Buckley 1946, 10).

The Salem YMCA was established in 1892 with the purpose of promoting "... the physical, mental, social, and spiritual growth of persons, to emphasize reverence for God, development of leadership, responsibility for the common good, respect for personality and the application of the Golden Rule in human relationships." (Salem YMCA 1992, inside cover) Through youth activities, service clubs, sports and fitness, camping and other programs, the YMCA continues to take pride in its contributions to community. The first YMCA camp took place in 1922 with 28 boys, and by the 1990s hosted over 2,000 campers. The YMCA has operated at Camp Silver Creek under seasonal permit since 1938, and has been instrumental in the ongoing use, maintenance and improvement of the facility since that time.

YMCA Camp Silver Creek Directors have included Gus Moore (1938-1939), Fred Smith (1940-1941), Carl Greider (1942), Harold Davis (1942-1946), John Gardner (1947-1949) and many others following in their footsteps. Activities at the camp included fishing, hiking, craft work. The following activities were also part of the Silver Creek camping experience:

... swimming in the large crystal clear pool; gathering around the great fire in the evening where there is always singing, always stunts, songs, recitations, plays, winding up at bedtime with a solemn moment; sports galore, including archery, badminton, baseball, softball, soccer, football, volleyball, tether ball, deck tennis, horseshoes, croquet, track meets, life saving, swimming meets, etc.; stunt nights; treasure hunts, devotional periods; and many other things that go into a full camping program. (Salem YMCA, nd)

While two of the proposed camps at the Silver Creek RDA were not realized (Howard Creek and Lower Silver Creek camps) due to the entrance of the United States into World War II, construction of the facilities at Smith Creek and Silver Creek camps had been largely completed by 1942.

The basic development of the area has now been largely completed, and with the elimination of funds for this purpose the activities of Area Managers are directed toward the normal processes of administration. It is not expected that further funds will be received for development, at least until after the war emergency. For the present it will be largely a matter of maintaining present facilities and making them available for use of the public. (Maier, 1942)

As part of the RDA agreement to turn RDA lands and improvements over to state park agencies, the National Park Service transferred this acreage and all improvements to the State of Oregon in 1947.

United States Department of the Interior
National Park Service

National Register of Historic Places
Continuation Sheet

Section number **8** Page **8**

Silver Creek Youth Camp, Marion County, Oregon

Summary

The Silver Creek Youth Camp has statewide significance under National Register criterion A for its association with President Roosevelt's New Deal-era programs that were instrumental in the development and improvements to state and national park systems. The camp has been in continuous use as a summer recreation facility by the Salem YMCA since its opening in 1938.

The Camp is also significant under National Register criterion C as a National Park Service-designed historic landscape that retains integrity of location, setting, design, layout, workmanship and materials.

The significance of the Camp is further enhanced by the fact that it is the only remaining intact portion of a larger plan for organized group camping developed by the federal government in Oregon's sole Recreational Demonstration Area project, and one of only two developed west of the Mississippi River.

United States Department of the Interior
National Park Service

National Register of Historic Places Continuation Sheet

Section number 8 Page 9

Silver Creek Youth Camp, Marion County, Oregon

TIMELINE

- 1921 Oregon State Highway Commission created.
Governor Ben Olcott promoted first legislation authorizing the State Highway Commission to acquire right-of-way for scenic conservation and roadside tree-planting purposes.
- 1922 First lands donated to the State Highway Commission for park purposes were received. These parcels made up Sarah Helmick State Park.
- 1925 The Highway Commission was authorized by the State Legislature to acquire right-of-way specifically for park purposes. The Highway Commission now could acquire land in close proximity to state highways for waysides and natural features of interest.
- 1929 State Park Commission established.
Samuel H. Boardman was designated "state parks engineer."
- 1933 The first significant development of facilities in Oregon State Parks commenced as emergency work relief under the "New Deal." Improvements in as many as 45 parks were carried out by the CCC under the supervision of the regional office of the National Park Service in San Francisco.
- 1934 Silver Creek Recreation Demonstration Area established under the Federal Emergency Relief Administration.
The Federal Emergency Relief Administration land program transferred to the newly formed Resettlement Administration.
- 1935 NPS begins preliminary planning for Silver Creek RDA camps.
- 1936 Responsibility for the RDA program transferred to the National Park Service from the Resettlement Administration.
Silver Creek RDA turned over to Department of the Interior from Resettlement Administration by Presidential Executive Order.
Construction at Silver Creek RDA begins.
- 1938 NPS publishes *Park and Recreation Structures*, the handbooks for construction of facilities in state and National parks.
Salem YMCA received first short-term occupancy permit for use of Silver Creek Youth Camp.
- 1947 The Oregon State Parks Division was established within the Oregon State Highway Department.
NPS turns over Silver Creek RDA to State of Oregon.

**United States Department of the Interior
National Park Service**

**National Register of Historic Places
Continuation Sheet**

Section number **8** Page **10**

Silver Creek Youth Camp, Marion County, Oregon

Recreational Demonstration Areas

<u>State</u>	<u>Name of RDA</u>	<u>Location</u>
Alabama	Oak Mountain	Birmingham
California	Mendocino	Mendocino
Georgia	Alex H. Stephens	Crawfordville
	Hard Labor Creek	Rutledge
	Pine Mountain	Pine Mountain
Illinois	Pere Marquette	Grafton
Indiana	Versailles	Versailles
	Winemac	Winemac
Kentucky	Otter Creek	West Point
Maine	Camden Hills	Camden
Maryland	Catoctin (Camp David)	Thurmond
Michigan	Waterloo	Chelsea
Minnesota	St. Croix	Hinckley
Missouri	Cuivre River	Troy
	Lake of the Ozarks	Kaiser
	Montserrat	Knobnoster
Oklahoma	Lake Murray	Ardmore
Oregon	Silver Creek	Sublimity
Pennsylvania	Blue Knob	Bedford
	French Creek	Birdsboro
	Hickory Run	Hickory Run
	Laurel Hill	Rockwood
	Raccoon Creek	Beaver
Rhode Island	Beach Pond	West Greenwich
South Carolina	Kings Mountain	York
	Charaw	Cheraw
Tennessee	Fall Creek Falls	Pikeville
	Montgomery Bell	Burns
	Shelby Forest	Millington
Virginia	Chopawamsic	Quantico
	Swift Creek	Chester

**United States Department of the Interior
National Park Service**

**National Register of Historic Places
Continuation Sheet**

Section number **9** Page **1**

Silver Creek Youth Camp, Marion County, Oregon

BIBLIOGRAPHY

- Administrative Manual for the Recreational Demonstration Areas administered by the National Park Service, U.S. Department of the Interior, 1944.
- Boardman, Samuel H. "Oregon State Park System: A Brief History," Oregon Historical Quarterly (September 1954), 210-217.
- Samuel H. Boardman to Mr. C. H. Armstrong, November 1951. Located in Oregon Parks and Recreation Department Archive Files "Silver Falls State Park," Salem, Oregon.
- Buckley, Harry B. "Camping Report: Silver Creek R.D.A.: Narrative Report of Development and Operation of Group Camping at Silver Creek Recreational Demonstration Area 1936-1946, Marion County, Oregon." September 1946.
- Harry B. Buckley, Sublimity Oregon to National Park Service Region IV Regional Director, San Francisco, California, August 8, 1947. Copy of letter in Oregon Parks and Recreation Department Archive Files "Silver Falls State Park/Silver Falls: Correspondence 1936-1947," Salem, Oregon.
- Harry B. Buckley, Sublimity Oregon to National Park Service Region IV Regional Director, San Francisco, California, January 27, 1938. Copy of letter in Oregon Parks and Recreation Department Archive Files "Silver Falls State Park/Silver Falls: Correspondence 1936-1947," Salem, Oregon.
- Buckley, Harry B. "Native Forest Trees in the Silver Creek Recreational Demonstration Area: Introduction and Guide to Identification for Beginners." Compiled by Harry Buckley, Area Manager, National Park Service, May 1942. (Located in State Historic Preservation Office archive files)
- Buckley, Harry B. "Silver Creek Recreational Demonstration Area RDP Or-4, Marion County, Oregon: Master Plan Report." San Francisco, California: U.S. Department of the Interior, National Park Service, Branch of Recreation, Land Planning and State Cooperation, Region IV, April 1940.
- Carr, Ethan. *Wilderness by Design: Landscape Architecture and the National Park Service*. Lincoln and London: University of Nebraska Press, 1998.
- A.E. Demaray, Washington D.C. to Field Officers, Nationwide, November 17, 1937. Copy of memorandum in Oregon Parks and Recreation Department Archive Files "Silver Falls State Park/Camp Silver Creek Research," Salem, Oregon.
- Perry R. Gage Acting Regional Officer to Samuel H. Boardman, Salem Oregon, July 16, 1937. Copy of memorandum in Oregon Parks and Recreation Department Archive Files "Silver Falls State Park/Camp Silver Creek Research," Salem, Oregon.
- Good, Albert H. *Park and Recreation Structures Part I: Administration and Basic Service Facilities*. Washington D.C.: U.S. Department of the Interior, National Park Service, 1938.
- Good, Albert H. *Park and Recreation Structures Part II: Recreational and Cultural Facilities*. Washington D.C.: U.S. Department of the Interior, National Park Service, 1938.

United States Department of the Interior
National Park Service

National Register of Historic Places Continuation Sheet

Section number 9 Page 2

Silver Creek Youth Camp, Marion County, Oregon

-
- Good, Albert H. *Park and Recreation Structures Part II: Overnight and Organized Camp Facilities.* Washington D.C.: U.S. Department of the Interior, National Park Service, 1938.
- James, Ronnie and Ethan Carr. "Mendocino Woodlands Recreational Demonstration Area National Historic Landmarks Survey." Washington D.C.: U.S. Department of the Interior, National Park Service, 1997.
- Keller, J. Timothy and Genevieve P. Keller, Lane and Community Associates. "National Register Bulletin 18: How to Evaluate and Nominate Designed Historic Landscapes." Washington DC: National Park Service, National Register Branch, Interagency Resources Division, 1987.
- C.A. Kells, Salem Oregon to Harry Buckley, Sublimity Oregon, August 7, 1947. Copy in Oregon Parks and Recreation Department Archive Files "Silver Falls State Park," Salem, Oregon.
- Frank A. Kittredge, San Francisco California to Harry Buckley, Sublimity, Oregon, May 7, 1938. Copy in Oregon Parks and Recreation Department Archive Files "Silver Falls State Park," Salem, Oregon.
- Frank A. Kittredge, San Francisco to National Park Service Director, Washington D.C., November 18, 1938. Copy in Oregon Parks and Recreation Department Archive Files "Silver Falls State Park," Salem, Oregon.
- Frank A. Kittredge, San Francisco California to Karl W. Onthank, Eugene Oregon, November 23, 1938. Copy in Oregon Parks and Recreation Department Archive Files "Silver Falls State Park," Salem, Oregon.
- Gilbert, Cathy A. and Marsha Tolon. "Cultural Landscape Report: Cultural Landscape Inventory of Oregon Caves National Monument." Seattle Washington: National Park Service, Cultural Resources Division, Pacific Northwest Region, 1992. (<http://www.halcyon.com/rdpayne/ocnm-cli.html>)
- Gilbert, Cathy A. and Gretchen A. Luxenberg. "The Rustic Landscape of Rim Village, 1927-1941 Crater Lake National Park." Seattle Washington: National Park Service, Cultural Resources Division, Pacific Northwest Region, 1990. (<http://www.nps.gov/crla/rimvill.htm#lan>)
- Herbert Maier, San Francisco California to Jamieson Parker, Portland Oregon, December 5, 1942. Copy in Oregon Parks and Recreation Department Archive Files "Silver Falls State Park," Salem, Oregon.
- Langille, W.A. "Silver Falls: Oregon's Premier State Park." Oregon Parks and Recreation Department files, no date.
- Lauter, David. "Historic Context Statements: Craters of the Moon National Monument, Idaho." Washington D.C.: U.S. Department of the Interior, National Park Service, 1995. (<http://www.nps.gov/crmo/hcs.htm>)
- McClelland, Linda Flint. *Presenting Nature: The Historic Landscape Design of the National Park Service 1916-1942.* Washington D.C.: U.S. Department of the Interior, National Park Service, 1993.
- McClelland, Linda Flint. *Building the National Parks: Historic Landscape Design and Construction.* Baltimore and London: The Johns Hopkins University Press, 1998.

**United States Department of the Interior
National Park Service**

**National Register of Historic Places
Continuation Sheet**

Section number **9** Page **3**

Silver Creek Youth Camp, Marion County, Oregon

Merriam, Lawrence C. Jr. *Oregon's Highway Park System 1921-1989: An Administrative History.* Salem, Oregon: Oregon Parks and Recreation Department, 1992.

National Archives and Records Administration, Pacific Region, San Bruno, California.

Oregon Parks and Recreation Department files.

Oregon State Historic Preservation Office files.

Page, Robert R. and Cathy A. Gilbert and Susan A. Dolan. *A Guide to Cultural Landscape Reports: Contents, Process, and Techniques.* Washington D.C.: U.S. Department of the Interior, National Park Service Cultural Resource Stewardship and Partnerships, Park Historic Structures and Cultural Landscapes Program, 1998.

Peterson, Ernest W. "Silver Creek Recreational Area to Open Soon," *Oregon Journal.* Portland, Oregon: Sunday, June 26, 1938, Section 4.

Roosevelt, Franklin D., President. Executive Order 7496, November 14, 1936. Copy in Oregon Parks and Recreation Department Archive Files "Silver Falls State Park," Salem, Oregon.

Salem Family YMCA. "Into the Next Century: The Salem Family YMCA Centennial History." Salem, Oregon: Salem Family YMCA, October 1992. Copy in Oregon Parks and Recreation Department Archive Files "Silver Falls State Park," Salem, Oregon.

Salem YMCA. Untitled brochure, no date. Copy in Oregon Parks and Recreation Department Archive Files "Silver Falls State Park," Salem, Oregon.

Schoaps, Ed and Elisabeth Potter. "Silver Falls State park Concession Building Area (Silver Falls Lodge)," National Register of Historic Places Nomination Form." 1983. Oregon State Historic Preservation Office National Register files.

"Shangri-La," World Wide Web site address
<http://home.earthlink.net/~vpnelson/CDHistory/shangri.html>

Tweed, William C and Laura E. Soulliere and Henry G. Law. *National Park Service Rustic Architecture: 1916-1942.* San Francisco, California: National Park Service Regional Office, Division of Cultural Resource Management, February 1977.

Unknown author to Regional Director, San Francisco California, December 21, 1937. Copy of letter in Oregon Parks and Recreation Department Archive Files "Silver Falls State Park/Camp Silver Creek Research," Salem, Oregon.

Unrau, Harlan D. and G. Frank Williss. "Administrative History: Expansion of the National Park Service in the 1930s." September 1983. (Online Book http://www.cr.nps.gov/history/online_books/unrau-williss/adhi.htm)

U.S. Department of the Interior, National Park Service. "Administrative Manual for the Recreational Demonstration Areas administered by the National Park Service, U.S. Department of the Interior." Washington D.C.: U.S. Department of the Interior, 1944.

United States Department of the Interior
National Park Service

National Register of Historic Places

Continuation Sheet

Section number **9** Page **4**

Silver Creek Youth Camp, Marion County, Oregon

U.S. Department of the Interior, National Park Service, National Register Branch. "National Register Bulletin 16A: How to Complete the National Register Registration Form." Washington DC: National Park Service, National Register Branch, Interagency Resources Division, 1991.

U.S. Department of the Interior, National Park Service, National Register Branch. "National Register Bulletin 15: How to Apply the National Register Criteria for Evaluation." Washington DC: National Park Service, National Register Branch, Interagency Resources Division, 1990.

Silver Creek Youth Camp, Silver Falls State Park

Marion County, Oregon

Name of Property

County and State

10. Geographical Data

Acreage of Property Approximately 206 acres

UTM References

(Place additional UTM references on a continuation sheet)

1 | 11 | 01 | 15 | 13 | 11 | 16 | 17 | 10 | 14 | 91 | 61 | 71 | 61 | 00 |

3 | 11 | 01 | 15 | 13 | 10 | 11 | 17 | 10 | 14 | 91 | 61 | 11 | 12 | 10 |

2 | 11 | 01 | 15 | 13 | 11 | 16 | 18 | 15 | 14 | 91 | 61 | 61 | 11 | 10 |

4 | 11 | 01 | 15 | 13 | 10 | 11 | 15 | 10 | 14 | 91 | 61 | 71 | 61 | 21 | 01 |

[] See continuation sheet

Verbal Boundary Description

(Describe the boundaries of the property on a continuation sheet.)

Boundary Justification

(Explain why the boundaries were selected on a continuation sheet.)

11. Form Prepared by

name/title Elizabeth Carter, Historic Preservation Consulting, for

organization Oregon Parks and Recreation Department

street & number 1115 Commercial Street NE telephone 503-378-4168

city or town Salem state Oregon zip code 97301

Additional Documentation

Submit the following items with the completed form:

Continuation Sheets

Maps

A USGS map (7.5 or 15 minute series) indicating the property's location.

A Sketch map for historic districts and properties having large acreage or numerous resources.

Photographs

Representative black and white photographs of the property.

Additional Items

(Check with the SHPO or FPO for any additional items)

Property Owner

(Complete this item at the request of SHPO or FPO.)

name Oregon Parks and Recreation Department

street & number 1115 Commercial Street NE Suite 1 telephone 503-378-4168

city or town Salem state OR zip code 97301

Paperwork Reduction Act Statement: This information is being collected for applications to the National Register of Historic Places to nominate properties for listing or determine eligibility for listing, to list properties, and to amend existing listings. Response to this request is required to obtain a benefit in accordance with the National Historic Preservation Act, as amended (16 U.S.C. 470 et seq.).

Estimated Burden Statement: Public reporting burden for this form is estimated to average 18.1 hours per response including time for reviewing instructions, gathering and maintaining data, and completing and reviewing the form. Direct comments regarding this burden estimate or any aspect of this form to the Chief, Administrative Services Division, National Park Service, P.O. Box 37127, Washington D.C. 20013-7127; and the Office of Management and Budget, Paperwork Reductions Projects (1024-0018), Washington D.C. 20503.

**United States Department of the Interior
National Park Service**

National Register of Historic Places Continuation Sheet

Section number **10** Page **1**

Silver Creek Youth Camp, Marion County, Oregon

Boundary Description

The area of the Silver Creek Youth Camp proposed for nomination to the National Register is located in Sections 19 and 30 of Township 8 South, Range 2 East of the Willamette Meridian in Marion County, Oregon. The boundary of the nominated property is delineated by the polygon whose vertices are marked by the following UTM reference points: [insert UTM]

Boundary Justification

The northeastern and southwestern boundaries follow the 1800' ridgelines that line the South Silver Creek watershed in this area. These ridgelines form natural visual boundaries viewed from buildings in the eastern and western sides of the district. The northwestern and southeastern boundaries are parallel to each other, crossing the valley from points along the 1800' elevation ridges that run on either side of the district.

In defining the boundaries for this historic district, guidance from the National Park Service publication "A Guide to Cultural Landscape Reports" was used. According to this source, the following features are to be used to mark boundaries:

1. Legally recorded boundary lines.
2. Natural topographic features, such as ridges, valleys, rivers, and forests.
3. Constructed features such as stone walls; hedgerows; the curblines of highways, streets and roads; areas of new construction.
4. Topographic features, contour lines, and section lines are marked on USGS maps (for large properties).

Standards #2 and #4 were employed in determining the boundaries for the Silver Creek Youth Camp Historic District.

Further guidance from National Register Bulletin 16A stated that "Acreage, including fields, forests, and open range, that was associated with the property historically and conveys the property's historic setting" may be used to establish boundaries in rural historic district.

Since the natural setting and topography not only contribute significantly to the historic character of the district today, but were factors in the original design and layout of the Camp, the boundaries were drawn to include the land between the two 1800' ridgelines that cradle South Silver Creek. In this way, viewsheds as seen from all historic buildings in the district are preserved.

FIGURE 1: SILVER CREEK YOUTH CAMP

Historic District Boundaries

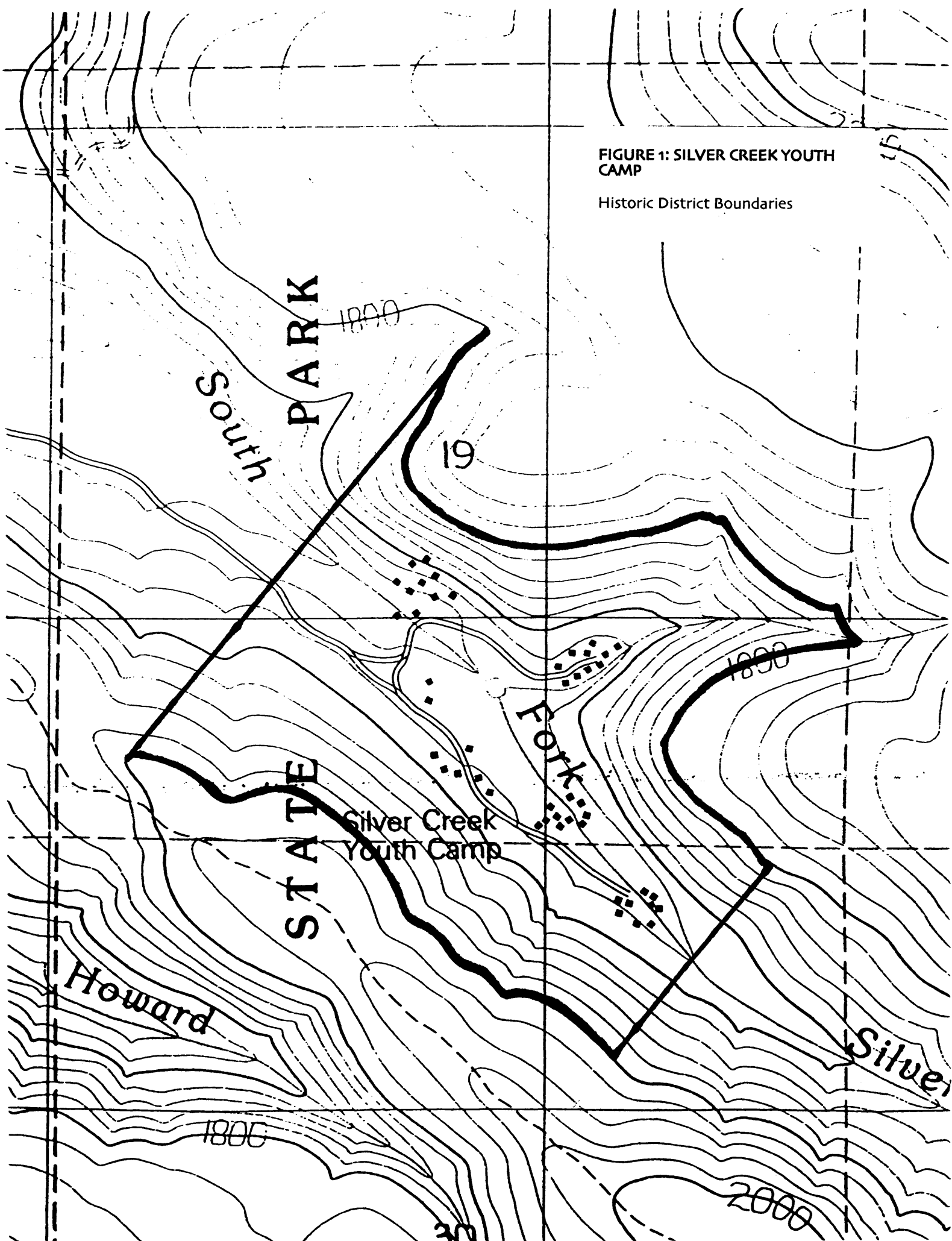


FIGURE 2: SILVER CREEK YOUTH CAMP

Site plan showing resource locations

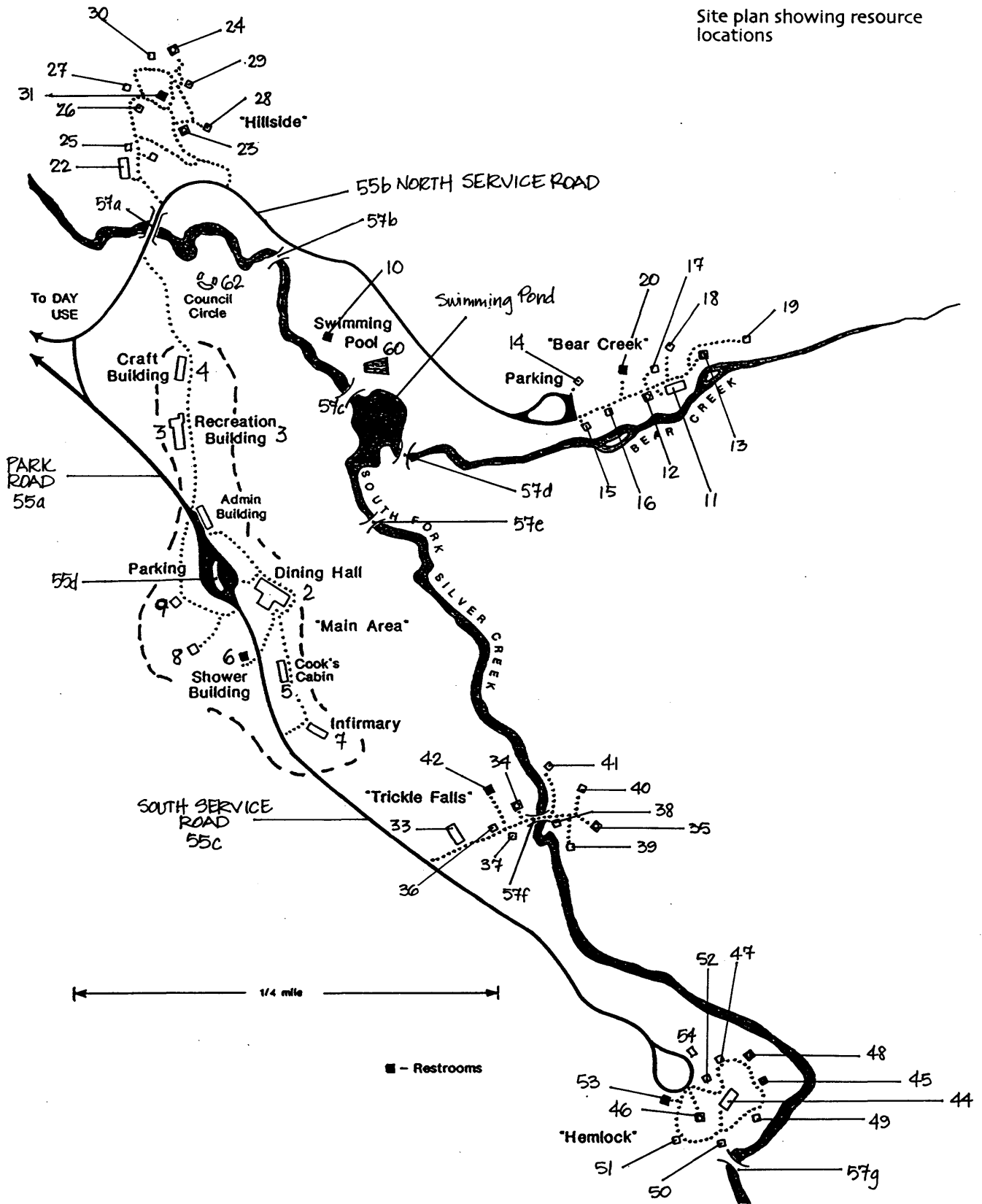
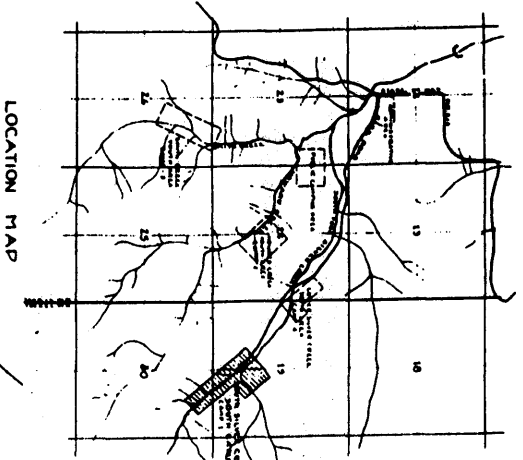
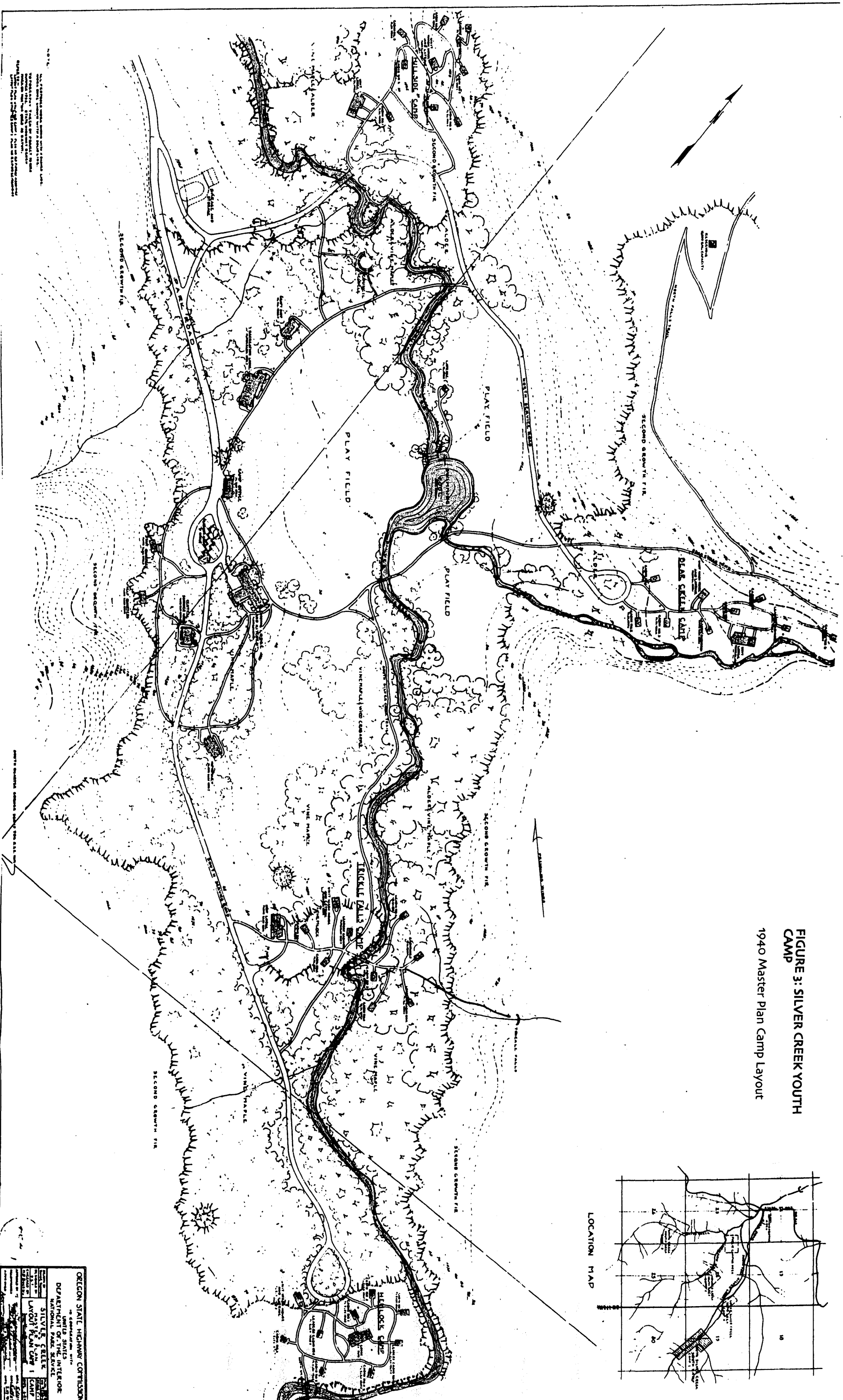


FIGURE 3: SILVER CREEK YOUTH CAMP
1940 Master Plan Camp Layout



LOCATION MAP

OREGON STATE HIGHWAY COTTISSON
 as designated site
 DEPARTMENT OF INTERIOR
 NATIONAL PARK SERVICE
 SILVER CREEK
 MASTER PLAN CAMP LAYOUT
 CAMP 1
 1940
 1:5000
 1940

NOTES:
 1. ALL DISTANCES ARE APPROXIMATE.
 2. ALL DISTANCES ARE APPROXIMATE.
 3. ALL DISTANCES ARE APPROXIMATE.
 4. ALL DISTANCES ARE APPROXIMATE.
 5. ALL DISTANCES ARE APPROXIMATE.
 6. ALL DISTANCES ARE APPROXIMATE.
 7. ALL DISTANCES ARE APPROXIMATE.
 8. ALL DISTANCES ARE APPROXIMATE.
 9. ALL DISTANCES ARE APPROXIMATE.
 10. ALL DISTANCES ARE APPROXIMATE.

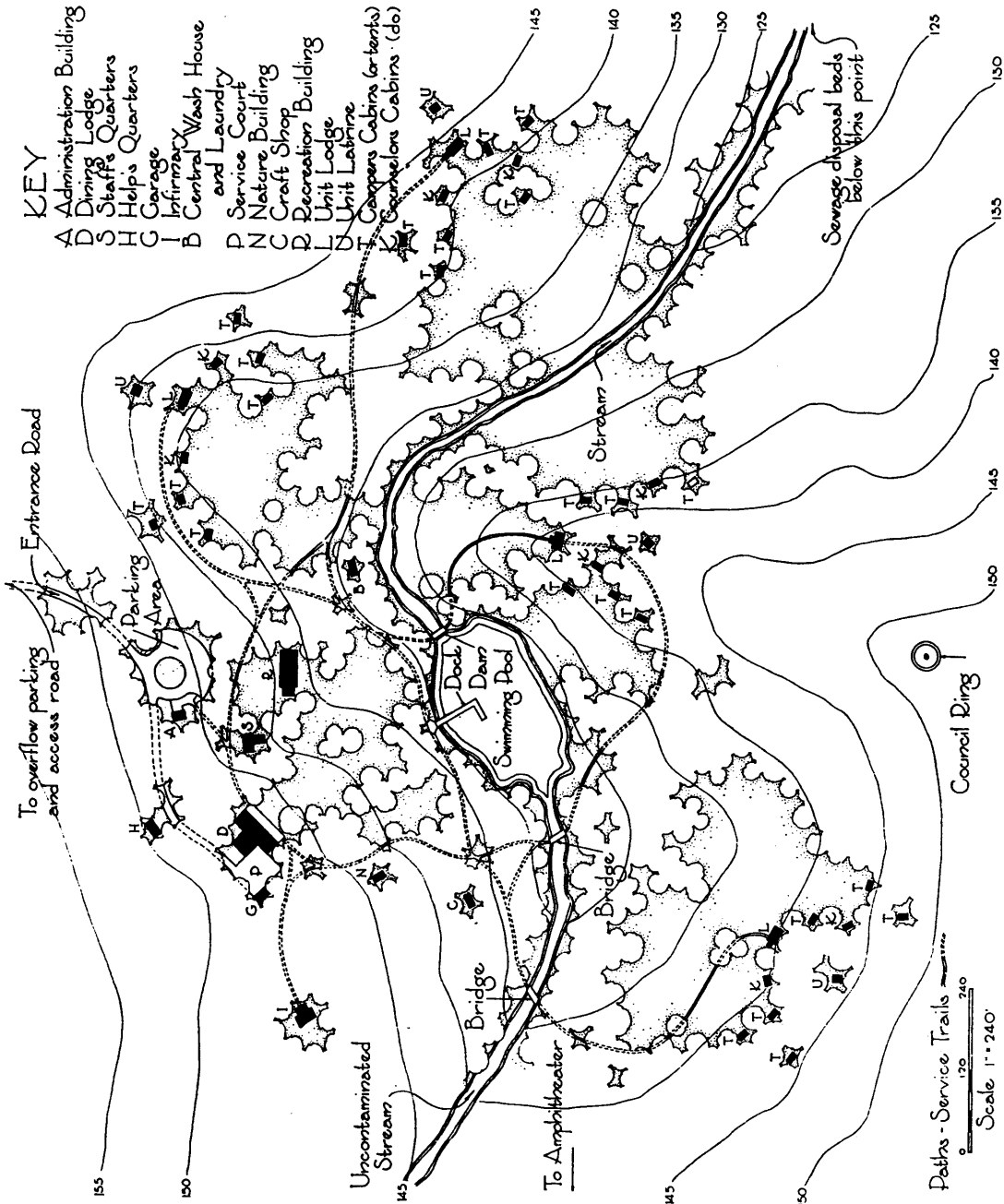


FIGURE 4: SILVER CREEK YOUTH CAMP

Example of "ideal" camp layout proposed by NPS in 1938.
 Source: Good III 1938, page 118.

CHART ILLUSTRATING THE FACTORS INVOLVED IN LOCATING, DEVELOPING, AND OPERATING AN ORGANIZED CAMP

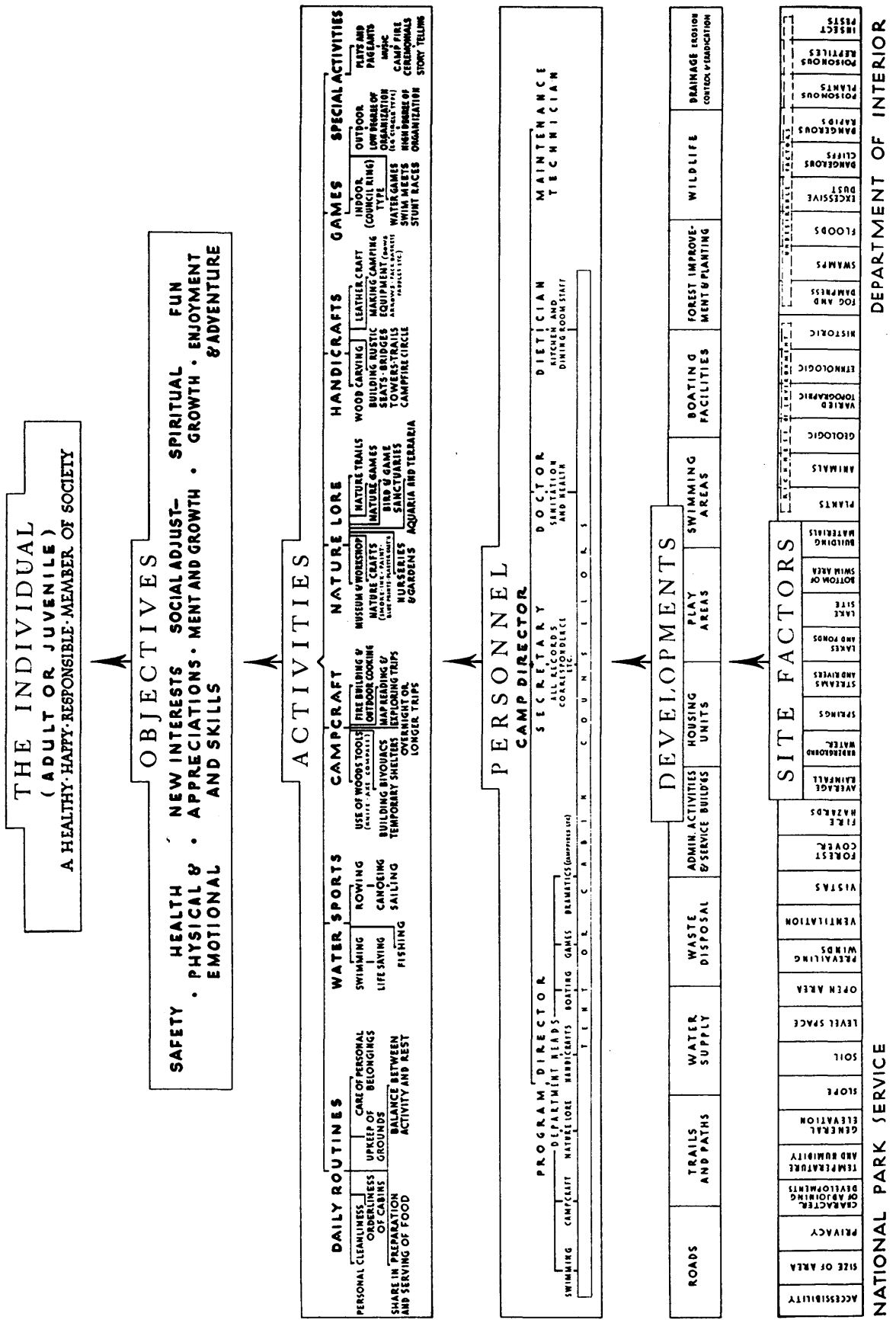


FIGURE 5: SILVER CREEK YOUTH CAMP

"Locating, Developing, and Operating an Organized Camp"
Source: Good III 1938, page 120

United States Department of the Interior
National Park Service

National Register of Historic Places
Continuation Sheet

Section number **Photographs** Page **1**

Silver Creek Youth Camp, Marion Co., Oregon

Historic Photographs

1. Silver Creek Youth Camp: "ENTRANCE SIGN – Sign scribed on each end of section of 6 ft. fir log, treated with linseed oil, letters painted yellow. Sign may be read 500 ft. away."
Sublimity vicinity, Marion County, Oregon.
Photographer Unknown.
Circa 1939.
Original held by Oregon Parks and Recreation Department, Archive files.
1 of 72
2. Silver Creek Youth Camp: "DIRECTIONAL SIGN: Lettering scribed on 3" x 13" fir plank and then charred. Sign placed at the diversion of roads to each area."
Sublimity vicinity, Marion County, Oregon.
Photographer Unknown.
Circa 1939.
Original held by Oregon Parks and Recreation Department, Archive files.
2 of 72
3. Silver Creek Youth Camp: "PARK ROAD: Picture showing natural reestablishment of vegetative cover on road slopes in two years time."
Sublimity vicinity, Marion County, Oregon.
Photographer Unknown.
Circa 1939.
Original held by Oregon Parks and Recreation Department, Archive files.
3 of 72
4. Silver Creek Youth Camp: "TYPICAL TRAIL SIGN: Trail and truck trail directional signs on 2" x 5" fir boards with braces. Lettering burned into boards about 1/2" deep with branding irons."
Sublimity vicinity, Marion County, Oregon.
Photographer Unknown.
Circa 1939.
Original held by Oregon Parks and Recreation Department, Archive files.
4 of 72
5. Silver Creek Youth Camp: "GENERAL VIEW OF ADMINISTRATIVE AREA – CAMP 1-C: View showing from left: Infirmary, Dining Lodge & Kitchen, Central Shower House, Help Quarters, Staff Quarters, Camp Office, Recreation Lodge & Craft Shop. Swimming Pool, Latrine by Pool, and playfields in foreground."
Sublimity vicinity, Marion County, Oregon.
Photographer Unknown.
Circa 1939.
Original held by Oregon Parks and Recreation Department, Archive files.
5 of 72

United States Department of the Interior
National Park Service

National Register of Historic Places
Continuation Sheet

Section number **Photographs** Page 2

Silver Creek Youth Camp, Marion Co., Oregon

-
6. Silver Creek Youth Camp: "CRAFTS SHOP – CAMP 1-C: Building is 22 ft. x 37 ft., one story pole and shake construction with stone fireplace and terrace."
Sublimity vicinity, Marion County, Oregon.
Photographer Unknown.
Circa 1939.
Original held by Oregon Parks and Recreation Department, Archive files.
6 of 72
 7. Silver Creek Youth Camp: "DINING LODGE AND KITCHEN – CAMP 1-C: T-shaped inclosed [sic] building. Dining Room is 81 ft. by 22 ft. Kitchen wing is 35 ft. by 25 ft. Pole and shake construction with stone fireplace and porches. Concrete floor in kitchen."
Sublimity vicinity, Marion County, Oregon.
Photographer Unknown.
Circa 1939.
Original held by Oregon Parks and Recreation Department, Archive files.
7 of 72
 8. Silver Creek Youth Camp: "INTERIOR VIEW OF DINING HALL – CAMP 1-C: Showing table placement and interior treatment. Dining Hall will seat 120 persons."
Sublimity vicinity, Marion County, Oregon.
Photographer Unknown.
Circa 1939.
Original held by Oregon Parks and Recreation Department, Archive files.
8 of 72
 9. Silver Creek Youth Camp: "SWIMMING POOL AND PLAYING FIELDS – CAMP 1-C: Showing campers using pool and playfields. Dining Lodge and Camp Offices in background."
Sublimity vicinity, Marion County, Oregon.
Photographer Unknown.
Circa 1939.
Original held by Oregon Parks and Recreation Department, Archive files.
9 of 72
 10. Silver Creek Youth Camp: "TYPICAL CAMPERS' CABIN – CAMP 1-C: Four Cot sleeping cabin. 12 ft. x 18 ft., pole and shake construction."
Sublimity vicinity, Marion County, Oregon.
Photographer Unknown.
Circa 1939.
Original held by Oregon Parks and Recreation Department, Archive files.
10 of 72
 11. Silver Creek Youth Camp: "TYPICAL UNIT LODGE – CAMP 1-C: View showing kitchen end of building. Building is 20 ft. by 50 ft. overall dimensions. Pole, stud and shake construction with stone fireplace, stove and terrace."
Sublimity vicinity, Marion County, Oregon.
Photographer Unknown.
Circa 1939.
Original held by Oregon Parks and Recreation Department, Archive files.
11 of 72

United States Department of the Interior
National Park Service

National Register of Historic Places
Continuation Sheet

Section number **Photographs** Page **3**

Silver Creek Youth Camp, Marion Co., Oregon

-
12. Silver Creek Youth Camp: "TYPICAL FOOT BRIDGE – CAMP 1-C: Log mud sills and stringers, puncheon deck and pole handrails. 46 ft. long, 4 ft. 9 inches between hand rails."
Sublimity vicinity, Marion County, Oregon.
Photographer Unknown.
Circa 1939.
Original held by Oregon Parks and Recreation Department, Archive files.
12 of 72
 13. Silver Creek Youth Camp: "STAFF QUARTERS – CAMP 1-C: Enclosed saddle bag type 26 ft. by 12 ft. overall dimensions. Pole and shake constructions with stone porch."
Sublimity vicinity, Marion County, Oregon.
Photographer Unknown.
Circa 1939.
Original held by Oregon Parks and Recreation Department, Archive files.
13 of 72
 14. Silver Creek Youth Camp: "INFIRMARY – CAMP 1-C: Inclosed [sic] frame construction with shakes and stone terrace. Overall dimensions 24 ft. by 40 ft."
Sublimity vicinity, Marion County, Oregon.
Photographer Unknown.
Circa 1939.
Original held by Oregon Parks and Recreation Department, Archive files.
14 of 72
 15. Silver Creek Youth Camp: "TYPICAL LEADERS' CABIN – CAMP 1-C: Two cot sleeping cabin with small porch. Pole and shake construction 12. ft by 15 ft."
Sublimity vicinity, Marion County, Oregon.
Photographer Unknown.
Circa 1939.
Original held by Oregon Parks and Recreation Department, Archive files.
15 of 72
 16. Silver Creek Youth Camp: "TYPICAL UNIT WASH HOUSE AND LATRINE – CAMP 1-C: Pole and shake construction with concrete floor, three toilets with wash sink and laundry trays. 15 ft. by 20 ft. overall dimensions."
Sublimity vicinity, Marion County, Oregon.
Photographer Unknown.
Circa 1939.
Original held by Oregon Parks and Recreation Department, Archive files.
16 of 72
 17. Silver Creek Youth Camp: "GENERAL VIEW OF HEMLOCK CABIN GROUP – CAMP 1-C: View looking west showing grouping of Sleeping Cabins, Leaders' Cabin No. 2 on right. Unit Lodge in center and Cabin No. 4 on left. South Silver Creek Stream bed in foreground."
Sublimity vicinity, Marion County, Oregon.
Photographer Unknown.
Circa 1939.
Original held by Oregon Parks and Recreation Department, Archive files.
17 of 72

United States Department of the Interior
National Park Service

National Register of Historic Places
Continuation Sheet

Section number **Photographs** Page **4**

Silver Creek Youth Camp, Marion Co., Oregon

18. Silver Creek Youth Camp: "WATER RESERVOIR – CAMP 1-C: 12,000 gallon reinforced concrete water storage tank to serve Silver Creek Youth Camp."
Sublimity vicinity, Marion County, Oregon.
Photographer Unknown.
Circa 1939.
Original held by Oregon Parks and Recreation Department, Archive files.
18 of 72
19. Silver Creek Youth Camp: "COUNCIL CIRCLE – CAMP 1-C: Constructed of 18 inch Douglas Fir logs sawn in half and placed on sleepers. Seating capacity, 135 persons."
Sublimity vicinity, Marion County, Oregon.
Photographer Unknown.
Circa 1939.
Original held by Oregon Parks and Recreation Department, Archive files.
19 of 72
20. Silver Creek Youth Camp: "WINTER SCENE: Park Road to Camp 1-C during heavy snow of February, 1937. Such snows occur about once every three years on the project."
Sublimity vicinity, Marion County, Oregon.
Photographer Unknown.
1937.
Original held by Oregon Parks and Recreation Department, Archive files.
20 of 72

United States Department of the Interior
National Park Service

National Register of Historic Places
Continuation Sheet

Section number **Photographs** Page 5

Silver Creek Youth Camp, Marion Co., Oregon

Current Photographs

21. Silver Creek Youth Camp: Overview
Sublimity vicinity, Marion County, Oregon.
Photographer: Liz Carter
September 2000.
Negative held by Oregon Parks and Recreation Department, Salem, Oregon
View:
21 of 72
22. Silver Creek Youth Camp: Overview
Sublimity vicinity, Marion County, Oregon.
Photographer: Liz Carter
September 2000.
Negative held by Oregon Parks and Recreation Department, Salem, Oregon
View:
22 of 72
23. Silver Creek Youth Camp: Administration Building
Sublimity vicinity, Marion County, Oregon.
Photographer: Liz Carter
September 2000.
Negative held by Oregon Parks and Recreation Department, Salem, Oregon
View: Looking northeast at west and south elevations.
23 of 72
24. Silver Creek Youth Camp: Dining Hall & Kitchen Building
Sublimity vicinity, Marion County, Oregon.
Photographer: Liz Carter
September 2000.
Negative held by Oregon Parks and Recreation Department, Salem, Oregon
View: Looking northwest at south and east elevations of Dining Hall.
24 of 72
25. Silver Creek Youth Camp: Dining Hall and Kitchen Building
Sublimity vicinity, Marion County, Oregon.
Photographer: Liz Carter
December 2000.
Negative held by Oregon Parks and Recreation Department, Salem, Oregon
View: Looking southwest at north side elevation; note addition to kitchen wing
25 of 72
26. Silver Creek Youth Camp: Dining Hall Interior
Sublimity vicinity, Marion County, Oregon.
Photographer: Liz Carter
December 2000.
Negative held by Oregon Parks and Recreation Department, Salem, Oregon
View: Looking south.
26 of 72

United States Department of the Interior
National Park Service

National Register of Historic Places
Continuation Sheet

Section number **Photographs** Page **6**

Silver Creek Youth Camp, Marion Co., Oregon

27. Silver Creek Youth Camp: Dining Hall Interior
Sublimity vicinity, Marion County, Oregon.
Photographer: Liz Carter
December 2000.
Negative held by Oregon Parks and Recreation Department, Salem, Oregon
View: Looking north.
27 of 72
28. Silver Creek Youth Camp: Recreation Building
Sublimity vicinity, Marion County, Oregon.
Photographer: Liz Carter
September 2000.
Negative held by Oregon Parks and Recreation Department, Salem, Oregon
View: Looking northwest at southeast elevation.
28 of 72
29. Silver Creek Youth Camp: Crafts Building
Sublimity vicinity, Marion County, Oregon.
Photographer: Liz Carter
September 2000.
Negative held by Oregon Parks and Recreation Department, Salem, Oregon
View: Looking northwest at southeast elevation.
29 of 72
30. Silver Creek Youth Camp: Crafts Building interior
Sublimity vicinity, Marion County, Oregon.
Photographer: Liz Carter
December 2000.
Negative held by Oregon Parks and Recreation Department, Salem, Oregon
View: Looking south.
30 of 72
31. Silver Creek Youth Camp: Cook's Cabin
Sublimity vicinity, Marion County, Oregon.
Photographer: Liz Carter
September 2000.
Negative held by Oregon Parks and Recreation Department, Salem, Oregon
View: Looking northwest at southeast elevation.
31 of 72
32. Silver Creek Youth Camp: Central Wash House
Sublimity vicinity, Marion County, Oregon.
Photographer: Liz Carter
December 2000.
Negative held by Oregon Parks and Recreation Department, Salem, Oregon
View: Looking southwest at east and north elevations.
32 of 72

**United States Department of the Interior
National Park Service**

**National Register of Historic Places
Continuation Sheet**

Section number **Photographs** Page 7

Silver Creek Youth Camp, Marion Co., Oregon

33. Silver Creek Youth Camp: Infirmary Building
Sublimity vicinity, Marion County, Oregon.
Photographer: Liz Carter
September 2000.
Negative held by Oregon Parks and Recreation Department, Salem, Oregon
View: Looking south at east and north elevations.
33 of 72
34. Silver Creek Youth Camp: Staff Quarters
Sublimity vicinity, Marion County, Oregon.
Photographer: Liz Carter
September 2000.
Negative held by Oregon Parks and Recreation Department, Salem, Oregon
View: Looking northwest at south and east elevations.
34 of 72
35. Silver Creek Youth Camp: Help's Quarters
Sublimity vicinity, Marion County, Oregon.
Photographer: Liz Carter
September 2000.
Negative held by Oregon Parks and Recreation Department, Salem, Oregon
View: Looking northwest at southeast elevation.
35 of 72
36. Silver Creek Youth Camp: Swimming Pool Latrine
Sublimity vicinity, Marion County, Oregon.
Photographer: Liz Carter
October 2000.
Negative held by Oregon Parks and Recreation Department, Salem, Oregon
View: Looking northwest.
36 of 72
37. Silver Creek Youth Camp: Hillside Unit Lodge
Sublimity vicinity, Marion County, Oregon.
Photographer: Liz Carter
September 2000.
Negative held by Oregon Parks and Recreation Department, Salem, Oregon
View: Looking northwest at south and east elevations.
37 of 72
38. Silver Creek Youth Camp: Trickle Falls Unit Lodge
Sublimity vicinity, Marion County, Oregon.
Photographer: Liz Carter
September 2000.
Negative held by Oregon Parks and Recreation Department, Salem, Oregon
View: Looking northwest at south (rear) and east (side) elevations.
38 of 72

United States Department of the Interior
National Park Service

National Register of Historic Places
Continuation Sheet

Section number **Photographs** Page **8**

Silver Creek Youth Camp, Marion Co., Oregon

39. Silver Creek Youth Camp: Hillside Unit Lodge interior
Sublimity vicinity, Marion County, Oregon.
Photographer: Liz Carter
September 2000.
Negative held by Oregon Parks and Recreation Department, Salem, Oregon
View: Looking southwest.
39 of 72
40. Silver Creek Youth Camp: Trickle Falls Unit Lodge Kitchen, Fireplace detail
Sublimity vicinity, Marion County, Oregon.
Photographer: Liz Carter
September 2000.
Negative held by Oregon Parks and Recreation Department, Salem, Oregon
View: Looking southeast.
40 of 72
41. Silver Creek Youth Camp: Hemlock Unit Lodge
Sublimity vicinity, Marion County, Oregon.
Photographer: Liz Carter
September 2000.
Negative held by Oregon Parks and Recreation Department, Salem, Oregon
View: Looking south at northeast corner; note enclosed kitchen.
41 of 72
42. Silver Creek Youth Camp: Hemlock Leader Cabin #L-2
Sublimity vicinity, Marion County, Oregon.
Photographer: Liz Carter
September 2000.
Negative held by Oregon Parks and Recreation Department, Salem, Oregon
View: Looking south at north (front) elevation.
42 of 72
43. Silver Creek Youth Camp: Hemlock Camper Cabin #3
Sublimity vicinity, Marion County, Oregon.
Photographer: Liz Carter
September 2000.
Negative held by Oregon Parks and Recreation Department, Salem, Oregon
View: Looking north at west and south elevations.
43 of 72
44. Silver Creek Youth Camp: Trickle Falls Camper Cabin #1
Sublimity vicinity, Marion County, Oregon.
Photographer: Liz Carter
October 2000.
Negative held by Oregon Parks and Recreation Department, Salem, Oregon
View: Looking north at west and south elevations.
44 of 72

United States Department of the Interior
National Park Service

National Register of Historic Places
Continuation Sheet

Section number **Photographs** Page **9**

Silver Creek Youth Camp, Marion Co., Oregon

45. Silver Creek Youth Camp: Trickle Falls Camper Cabin #1 detail
Sublimity vicinity, Marion County, Oregon.
Photographer: Liz Carter
October 2000.
Negative held by Oregon Parks and Recreation Department, Salem, Oregon
View: Looking north at detail of south (front) elevation.
45 of 72
46. Silver Creek Youth Camp: Hillside Cabin, rear elevation
Sublimity vicinity, Marion County, Oregon.
Photographer: Liz Carter
December 2000.
Negative held by Oregon Parks and Recreation Department, Salem, Oregon
View: Looking northwest
46 of 72
47. Silver Creek Youth Camp: Hillside Cabin #6 interior
Sublimity vicinity, Marion County, Oregon.
Photographer: Liz Carter
December 2000.
Negative held by Oregon Parks and Recreation Department, Salem, Oregon
View: Looking north.
47 of 72
48. Silver Creek Youth Camp: Hillside Wash House and Latrine
Sublimity vicinity, Marion County, Oregon.
Photographer: Liz Carter
September 2000.
Negative held by Oregon Parks and Recreation Department, Salem, Oregon
View: Looking north at west and south (front) elevations.
48 of 72
49. Silver Creek Youth Camp: Hemlock Camp Wood Shed
Sublimity vicinity, Marion County, Oregon.
Photographer: Liz Carter
December 2000.
Negative held by Oregon Parks and Recreation Department, Salem, Oregon
View: Looking southeast at southwest (front) elevation.
49 of 72
50. Silver Creek Youth Camp: View of Bear Creek Camp from North Service Road turnaround.
Sublimity vicinity, Marion County, Oregon.
Photographer: Liz Carter
December 2000.
Negative held by Oregon Parks and Recreation Department, Salem, Oregon
View: Looking east.
50 of 72

United States Department of the Interior
National Park Service

National Register of Historic Places
Continuation Sheet

Section number **Photographs** Page **10**

Silver Creek Youth Camp, Marion Co., Oregon

51. Silver Creek Youth Camp: Hillside Camp
Sublimity vicinity, Marion County, Oregon.
Photographer: Liz Carter
December 2000.
Negative held by Oregon Parks and Recreation Department, Salem, Oregon
View: Looking southwest from Wash House and Latrine down hill at cabins
51 of 72
52. Silver Creek Youth Camp: Park Road
Sublimity vicinity, Marion County, Oregon.
Photographer: Liz Carter
December 2000.
Negative held by Oregon Parks and Recreation Department, Salem, Oregon
View: Looking northwest from intersection with North Service Road.
52 of 72
53. Silver Creek Youth Camp: Administration Parking Area
Sublimity vicinity, Marion County, Oregon.
Photographer: Liz Carter
December 2000.
Negative held by Oregon Parks and Recreation Department, Salem, Oregon
View: Looking north.
53 of 72
54. Silver Creek Youth Camp: South Service Road Turnaround at Hemlock Camp
Sublimity vicinity, Marion County, Oregon.
Photographer: Liz Carter
December 2000.
Negative held by Oregon Parks and Recreation Department, Salem, Oregon
View: Looking south toward Hemlock Camp.
54 of 72
55. Silver Creek Youth Camp: South Service Road from Hemlock Camp.
Sublimity vicinity, Marion County, Oregon.
Photographer: Liz Carter
December 2000.
Negative held by Oregon Parks and Recreation Department, Salem, Oregon
View: Looking north.
55 of 72
56. Silver Creek Youth Camp: North Service Road
Sublimity vicinity, Marion County, Oregon.
Photographer: Liz Carter
December 2000.
Negative held by Oregon Parks and Recreation Department, Salem, Oregon
View: Looking north toward Hillside Camp from near Bear Creek Camp.
56 of 72

United States Department of the Interior
National Park Service

National Register of Historic Places
Continuation Sheet

Section number **Photographs** Page **11**

Silver Creek Youth Camp, Marion Co., Oregon

57. Silver Creek Youth Camp: North Service Road approaching Bear Creek Camp.
Sublimity vicinity, Marion County, Oregon.
Photographer: Liz Carter
December 2000.
Negative held by Oregon Parks and Recreation Department, Salem, Oregon
View: Looking southeast.
57 of 72
58. Silver Creek Youth Camp: South Silver Creek Trail
Sublimity vicinity, Marion County, Oregon.
Photographer: Liz Carter
September 2000.
Negative held by Oregon Parks and Recreation Department, Salem, Oregon
View: Looking north toward Playing field from vicinity of Trickle Falls.
58 of 72
59. Silver Creek Youth Camp: Concrete Stairs to trails leading to Help's and Staff Quarters
Sublimity vicinity, Marion County, Oregon.
Photographer: Liz Carter
December 2000.
Negative held by Oregon Parks and Recreation Department, Salem, Oregon
View: Looking west.
59 of 72
60. Silver Creek Youth Camp: Trickle Falls Footbridge
Sublimity vicinity, Marion County, Oregon.
Photographer: Liz Carter
September 2000.
Negative held by Oregon Parks and Recreation Department, Salem, Oregon
View: Looking west from east side of Silver Creek.
60 of 72
61. Silver Creek Youth Camp: South Silver Creek Footbridge to Play Field/Dining Hall
Sublimity vicinity, Marion County, Oregon.
Photographer: Liz Carter
December 2000.
Negative held by Oregon Parks and Recreation Department, Salem, Oregon
View: Looking west.
61 of 72
62. Silver Creek Youth Camp: Hemlock Foot Bridge
Sublimity vicinity, Marion County, Oregon.
Photographer: Liz Carter
October 2000.
Negative held by Oregon Parks and Recreation Department, Salem, Oregon
View: Looking south.
62 of 72

United States Department of the Interior
National Park Service

National Register of Historic Places
Continuation Sheet

Section number **Photographs Page 12**

Silver Creek Youth Camp, Marion Co., Oregon

63. Silver Creek Youth Camp: Playing Fields
Sublimity vicinity, Marion County, Oregon.
Photographer: Liz Carter
September 2000.
Negative held by Oregon Parks and Recreation Department, Salem, Oregon
View: Looking east from Administration Area.
63 of 72
64. Silver Creek Youth Camp: East side Play Field, Swimming Pond (l) and Swimming Pool (r)
Sublimity vicinity, Marion County, Oregon.
Photographer: Liz Carter
December 2000.
Negative held by Oregon Parks and Recreation Department, Salem, Oregon
View: Looking west.
64 of 72
65. Silver Creek Youth Camp: Swimming Pond and Bridge
Sublimity vicinity, Marion County, Oregon.
Photographer: Liz Carter
September 2000.
Negative held by Oregon Parks and Recreation Department, Salem, Oregon
View: Looking north.
65 of 72
66. Silver Creek Youth Camp: Swimming Pond
Sublimity vicinity, Marion County, Oregon.
Photographer: Liz Carter
September 2000.
Negative held by Oregon Parks and Recreation Department, Salem, Oregon
View: Looking south from near footbridge.
66 of 72
67. Silver Creek Youth Camp: Swimming Pond and Dock
Sublimity vicinity, Marion County, Oregon.
Photographer: Liz Carter
October 2000.
Negative held by Oregon Parks and Recreation Department, Salem, Oregon
View: Looking north.
67 of 72
68. Silver Creek Youth Camp: Dam at Silver Creek which forms Swimming Pond
Sublimity vicinity, Marion County, Oregon.
Photographer: Liz Carter
October 2000.
Negative held by Oregon Parks and Recreation Department, Salem, Oregon
View: Looking west.
68 of 72

United States Department of the Interior
National Park Service

National Register of Historic Places
Continuation Sheet

Section number **Photographs** Page **13**

Silver Creek Youth Camp, Marion Co., Oregon

69. Silver Creek Youth Camp: Dam and Footbridge on north end of Swimming Pond
Sublimity vicinity, Marion County, Oregon.
Photographer: Liz Carter
October 2000.
Negative held by Oregon Parks and Recreation Department, Salem, Oregon
View: Looking east.
69 of 72
70. Silver Creek Youth Camp: Reservoir
Sublimity vicinity, Marion County, Oregon.
Photographer: Liz Carter
October 2000.
Negative held by Oregon Parks and Recreation Department, Salem, Oregon
View: Looking west toward Youth Camp from hillside above North Service Road.
70 of 72
71. Silver Creek Youth Camp: Council Circle
Sublimity vicinity, Marion County, Oregon.
Photographer: Liz Carter
October 2000.
Negative held by Oregon Parks and Recreation Department, Salem, Oregon
View: Looking west from stage area.
71 of 72
72. Silver Creek Youth Camp: Bell, Concrete Steps and Flagpole
Sublimity vicinity, Marion County, Oregon.
Photographer: Liz Carter
December 2000.
Negative held by Oregon Parks and Recreation Department, Salem, Oregon
View: Looking north.
72 of 72



SILVER
CREEK
RECREATIONAL
AREA

Silver Creek Youth Camp
Sublimity, Marion Co., OR

1 of 72



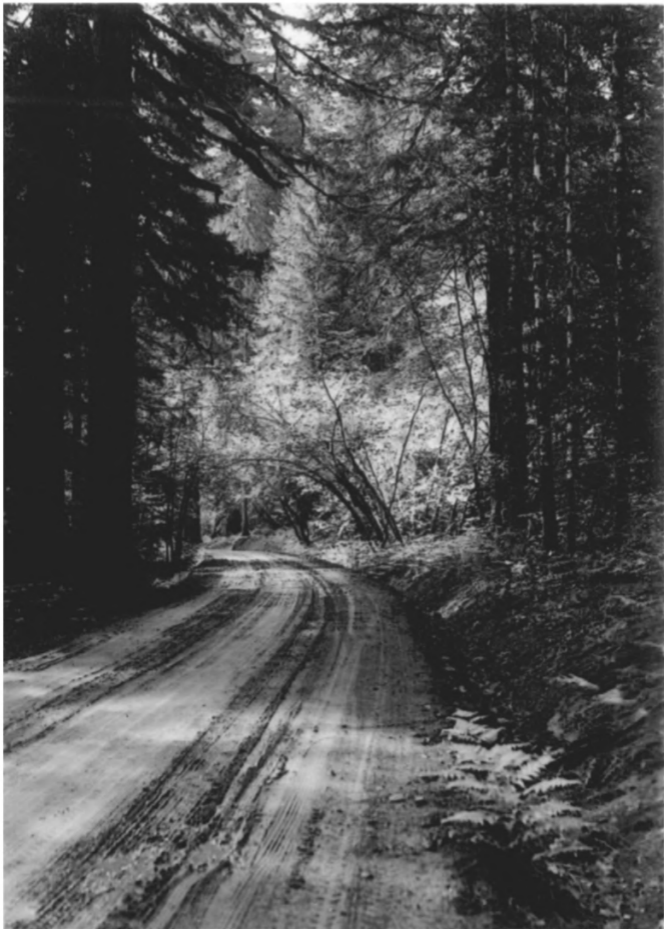
SMITH CREEK
YOUTH CAMP

SILVER CREEK
YOUTH CAMP

Silver Creek Youth Camp

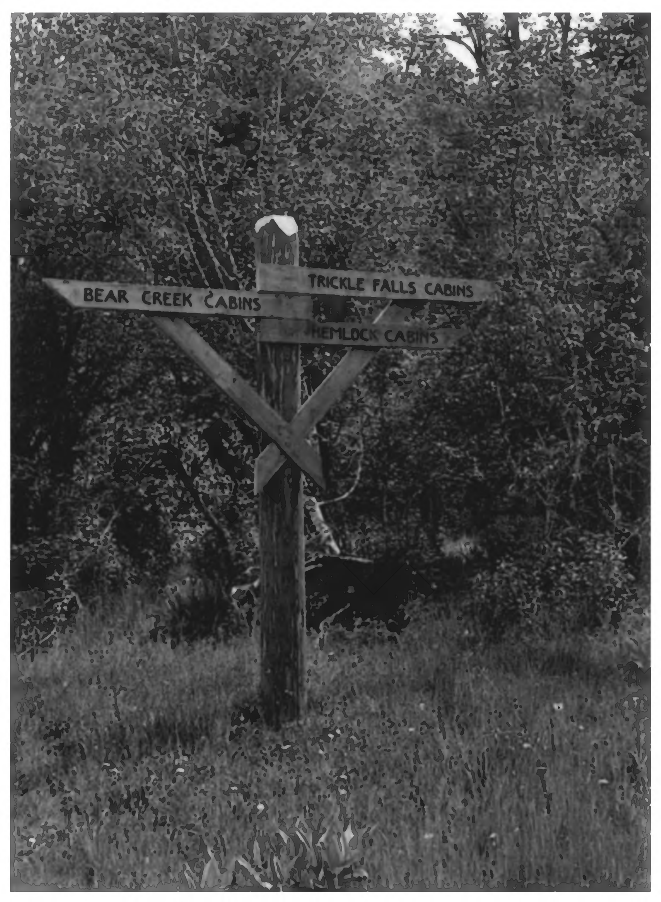
Sublimity, Marion Co., OR

2 of 72



Silver Creek Youth Camp
Sublimity, Marion Co., OR

3 of 72



BEAR CREEK CABINS

TRICKLE FALLS CABINS

HEMLOCK CABINS

Silver Creek Youth Camp
Sublimity, Marion Co., OR

4 of 72



Silver Creek Youth Camp
Sublimity, Marion Co., OR
5 of 72



~~Silver Creek Youth Camp~~
Sublimity, Marion Co., OR
Silver Creek Youth Camp

6 of 72



SILVER CREEK YOUTH CAMP
700 N. 1st St., Madras, OR
Silver Creek Youth Camp

7 of 72



Silver Creek Youth Camp
Sublimity, Marion Co, OR

8 of 72



SILVER CREEK YOUTH CAMP
Sublimity, Marion Co., OR

9 of 72



~~Silver Creek Youth Camp~~ Silver Creek Youth Camp
Sublimity, Marion Co, OK

10 of 72



Silver Creek Youth Camp
Sublimity, Marion Co., OK

11 of 72



~~SILVER CREEK YOUTH CAMP~~ SILVER CREEK YOUTH CAMP
Sublimity, Marion Co, OK

12 of 72



river creek youth camp
Sublimity, Marion Co., OK

13 of 72



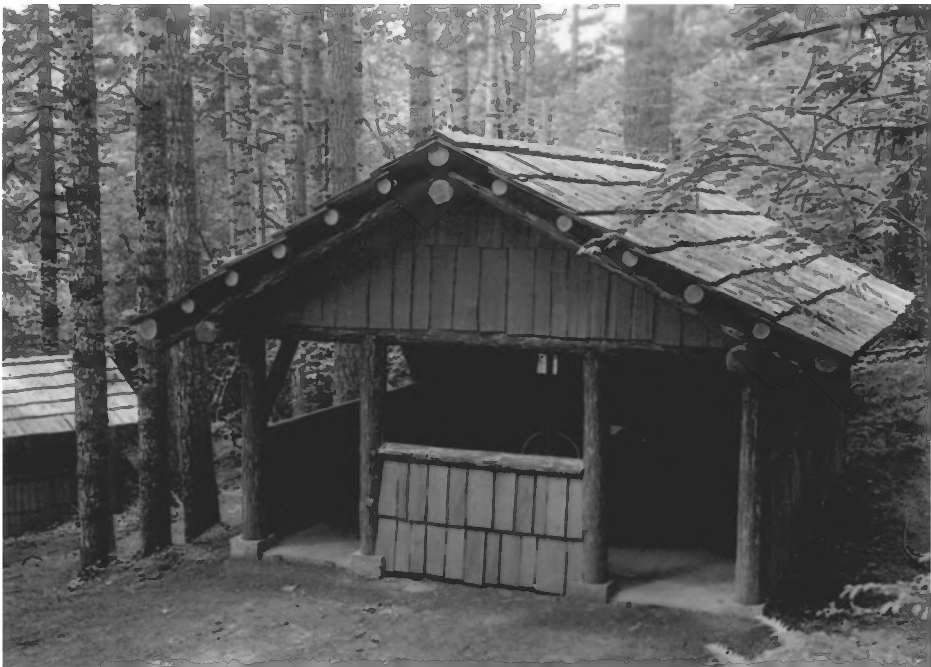
~~RIVER CREEK~~ YOUTH CAMP Silver Creek Youth Camp
Sublimity, Marion Co., OR

14 of 72



← Silver Creek Youth Camp
Sublimity, Marion Co., OR

15 of 72



-river creek youth camp
sublimity, Marion Co., OR

16 of 72



Silver Creek Youth Camp
Sublimity, Marion Co., OR

17 of 72



Silver Creek Youth Camp
Sublimity, Marion Co, OR Silver Creek Youth Camp

18 of 72



Silver Creek Youth Camp
Sublimity, Marion Co., OR

19 of 72



Silver Creek Youth Camp
Sublimity, Marion Co., OR

20 of 72



Silver Creek Youth Camp
Sublimity vic., Marion Co., Oregon

21 of 72



Silver Creek Youth Camp

Sublimity vic., Marion Co., Oregon

22 of 72



Silver Creek Youth Camp
Sublimity vicinity. Marion Co., Oregon

23 of 72



Silver Creek Youth Camp

Sublimity vic., Marion Co., Oregon

24 of 72



Silver Creek Youth Camp
Sublimity vic. Marion Co. Oregon
25 of 72



Silver Creek Youth Camp
Sublimity vic, Marion Co., Oregon
26 of 72



Silver Creek Youth Camp

0210102010M20
H9NNN I102010M20

Sublimity vic, Marion Co, Oregon

27 of 72



Silver Creek Youth Camp

Sublimity vic, Marion Co, Oregon

28 of 72



Silver Creek Youth Camp
Sublimity vic., Marion Co., Oregon

29 of 72



Silver Creek Youth Camp
Sublimity vic, Marion Co., Oregon

30 of 42



Silver Creek Youth Camp
Sublimity vicinity, Marion Co., Oregon
31 of 72



Silver Creek Youth Camp

Sublimity vic., Marion Co., Oregon

32 of 72



Silver Creek Youth Camp.
Sublimity vicinity, Marion Co., Oregon
33 of 72



Silver Creek Youth Camp
Sublimity vicinity, Marion Co., Oregon
34 of 72

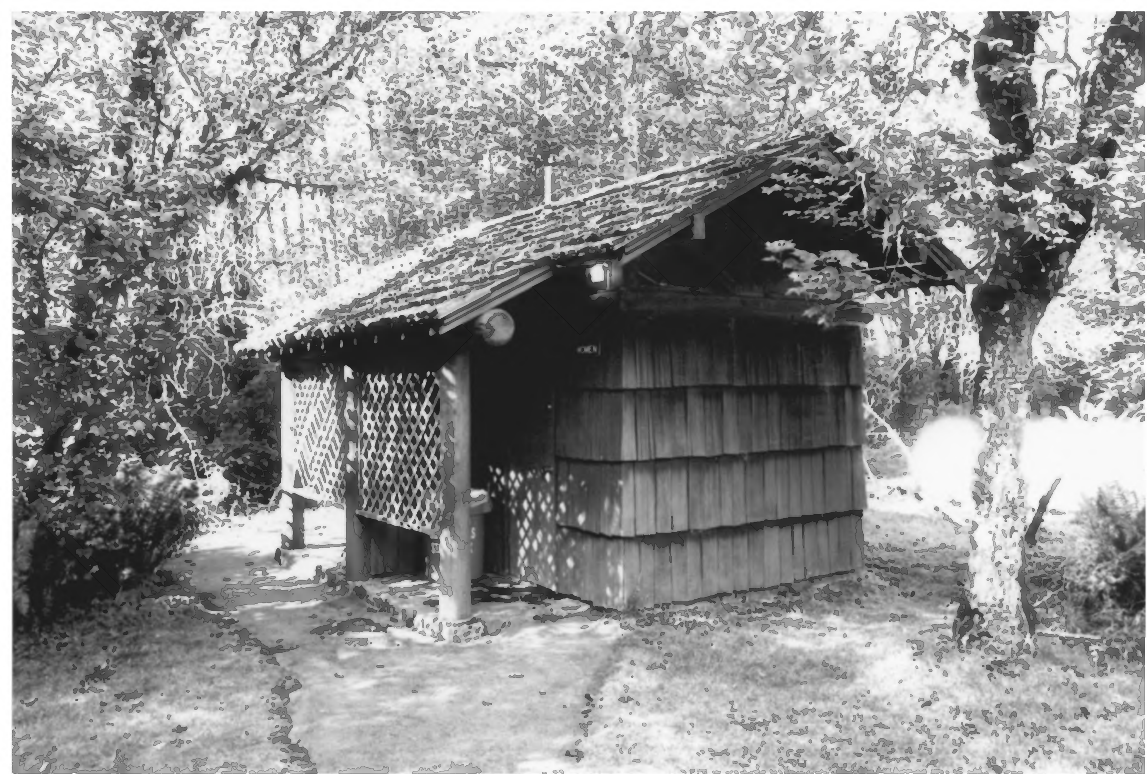


Silver Creek Youth Camp

HERNIM IITZOTIOTZOT

Sublimity vic. Marion Co., Oregon

35 of 72



Silver Creek Youth Camp

Sublimity vicinity, Marion Co., Oregon

36 of 72



Silver Creek Youth Camp
Sublimity vic, Marion Co., Oregon

37 of 72



Silver Creek Youth Camp
Sublimity vic., Marion Co., Oregon

38 of 72



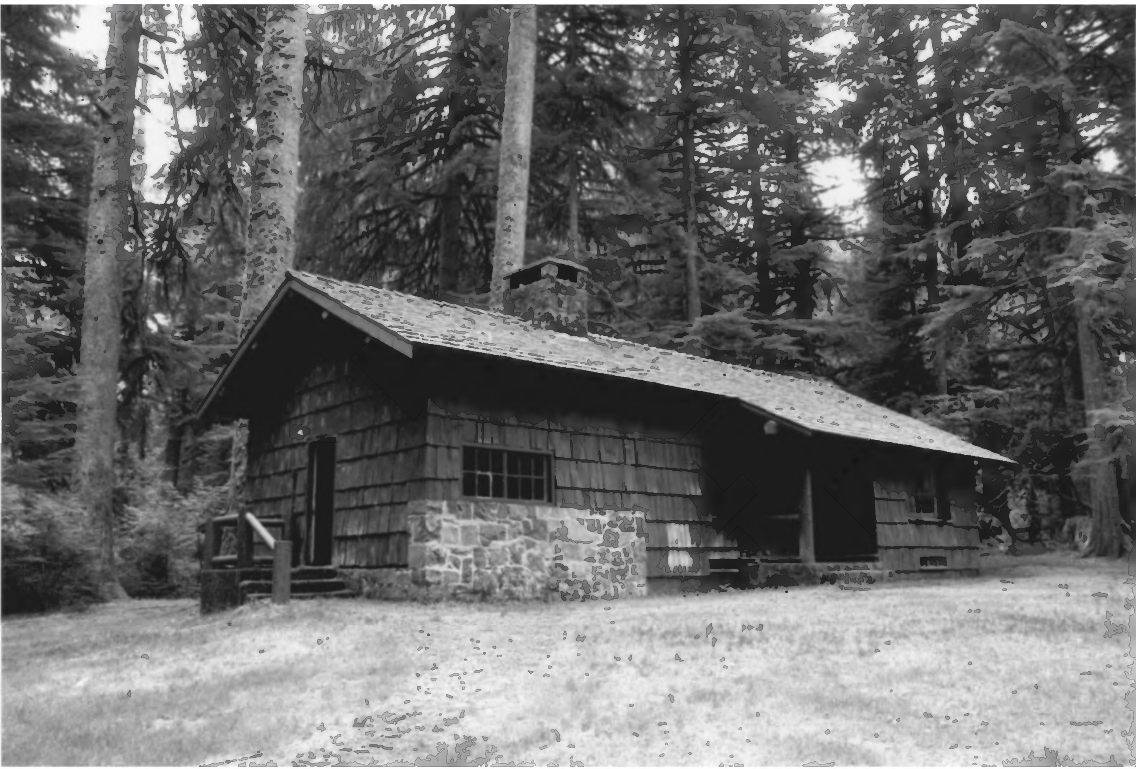
Silver Creek Youth Camp
Sublimity vic., Marion Co., Oregon
89 of 72



Silver Creek Youth Camp

Sublimity vicinity, Marion Co., Oregon

40 of 72



Silver Creek Youth Camp

Sublimity vic., Marion Co., Oregon

41 of 72



Silver Creek Youth Camp
Sublimity vic, Marion Co., Oregon
42 of 72



Silver Creek Youth Camp

Sublimity vic, Marion Co., Oregon

43 of 72



Silver Creek Youth Camp

Sublimity vic., Marion Co., Oregon

44 of 72

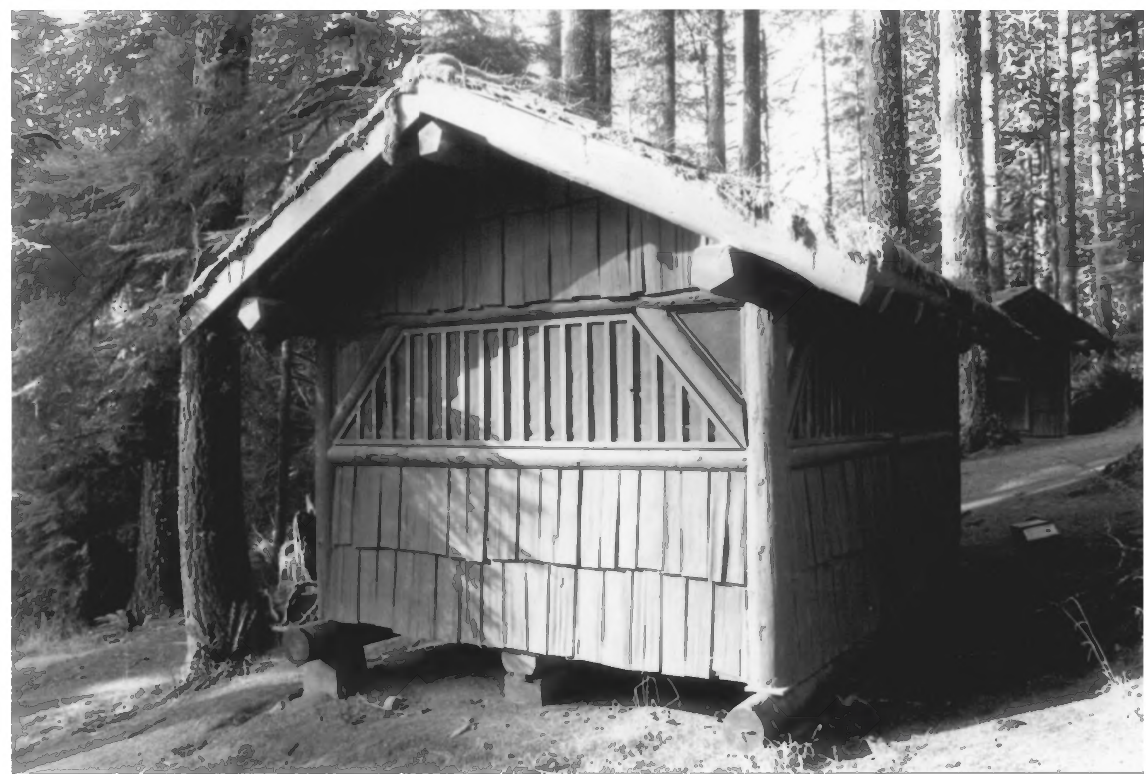


Silver Creek Youth Camp

UNHANN I I 1 2 0 1 0 1 2 0

Sublimity vic., Marion Co., Oregon

45 of 72



Silver Creek Youth Camp
Sublimity vic., Marion Co., Oregon

46 of 72

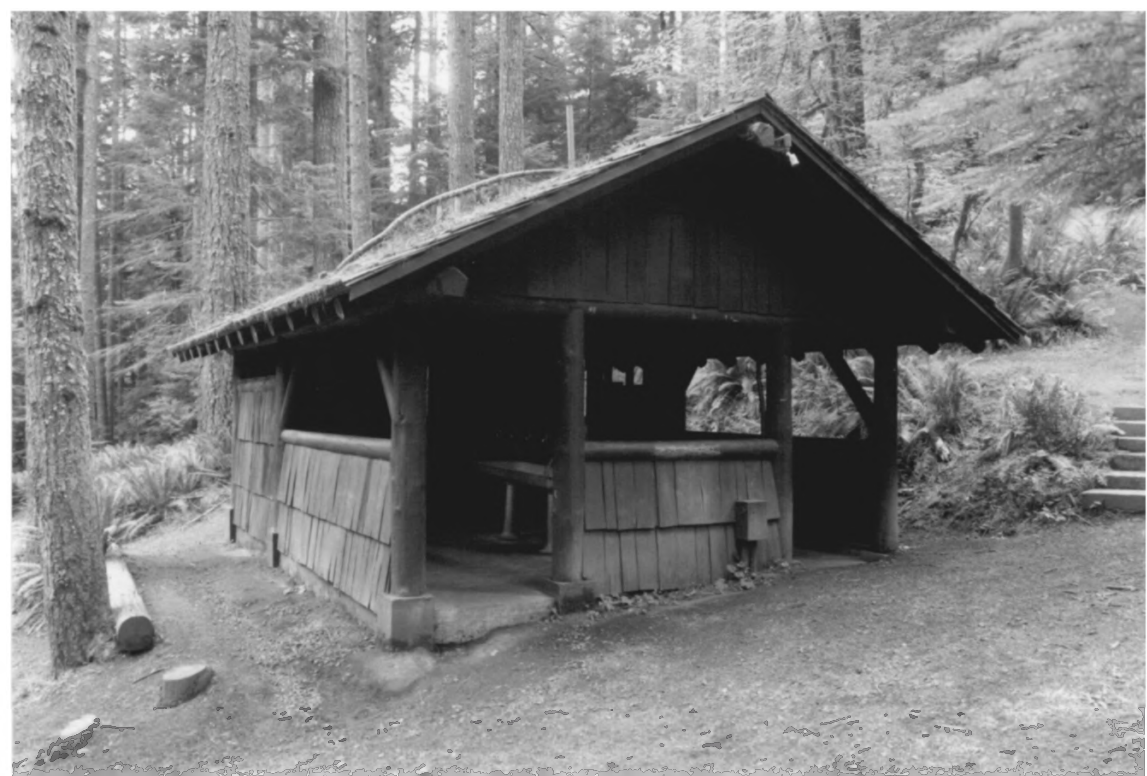


Silver Creek Youth Camp

BTNN IZZAIONZO

Sublimity vic., Marion Co., Oregon

47 of 72



Silver Creek Youth Camp

Sublimity vic., Marion Co., Oregon

48 of 72



Silver Creek Youth Camp
Sublimity vic., Marion Co., Oregon

49 of 72



Silver Creek Youth Camp

Sublimity vic., Marion Co., Oregon

50 of 72



Silver Creek Youth Camp
Sublimity vic, Marion Co., Oregon
51 of 72



Silver Creek Youth Camp
Sublimity vic, Marion Co., Oregon
52 of 72



Silver Creek Youth Camp

Sublimity vic., Marion Co., Oregon

53 of 72



Silver Creek Youth Camp
Sublimity vic; Marion Co., Oregon
54 of 72



Silver Creek Youth Camp

Sublimity vic., Marion Co., Oregon

55 of 72



Silver Creek Youth Camp

Sublimity vic, Marion Co., Oregon

56 of 72



Silver Creek Youth Camp

Sublimity vic., Marion Co, Oregon

57 of 73



Silver Creek Youth Camp

Sublimity vic., Marion Co., Oregon

58 of 72



Silver Creek Youth Camp

Sublimity vic., Marion Co., Oregon

59 of 72



Silver Creek Youth Camp

Sublimity vic., Marion Co., Oregon

60 of 72



Silver Creek Youth Camp

Sublimity vic., Marion Co., Oregon

61 of 72



Silver Creek Youth Camp

Sublimity vic., Marion Co., Oregon

62 of 72



Silver Creek Youth Camp
Sublimity vicinity, Marion Co., Oregon

63 of 72



Silver Creek Youth Camp

Sublimity vic., Marion Co., Oregon

Lot of 72



Silver Creek Youth Camp

Sublimity vic., Marion Co., Oregon

65 d 72



Silver Creek Youth Camp
Sublimity vic., Marion Co., Oregon

66 of 72



Silver Creek Youth Camp

Sublimity vic., Marion Co., Oregon

67 of 72



Silver Creek Youth Camp
Sublimity vic., Marion Co., Oregon

68 of 72



Silver Creek Youth Camp
Sublimity vic., Marion Co., Oregon

69 of 72



Silver Creek Youth Camp
Sublimity vic., Marion Co., Oregon
70 of 72



Silver Creek Youth Camp
Sublimity inc., Marion Co., Oregon
71 of 72



Silver Creek Youth Camp

0210102011 111111

Sublimity vic, Marion Co., Oregon

72 d 72