

United States Department of the Interior  
National Park Service

# National Register of Historic Places Registration Form

This form is for use in nominating or requesting determinations for individual properties and districts. See instructions in National Register Bulletin, *How to Complete the National Register of Historic Places Registration Form*. If any item does not apply to the property being documented, enter "N/A" for "not applicable." For functions, architectural classification, materials, and areas of significance, enter only categories and subcategories from the instructions. **Place additional certification comments, entries, and narrative items on continuation sheets if needed (NPS Form 10-900a).**

## 1. Name of Property

historic name State Library of Oregon

other names/site number Oregon State Library

Name of Multiple Property Listing Oregon New Deal Resources from the PWA or WPA, 1933-1943

(Enter "N/A" if property is not part of a multiple property listing)

## 2. Location

street & number 250 Winter Street NE  not for publication

city or town Salem  vicinity

state Oregon code OR county Marion code 047 zip code 97301

## 3. State/Federal Agency Certification

As the designated authority under the National Historic Preservation Act, as amended,

I hereby certify that this  nomination \_\_\_ request for determination of eligibility meets the documentation standards for registering properties in the National Register of Historic Places and meets the procedural and professional requirements set forth in 36 CFR Part 60.

In my opinion, the property  meets \_\_\_ does not meet the National Register Criteria. I recommend that this property be considered significant at the following level(s) of significance: \_\_\_ national  statewide \_\_\_ local

Applicable National Register Criteria:  A \_\_\_ B  C \_\_\_ D

Ian P. Johnson  
Ian P. Johnson (Mar 2, 2022 09:44 PST)

03/02/22

Signature of certifying official/Title: Associate Deputy State Historic Preservation Officer Date

Oregon State Historic Preservation Office  
State or Federal agency/bureau or Tribal Government

In my opinion, the property \_\_\_ meets \_\_\_ does not meet the National Register criteria.

Signature of commenting official \_\_\_\_\_ Date \_\_\_\_\_

Title \_\_\_\_\_ State or Federal agency/bureau or Tribal Government \_\_\_\_\_

## 4. National Park Service Certification

I hereby certify that this property is:

- entered in the National Register  determined eligible for the National Register
- determined not eligible for the National Register  removed from the National Register
- other (explain:) \_\_\_\_\_

Signature of the Keeper \_\_\_\_\_ Date of Action \_\_\_\_\_

State Library of Oregon  
 Name of Property

Marion Co., OR  
 County and State

**5. Classification**

**Ownership of Property**  
 (Check as many boxes as apply.)

- private
- public - Local
- public - State
- public - Federal

**Category of Property**  
 (Check only **one** box.)

- building(s)
- district
- site
- structure
- object

**Number of Resources within Property**  
 (Do not include previously listed resources in the count.)

Contributing	Noncontributing	
1		buildings
		site
		structure
		object
1	0	<b>Total</b>

**Number of contributing resources previously listed in the National Register**

N/A

**6. Function or Use**

**Historic Functions**  
 (Enter categories from instructions.)

EDUCATION: Library  
 \_\_\_\_\_  
 \_\_\_\_\_  
 \_\_\_\_\_  
 \_\_\_\_\_  
 \_\_\_\_\_  
 \_\_\_\_\_

**Current Functions**  
 (Enter categories from instructions.)

EDUCATION: Library  
 \_\_\_\_\_  
 \_\_\_\_\_  
 \_\_\_\_\_  
 \_\_\_\_\_  
 \_\_\_\_\_

**7. Description**

**Architectural Classification**  
 (Enter categories from instructions.)

MODERN MOVEMENT: Modernist  
 \_\_\_\_\_  
 MODERN MOVEMENT: Art Deco  
 \_\_\_\_\_  
 \_\_\_\_\_  
 \_\_\_\_\_  
 \_\_\_\_\_

**Materials**  
 (Enter categories from instructions.)

foundation: STONE: Granite  
 \_\_\_\_\_  
 walls: STONE: Marble  
 \_\_\_\_\_  
 roof: BALLASTED MEMBRANE  
 \_\_\_\_\_  
 other: METAL: Bronze  
 \_\_\_\_\_  
 \_\_\_\_\_

State Library of Oregon  
Name of Property

Marion Co., OR  
County and State

---

### Narrative Description

(Describe the historic and current physical appearance and condition of the property. Describe contributing and noncontributing resources if applicable. Begin with a **summary paragraph** that briefly describes the general characteristics of the property, such as its location, type, style, method of construction, setting, size, and significant features. Indicate whether the property has historic integrity).

### Summary Paragraph

The State Library of Oregon is located in Salem on one block of the Capitol Mall (the Capitol State Park), just northwest of the State Capitol building. In March 1937, the Oregon State Legislature appropriated \$550,000 and \$450,000 was provided through the Public Works Administration (PWA) for construction of a State Library. It was completed and dedicated in 1939.<sup>1</sup> The library was the first building on the mall after the Capitol and includes similar finish materials on the exterior and in the interior.<sup>2</sup> The library is situated toward the west-center part of the block and faces east. It has three full stories (measuring 199.5 by 103 feet), a full basement, and a smaller penthouse (85 by 37 feet) above the third floor. From the ground to the top of the parapet is 54 feet; the penthouse adds eight feet. The total square footage is 92,742.<sup>3</sup> The building structure is reinforced concrete frame with columns, beams, and a concrete floor slab/joist system. The exterior walls are brick covered with marble veneer in a rectangle and strip pattern. Non weight bearing partitions are hollow clay tile that has been covered with marble, wood paneling, or plaster.<sup>4</sup> The symmetrical organization of the exterior is carried into the interior where on the first floor three exterior doors open to individual vestibules that open into a single large lobby that leads to elevator lobbies and elevators; and corridors, reception areas, and offices on the north and south. General library services were originally provided on the second floor in the Public Catalog Room (west side), General Reference Room and Oregon Reference Room (north side), Government Room, and Librarian's Office (east side, shown in Photo 15). The library's style is Modernist or Stripped Classical, characterized by intact classical structure and proportions but displaying minimal ornamentation and incisions as replacements for moldings. Art deco ornamentation, including geometric patterns, pine-and-needle designs, and sun burst shapes embellish the exterior and interior. In recognition of the building's purpose, symbols of learning and reading are carved in marble in the panels over the main entry doors. Simple, formal, landscaping contains some historic elements, including boxwood hedges but the landscaping design was significantly revised in 1951 and is not considered historic though is compatible with plantings in the Capitol State Park. The landscaping currently features ornamental trees, rhododendrons and other local trees and shrubs at building corners. The library is a PWA building in Modernist style; its character-defining features include its carved stone, streamlined symmetrical design that incorporates traditional proportions, uses incisions rather than moldings, and exhibits reduced ornamentation. The few alterations on the exterior involved relocating the loading dock and adding access ramps. The alterations do not adversely impact the visual appearance of the building, and it retains the historic integrity of its design as completed in 1939. More changes have been made to interior spaces but the east public entry, corridors, and areas that were used for the public and library functions have maintained their original appearance. As for interior character features, the original sculpture of the pioneer woman reading to child (this has been called *Mother and Child* in Oregon's WPA Guide),<sup>5</sup> other art deco ornamentation on walls, doors, ceiling moldings, and light fixtures still characterize the interior. Sufficient interior spaces retain historic integrity of design, materials, and workmanship.

---

<sup>1</sup> <https://www.oregon.gov/library/operations/Pages/History.aspx>, accessed June 27 2021.

<sup>2</sup> The common materials include white marble wall cladding, a granite base, bronze window frames and trim on the exterior and rose tan Montana travertine, terrazzo flooring, plaster walls and ceilings, oak woodwork in the interior.

<sup>3</sup> Marion County Information Technology, File R89530 for Parcel 073W27AA00100, Figure 4.

<sup>4</sup> George McMath and Robert Dortignacq. Historical Site Assessment: Oregon State Library Building. McMath-Dortignacq Architects, April 1998, 3-5.

<sup>5</sup> *Oregon: The End of the Trail*, American Guide Series by the Workers of the Writers' Program of the Works Progress Administration in the State of Oregon, Rev. ed. Portland: Binford & Mort, 1951, 131, also described on 232.

State Library of Oregon  
Name of Property

Marion Co., OR  
County and State

---

## Narrative Description

### Exterior Setting and Landscaping

The library building and its immediate surrounding property encompass 1.71 acres, Block 83, lot 6-10, FR 1-5, and a vacated alley. This area comprises the extent of the property to be proposed for listing in the National Register.

The library is the only building on its block. It is surrounded by manicured lawn on all four sides and walkways between the building and the property boundaries. The building is oriented in an east-west axis with entrances on both the east and west sides of the structure. The main entrance to the library building faces east toward the mall. Granite steps (20' x 48') lead to three entry doors on this side of the building. There is a loading dock and driveway on the north side of the building.

Landscaping includes some originally planned elements, such as the boxwood hedges that border the walkway to the building on the west side, but the landscape design was significantly altered in 1951 and does not retain a significant association to the State Library. Boxwood hedges also are planted along access ramps. Distinctive trees in the library block that are identified on the State Capitol State Park walking tour brochure include: Norway Maple (*Acer platanoides*), Dove Tree (*Davidia involucrate*), and Northern Red Oak (*Quercus rubric*). The ornamental mall plantings and re-landscaping were noted in the Historical Assessment as having created a soft 'garden' setting that contrasts with the building's Modernistic design and the effective original impact made by the building set upon a flat lawn.<sup>6</sup>

### Description of the Exterior

The building is a symmetrical, rectangular structure. Three stories and a full basement form the central rectangular core on an east-west axis slightly recessed at the north and south ends. The penthouse comprises a fourth floor that is set back from the lower stories on all sides. The four sides are very similar to each other with slight variations in the windows, doors, and ramp. Visually, the penthouse does not detract from the scale and balance of the building since it is set back from the footprint of the building on all four sides.

*East:* The main entrance is on the east side facing the mall. A group of three sets of bronze double doors at the top of granite steps measure 20 feet x 48 feet (Photo 1). The three bronze entry doors are glass; the glass inset is a large canted rectangle. Above each door is an octagonal transom window. Above each transom is a marble base and a bronze railing fashioned in a geometric art deco design of rectangles and "X"s. Two pairs of windows are on each side of the entry doors. Bronze-framed windows extend from the second to the third stories. The windows are in pairs, each divided into quarters and made up of eight panes (Photo 2). A bronze plate separates the windows between the second and third floors, each plate is incised with a rectangle that is punctuated with a bronze sunburst. Each window unit is framed by recessed borders. There are seven sets of windows on the east side. A slightly recessed parapet wraps around the top of the building (Photo 3 shows parapet on northwest side). An access ramp runs from the southeast corner north to the main doors on the terrace. The cornerstone is carved with "1939" and is the lower corner block at the southeast corner.

*South:* The south elevation faces the Capitol block. The southern elevation consists of five bays of windows similar to those on the east elevation – basement windows, one pair for each first floor window and two pairs separated by bronze plates for the second and third floor windows (Photo 9).

---

<sup>6</sup> Ibid.

State Library of Oregon

Name of Property

Marion Co., OR

County and State

*West:* A second entry is accessed through a double door at the southwest. Because it is closer to a street with parking, this entry has become the main access door. There is also a single door with a globe light just north of the double door. Above the double door is a bronze slab canopy (Photo 8). There is also a second access ramp that leads to the doors. Windows are consistent with the other elevations in their symmetrical pattern and include windows at the basement.

*North:* A loading dock and driveway on the north side of the building provide a third entrance for deliveries. It is covered by a flat bronze slab canopy similar in style to the porch covering the doors on the west elevation (Photo 7). A horseshoe drive and small parking area are on the north side. The five sets of windows on the north side do not have the central bronze panels that are in the windows on the east, south, and part of the west elevation but the basement windows are consistent with the other elevations. The north elevation windows extend two stories in height to provide light to the reference room.

### **Exterior Carved Stone – Gabriel Lavare**

On the east side of the building a large round carved seal has been mounted in the center of the top band between the words “State” and “Library.” Gabriel Lavare carved an eagle with wings spread in the upper half of the seal and a sheaf of wheat in the lower half. In the center is a representation of the mission press (Photo 4). One of Oregon’s earliest artifacts, the press was the first press in the Oregon Territory, brought from Hawaii to Wai-il-et-pu in 1839 for printing the Nez Perce alphabet by members of the Whitman Mission. It was taken to Oregon City where a group organized themselves into the Oregon Printing Association and used it to print the first newspaper on the Pacific Coast, the *Oregon Spectator*, first issued on Thursday, February 5, 1846. The press was added to the holdings of the Oregon Historical Society.<sup>7</sup> On either side of the seal, the words “State” and “Library” have been cut into the marble (Photo 6). The representation of the press is a fitting symbol of books and reading on the library building.

At the second floor level on the east side of the building, a marble-based balcony protrudes above each entry door forming a canopy. A repeated carved pinecone and needle design decorates the base of each balcony (Photo 5). The same art deco design is used in the interior design of the building. Each of three panels over the three sets of doors and under each balcony is carved with an open book design and one of three symbols of education in the center, including the owl of wisdom, the tree of knowledge, and the lamp of learning.

### **Interior of the Building**

*First Floor:* The east entrance has three doors that lead into three separate vestibules. The three inner doors lead to a symmetrical common foyer and main lobby (Photos 10 and 11). In the foyer and main lobby are three bays articulated by columns, pilasters, beams and floor and ceiling treatments. Toward the north and south are elevator and stair lobbies. A corridor, reception area, and offices are in the north and south pavilions (Figure 6). The walls are finished with wood paneling or plaster. Floors in the foyer, stair and elevator lobbies are original. In the elevator lobbies, they are terrazzo squares in a checkerboard design with alternating squares and squares with brass divider strips in concentric circles. In each of the three bays of the main lobby, the floor is made up of a four-color compass pattern with brass dividers. Darker strips of flooring divide the floor areas into squares and rectangles. Stack areas are constructed of metal.

*Second Floor:* On the second floor, directly above the main lobby, is the library lobby. The elevator is in the southeast part of the lobby (Photo 12). The Public Catalog and registration desk (in the center bay) are west of the library lobby and the Librarian’s Office (Photo 15) and board room are to the east. The

<sup>7</sup> George Himes. The History of the Press of Oregon: 1839-1850, *Oregon Historical Quarterly*, Vol. 3, No. 4 (December 1902), 329, 337.

State Library of Oregon

Name of Property

Marion Co., OR

County and State

north pavilion has the General Reference Room (Photo 13).and the Oregon Reference Room (now the Patent Room) separated by book shelves and a pair of ornamental doors (originally). Both rooms are two stories high. At the northeast corner is the Government Room (now the Genealogy Room), entered through the stair lobby. The south pavilion contains library offices and work rooms (Figure 7).

*Third Floor:* The third floor has a central north/south corridor with offices and work spaces off both sides. Offices and work spaces are also in the north and south pavilions (Figure 8).

*Penthouse:* Offices are on the penthouse level (Figure 9). Access is by an elevator that was a later addition. Although the original purpose of the penthouse is unknown, it provided additional space of state offices.

*Basement:* The basement includes a conference room that retains historic features including asphalt tile flooring, plaster walls with flat pilasters and plaster cornice molding at the ceiling, and acoustical tile ceiling. Other spaces in the basement include heating and cooling facilities, book stacks, and storage (Figure 5).

Restrooms are on the three main floors south of the elevator.

### **Alterations to the Building**

The State Library building retains the integrity of its design as completed in 1939. No additions have been made to the building, and exterior alterations are modest and unobtrusive. Remodeling has impacted the historic character of interior office spaces, including those on the first floor (north side), third floor, and penthouse. However, integrity is high in the areas frequented by the public, including entry vestibules, lobbies, and elevator cab on the first floor, and those that reflect original library functions, including the library lobby, public catalog room, elevator and stair lobbies, north and south corridors, reference rooms, government rooms, and the Librarian's office.

1950 – Librarian Eleanor Stephens wrote to the Secretary of State on August 8, 1950 regarding needs for the library building, including replacement of some acoustical tiles in the Reference Room, inadequate lighting in the building, insufficient heating, and need for repainting in the halls.<sup>8</sup>

1951 – Landscaping was revised (Plans November 2, 1950).

1954 – Remodeled original light fixtures and added new ones were suggested by Baker-Barkon and relayed by Earl Newberry of Church, Newberry & Roehr, dated November 3, 1954.

1956 – Fluorescent light fixtures replaced the original Fred Baker-designed light fixtures in the Reference Room, Genealogy Room, Catalog Room, Librarian's Office, and other second floor rooms (Baker-Barkon shop drawings, March 4, 1956).

1960 – Stairs were added to west entrance walkway (Plans, March 1960).

1962 – The north wing of the first floor where part of the vocational education department was originally located was remodeled for the Oregon Tax Court (Plans, October 13, 1961). Original ornamental doors between the Reference Room and the Oregon Reference Room (Patent Room) were removed and reinstalled as side panels to the archway between the Elevator Lobby 228 and Corridor 227.<sup>9</sup>

<sup>8</sup> Record #89A-35, Oregon State Library, Construction, 1935-1939, documents and photographs, Marion County. At Oregon State Archives.

<sup>9</sup> Correspondence from Eloise Ebert, Librarian, to proposed contractors, July 24, 1962.

State Library of Oregon  
Name of Property

Marion Co., OR  
County and State

1963 – Alterations to rear entry and repair to steel structure and roof were completed (Plans, October 22, 1962).

1965 – Elevator extensions were done, including the shipping room elevator which was extended to third floor (Specs, August 4, 1965).

1969 – Floor plans and exterior treatments were designed for a third floor expansion to the west for two levels of stacks (6 and 7), but not built (Drawings, January 20, 1969). Talking Book and Braille Services were moved from the Library Association of Portland (LAP) to the State Library and occupy the first floor of the north wing (Tax Court).

1977 – An access ramp was added leading to the south side of the front entry (Drawings, February 23, 1977). The penthouse on the fourth floor was remodeled for offices. A new stair was added to connect the penthouse to the third floor (Drawings, June 1, 1977).

1983 – Fire and life safety improvements and miscellaneous remodeling were completed. New exit stairs were built at the southeast corner from the first to third floors with new exit doors in Corridors 133, 227, and 315. A new elevator between the third and penthouse floors was installed in the original stairwell (Plans, March 29, 1983). A loading dock with stairs and a canopy was added at the northwest corner of the building for use in loading and unloading books. Doors were installed in an original window opening at the new dock. A loop drive was built to facilitate entry from Chemeketa Street.

1985 – At the southeast corner of the first floor, rooms 107 and 108 were remodeled to accommodate computer facilities (Plans, March 15, 1985). The original knotty pine paneling in Room 107 (the Model School Room) was removed. The librarian's office still has knotty pine paneling (Photo 15).

1993 – Exterior masonry was cleaned, repointed, and sealed (Plans, 1992). The Scott's Mill earthquake did not cause any damage to the State Library building.<sup>10</sup>

1994 – New electric panels and main service wiring were installed.

1995 – The access ramp on southeast side of building was revised to meet updated codes in 1995 and/or 1998. Modifications to the exterior included the addition of a loading dock to the northwest corner of the building and a horseshoe-shaped drive on the north side that provides access to this loading dock.

1998 – The library underwent a major remodel, including installing HVAC with ducts and a roof unit; modifying the southwest corner of the building for use as an alternate public entry while retaining the original dock and canopy; altering men's and women's restrooms on the first, second, and third floors for seismic and accessibility upgrades; rewiring original light fixtures for use of energy-efficient lamps; replacing original locksets with new forged levers; and removing the original loading elevator.<sup>11</sup> The original loading dock on the west elevation of the building was modified in 1998 to allow public entry and to include installation of an access ramp that runs along half of the west elevation of the building toward the double-door entrance.<sup>12</sup>

2000 – Carpeting was installed on the second floor and a display case constructed near the original catalog area (replacing the information desk). When a new reference desk was built for the Reference Room in 2000, Dennis Cunningham created etched granite panels for the desk. A new freight elevator

<sup>10</sup> Jey Wann, per Dave Hegeman email, December 4, 2020.

<sup>11</sup> McMath and Dortignacq, 3-5.

<sup>12</sup> Elisabeth Potter. File memo, August 27, 1997.

State Library of Oregon  
Name of Property

Marion Co., OR  
County and State

was also installed, and the southwest corner of the building (the original location of the loading dock) facing Winter Street was altered significantly.<sup>13</sup>

2019 – The reference desk was removed and the panels were put into storage in the library building.<sup>14</sup>

2020 – Modernization of the third floor (Salem BP 19 0121900) included architectural renovation of interior space on first, second and third floors; renovation of office on third floor plumbing modifications for single user restroom and various sinks; electrical revisions to suit renovated spaces; mechanical equipment replacement and distribution on first, second, and third floors; basement only extension of sprinkler system to third and fifth floors. Additional permits filed for installation of fire sprinkler system.

Modifications to the interior have been extensive in office areas of the first, third, and fourth floors. Most original spaces, materials, and finishes remain and are in good condition, particularly in the public use areas. Overall, the building retains the integrity of its original construction.

---

<sup>13</sup> Dave B. Hegeman, email January 11, 2021.

<sup>14</sup> Ibid.

State Library of Oregon  
Name of Property

Marion Co., OR  
County and State

**8. Statement of Significance**

**Applicable National Register Criteria**

(Mark "x" in one or more boxes for the criteria qualifying the property for National Register listing.)

- A Property is associated with events that have made a significant contribution to the broad patterns of our history.
- B Property is associated with the lives of persons significant in our past.
- C Property embodies the distinctive characteristics of a type, period, or method of construction or represents the work of a master, or possesses high artistic values, or represents a significant and distinguishable entity whose components lack individual distinction.
- D Property has yielded, or is likely to yield, information important in prehistory or history.

**Criteria Considerations**

(Mark "x" in all the boxes that apply.)

Property is:

- A Owned by a religious institution or used for religious purposes.
- B removed from its original location.
- C a birthplace or grave.
- D a cemetery.
- E a reconstructed building, object, or structure.
- F a commemorative property.
- G less than 50 years old or achieving significance within the past 50 years.

**Areas of Significance**

(Enter categories from instructions.)

ARCHITECTURE

EDUCATION

POLITICS/GOVERNMENT

**Period of Significance**

1939-1943

**Significant Dates**

1939 – Date of construction

**Significant Person**

(Complete only if Criterion B is marked above.)

N/A

**Cultural Affiliation** (if applicable)

N/A

**Architect/Builder**

Whitehouse & Church

Hoffman Construction

State Library of Oregon  
Name of Property

Marion Co., OR  
County and State

---

**Period of Significance (justification)**

The period of significance begins in 1939, the year construction was completed, and ends in 1943, the year that funding for New Deal work relief programs ended. Although the State Library was organized in 1905, it did not have its own building until 1939 and the library embarked on its role of providing services to all residents of the state. Until 1943, when funding for WPA projects ended, the State Library administered WPA service projects, including providing small local libraries with personnel to catalog and mend books in order to help expand education across the state.

---

**Criteria Considerations (explanation, if necessary)**

N/A

---

**Statement of Significance Summary Paragraph** (Provide a summary paragraph that includes level of significance, applicable criteria, justification for the period of significance, and any applicable criteria considerations).

The State Library of Oregon is nominated under the *Oregon New Deal Resources from the PWA or WPA, 1933-1943* Multiple Property Document, and is eligible for the National Register under Criteria A and C, for its statewide significance, in the areas of Education, Politics/Government, and Architecture. It is significant under Criterion A as a public work relief project of the Public Works Administration (PWA) and Works Progress Administration (WPA) in providing employment and expanding services. It is significant in the area of Education as the only library that served all residents of the state of Oregon through local libraries and the Oregon history collection; in addition, it is a resource for state legislators and employees of state agencies and for users of the Talking Book and Braille library. It is significant in the area of Politics/Government as a public works project funded through the PWA that provided a needed building for public benefit and use, as well as, gave much needed employment to the architects, contractor, landscape architect, and others. Under Criterion C in the area of Architecture, the State Library is the most important architectural design by Whitehouse & Church of the New Deal period and an outstanding example of Modernist architecture in Oregon. The State Library was constructed with superior workmanship and embellished with carvings by Gabriel Lavare, a gifted sculptor of the New Deal. The period of significance for the building is from 1939, the year the library building was completed and when it was able to provide services to all residents of the state, to 1943, the final year of New Deal funding for work relief programs.

---

**Narrative Statement of Significance** (Provide at least one paragraph for each area of significance.)

The State Library of Oregon meets all General Registration Requirements provided in the Multiple Property Document for New Deal construction:

- The nominated property was built within the chronological period of the New Deal (1933-1943) within the political boundaries of the State of Oregon.
- It was built with funding provided through the Public Works Administration (PWA) and the Works Progress Administration (WPA), both New Deal programs, and State funding. The proportion of PWA funding to state funding was 55 to 45 percent in 1939.
- The nominated property exemplifies New Deal construction that provided employment to unemployed persons through its work relief programs and is one of many New Deal projects that provided and expanded services to residents of the state for which funding was not otherwise available.
- The nominated building communicates the character defining features of its New Deal architecture, has been only minimally altered on the exterior, moderately altered on the interior, and retains its integrity and ability to reflect its purpose-built design and its historic significance.

State Library of Oregon

Name of Property

Marion Co., OR

County and State

The State Library of Oregon also meets property specific registration requirements and is a significant example for the Education property type and Library sub-property type:

1. The nominated property contributed to the education of residents of the state through its period of significance.
2. The nominated property retains integrity reflective of its education significance and its purpose as a building that provided educational services across the state.

## **CRITERION A**

The requirements for a PWA or WPA funded building in Oregon to be significant under Criterion A include evidence of its funding through one or both of the public works programs. In the case of the State Library, funding was provided through both.

The requirements for a building funded through the PWA or WPA to be considered significant under Criterion A include evidence that the building meets the needs of the community that it was constructed to serve. Although specific functions have changed over time, the purpose of the State Library has remained the same. The State Library's vision is to provide equitable access to library and information services for all Oregonians. The state library is significant in the state as a PWA project that provided employment during the Depression. Without this funding the library may not have been built. The State Library shares this significance with the University of Oregon library, also funded as a PWA project.<sup>15</sup> Artwork and furnishings were provided through the WPA to both libraries. The State Library is unique, however, in offering services to all residents of the state and is significant at the state level.

### **Area of Significance for Construction as a Public Works Project**

The Capitol Reconstruction Committee oversaw the construction of the new Capitol in 1938. The library was the first of several state government buildings planned and built on the mall to support the Capitol at the south end. The library had occupied the floor above the Senate Chamber until 1914 when the Supreme Court building was completed. At that time, the library was given quarters in the Court building. When fire destroyed the State Capitol in 1935, library contents were also damaged.<sup>16</sup> The designs for the new Capitol building did not include space for the library. The legislature appropriated some money for a separate building and the PWA allocated \$350,000 in 1935 to fund construction of a state library. However, the state constitution at that time prohibited the state from accepting the funds. House Bill 495, passed on March 10, 1937, allowed the Board of Control to accept federal aid for work on state institutions, and the state legislature appropriated \$550,000 for construction of a state library building and the PWA provided \$450,000. The Portland firm of Whitehouse & Church was selected to design the library building. Earl P. Newberry from Whitehouse & Church served as the resident architect for both the Capitol and library.<sup>17</sup> However, construction was delayed again. During the spring of 1937, Governor Charles Martin considered combining the library space in a building with other state offices, and the Secretary of State's office was slow to provide space allocations for the floors to be used by other offices until they would be needed by the library. Two editorials in the *Oregonian* argued that the library deserved its own building.<sup>18</sup> The delay prevented finalizing designs for the library building until the

<sup>15</sup> Kim Emerson. National Register of Historic Places Registration Form for the University of Oregon Library and Memorial Quadrangle, Section 8, August 15, 1989, 4.

<sup>16</sup> Randall B. Kester. "Oregon Legal Heritage: Ex Libris," *Oregon State Bar Bulletin*, June 2003.

<sup>17</sup> Robert Dortignacq. Historical Site Assessment: Oregon State Library Building. McMath-Dortignacq Architects, April 1998, 1.

<sup>18</sup> "A Separate Library," *Oregonian*, May 6, 1937 and "Two Buildings," *Oregonian*, July 9, 1937.

State Library of Oregon

Name of Property

Marion Co., OR

County and State

Capitol Reconstruction Commission missed a PWA deadline for starting construction.<sup>19</sup> Fortunately, the PWA extended the construction start-deadline to February 28, 1938.<sup>20</sup>

Sealed bids for a contractor were solicited on January 14, 1938, and opened on February 11. Hoffman Construction was awarded the contract for \$712,941.<sup>21</sup> Governor Charles H. Martin turned the first spade full of dirt on the building site when the groundbreaking ceremony was held on February 24.<sup>22</sup> Construction proceeded through the spring, and on June 21 a cornerstone laying ceremony was held that consisted of placing a marble block that was carved with the date "1939" on the southeast corner of the building. In June 1939, Short and Brown reported that the building was 90 percent complete, that the estimated construction cost was \$803,445, and that the project cost \$871,119; elsewhere the cost was estimated at \$835,000.<sup>23</sup> One of the casualties of the State Library construction and the times was the destruction of the large and elegant Cooke-Patton house adjacent to the construction site that was razed when no buyer could be found to move it.

In addition to the architects, other professionals were involved in construction and furnishing of the library building. Miles K. Cooper served as structural engineer and Jay Keller was the mechanical and electrical engineer.<sup>24</sup> Fred C. Baker, president of the Baker-Barkon Corporation, supplied light fixtures for both the State Capitol and the library. Baker's collaboration with the Barkon Corporation allowed access to the newest tube lighting and fluorescent tube lighting.<sup>25</sup>

Landscape architect George H. Otten, who worked for the State Highway Department, designed the landscaping for the State Capitol grounds and mall. The plan included a sunken garden in front of the Capitol and across from the library that was tentatively proposed to be a reflecting pond. The goal was to subordinate the surroundings to make the architecture of the Capitol dominate. The mall buildings, such as the library, were also to be subordinate to the Capitol building. Therefore, the library was placed toward the back of its lot, close to Winter Street.<sup>26</sup> Trees, to be selected later, were to be small enough to not block the view of the Capitol building. The plan for the library included lawn and boxwood hedges bordering walkways and an underground drainage system. River Bend Sand and Gravel contracted to plant the lawn and complete other landscaping around the library.<sup>27</sup> Two newspaper articles reported on funding to complete library landscaping. In July, the *Oregon Journal* reported that the WPA provided \$24,888 for the lawn, landscaping, and installation of a sprinkling system; the state committed \$16,917.<sup>28</sup> In August, the *Oregon Journal* reported that the Emergency Board considered asking the Board of Control to appropriate \$18,464 with an additional grant of \$17,000 from federal funds for landscaping and a sprinkler system for the library and two flagpoles for the Capitol.<sup>29</sup> It is unknown if these were separate grants or revised amounts for the same grants. Current planting around the State Library includes lawn and hedges bordering walkways as proposed in the original landscaping plan.

The newly constructed library was inspected on January 30, 1939. Construction had been completed in ten months. The building consisted of five floors, including the basement, and about forty rooms. Two floors were devoted to the library, the first and second floors. The Vocational Education Department was on the first floor, but other state offices were on the third and fourth floors, including the Superintendent of Public Instruction,

<sup>19</sup> "A Separate Library," *Oregonian*, May 6, 1937; "Two Buildings," *Oregonian*, July 9, 1937; Ralph Watson, "Cost to Fix Finish of New State Library," *Oregon Journal*, October 4, 1937.

<sup>20</sup> "State Library Deadline Set February 28," *Oregon Journal*, November 13, 1937.

<sup>21</sup> Advertisement for Bids," *Oregonian*, January 14, 1938; Capitol Board Opens Bids Friday, *Oregon Journal*, February 7, 1938;

"Architects' Drawing of New State Library Building," *Oregon Journal*, February 11, 1938, *Oregon Journal*, February 17, 1938.

<sup>22</sup> "Governor Breaks Ground for New State Building," *Oregonian*, February 25, 1938.

<sup>23</sup> C.W. Short and R. Stanley Brown. Public Buildings – A Survey of Architecture of Projects Constructed by Federal and Other Governmental Bodies between the Years 1933 and 1939 with the Assistance of the Public Works Administration, 1939, 139. And Notes on the history of Oregon State Library for PYM Libraries, June 3, 1992, in Robert Dortignacq file, 94-12, Oregon State Library.

<sup>24</sup> Historical Site Assessment: Oregon State Library Building. McMath-Dortignacq Architects, April 1998, 1.

<sup>25</sup> "Capitol Light Fixtures Made in Local Plant," *Oregon Journal*, June 26, 1938.

<sup>26</sup> Ernest W. Peterson, "Sunken Garden to Set Off New State Capitol" *Oregon Journal*, September, 1938.

<sup>27</sup> "Call for 'Mr. Mole,'" *Oregon Journal*, July 6, 1939.

<sup>28</sup> "Two State Projects Get Funds from WPA," *Oregon Journal*, July 16, 1939.

<sup>29</sup> "Capitol Landscaping Board Meeting Topic," *Oregon Journal*, August 16, 1939.

State Library of Oregon

Name of Property

Marion Co., OR

County and State

World War Veterans State Aid Commission, Vocational Education Department, Bureau of Labor, and part of the Highway Department.<sup>30</sup> The penthouse (or fourth floor) may have housed offices of the State Highway Division. The basement housed the library stock room, storage, staff rooms, conference space for 100 people, and the newspaper room. The first floor held the shipping room, mending room, the traveling library, and the model school library. The second floor accommodated records, the catalogue department, the print and map room, research department, business offices, government room, and a large reference room (26' x 95'). Book stacks were planned for all five floors. In addition to the stack space, the offices covered an area of 57,200 square feet.

The library served as a reference library for state officials, legislators and boards. In addition, its traveling libraries provided fifteen remote locations with education and entertainment. When the new library building opened, it was the only library available to 284,000 of Oregon's approximately one million residents.<sup>31</sup> The day after the inspection, staff began moving the library from its old quarters in the Supreme Court building where it had resided for twenty-five years.<sup>32</sup> The Trustees, Librarian, and Staff of the Oregon State Library held an open house for the new library on March 5, 1939.<sup>33</sup>

The WPA provided funds for furnishings for the State Library. Harriet C. Long wrote a letter to the architects, Whitehouse & Church, stating that in addition to drapes for the Reference Rooms and main offices, she would like to discuss the possibility of the WPA making furniture for the staff room, cot room, and the Reference Room.<sup>34</sup> WPA furnishings produced under other grants were loaned to the library, according to correspondence in the State Archives, and included one pair of henna curtains, eight chairs upholstered in beige and white, one myrtle wood conference table, four board portfolios, three mounted bird pictures, 24 lithographs in a denim-covered portfolio, one map of Oregon flowers by Charlotte Mish, three plywood library signs, and two packages of 25 each county library posters (to be shared with the county libraries). Ray Neuffer, supervisor of the WPA wood shop for furniture for Timberline Lodge built one or two bookmobiles for the library.<sup>35</sup>

The significance of the State Library as a public works project is in providing a needed building for public benefit and use. The PWA gave much needed employment to the architects, contractor, landscape architect, and others. The WPA enriched the library project by supplying artwork, furnishings, and landscaping and adding programs for extending the library's outreach.

#### Area of Significance for Education: the Library in the Community

*The State Library's Mission Embraces Education:* The State Library is significant under Criterion A for its mission of preserving books and promoting reading and education in the state. The current mission statement of the State Library is that it cultivates, preserves, and delivers library and information services to foster lifelong learning and community engagement. In the 1930s and 1940s, this mission was met by direct service. During the biennium ending on June 30, 1938, the library received 103,391 letters and loaned 450,118 volumes throughout the state in 99,239 shipments.<sup>36</sup> The library had a collection of 386,759 volumes that was made available to the people of Oregon, either through the public libraries or schools, or directly to individuals or communities where there were no public libraries.<sup>37</sup> From 1935 through 1943, the State Library administered

<sup>30</sup> Report of the State Capitol Reconstruction Commission, 1939.

<sup>31</sup> Ben Maxwell. "State Library Inspection Set: New \$885,000 Structure to House Ultimate Capacity of 650,000 Books," *Oregon Journal*, January 29, 1939.

<sup>32</sup> "Moving of State Library Begins," *Oregon Journal*, January 31, 1939.

<sup>33</sup> Invitation, Oregon State Archives, Record #89-35. Oregon State Library, Construction, 1935-1939, documents and photographs, Marion County.

<sup>34</sup> March 7, 1938, Oregon State Archives, Record #89-35. Oregon State Library, Construction, 1935-1939, documents and photographs, Marion County.

<sup>35</sup> Gladys Everett to Harriet Long, August 29, 1939, Oregon State Archives, Record #89-35. Oregon State Library, Construction, 1935-1939, documents and photographs, Marion County.

<sup>36</sup> Oregon State Library Biennial Report, 1936-1938, Oregon State Library.

<sup>37</sup> The Oregon State Library Building, excerpt from an article by Harriet C. Long in the *Library Journal*, June 1939, updated to 1955.

State Library of Oregon

Name of Property

Marion Co., OR

County and State

WPA projects to provide small local libraries with personnel to catalog and mend books. Through the 1940s, the library provided books to Oregon residents who lacked access to a comprehensive library.

The first of three parts of the outward-facing divisions is to offer assistance to local libraries. Currently, the library administers federal grants and state grants, such as Ready to Read; develops strategies and initiatives to assist libraries through workforce development programming and activities; and offers programming to library staff across Oregon. The public can use material in the reference room and through online research. The State Library became a Regional Federal Depository Library in 2007. Library Support and Development Services supports libraries of all kinds throughout the state and manages and distributes federal funds and grants.

A second part of the library's mission is to provide library services for the blind and vision impaired. In 1935, Alfred Acklom submitted a plea published in the newspaper lamenting the lack of books in Braille in the State Library.<sup>38</sup> A response published three days later suggested that the Library Association in Portland cover that service and it did for over 30 years.<sup>39</sup> Multnomah County Library in Portland provided this service under authorization of the Pratt-Smoot Act until 1969 when the state legislature appropriated \$80,000 that was combined with federal funding for the State Library to assume the service. In 1969, the Talking Book and Braille library moved from Portland to the State Library where it continues to be an important service offered by the State Library.<sup>40</sup> Among the specific goals for 2020-21 is to expand the title selection and reduce wait times for Talking Book and Braille Library users by implementing the Duplication On-Demand service model. The Talking Book and Braille services are currently among the library's most important tasks. Funded through federal, state, and donation sources, these services are available free of charge to any resident of Oregon who is impacted by a print disability, including a visual, physical, or reading impairment.<sup>41</sup> Reading material is provided free through the mail or download. The Talking Books library is the regional library for the Library of Congress National Library Service for the Blind and Print Disabled network.<sup>42</sup> The Talking Books and Braille Library that support print-disabled Oregonians are the second of three outward-facing divisions of the State Library.

A third part of the State Library mission is to provide information to state government, including agency staff and legislators. Government Services supports research needs of the legislature, all state agencies, and the public. It lends books and library services to government employees. The embedded librarian program provides each state agency with a librarian to support staff with specialized assistance and resources for collections, document delivery, web and electronic services and cataloging. The State Library is the only library in the state that serves all its residents directly and provides a resource to state legislators and administrators.<sup>43</sup> A fourth part of the library's mission is Operations, the internal support division that manages information technology, volunteers, finances, and general library support.<sup>44</sup>

Maintaining archives in the State Library has been formally separated from library functions. The Oregon State Archives opened in a portion of the third floor of the library in 1946. David Duniway became the first state archivist. The Archives became a separate organization in 1973 and moved to its own building in 1992. Nevertheless, the library still houses archival documents and photographs from significant periods in Oregon's history and is involved with digitization projects as part of the Documents Depository Program.

<sup>38</sup> "That the Blind May Read," *Oregon Journal*, February 8, 1935.

<sup>39</sup> *Oregon Journal*, February 11, 1935.

<sup>40</sup> Leonard Bacon. "Recent Move of Blind Library to Salem has Little Influence on Patrons," *Oregonian*, August 20, 1969.

<sup>41</sup> <https://www.oregon.gov/library/print-disabilities/pages/about-us.aspx>, accessed June 30, 2021.

<sup>42</sup> The role of the library in providing disability services is outside the scope of this nomination form but future research into the social history of the library might explore the impact of vision disabled services; services to rural, military, and other underserved communities; and the role played by women administrators.

<sup>43</sup> See the *OLA Quarterly*, Volume 26, Issue No. 2 (Summer 2020). This issue of the Oregon Library Association publication is devoted to current services and collections of the State Library of Oregon.

<sup>44</sup> Nancy Hoover, Acting State Librarian, email communication, December 14, 2021.

State Library of Oregon

Name of Property

Marion Co., OR

County and State

*The State Library was Created to Advise State Institutions on Education:* The Oregon Territorial Government adopted an act in 1848 providing for a library “to be kept at the seat of government.”<sup>45</sup> This library was called the State Library. Funds were provided for the library in 1852 and for the library to move to Salem where fire destroyed the library’s holdings in 1855. The library moved the State Capitol in 1874. The library collection was again destroyed, this time by water damage, in 1889 when a storm blew the roof off the Capitol Building.<sup>46</sup> The library continued to be known as the State Library but was primarily used by judges and lawyers.

The State Library of Oregon traces its beginnings to June 3, 1905 when the state legislature adopted HR6 that created the Oregon Library Commission to “give advice to all schools, free and other public libraries, and to all communities which may propose to establish them, as to the best means of establishing and maintaining such libraries, the selection of books, cataloging and other details of library management.” Jim Schepcke, State Librarian from 1991 through 2011, stated that the State Library is separate from the library created by the Territorial Government: “The origins of today’s State Library are not to be found in its nineteenth century namesake but in the Oregon Library Commission.”<sup>47</sup>

On June 3, 1913, the legislature passed a bill that created the Supreme Court Library under the direction of the Oregon Supreme Court and included the legal portions of the existing library. The bill also provided that the name of the Library Commission be changed to the Oregon State Library. All books of a non-legal nature were transferred to the new State Library. The name of the Oregon State Library was changed in 2017 to the State Library of Oregon. Quarters for the law library were provided on the second floor of the new Supreme Court Building in 1914. According to Rowe, the State Library was given space on the first floor of the Supreme Court Building; later the State Library was housed in the basement.<sup>48</sup> The State Library continued to be housed in the Supreme Court building until its own building was constructed in 1938-39. The mission of the new State Library differed from the mission of the library created under the Territorial Government. The 1913 law directed the library to advise schools, libraries, and communities on books.<sup>49</sup>

*The State Library was Integral to Preservation of a Democratic Government.* Libraries and their role in providing access to reading and books were considered integral to a democracy. The dedication of the State Library was held on April 3, 1939, at the beginning of a state-wide library conference and presided over by Governor Charles A. Sprague.<sup>50</sup> In the dedication address, Dr. Evelyn Steel Little, librarian at Mills College, then a women’s college in California, spoke about “The Power of Books in a Democracy.” Little argued that reading is the basis of a democratic government. She stated that the importance of reading in “the defense of our democracy today is simply this – that every citizen shall have access to all available printed material on any subject, to all sides of every question, without suppression or censorship, in order that he may judge the facts and opinions for himself.”<sup>51</sup> Libraries are critical to education and education is vital to citizenship in democratic governments.<sup>52</sup>

In her address at the dedication of the State Library, Little alluded to Gabriel Lavare’s carving of the pioneer mother reading to her child and also reaffirmed the historical importance of women in teaching children to read, and by extension, in educating future citizens in a democracy:

<sup>45</sup> Cathryn Bowie, State of Oregon Law Library,” Oregon Secretary of State, <https://sos.oregon.gov/blue-book/Pages/state/judicial/law-library.aspx>, accessed July 18, 2021.

<sup>46</sup> Administrative Overview, Oregon State Library, December 2003. See also Wilbur D. Rowe. “The Development of the Oregon State Library and its contributions to the public schools.” M Ed University of Oregon, 1939, 5.

<sup>47</sup> Jim Schepcke. “The Origins of the Oregon State Library,” Oregon Historical Quarterly, Volume 107, Number 1 (Spring 2006), 133.

<sup>48</sup> Randall B. Kester.

<sup>49</sup> Oregon was one of 21 states that created a Library Commission to develop public and school libraries between 1895 and 1910. Schepcke, 131.

<sup>50</sup> Dedication Program. Oregon State Archives, Record #89-35. Oregon State Library, Construction, 1935-1939, documents and photographs, Marion County.

<sup>51</sup> Evelyn Steel Little, “The Power of Books in a Democracy,” Address at the Dedication of the Oregon State Library, April 3, 1939. In the Oregon State Archives, 6.

<sup>52</sup> The State Library was not the only library that exhibited a strong connection to local government. When local libraries were first organized, they were often located in their local city hall. West Salem City Hall is one example.

State Library of Oregon

Name of Property

Marion Co., OR

County and State

In the hall of this building you have wisely set a memorial plaque to the pioneer mother, not only because her courage braved the material dangers of forest wilderness, where she bore and cared for her children with little help but the work of her own hands, but because she brought with her also from the east a heritage of culture, and this vision she determined to pass on to her children. Not many books could have come in those covered wagons and pack trains that followed after Lewis and Clark. Very often it was only one, but that one the pioneer mother had in her hand and in her heart, and with it she doubtless taught her children to read.<sup>53</sup>

*Role of Women in Developing the State Library:* As many communities developed, women assumed responsibility for developing subscription services for borrowing books and magazines and eventually for founding public libraries. The profession of librarian was a role traditionally filled by women, and it was logical that women's clubs and women librarians would be among the most outspoken voices calling for more libraries. The Multnomah County Library in Portland was organized by men as a private subscription library but local women's clubs became involved in lobbying for a public library.<sup>54</sup> The Portland Women's Club was instrumental in introducing legislation in 1899 to establish free tax-supported public libraries.<sup>55</sup> After the bill failed to receive a hearing, the Portland Women's Club met with 13 other women's clubs in the state to gain support for public libraries at the next legislative session and in 1901, a public library bill authorizing city libraries was passed. The efforts of the Library Committee of a newly organized Oregon Federation of Women's Clubs were instrumental in this accomplishment. By this time, Mary Frances Isom had become the director of the Portland Public Library; she then undertook a successful effort to expand the law to include county libraries, and in 1903, Multnomah County Library became one of four county libraries in the country.<sup>56</sup> Schepcke credits the efforts of Isom, Cornelia Marvin (who became the first State Librarian), and Women's Clubs in the state with having laid the groundwork for public libraries.<sup>57</sup>

In many, if not all PWA-funded Oregon libraries, women played a significant role in organizing and in serving as librarians. Bertha Hallam was the first librarian in the Weeks library at the University of Oregon medical school, and served from 1919 to 1965. Women comprised the leadership for the organization of the Deschutes County Library through the Ladies Library Club, organized on February 16, 1908.<sup>58</sup> The subscription service that preceded the library, the Bend Magazine Club by four years had been housed in Mrs. McIntosh's Millinery store. The City of Bend approved an annual budget to support a library in 1919. The following year Deschutes County contracted with the city to offer library services to the county and established the county library board that hired Lillian Sabin as the first professional librarian. A similar history was repeated in other Oregon counties among them Klamath County where the Bonanza Library developed from the local Women's Library.

The role of women at the State Library was characteristic of libraries throughout the state, but the scale of the State Library where services were offered to all state residents was broader and more significant. Women

---

<sup>53</sup> Ibid., 8.

<sup>54</sup> Cheryl Gunselman, "Library Association of Portland," *Oregon Encyclopedia*, In Portland, prominent men encouraged the establishment of the Library Association of Portland (LAP) and the founding of a subscription library accessible only to members. When the LAP joined with Oregon women's clubs in lobbying for a state law enabling incorporated cities to levy taxes to establish and support free libraries, the resulting law, passed in 1901, authorized cities to establish and maintain public libraries and to provide for their control and protection. In 1902, the city of Portland used public funds to turn the subscription library into a local public library. In order to address Portland's particular situation with the LAP, the law provided further that cities could enter contracts with existing private libraries to provide public library services, and the LAP continued to be part of the local library until it was dissolved in 1990. Cornelia Marvin was credited with encouraging growth in the number of libraries in the state during her tenure from 1905-28. She viewed her support of eugenics and "sterilization of the unfit" as an extension of her role as State Librarian, an effort to improve society. See Cheryl Gunselman, "Wheedling, Wangling, and Walloping" for progress: The Public Service Career of Cornelia Marvin Pierce (1905-1943), *Oregon Historical Quarterly*, Fall 2009, 110:3

<sup>55</sup> Schepcke, 136.

<sup>56</sup> Schepcke, 138.

<sup>57</sup> Schepcke, 139.

<sup>58</sup> Ladies met at Mrs. J. E. Sawhill's home where they decided to open a public library. Officers were elected: Mrs. C. D. Rowe, president; Mrs. F. F. Smith, vice-president; and Miss Coleman, secretary-treasurer. The women raised \$68.90 at a social the following Saturday. Mrs. E. D. Wilson was elected librarian.

State Library of Oregon  
Name of Property

Marion Co., OR  
County and State

continued to be instrumental in the State Library and filled the position of State Librarian from 1905 through 1983 as indicated in the table below:

Librarian	Years Served	Position
Cornelia Marvin	1905-28	State Librarian
Virginia C. Bacon	1929-29	State Librarian
Harriet C. Long	1930-41	State Librarian
Eleanor Stephens	1941-58	State Librarian
Eloise Ebert	1959-76	State Librarian
Mirpah Blair	1913-49	Assistant and Acting Librarian
Marcia Lowell	1977-83	State Librarian

Harriet C. Long, state librarian from 1930, was recognized for expanding the rural library service during her tenure. She was influential in fostering interest of local writers in one another and in developing a consciousness of "Northwestern Literature." She spent twenty-five years looking for funding to construct a separate library building. Long played a pivotal role in the State Library building and advised Whitehouse and Church on the layout of rooms, shelving, and office furnishings of the library.

In addition to librarians at the State Library, women were integral to the WPA project that provided some furnishings. Marjory Hoffman Smith, Assistant Director of the State Art Project, advised Long on furnishings. WPA workers also assisted in library cataloging. In addition, in 1934 the library participated in directing Civil Works Administration (CWA) funded workers for libraries.<sup>59</sup> Both men and women were employed under the CWA (a distinction from the Civilian Conservation Corps). A February 15, 1934, list of work underway identified twenty-one county or local public libraries. Twenty-four libraries had applications filed but not yet in action, according to another list of the same date.<sup>60</sup> When first established, CWA funds were required to be used for planning and execution of construction projects. In order to expand the kinds of employment opportunities, a Civil Works Service (CWS) was created for white collar and professional workers. Some work projects were filled with collaboration between the CWS and the Women's Division, both funded through the Federal Emergency Relief Administration (FERA). These jobs included library work in addition to nursing, education, social work, public health, child care, and collection of statistical data. Later applications were filed for similar work to be done by WPA workers.<sup>61</sup> The WPA funded a state-wide project allocating \$254,243 for the State Library to provide free reading rooms, to catalog and index books, and to complete general library activities.<sup>62</sup> An allotment of \$357,000 was granted in October for organization of an extended library system in normal schools and public schools throughout the state.<sup>63</sup>

Oregon's experience paralleled the WPA programs to expand library programs in other states across the country. According to Martha H. Swain, the reduction of library services caused by the onset of the Depression was reversed by the Library Services Section of the Women's Division of FERA. Through the WPA, employment in library projects reached 38,324 in November 1938, 25,628 working in library services, and 12,696 in book repair.<sup>64</sup> Over the decade of the WPA, libraries saw a great increase in library assistants and attendants. Whereas in 1930, there were 1,486, there were 16,668 in 1940.<sup>65</sup>

<sup>59</sup> CWA work is outside the period of significance for this nomination form. It lasted from November 1933 through March 1934.

<sup>60</sup> Oregon State Archives, Record #89-35. Oregon State Library, Construction, 1935-1939, documents and photographs, Marion County.

<sup>61</sup> Ibid.

<sup>62</sup> "\$101,482 Allotted for Larch Road: Other Projects eligible for WPA Funds Announced," *Oregonian*, May 12, 1938.

<sup>63</sup> "Old Oregon, Library Plan Allotted Funds," *Oregon Journal*, October 25, 1938.

<sup>64</sup> Martha H. Swain. "A New Deal in Libraries: Federal Relief Work and Library Service, 1933-1943," *Libraries & Culture*, Volume 30, Number 3, (Summer, 1995), 270.

<sup>65</sup> Swain, 278.

State Library of Oregon

Name of Property

Marion Co., OR

County and State

Few African American, indigenous people, or other marginalized groups were able to obtain employment under the WPA program.<sup>66</sup> Further research may reveal whether any effort was made to be sure that access was provided for all races. In 1930s Oregon, the barrier to library access was considered to be the rural character of the state. The building was designed so that much of the first floor was dedicated to mail services to provide reading materials to rural communities and schools and isolated farms. On July 4, 1941, Long died, only two years after the State Library building was dedicated.<sup>67</sup> The mission of providing a statewide service preceded Long and was continued by subsequent librarians who were all women, until 1983.

## **CRITERION C**

### **Area of Significance: Architecture**

The Capitol mall includes a group of buildings that are similar in their purpose of conducting the business of governing and administration of the state and are also related in architecture. The Capitol and library buildings were designed by the same architectural team at about the same time and were planned to complement one another. The Capitol building was intentionally designed to be the prominent feature and other government buildings along the mall were to appear to be supporting the Capitol.

The architectural firm of Whitehouse & Church designed the library building. Whitehouse & Church were also Oregon Associate Architects on the Capitol project, working with the New York firm, Trowbridge & Livingston in association with Francis Keally. Whitehouse & Church architect Earl P. Newberry was the resident representative for both the Capitol and library buildings. The State Capitol and State Library are identified as the major projects of the Whitehouse & Church firm during the Depression. Both the State Capitol and the State Library were planned, designed, and built during the same five-year period: 1935-39. The Modernist and Stripped Classical architecture characteristics seen in the library are also features of the Capitol. Although simpler than the monumental Capitol building, the library is similar in shape, style, and materials to the Capitol. The Modernist and Stripped Classical architecture characteristics seen in the library are also features of the Capitol. The library was built through public funding and was the second building constructed on the new Capitol Mall that was developed during construction of the Capitol building. Although the Public Service Building and the Department of Transportation were constructed later, the National Register nomination form for the State Capitol states that the Public Service building, the Department of Transportation, and the State Library were all designed to be stylistically similar to the State Capitol.<sup>68</sup>

Both buildings share areas of significance: architecture (Modernist and Stripped Classicism), art, and education. Design characteristics of Modernist architecture that are common to the State Library and State Capitol include use of geometric forms, an emphasis on horizontal lines, flat roofs, white color; similar construction materials, such as reinforced concrete, white Georgia marble wall cladding (the marble used on the Capitol came from Vermont), granite base, bronze windows, bronze trim on exterior, rose tan Montana Travertine on walls (the same as that used in the Capitol), terrazzo flooring, plaster walls and ceilings and interior oak woodwork. Both buildings feature art deco details. The geometric bronze balcony railings, bronze medallions on windows, carved pinecone and needle design in the balcony platform, and streamlined design of the library are features similar to State Capitol decorations, including the bas relief of an eagle with outstretched wings over the main door, the sheaves of wheat over the south door, and the punched windows of the library that resemble indentations in the Capitol dome.

<sup>66</sup> Philip Harvey, "The New Deal's Direct Job Creation Strategy: Providing Employment Assurance for American Workers," in *When Government Helped: Learning from the Successes and Failures of the New Deal*, eds. Sheila D Collins and Gertrude S. Goldberg, New York: Oxford University Press, 2013.

<sup>67</sup> "Librarian for State Succumbs," *Oregon Journal*, July 5, 1941; "Harriet Long Built Her Own Monument," *Oregon Journal*, July 7, 1941.

<sup>68</sup> Elisabeth Walton Potter and James M. Hamrick. National Register of Historic Places Registration Form for the Oregon State Capitol, April 12, 1988, listed June 29, 1988, 3.

State Library of Oregon

Name of Property

Marion Co., OR

County and State

Stripped classicism is characterized by the structural and proportional systems of classical architecture but from which details have been omitted.<sup>69</sup> It was prevalent in the 1930s in public buildings. Features of the State Library and the State Capitol that exhibit Stripped Classicism include the simplified narrow marble block architrave surrounding the windows in place of substantial window moldings, the bronze framed windows proportioned to balance the walls, and the convex fluting on the pediment of the pioneer on the Capitol dome that is similar to the bronze roof over the west door of the library.

The location and setting of the State Library are original and still ideal for the building. A 1998 Historical Assessment prioritized areas of the State Library according to the aspects of integrity. The assessment found areas of highest integrity were those “exhibiting unique or distinctive qualities, original materials or elements; or representing examples of skilled craftsmanship.”<sup>70</sup> The exterior of the library building on all sides, the penthouse exteriors, the original entry steps on the east side, and the loading dock and canopy on the west side reflect outstanding qualities of design, materials, workmanship, and association and are contributing features of the exterior. Non-historic features of the exterior that do not reflect the building’s architectural significance include the loading dock on the north side and access ramps on the east and west sides.

Interior spaces that reflect a similarly high level of integrity in terms of design, materials, workmanship, and association include the entry vestibules, foyer, main lobby, elevator lobby, stair lobby, south corridor, and elevator cab on the first floor; and the library lobby, public catalog room (research room), elevator lobby, stair lobby, north and south corridors, reference rooms, government room (genealogy room), and the librarian’s office on the second floor. These spaces contribute to the character of the interior.

Areas with less integrity do not retain or are less rich in finish original materials and detailing. These spaces include the main stairway to the basement; the first and third floors; public restrooms at the same floors; the main corridors in the basement and third floor, and the original conference room in the basement. Spaces that have been more heavily modified include the typical offices spaces on the first and second floors and the south hall at the first floor.

Other areas that do not have a high level of integrity on the interior include closed book stacks; all of the basement except the stairs, the corridor and original Conference Room; all of the third floor except the corridor, stairs, public restrooms and upper reference room; and all of the penthouse and the original vocational education room on the first floor which has been remodeled as a computer room. Significant historic fixtures in these areas include some original bronze hardware, bronze and painted metal pendant light fixtures at the basement, and original stack and shipping elevators.<sup>71</sup> The integrity of all of the exterior and significant areas of the interior, including public areas and areas used for library operations, show that the State Library’s architecture is significant under Criterion C.

### Architects – Whitehouse & Church

Morris Whitehouse was born in Portland in 1878 and founded an architectural firm that, through successors, survived for eighty years, the longest of any architectural firm in Oregon.<sup>72</sup> Whitehouse graduated from the Massachusetts Institute of Technology (MIT) in 1905 and was awarded the first Guy Lowell Travelling Fellowship which enabled him to study at the American Academy in Rome for a year. At its end, he returned to Portland where he had grown up and opened an office in 1908 with Bruce Honeyman, an engineer. The following year he entered into a partnership with Edgar M. Lazarus and Jacques André Fouilhoux. A year later Lazarus left the firm. Whitehouse & Fouilhoux continued together as a firm until 1919, although Fouilhoux took an absence from the office to serve in the U.S. Army in France from 1917 to 1919. When Fouilhoux subsequently moved to New York, Whitehouse practiced alone. Whitehouse & Associates was organized in

<sup>69</sup> James Stevens Curl. *Oxford Dictionary of Architecture and Landscape Architecture*, 2<sup>nd</sup> ed. Oxford University Press, 2006, 748.

<sup>70</sup> McMath and Dortignacq, 7-19.

<sup>71</sup> Ibid.

<sup>72</sup> Richard Ellison Ritz. *Architects of Oregon: A Biographical Dictionary of Architects Deceased – 19<sup>th</sup> and 20<sup>th</sup> Centuries*, Portland: Lair Hill Publishing, 2002, 421.

State Library of Oregon

Name of Property

Marion Co., OR

County and State

1926 with Glenn Stanton and Walter Church and continued to 1932 when Stanton and Church were made partners. Stanton left the firm in 1935. The firm continued as Whitehouse & Church through 1941. In 1942 Earl P. Newberry and Frank G. Roehr were added as partners. Whitehouse died in 1944. The firm continued for forty-one years after his death.

Walter Enos Church was born in Boston in 1893 and moved to Portland in 1905. He attended the University of Oregon and earned a degree as a Bachelor of Architecture in 1917. He served as a gunner in Field Artillery during World War I. He then earned a master's degree in architecture at MIT in 1921. He lived in San Francisco for several years before moving back to Portland. He was associated with Whitehouse from 1927 when he started as a draftsman and continued with the firm until 1960 when he retired.

During the 1930s, Whitehouse & Church also designed the Deschutes County Library and the Portland Courthouse, now called the Gus J. Solomon Courthouse, with Jules Henri de Sibour (consulting) and James A. Wetmore (Supervising Architect of the Treasury). However, the association with Trowbridge & Livingston and Francis Keally on the State Capitol and the design of the State Library of Oregon were the most significant projects for Whitehouse & Church during the Depression. The library building was the second of the buildings planned for the State Capitol Mall and the first on the north four-block area of the mall. Continuing clockwise from the Capitol is the State Library and then the Department of Consumer and Business Services to the northwest, designed by Skidmore, Owings & Merrill in 1958, and built in 1961. On the east side of the mall is the Department of Education on the north, designed by Whitehouse & Church, built in 1949-50, and then the Department of Transportation south of the education building (northeast of the Capitol building), designed by Whitehouse, Church, Newberry & Roehr, and built in 1951. The architectural significance of the State Library is due in part to its design by Whitehouse & Church.

#### Works of Art by Artist Gabriel Lavare

Exterior and interior artwork in the library building, including bas-relief in marble and wood, stenciling, lettering and cast metal was the work of Gabriel Lavare. Gabriel Lavare was a California artist. He was born near Carmel in 1901 and died in San Francisco in 1966. When he was five, he moved to Egypt with his father who was an archaeologist. He studied art in South Kensington and Cambridge in England; Art Students League, Pratt Institute, and Beaux Arts in New York; and California School of Arts and Crafts in California.<sup>73</sup> Between about 1931 and 1941, Lavare lived in Oregon and was commissioned to create wood and marble sculptures for private and public spaces. Two of his best known carvings are *Lion* and *Lioness* carved on thin marble panels and mounted on the Lewis and Clark memorial at Washington Park in Portland.<sup>74</sup> Lavare's explanation of his work on the lions also applies to the marble bas-relief work at the State Library.

I desired to obtain the utmost in surface decoration in the most restricted manner of carving. The style of carving was the natural outcome of working in a large, but thin, area of marble. The brittleness of the marble did not allow a depth of carving deeper than three-eighths of an inch.

Therefore, the masses had to be arranged accordingly and every muscle which was unnecessary eliminated. Only the fewest muscles possible are depicted, and these only in order to define more distinctly the major masses.<sup>75</sup>

The focus on simplification and flatness of the design produced the art deco characteristics of the carving in the Washington Park panels and of the carvings produced for the State Library. In addition to the lettering, seals, and pinecone and needle cast-plaster on the exterior of the building, Lavare created carving for the interior. Just inside the entrance is the pioneer mother reading to her child who stands before her. Carved in Keota Fleuri marble the figures are flattened and simplified to their elemental forms, much like the lions at

<sup>73</sup> Catherine Jones. "Portlander Receives Award for Architectural Sculpture," *Oregonian*, January 24, 1937.

<sup>74</sup> Catherine Jones. "Work of Portland Artist Now in Washington Park," *Oregonian*, December 2, 1934.

<sup>75</sup> *Ibid.*

State Library of Oregon

Name of Property

Marion Co., OR

County and State

Washington Park.<sup>76</sup> The carving is symbolic of knowledge and learning, handed from one generation to the next.<sup>77</sup> Lavare also made three wood carvings for the reference room: a Western Meadowlark, the state bird; Oregon grape, the state flower; and the mission press. Lavare carved the lettering over rooms in the interior and the pinecone and needles design on the plaster cornice above the pioneer mother plaque. The bronze grilles for the doors to the reference room, were decorated with dogwood blossoms, and medallions representing the Columbia and Washington medal, the Hudson's Bay company seal, the provisional government seal, the beaver coin of early pioneer days, the territorial government seal, and the state seal. The librarian suggested using these seals for decoration to Whitehouse and Church in a letter, December 20, 1937, in the State Archives. In the reference room are stenciled designs of printer's marks of early printers, including Fust and Schoeffer of Germany, William Caxton of England, Henry Van Der Keere of The Netherlands (which includes a cast bronze clock), Aldus of Italy, and Estienne of France.<sup>78</sup>

Among Lavare's other carvings produced for public spaces in Portland during the 1930s are a marble war memorial at the entrance to the federal building, including a figural representation of Peace; a marble statue of Magellan that was put on exhibit at the Portland Art Museum in February 1937 with other pieces produced under the WPA; and four panels celebrating four major northwest industries (Lumbering, Agriculture, Fishing, and Shipping) carved in pine for the lounge of the United Airlines administration building at the Portland airport in 1941.<sup>79</sup> Lavare was given an award by the Oregon Chapter of the American Institute of Architecture for his outstanding work as a designer and craftsman.<sup>80</sup>

Gabriel Lavare produced art for the library that was commissioned by the architects or through the WPA, including the lettering and relief of a pioneer woman reading to a child, wood carvings in white oak in the reference room (such as the Western Meadowlark, Photo 14), stenciled marks of early printers, and medallions carved on the exterior of the building.<sup>81</sup> Lavare's work in the library is high quality in design and workmanship, contributing to the State Library's architectural significance. The State Library has more ornamentation and decorations symbolic of reading, learning, and printing. Contemporary New Deal artists were employed for artwork in both buildings. Gabriel Lavare was a well-known artist in Portland who was commissioned to produce sculptural works for parks and public buildings under the WPA before he was retained for sculptural works for the State Library. The bas reliefs of the Lewis and Clark expedition, the Oregon Trail pioneers, and the Oregon Seal over the Capitol front door by Ulrec Ellerhusen are similar in style, material, and technique to the relief of the pioneer mother reading to her child in the interior (Photo 16) and the three symbols of wisdom, knowledge, and learning over the front doors of the library that were carved by Gabriel Lavare in pink Kasota Fleuri marble.

Pioneer mother images are the subject of recent re-interpretation because they suggest the traditional values of "American exceptionalism, race relations, and gender identity."<sup>82</sup> According to Cynthia Culver Prescott, the assumption behind the pioneer mother monuments is of cultural superiority and the gender role of the mother. The sculpture is included in a blog of pioneer monuments and an analysis of monuments to pioneer mothers.<sup>83</sup>

<sup>76</sup> McMath and Dortignacq, 11.

<sup>77</sup> Paul Donald. "Oregon's New State Library," *Oregon Journal*, April 2, 1939.

<sup>78</sup> Ibid.; Ethel Romig Fuller, "The State Library Hits Its Stride: New Facilities Bringing Pleasure and Public to Thousands of Citizens Throughout Oregon," *Oregonian*, January 14, 1940.

<sup>79</sup> "Peace," *Oregonian*, October 27, 1935; "Artists' Plans for Timberline Lodge Shown," *Oregonian*, February 14, 1937; Catherine Jones. "Wood Sculptures at Airport," *Oregonian*, July 27, 1941.

<sup>80</sup> Jones, January 24, 1937.

<sup>81</sup> Lavare's work at the State Library of Oregon has been identified in Links to On-Line Exhibits of New Deal Art, accessed June 28, 2021. His public commissions are mentioned in Oregon: The End of the Trail, American Guide Series (Portland: Binfords & Mort, 1940), 131 and 232; John Piper's "The Attainments in Arts, Literature," *Oregonian*, February 16, 1938 and Margaret Bullock's New Deal Art in the Northwest: The WPA and Beyond. Tacoma: Tacoma Art Museum, 2021, 127.

<sup>82</sup> Cynthia Culver Prescott. *Pioneer Mother Monuments: Constructing Cultural Memory*. Norman: University of Oklahoma Press, 2019. Prescott's analyzes about 200 monuments, dividing them into periods: the late 19<sup>th</sup> century, the 1930s, and more recent monuments of the late 20<sup>th</sup> century.

<sup>83</sup> Ibid. See also: [https://pioneermonuments.net/search-monuments/?Artist=Gabriel%20Lavare&Sculpture=\(Pioneer%20woman%20reading%20to%20child\)&Date=circa%201939&search=fals&City=Salem%2C%20OR](https://pioneermonuments.net/search-monuments/?Artist=Gabriel%20Lavare&Sculpture=(Pioneer%20woman%20reading%20to%20child)&Date=circa%201939&search=fals&City=Salem%2C%20OR), accessed February 11, 2022.

State Library of Oregon

Name of Property

Marion Co., OR

County and State

Prescott concluded that examination of pioneer monuments similar to Lavare's sculpture shows that at the time the artwork was completed, the general public expected public monuments to reflect traditional values of western womanhood.<sup>84</sup> In addition, Prescott argued, although the iconography of these monuments varied over time from 1880 to the present, the general population was "invested in establishing the whiteness of the men and women who settled supposedly empty virgin lands. They believed that those white settlers carried the blessings of Euro-American civilization to untamed lands and savage indigenous peoples who were destined to disappear."<sup>85</sup> Prescott's study provides an opportunity to consider a revised interpretation of the iconography in the sculpture in a larger context that is more accurate and culturally inclusive.

### State Library of Oregon Compared to Other New Deal Libraries in Oregon and Nationally

Other libraries in the state funded through the PWA or the WPA were generally smaller than the State Library and served very specific communities although all were designed by prominent Oregon architects. PWA funding for Oregon libraries allowed for design by a local architect, such as the extensive 1937 University of Oregon Library designed in a Beaux Arts style by Ellis F. Lawrence. The focus was on the University of Oregon community. For a second PWA-funded design, Lawrence chose a Modernist and Stripped Classical style with art deco details. This library, the John E. Weeks Memorial Library (1938) at what is now the Oregon Health Sciences University, was focused on the medical school community.<sup>86</sup> The northernmost wing of the Northrup Library at Linfield College (1936) that was designed by Walter Crowell, an architect in A.E. Doyle's office, is in a Georgian style and a much smaller and simpler structure than the State Library. The Deschutes County Library (1938), funded by a small PWA grant (\$13,500), was designed by Whitehouse & Church, the State Library architects, although on a much smaller scale than the State Library and in an Arts and Crafts style, not the Moderne style of the State Library. The State Library is unique in its style and scale in Oregon.

The Living New Deal site lists about 230 libraries built, improved, or expanded through the PWA, WPA, CWA, or other New Deal programs.<sup>87</sup> One other state library on the list is Wyoming's State Supreme Court and Library in Cheyenne. This rectangular, three story building, is similar in style to the State Library of Oregon. The Wyoming building is part of a plan for a landscaped square with the Wyoming State Capitol Building, like the State Library of Oregon's relationship with the State Capitol. The Wyoming library shares space with the Wyoming Supreme Court courtroom, judicial and administrative offices, and a law library. It appears to be a larger structure than the State Library of Oregon. The top panel of the entry to the Cheyenne building identifies the functions of the structure, only one of which is serving as the state library. In Oregon, the primary function of the building was to serve as a State Library, and embellishments on the exterior emphasize that purpose.

Visually, the Concord Library in Concord, New Hampshire is very similar to the State Library of Oregon. Adjacent to Concord City Hall and part of the Civic Square development, it was funded by the PWA, built in 1938 and occupied in January 1940. Like the State Library of Oregon, the Concord Library is stripped classical in style, has a smooth stone exterior, the walls are punctuated on each side by three sets of vertical windows. The Concord Library may be smaller and does not have exterior sculpted ornamentation that enhances the State Library of Oregon. Although the use of the library is for the local community, at the time the Concord Library was built, it provided services through branch libraries to outlying rural areas.<sup>88</sup>

Two federal libraries constructed under New Deal funding are the Library of Congress Adams Building that was designed by Alexander Buel Trowbridge (Trowbridge & Livingston also designed the Oregon State Capitol) and the completion and expansion of the National Archives Building in Washington DC. Both federal buildings are

---

<sup>84</sup> Prescott, 78.

<sup>85</sup> Ibid., 291.

<sup>86</sup> Stylistically similar, the Weeks Library brings to mind the state library in the shape, window configuration, terrazzo floor, light fixtures (also by Fred Baker), and bronze decorations on front door and windows; the use of brick and terra cotta in the Weeks library differs from the state library.

<sup>87</sup> <https://livingnewdeal.org/new-deal-categories/education-health/libraries/>, accessed December 29, 2021.

<sup>88</sup> Virginia Babezak, "Celebrating 150 Years of Service: Concord Public Library (1855-2005)," Concord, New Hampshire, January 2006, 21-22.

State Library of Oregon  
Name of Property

Marion Co., OR  
County and State

substantially larger than the State Library of Oregon but similar in style. The State Library of Oregon is unique among libraries funded through New Deal programs, both in the state and nationally, in its purpose of serving as a state library.

The State Library's style, architectural and artistic excellence, government funding through New Deal programs, and statewide service to education confirm its significance in the state as a New Deal building and demonstrate that it meets the requirements to be listed in the National Register for Historic Places under Criterion A and Criterion C of the Oregon New Deal Resources from the PWA or WPA, 1933-1943 Multiple Property Document.

State Library of Oregon

Name of Property

Marion Co., OR

County and State

---

## 9. Major Bibliographical References

---

**Bibliography** (Cite the books, articles, and other sources used in preparing this form.)

Administrative Overview. Oregon State Library, December 2003

Babezak, Virginia, "Celebrating 150 Years of Service: Concord Public Library (1855-2005)," Concord, New Hampshire, January 2006

Bullock, Margaret. *New Deal Art in the Northwest: The WPA and Beyond*. Tacoma: Tacoma Art Museum, 2021

Curl, James Stevens. *Oxford Dictionary of Architecture and Landscape Architecture*, 2<sup>nd</sup> ed. Oxford: Oxford University Press, 2006

Ebert, Eloise. Correspondence from Librarian to proposed contractors, July 24, 1962

Emerson, Kim. National Register of Historic Places Registration Form for the University of Oregon Library and Memorial Quadrangle, August 15, 1989

Hegeman, Dave. Email correspondence, November 6, 2020, December 4, 2020, and December 8, 2020

Himes, George. The History of the Press of Oregon: 1839-1850, *Oregon Historical Quarterly*, Volume 3, Number 4 (December 1902), 327-70

Jones, Frank Ives. PWA Photographs of State Library Construction 1937-1938. Oregon Historical Society, Org Lot 1011, Item ID 042280

Kester, Randall B. "Capitol Folklore," *Oregon State Bar Bulletin*, August/September 2002

Kester, Randall B. Oregon Legal Heritage: Ex Libris. *Oregon State Bar Bulletin*, June 2003

Long, Harriet C. Letter to Whitehouse and Church, Oregon State Archive, August 8, 1938

Maxwell, Ben. Photograph of State Library Building, Oregon Historical Society. Item ID 018136

McMath, George and Robert Dortignacq. Historical Site Assessment: Oregon State Library Building. McMath-Dortignacq Architects, April 1998

Notes on the history of Oregon State Library for PYM Libraries, 6-3-92, in Dortignacq file, 94-12, Oregon State Library

Oregon Historical Society. Vertical File on Oregon State Library and State Archive, Item ID 044600

*Oregon Journal*, selected articles between April 26, 1935 and July 7, 1941

*OLA Quarterly*, Volume 26, Number 2, Summer 2020

Oregon State Library, Administrative Overview, December 2003

Oregon State Library Biennial Report, 1936-1938, Oregon State Library

The Oregon State Library Building, Oregon State Library, 1955

State Library of Oregon  
Name of Property

Marion Co., OR  
County and State

Oregon State Library Scope and Content Note, Oregon State Archives, Record #89-35. Oregon State Library, Construction, 1935-1939, documents and photographs, Marion County, n.d.

Oregon State Capitol State Park Walking Tour, n.d.

*Oregon: End of the Trail*. Portland: Binfords & Mort, 1940, Rev. 1951

*Oregonian*, selected articles between December 2, 1934 and August 20, 1969

Patterson, Jennifer L. Email correspondence November 9, 2020, November 13, 2020, November 17, 2020, November 19, 2020, November 20, 2020

Potter, Elisabeth. Memo to file regarding the Oregon State Library Building Renovation Project, in Notes on the history of Oregon State Library for PYM Libraries, 6-3-92, in Dortignacq file, 94-12, Oregon State Library, August 27, 1997,

Potter, Elisabeth Walton and James M. Hamrick. National Register of Historic Places Registration Form for the Oregon State Capitol, April 12, 1988, listed June 29, 1988

Prescott, Cynthia Culver. *Pioneer Mother Monuments: Constructing Cultural Memory*. Norman: University of Oklahoma Press, 2019

Ritz, Richard Ellison. *Architects of Oregon: A Biographical Dictionary of Architects Deceased – 19<sup>th</sup> and 20<sup>th</sup> Centuries*. Portland: Lair Hill Publishing, 2002

Rowe, Wilbur D. The Development of the Oregon State Library and its contributions to the public schools. M Ed Thesis, University of Oregon, 1939

Schepke, Jim. "The Origins of the Oregon State Library," *Oregon Historical Quarterly*, Volume 107, Number 1 (Spring 2006)

Short, C. W. and R. Stanley Brown. *Public Buildings – A Survey of Architecture of Projects Constructed by Federal and Other Governmental Bodies between the Years 1933 and 1939 with the Assistance of the Public Works Administration*, 1939

Swain, Martha H. "A New Deal in Libraries: Federal Relief Work and Library Service, 1933-1943," *Libraries & Culture*, Volume 30, Number 3 (Summer, 1995), 265-83

Whitehouse, Morris H. Architectural Photographs Collection, Photographs of State Library. Oregon Historical Society, Org Lot 321, Item ID 031504, including neg. 015555, OrHi92803, OrHi92802, and 5/10

**Previous documentation on file (NPS):**

- preliminary determination of individual listing (36 CFR 67 has been requested)
- previously listed in the National Register
- previously determined eligible by the National Register
- designated a National Historic Landmark
- recorded by Historic American Buildings Survey # \_\_\_\_\_
- recorded by Historic American Engineering Record # \_\_\_\_\_
- recorded by Historic American Landscape Survey # \_\_\_\_\_

**Primary location of additional data:**

- State Historic Preservation Office
- Other State agency
- Federal agency
- Local government
- University
- Other
- Name of repository: \_\_\_\_\_

State Library of Oregon  
Name of Property

Marion Co., OR  
County and State

**10. Geographical Data**

**Acreage of Property** 1.71

(Do not include previously listed resource acreage; enter "Less than one" if the acreage is .99 or less)

**Latitude/Longitude Coordinates**

Datum if other than WGS84: N/A

(enter coordinates to 6 decimal places)

1 44.939893° -123.030964°  
Latitude Longitude

3 \_\_\_\_\_  
Latitude Longitude

2 \_\_\_\_\_  
Latitude Longitude

4 \_\_\_\_\_  
Latitude Longitude

**Verbal Boundary Description** (Describe the boundaries of the property.)

The property is Block 83 in the City of Salem and comprised of lots 6-10, FR 1-5, and a vacated alley, Marion County Tax Map 07 3W 27AA. It is bounded on the south by Court Street NE, on the west by Winter Street NE, on the north by vacated Chemeketa Street NE, and the east by vacated Summer Street NE and the Capitol Mall.

**Boundary Justification** (Explain why the boundaries were selected.)

The tax lot reflects the historic boundary of the property since the building's construction in 1939.

**11. Form Prepared By**

name/title Sarah Baker Munro date March 13, 2021  
organization \_\_\_\_\_ telephone 503-806-7286  
street & number 7740 SW Brentwood Street email sarahmunro@comcast.net  
city or town Portland state OR zip code 97225

**Additional Documentation**

Submit the following items with the completed form:

- **Regional Location Map**
- **Local Location Map**
- **Tax Lot Map**
- **Site Plan**
- **Floor Plans (As Applicable)**
- **Photo Location Map** (Include for historic districts and properties having large acreage or numerous resources. Key all photographs to this map and insert immediately after the photo log and before the list of figures).

State Library of Oregon  
Name of Property

Marion Co., OR  
County and State

**Photographs:**

Submit clear and descriptive photographs. The size of each image must be 3000x2000 pixels, at 300 ppi (pixels per inch) or larger. Key all photographs to the sketch map. Each photograph must be numbered and that number must correspond to the photograph number on the photo log. For simplicity, the name of the photographer, photo date, etc. may be listed once on the photograph log and doesn't need to be labeled on every photograph.

**Photo Log**

**Name of Property:** State Library of Oregon  
**City or Vicinity:** Salem  
**County:** Marion **State:** OR  
**Photographer:** Robert Olguin (Photos 1-3 and 7-9) Sarah Munro (Photos 4-6); Jennifer Patterson (Photos 10-15); Dave B. Hegeman (Photo 16)  
**Date Photographed:** November 19, 2020; November 27, 2020; December 14, 2021; January 19, 2022

Description of Photograph(s) and number, include description of view indicating direction of camera:

- Photo 1 of 16:** OR\_MarionCounty\_StateLibrary\_0001  
State Library building and setting, facing west
- Photo 2 of 16:** OR\_MarionCounty\_StateLibrary\_0002  
State Library building, facing southwest
- Photo 3 of 16:** OR\_MarionCounty\_StateLibrary\_0003  
State Library building, facing northwest
- Photo 4 of 16:** OR\_MarionCounty\_StateLibrary\_0004  
Seal at center top of east side of State Library building shows mission printing press, facing west
- Photo 5 of 16:** OR\_MarionCounty\_StateLibrary\_0005  
Balcony, pine cone and needle decoration on base of balcony, geometric rectangular and diagonal designs of balcony rail and carving of open book and tree of State Library building, facing west
- Photo 6 of 16:** OR\_MarionCounty\_StateLibrary\_0006  
State Library east side, carved seal at top of building between "State" and "Library;" canted or octagonal transom windows and bronze stars in panels between windows, facing west
- Photo 7 of 16:** OR\_MarionCounty\_StateLibrary\_0007  
State Library north side, loading dock on west corner result of alteration, landscaping includes several trees identified on the State Capitol State Park walking tour: Dove Tree (Davida involucrata) and Northern Red Oak (Quercus rubra), facing south
- Photo 8 of 16:** OR\_MarionCounty\_StateLibrary\_0008  
West side of building showing altered door and canopy with public entrance from Winter Street, facing east
- Photo 9 of 16:** OR\_MarionCounty\_StateLibrary\_0009  
State Library south side, landscaping is lawn, rhododendrons and trimmed hedges, facing north

State Library of Oregon  
Name of Property

Marion Co., OR  
County and State

- Photo 10 of 16:** OR\_MarionCounty\_StateLibrary\_0010  
First floor lobby toward foyer, three double doors, vestibule and second set of double doors, showing original hanging light fixtures, pinecone and needle frieze, marble panel walls, and terrazzo floor in star design, looking northeast
- Photo 11 of 16:** OR\_MarionCounty\_StateLibrary\_0011  
First floor lobby toward marble carved Pioneer Mother Reading to her Child (Gabriel Lavare), looking southwest
- Photo 12 of 16:** OR\_MarionCounty\_StateLibrary\_0012  
Second floor hall, facing Elevator and Map & Print Room (names carved above entry), three octagonal bronze grilles at each side of entry to Map & Print Room (originally on doors), facing northeast
- Photo 13 of 16:** OR\_MarionCounty\_StateLibrary\_0013  
Reference Room of room empty two-story reference room, six bronze pendant light fixtures, octagonal panels and diamond design in coffered ceiling, three wood medallions carved with Oregon printing press (first on west coast), state bird (meadowlark), and state flower (Oregon Grape), facing east
- Photo 14 of 16:** OR\_MarionCounty\_StateLibrary\_0014  
Meadowlark (state bird) carved in wood panel in Reference Room, one of three panels illustrating state symbols, facing south
- Photo 15 of 16:** OR\_MarionCounty\_StateLibrary\_0015  
Librarian's office, paneled in knotty Ponderosa Pine (from Ochoco Forest in Central Oregon), floor to ceiling, wood table divided for leaves, six spindle-back chairs, on east side of building over front entrance and balconies, facing southeast
- Photo 16 of 16:** OR\_MarionCounty\_StateLibrary\_0016  
Pioneer Mother Reading to her Child, in lobby at east side of building

**Paperwork Reduction Act Statement:** This information is being collected for applications to the National Register of Historic Places to nominate properties for listing or determine eligibility for listing, to list properties, and to amend existing listings. Response to this request is required to obtain a benefit in accordance with the National Historic Preservation Act, as amended (16 U.S.C.460 et seq.).

**Estimated Burden Statement:** Public reporting burden for this form is estimated to average 100 hours per response including time for reviewing instructions, gathering and maintaining data, and completing and reviewing the form. Direct comments regarding this burden estimate or any aspect of this form to the Office of Planning and Performance Management, U.S. Dept. of the Interior, 1849 C. Street, NW, Washington, DC.

United States Department of the Interior  
National Park Service

## National Register of Historic Places Continuation Sheet

State Library of Oregon

Name of Property

Marion Co., OR

County and State

Oregon New Deal Resources from the  
PWA or WPA, 1933-1943

Name of multiple listing (if applicable)

Section number Additional Documentation Page 29

### List of Figures

(Resize, compact, and paste images of maps and historic documents in this section. Place captions, with figure numbers above each image. Orient maps so that north is at the top of the page, all document should be inserted with the top toward the top of the page.)

- Figure 1:** Regional Location Map – Google Earth, accessed June 16, 2021.
- Figure 2:** Local Location Map – Google Earth, accessed June 16, 2021.
- Figure 3:** Marion County Tax Assessor Map 07 3W 27AA. The Marion County Tax Assessors map shows the block where the State Library is located and the lots within that block. The state library block, block 83, is 1.71 acres. The lot measures 401 feet in length and 311 feet in width.
- Figure 4:** Marion County Information Technology, File R89530 for Parcel 073W27AA00100, Sketch Area Table Addendum, showing the footprint of the State Library lot, front entrance steps, and building, with dimensions.
- Figure 5:** State Library Floor Plans, Basement Floor Plan, Capitol Reconstruction Commission, Oregon State Library Blueprints, copied by Oregon State Archives for State Library, August 19, 1953, page 6 of 97. The State Archives and the Morris Whitehouse collection at the Oregon Historical Society include a complete original set of blueprints, with elevations. In 1998, the Historical Assessment outlined Preservation, Rehabilitation, and Free zones. Basement includes Preservation Level 2 and Rehabilitation zones.
- Figure 6:** State Library Floor Plans, First Floor Plan, page 7 of 97. In 1998, the Historical Assessment, outlined Preservation, Rehabilitation, and Free zones. First floor includes Preservation 1 zone in lobby from east entrance of building, preservation 2 zone in stairwells, rehabilitation on north and south ends of floor, free zone on west side of floor.
- Figure 7:** State Library Floor Plans, Second Floor Plan, page 8 of 97. In 1998, the Historical Assessment, outlined Preservation, Rehabilitation, and Free zones. Second floor includes Preservation 1 zone by entrance, lobby area, and reference room (north end of floor), preservation 2 zone in stairwells, rehabilitation zone on south end of floor, and free zone on west side of floor.
- Figure 8:** State Library Floor Plans, Third Floor Plan, page 9 of 97. In 1998. The Historical Assessment, outlined Preservation, Rehabilitation, and Free zones. Third floor includes Preservation 1 zone by two story reference room, rest of floor is preservation free zone.
- Figure 9:** State Library Floor Plans, Penthouse or Fourth Floor Plan, page 10 of 97. In 1998, the Historical Assessment outlined Preservation, Rehabilitation, and Free zones. Penthouse is classified as a Preservation Free zone.
- Figure 10:** This historic photograph shows the setting of the State Library in relation to the State Capitol, the Capitol Mall, and adjacent state administrative offices in 1962, facing north. The State Capitol is the large building at the south end of the mall (bottom of the photo). Continuing clockwise from the Capitol is the State Library and then the Department of Consumer and Business Services to the northwest, designed by Skidmore, Owings & Merrill, and built in 1961. On the east side of the mall is the Department of Education on the north, designed by

United States Department of the Interior  
National Park Service

## National Register of Historic Places Continuation Sheet

State Library of Oregon

Name of Property

Marion Co., OR

County and State

Oregon New Deal Resources from the  
PWA or WPA, 1933-1943

Name of multiple listing (if applicable)

Section number Additional Documentation Page 30

Whitehouse & Church, built in 1949, and then the Department of Transportation south of the education building (northeast of the Capitol building), designed by Whitehouse, Church, Newberry & Roehr, and built in 1951. The surrounding landscape is composed of lawn and trees. This photo shows the streets W Summer Street NE and E Summer Street NE, not yet vacated for the mall. (3 of 53/ODOT K7012, in National Register Registration form for Oregon State Capitol)

- Figure 11:** Sketch of Oregon State Library, used in newspaper articles prior to construction of library building, by L.H. Hutchison (original at Oregon Historical Society)
- Figure 12:** Groundbreaking photo shows Harriet C. Long digging for new State Library on February 24, 1938. Governor Charles Martin looking on. Photo that appeared in the *Oregonian* on February 25, 1938 showed Governor Martin with the spade.
- Figure 13:** Cornerstone, laid on southeast corner of building, June 21, 1938. Those present include Helen Lewis, Mirpah Blair, Mrs. Irwin, Grace Jackson, Mrs. Brown, Melba Riopelle, Esther Gibbard, Hazel Ross, Barbara Moberg, Lucille Brainard, Lela Belle Sanders, Gladys Anderson, Madge Maclean, Meredith Lathrop, Josephine Baumgartner, Dorothy McDonald, Edna Patton, Ruth Burgh, and Betsy Doane.
- Figure 14:** View of Block 83 from southeast, September, 1938. View of Cooke-Patton house in front of east elevation of library, prior to demolition of house.
- Figure 15:** Construction photo of State Library from northeast side on May 2, 1938. Photographs of construction were taken by Frank Ives Jones, usually on the first of every month. Photographs are in Oregon Historical Society Whitehouse collection.
- Figure 16:** Construction of State Library June 1, 1938, from northeast side.
- Figure 17:** Construction of State Library building, July 2, 1938, from northwest side.
- Figure 18:** Construction of State Library, October 1, 1938, from east side, shows scaffolding for mounting seal of mission press on east side of building.
- Figure 19:** Construction of State Library, reference room, February 19, 1939, shows ladder for installation of stenciled printers' marks and cast bronze clock on panels, south side of reference room. Windows are on north side; government documents room is at west end of room behind doors with octagonal bronze grills. Three carved wood panels between shelving units on north side illustrate printing press, meadow lark, and Oregon grape.
- Figure 20:** Exterior of completed building from southeast corner, c. February 1939, Boychuk Studio photographers.

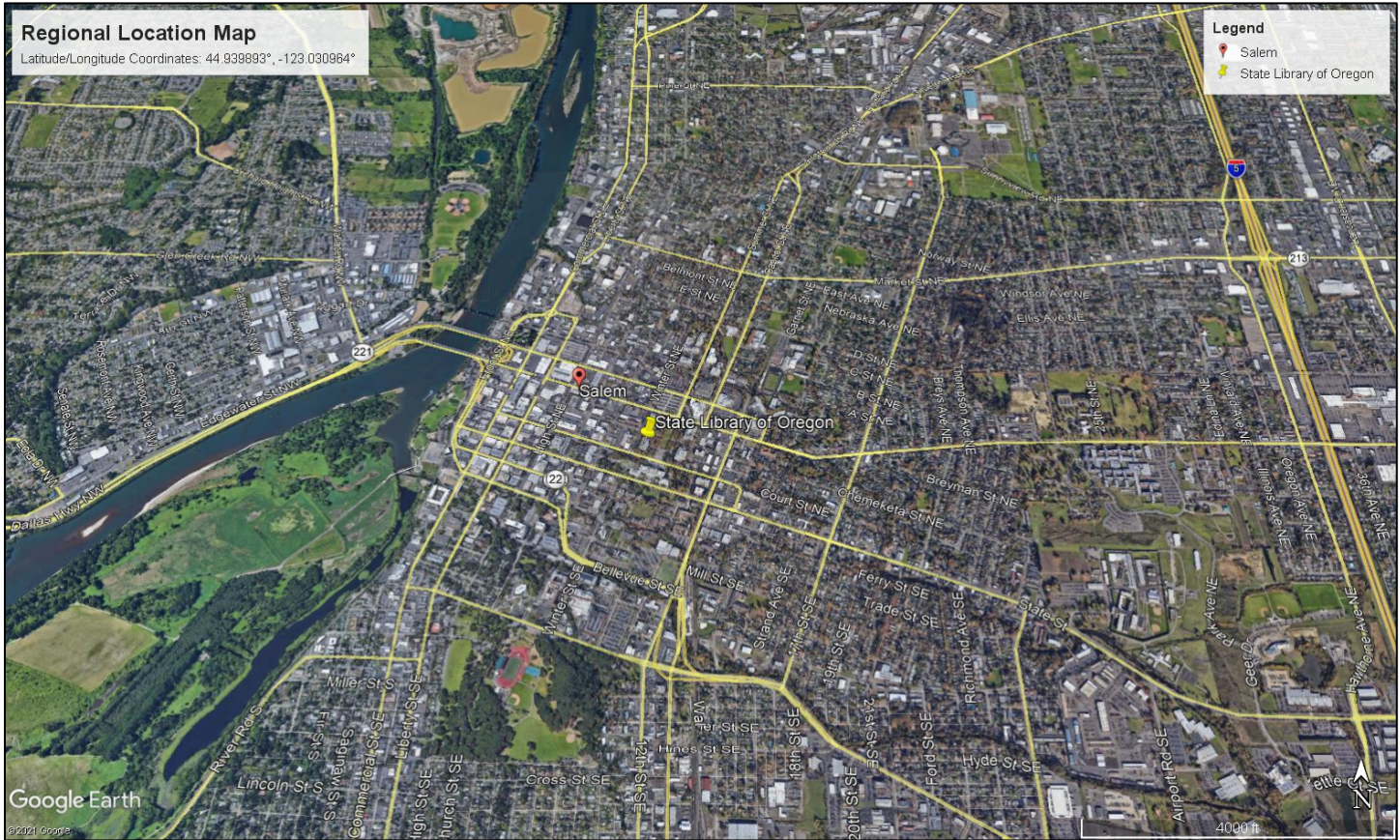
United States Department of the Interior  
National Park Service

# National Register of Historic Places Continuation Sheet

State Library of Oregon
Name of Property Marion Co., OR
County and State Oregon New Deal Resources from the PWA or WPA, 1933-1943
Name of multiple listing (if applicable)

Section number Additional Documentation Page 31

Figure 1 Regional Location Map (Google Earth, 2021)



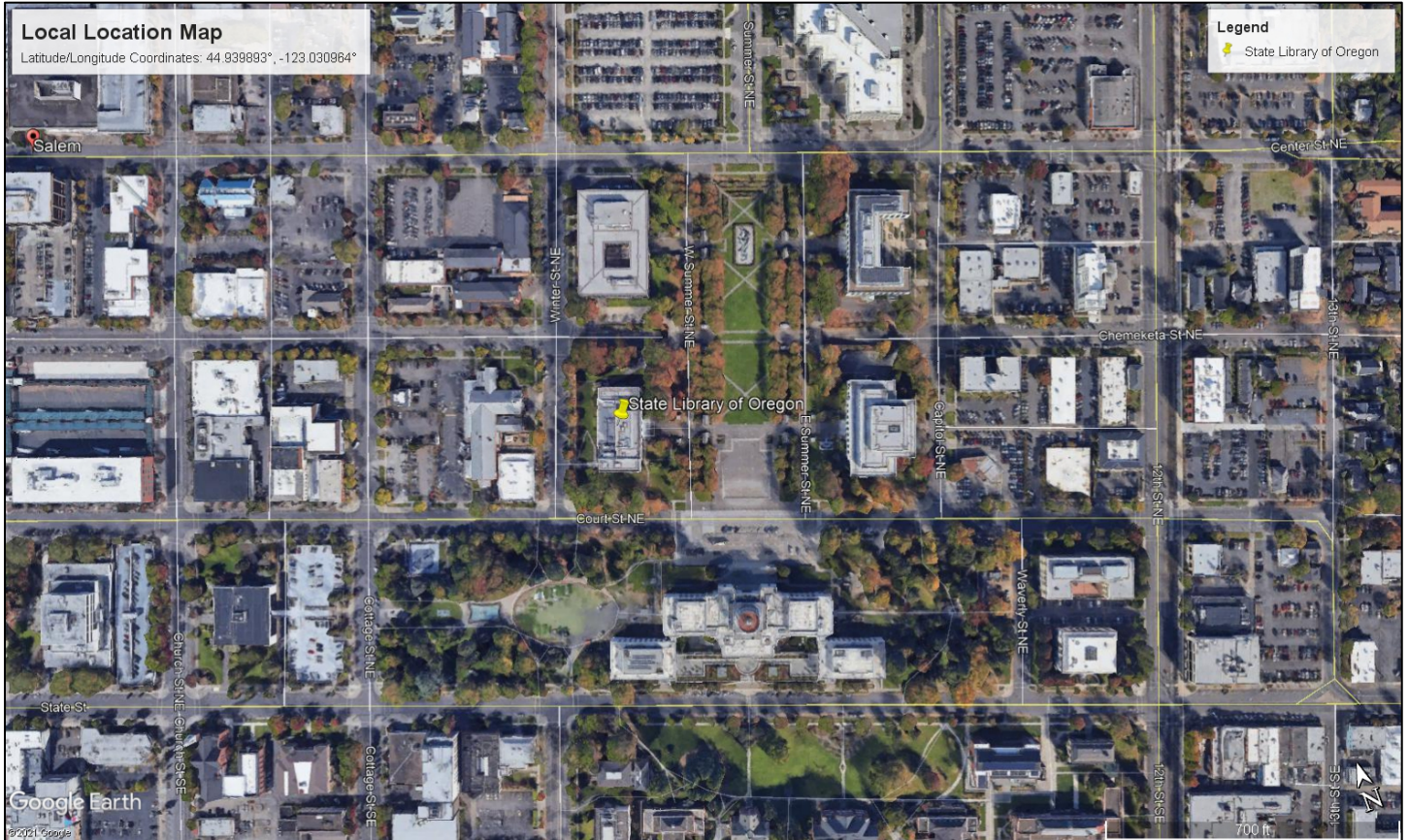
United States Department of the Interior  
National Park Service

# National Register of Historic Places Continuation Sheet

State Library of Oregon
Name of Property Marion Co., OR
County and State Oregon New Deal Resources from the PWA or WPA, 1933-1943
Name of multiple listing (if applicable)

Section number Additional Documentation Page 32

Figure 2 – Local Location Map (Google Earth, 2021)



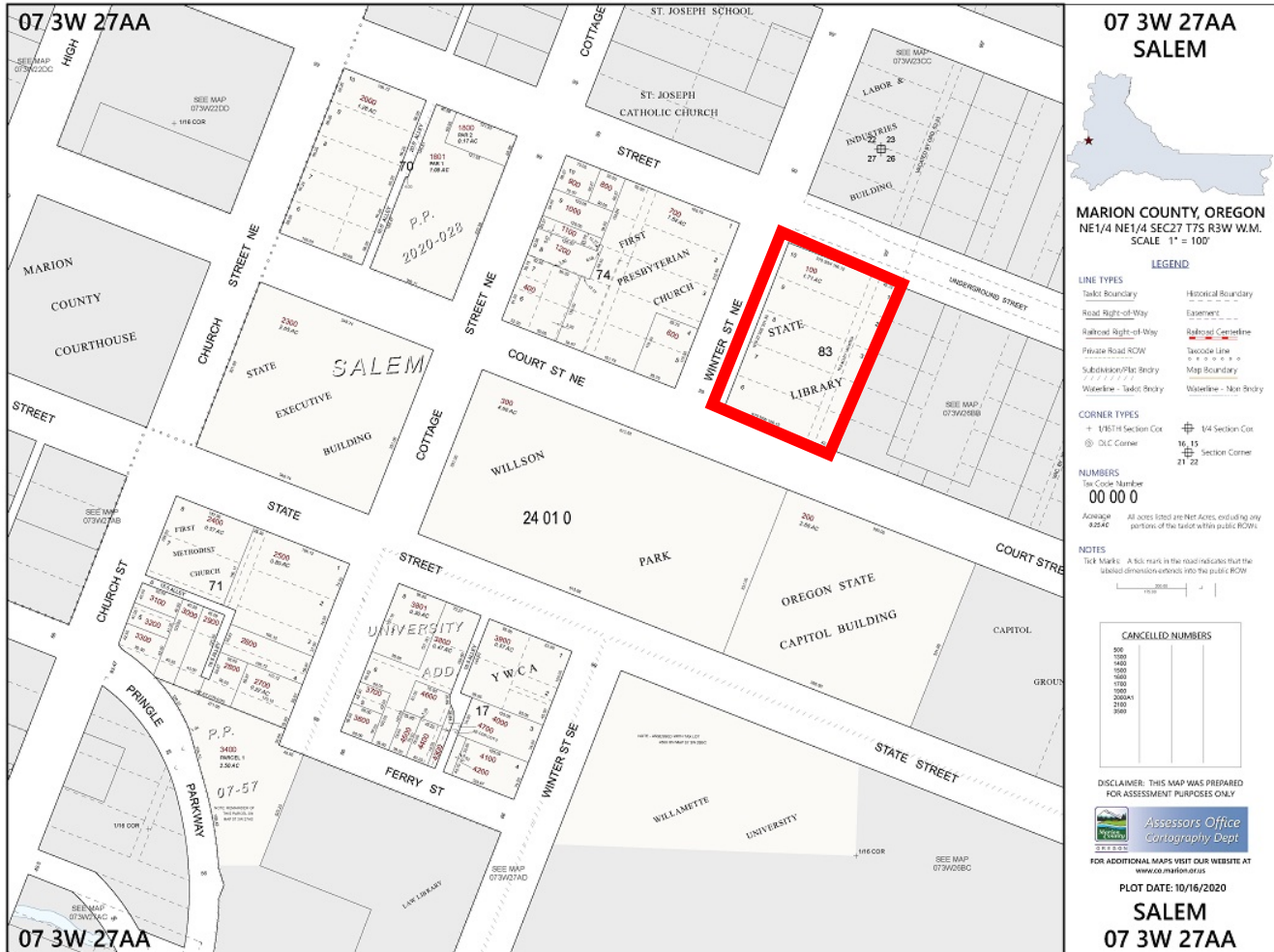
United States Department of the Interior  
National Park Service

# National Register of Historic Places Continuation Sheet

State Library of Oregon
Name of Property Marion Co., OR
County and State Oregon New Deal Resources from the PWA or WPA, 1933-1943
Name of multiple listing (if applicable)

Section number Additional Documentation Page 33

### Figure 3 – Marion County Tax Lot Map 07 3W 27AA Salem



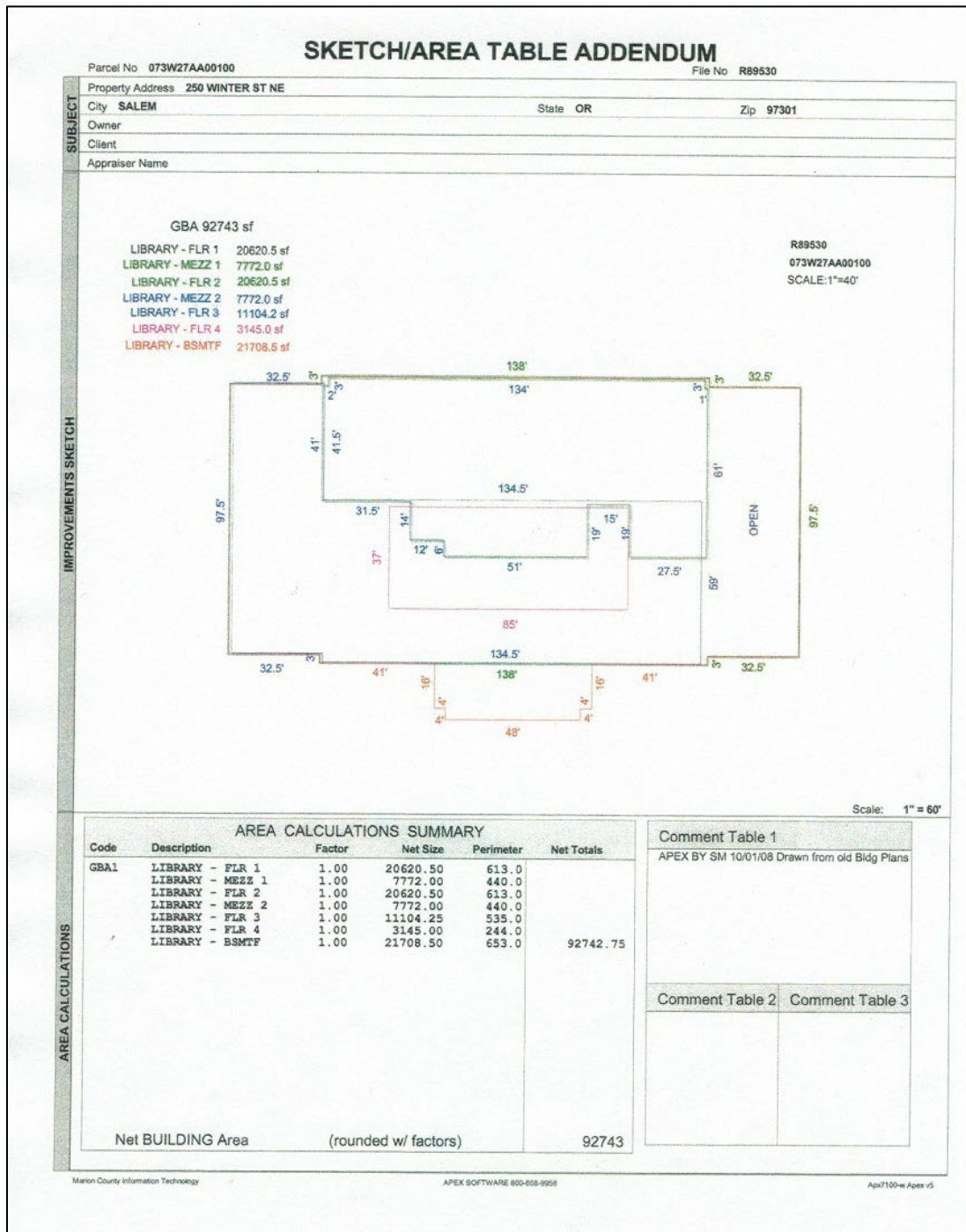
United States Department of the Interior  
National Park Service

National Register of Historic Places  
Continuation Sheet

State Library of Oregon  
Name of Property  
Marion Co., OR  
County and State  
Oregon New Deal Resources from the  
PWA or WPA, 1933-1943  
Name of multiple listing (if applicable)

Section number Additional Documentation Page 34

Figure 4 – Marion County Information Technology, File R89530 for Parcel 073W27AA00100, Sketch Area Table Addendum



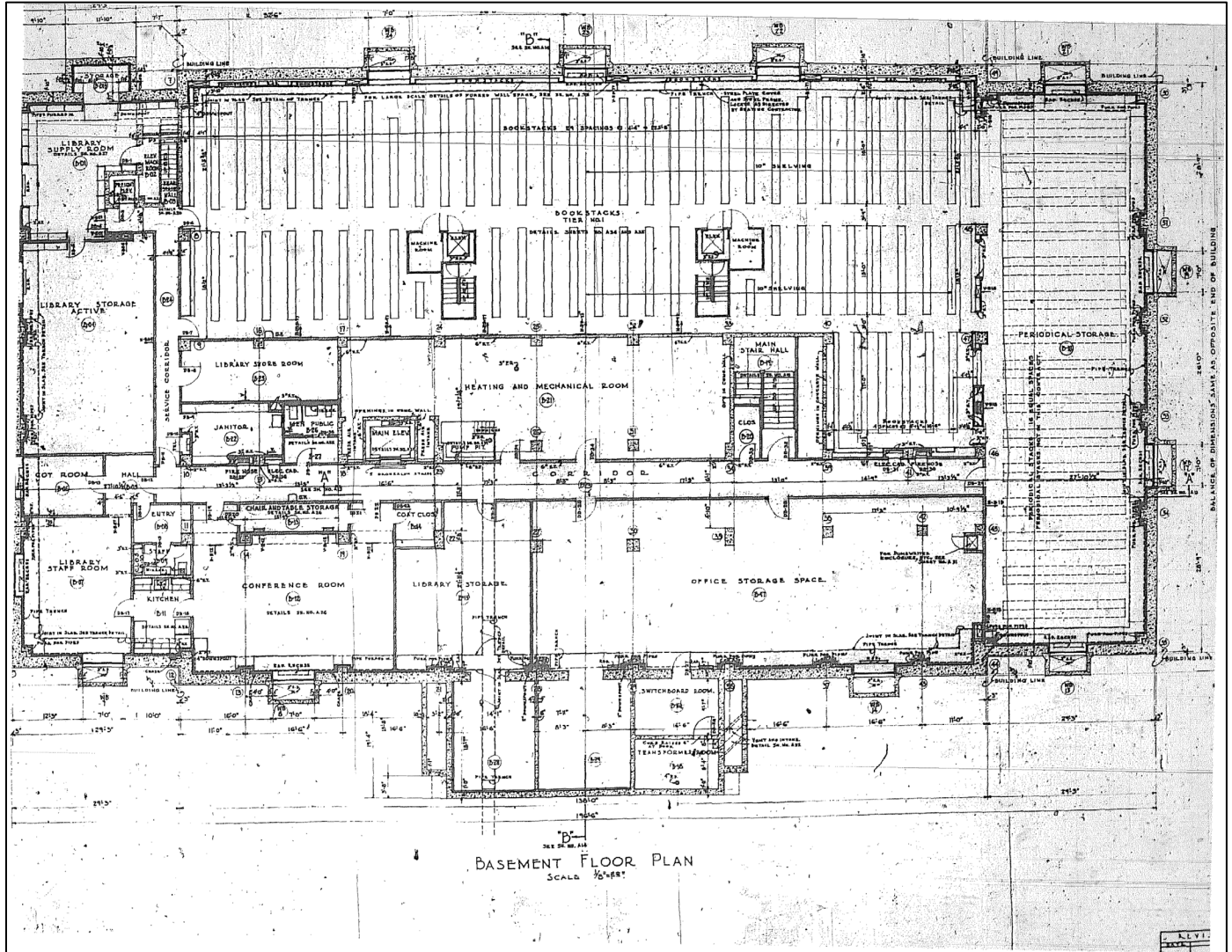
United States Department of the Interior  
National Park Service

# National Register of Historic Places Continuation Sheet

State Library of Oregon
Name of Property
Marion Co., OR
County and State
Oregon New Deal Resources from the PWA or WPA, 1933-1943
Name of multiple listing (if applicable)

Section number Additional Documentation Page 35

Figure 5 – State Library Floor Plans for Basement



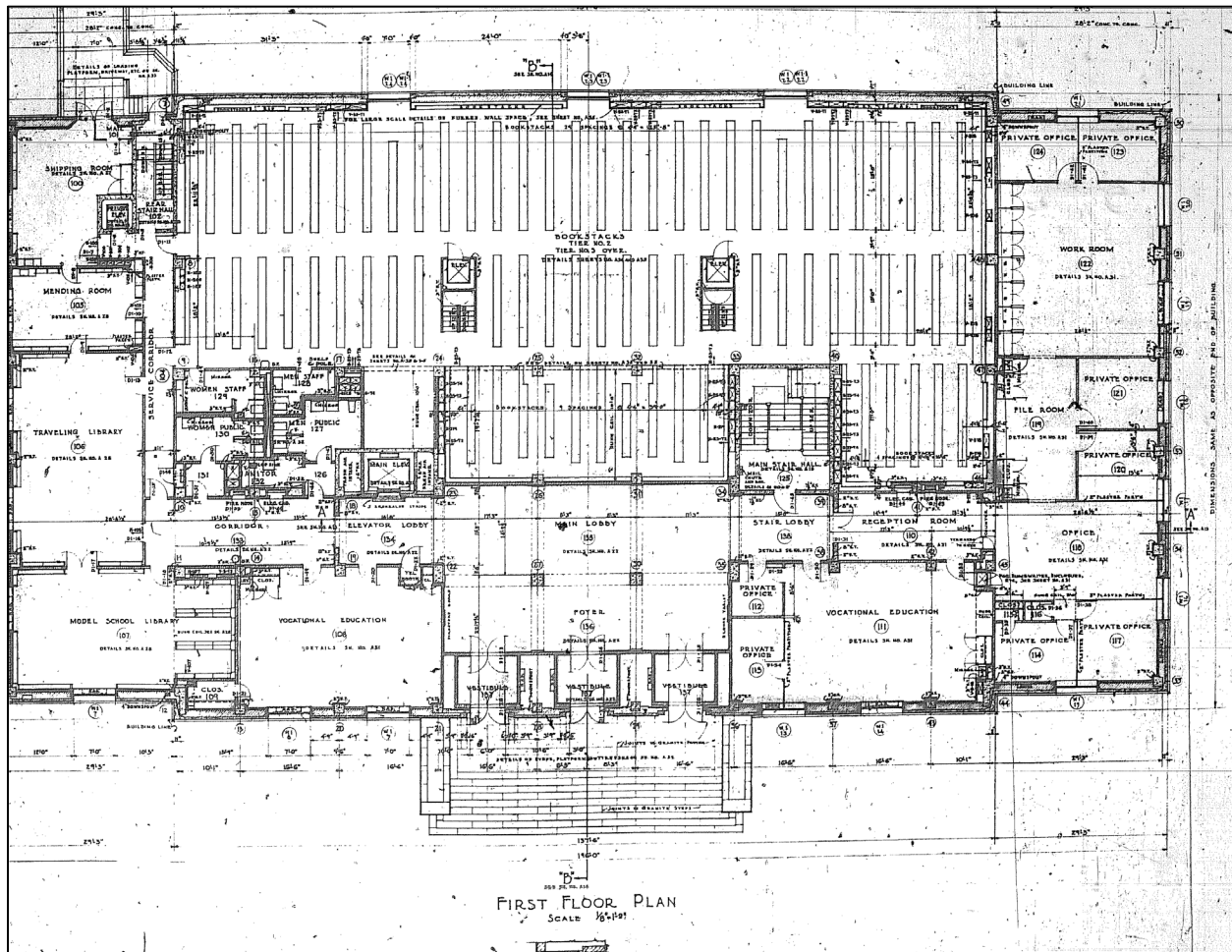
United States Department of the Interior  
National Park Service

# National Register of Historic Places Continuation Sheet

State Library of Oregon
Name of Property
Marion Co., OR
County and State
Oregon New Deal Resources from the PWA or WPA, 1933-1943
Name of multiple listing (if applicable)

Section number Additional Documentation Page 36

Figure 6 – State Library Floor Plans for First Floor



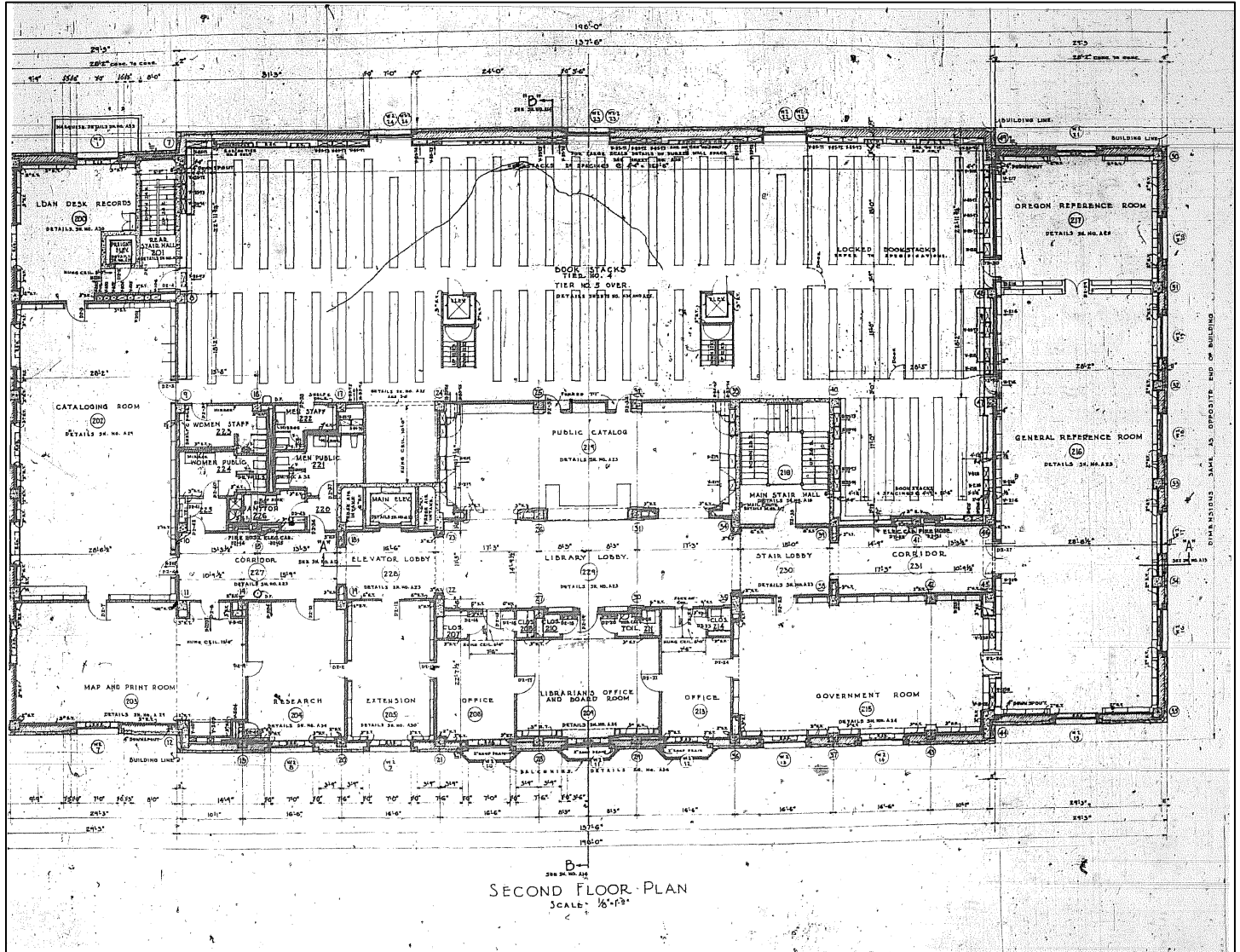
United States Department of the Interior  
National Park Service

# National Register of Historic Places Continuation Sheet

State Library of Oregon
Name of Property
Marion Co., OR
County and State
Oregon New Deal Resources from the PWA or WPA, 1933-1943
Name of multiple listing (if applicable)

Section number Additional Documentation Page 37

Figure 7 – State Library Floor Plans for Second Floor



United States Department of the Interior  
National Park Service

# National Register of Historic Places Continuation Sheet

State Library of Oregon

Name of Property  
Marion Co., OR

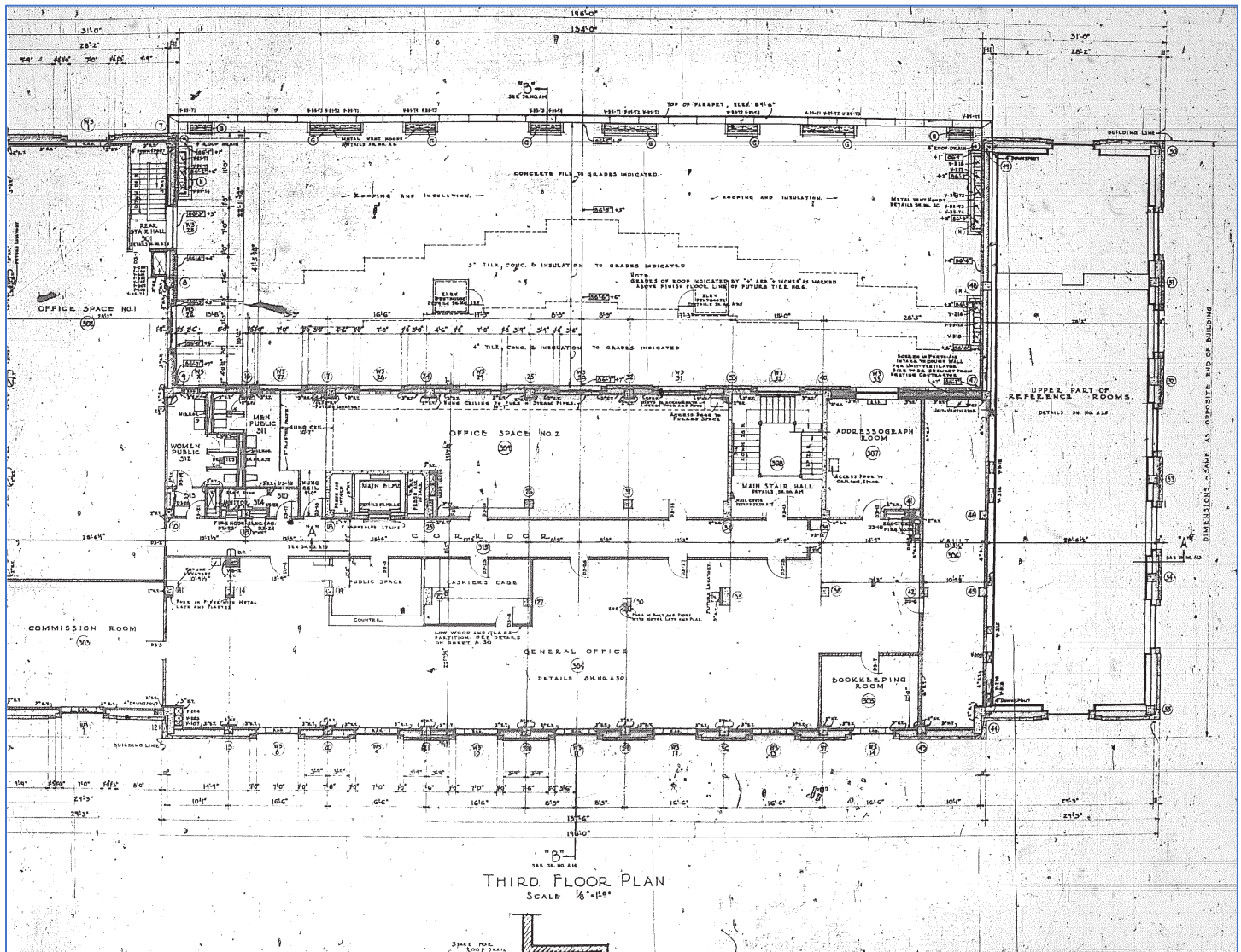
County and State

Oregon New Deal Resources from the  
PWA or WPA, 1933-1943

Name of multiple listing (if applicable)

Section number Additional Documentation Page 38

### Figure 8 – State Library Floor Plans for Third Floor



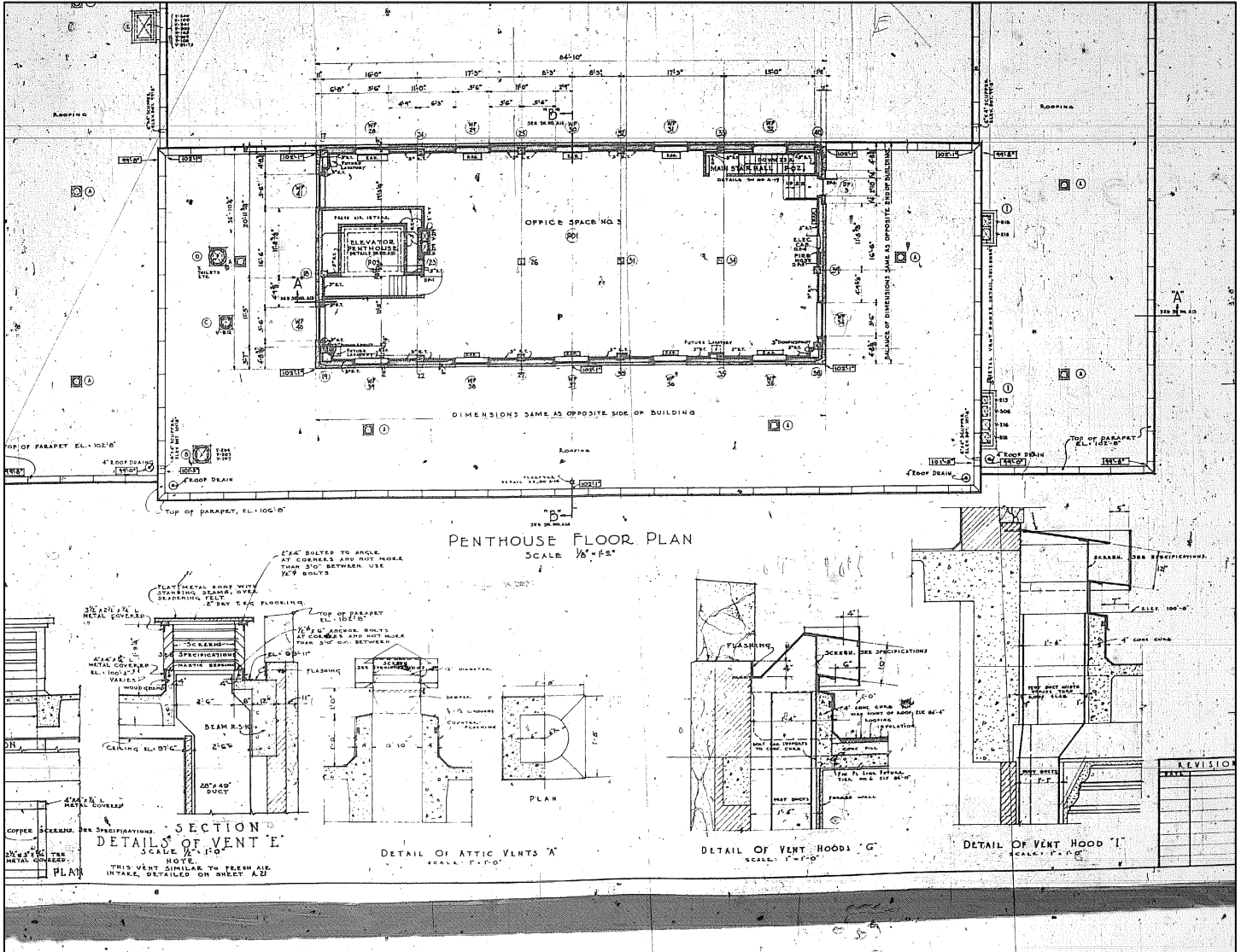
United States Department of the Interior  
National Park Service

# National Register of Historic Places Continuation Sheet

Section number Additional Documentation Page 39

State Library of Oregon
Name of Property Marion Co., OR
County and State Oregon New Deal Resources from the PWA or WPA, 1933-1943
Name of multiple listing (if applicable)

### Figure 9 – State Library Floor Plans for Fourth Floor



United States Department of the Interior  
National Park Service

### National Register of Historic Places Continuation Sheet

Section number Additional Documentation Page 40

State Library of Oregon
Name of Property Marion Co., OR
County and State Oregon New Deal Resources from the PWA or WPA, 1933-1943
Name of multiple listing (if applicable)

**Figure 10 - This historic photograph shows the setting of the State Library in relation to the State Capitol, the Capitol Mall, and adjacent state administrative offices in 1962, facing north. (3 of 53/ODOT K7012, in National Register Registration form for Oregon State Capitol)**



United States Department of the Interior  
National Park Service

# National Register of Historic Places Continuation Sheet

Section number Additional Documentation Page 41

State Library of Oregon
Name of Property
Marion Co., OR
County and State
Oregon New Deal Resources from the PWA or WPA, 1933-1943
Name of multiple listing (if applicable)

Figure 11 – Sketch of State Library, used in newspaper articles prior to construction of library building, by L.H. Hutchison (original at Oregon Historical Society)



United States Department of the Interior  
National Park Service

### National Register of Historic Places Continuation Sheet

Section number Additional Documentation Page 42

State Library of Oregon
Name of Property Marion Co., OR
County and State Oregon New Deal Resources from the PWA or WPA, 1933-1943
Name of multiple listing (if applicable)

**Figure 12 – Groundbreaking photo shows librarian Harriet Long breaking ground for new State Library on February 24, 1938. Governor Charles Martin looking on. Photo that appeared in *Oregonian* on February 25 showed Governor Martin with spade.**



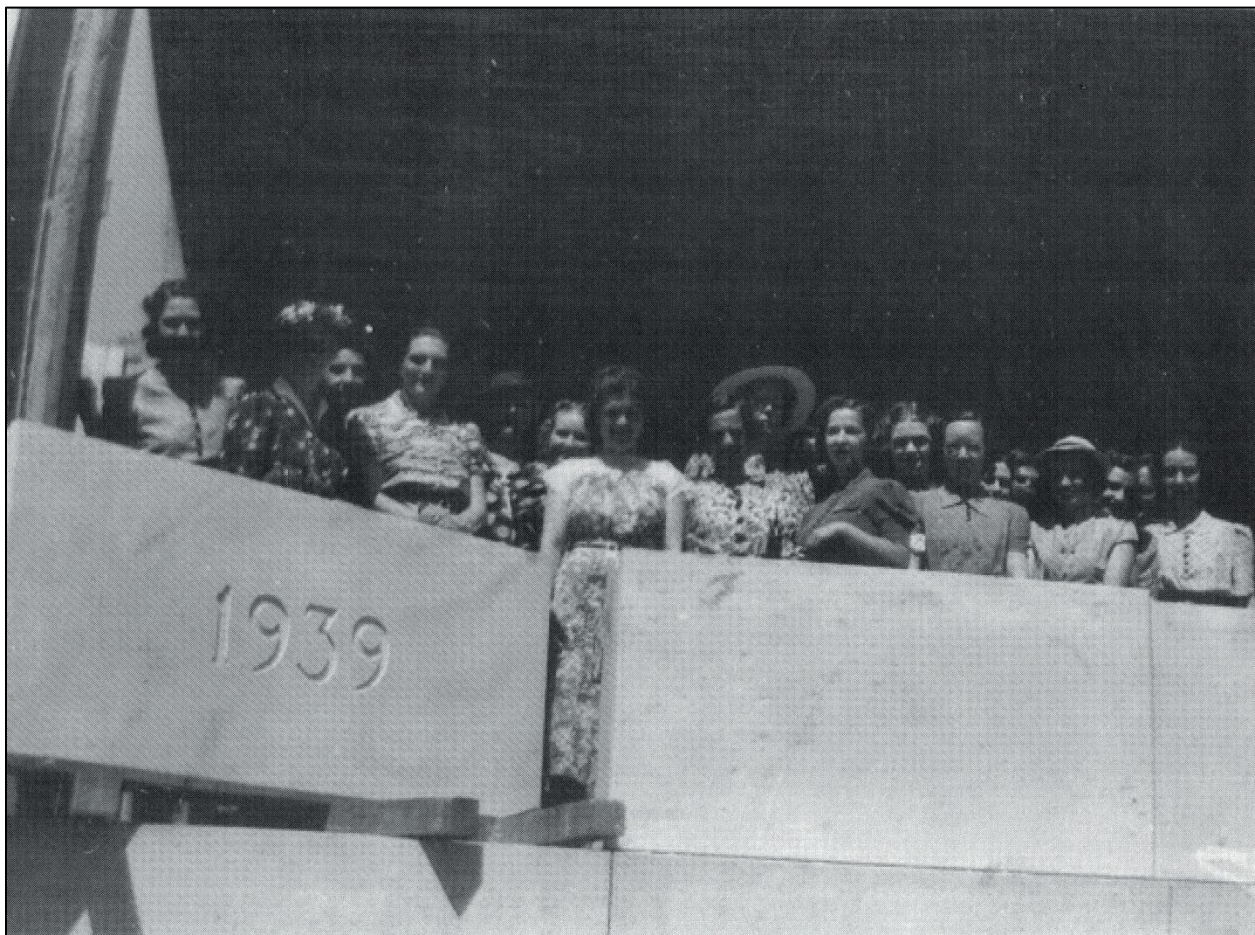
United States Department of the Interior  
National Park Service

**National Register of Historic Places  
Continuation Sheet**

Section number Additional Documentation Page 43

State Library of Oregon
Name of Property Marion Co., OR
County and State Oregon New Deal Resources from the PWA or WPA, 1933-1943
Name of multiple listing (if applicable)

**Figure 13 - Cornerstone, laid on southeast corner of building, June 21, 1938. Those present include Helen Lewis, Mirpah Blair, Mrs. Irwin, Grace Jackson, Mrs. Brown, Melba Riopelle, Esther Gibbard, Hazel Ross, Barbara Moberg, Lucille Brainard, Lela Belle Sanders, Gladys Anderson, Madge Maclean, Meredith Lathrop, Josephine Baumgartner, Dorothy McDonald, Edna Patton, Ruth Burgh, and Betsy Doane.**



United States Department of the Interior  
National Park Service

### National Register of Historic Places Continuation Sheet

Section number Additional Documentation Page 44

State Library of Oregon
Name of Property Marion Co., OR
County and State Oregon New Deal Resources from the PWA or WPA, 1933-1943
Name of multiple listing (if applicable)

**Figure 14 – View of Block 83 from southeast, September, 1938. View of Cooke-Patton house in front of east elevation of library, prior to demolition of house.**



United States Department of the Interior  
National Park Service

# National Register of Historic Places Continuation Sheet

Section number Additional Documentation Page 45

State Library of Oregon
Name of Property
Marion Co., OR
County and State
Oregon New Deal Resources from the PWA or WPA, 1933-1943
Name of multiple listing (if applicable)

**Figure 15 – Construction photo of State Library from northeast side on May 2, 1938. Photographs of construction were taken by Frank Ives Jones, usually on the first of every month. Photographs are in Oregon Historical Society Whitehouse collection.**



United States Department of the Interior  
National Park Service

# National Register of Historic Places Continuation Sheet

Section number Additional Documentation

Page 46

State Library of Oregon
Name of Property Marion Co., OR
County and State Oregon New Deal Resources from the PWA or WPA, 1933-1943
Name of multiple listing (if applicable)

Figure 16 – Construction of State Library June 1, 1938, from northeast side.



United States Department of the Interior  
National Park Service

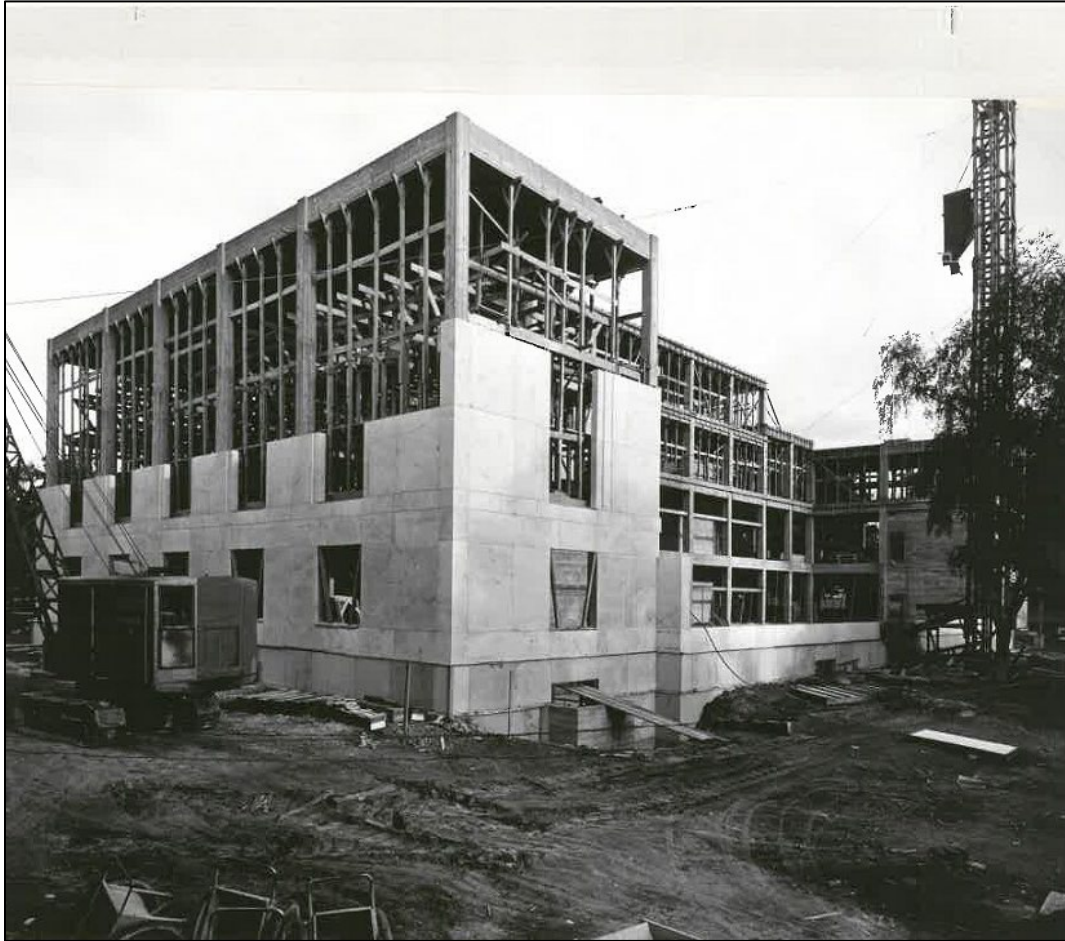
# National Register of Historic Places Continuation Sheet

Section number Additional Documentation

Page 47

State Library of Oregon
Name of Property Marion Co., OR
County and State Oregon New Deal Resources from the PWA or WPA, 1933-1943
Name of multiple listing (if applicable)

**Figure 17 – Construction of State Library building, July 2, 1938, from northwest side.**



United States Department of the Interior  
National Park Service

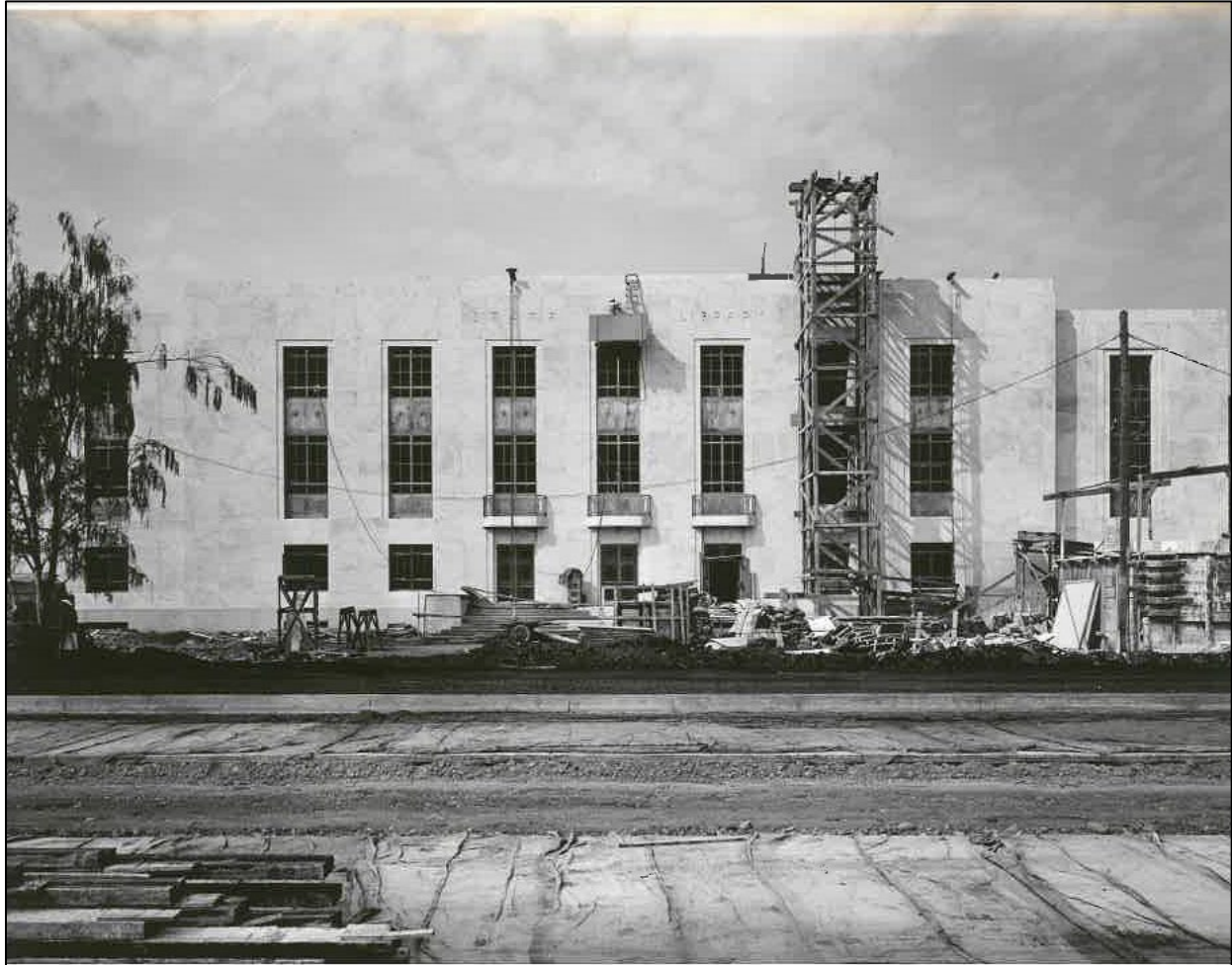
# National Register of Historic Places Continuation Sheet

Section number Additional Documentation

Page 48

State Library of Oregon
Name of Property
Marion Co., OR
County and State
Oregon New Deal Resources from the PWA or WPA, 1933-1943
Name of multiple listing (if applicable)

**Figure 18 – Construction of State Library, October 1, 1938, from east side, shows scaffolding for mounting seal of mission press on east side of building.**



United States Department of the Interior  
National Park Service

**National Register of Historic Places  
Continuation Sheet**

Section number Additional Documentation Page 49

State Library of Oregon
Name of Property
Marion Co., OR
County and State
Oregon New Deal Resources from the PWA or WPA, 1933-1943
Name of multiple listing (if applicable)

**Figure 19 – Construction of State Library, reference room, February 19, 1939, shows ladder for installation of stenciled printers’ marks and cast bronze clock on panels, south side of reference room. Windows are on north side; government documents room is at west end of room behind doors with octagonal bronze grills. Three carved wood panels between shelving units on north side illustrate printing press, meadow lark, and Oregon grape.**



United States Department of the Interior  
National Park Service

### National Register of Historic Places Continuation Sheet

Section number Additional Documentation Page 50

State Library of Oregon
Name of Property Marion Co., OR
County and State Oregon New Deal Resources from the PWA or WPA, 1933-1943
Name of multiple listing (if applicable)

**Figure 20 – Exterior of completed building from southeast corner, c. February 1939, Boychuk Studio photographers.**





Photo 1 of 16 – OR\_MarionCounty\_StateLibrary\_0001; State Library and setting, facing west



Photo 2 of 16 - OR\_MarionCounty\_StateLibrary\_0002; State Library northeast corner of building, facing southwest



Photo 3 of 16 - OR\_MarionCounty\_StateLibrary\_0003; state library southwest corner of building, facing northeast



Photo 4 of 16 - OR\_MarionCounty\_StateLibrary\_0004; seal at center top of east side of State Library building shows mission printing press, facing west



Photo 5 of 16 - OR\_MarionCounty\_StateLibrary\_0005; balcony, pine cone and needle decoration on base of balcony, geometric rectangular and diagonal designs of balcony rail and carving of open book and tree of state library building, facing west



Photo 6 of 16 – OR\_MarionCounty\_StateLibrary\_0006; State Library east side, carved seal at top of building between “State” and “Library;” canted or octagonal transom windows and bronze stars in panels between windows, facing west



Photo 7 of 16 - OR\_MarionCounty\_StateLibrary\_0007; State Library north side, loading dock on west corner result of alteration, landscaping includes several trees identified on the State Capitol State Park walking tour: Dove Tree (*Davidia involucrata*) and Northern Red Oak (*Quercus rubra*), facing south



Photo 8 of 16 - OR\_MarionCounty\_StateLibrary\_0008; west side of building showing altered door and canopy with public entrance from Winter Street, facing east



Photo 9 of 16 - OR\_MarionCounty\_StateLibrary\_0009; State Library south side, landscaping is lawn, rhododendrons and trimmed hedges, facing north



Photo 10 of 16 - OR\_MarionCounty\_StateLibrary\_0010; first floor lobby toward foyer, three double doors, vestibule and second set of double doors, showing original hanging light fixtures, pinecone and needle frieze, marble panel walls, and terrazzo floor in star design, facing northeast



Photo 11 of 16 - OR\_MarionCounty\_StateLibrary\_0011; first floor lobby toward marble carved Pioneer Mother Reading to her Child (Gabriel Lavare), facing southwest



Photo 12 of 16 - OR\_MarionCounty\_StateLibrary\_0012; second floor hall, facing Elevator and Map & Print Room (names carved above entry), three octagonal bronze grilles at each side of entry to Map & Print Room (originally on doors), facing northeast



Photo 13 of 16 - OR\_MarionCounty\_StateLibrary\_0013; reference room of room empty two-story reference room, six bronze pendant light fixtures, octagonal panels and diamond design in coffered ceiling, three wood medallions carved with Oregon printing press (first on west coast), state bird (meadowlark), and state flower (Oregon Grape), facing east



Photo 14 of 16 – OR\_MarionCounty\_StateLibrary\_0014; meadowlark (state bird) carved in wood panel in reference room, one of three panels illustrating state symbols, facing south



Photo 15 of 16 - OR\_MarionCounty\_StateLibrary\_0015; librarian's office, paneled in knotty Ponderosa Pine to (from the Ochoco Forest in Central Oregon), floor to ceiling, wood table divided for leaves, six spindle-back chairs, on east side of building over front entrance and balconies, facing southeast

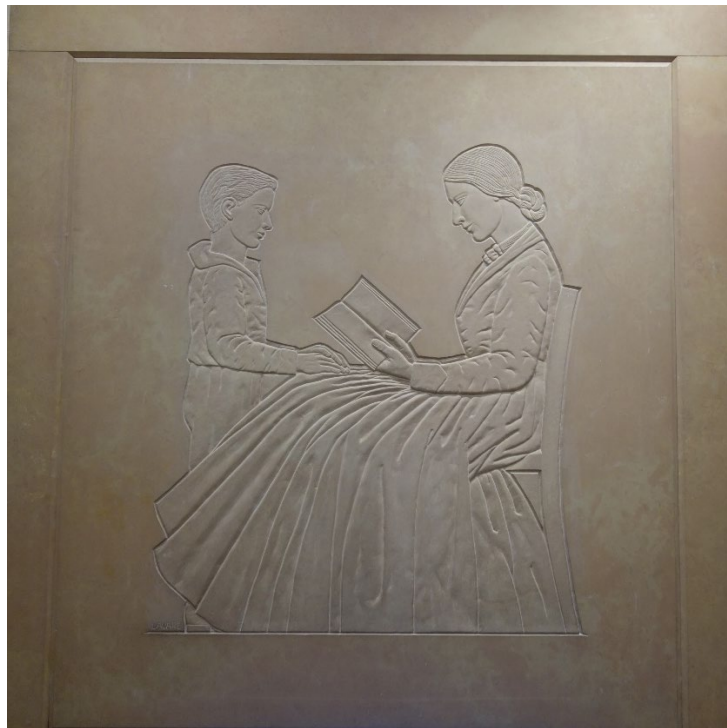


Photo 16 of 16 – OR\_MarionCounty\_StateLibrary\_0016; Pioneer Mother Reading to her Child, in lobby at east side of building