

United States Department of the Interior
National Park Service

RECEIVED

AUG 08 1993

National Register of Historic Places
Registration Form

NATIONAL
REGISTER

This form is for use in nominating or requesting determinations for individual properties and districts. See instructions in *How to Complete the National Register of Historic Places Registration Form* (National Register Bulletin 16A). Complete each item by marking "x" in the appropriate box or by entering the information requested. If an item does not apply to the property being documented, enter "N/A" for "not applicable." For functions, architectural classification, materials, and areas of significance, enter only categories and subcategories from the instructions. Place additional entries and narrative items on continuation sheets (NPS Form 10-900a). Use a typewriter, word processor, or computer, to complete all items.

1. Name of Property

historic name Bend High School

other names/site number Bend-LaPine School District Administration Office

2. Location

street & number 520 NW Wall Street N/A not for publication

city or town Bend N/A vicinity

state Oregon code OR county Deschutes code 017 zip code 97709

3. State/Federal Agency Certification

As the designated authority under the National Historic Preservation Act, as amended, I hereby certify that this nomination request for determination of eligibility meets the documentation standards for registering properties in the National Register of Historic Places and meets the procedural and professional requirements set forth in 36 CFR Part 60. In my opinion, the property meets does not meet the National Register criteria. I recommend that this property be considered significant nationally statewide locally. (See continuation sheet for additional comments.)

Janna Hannah

July 23, 1993

Signature of certifying official/Title Deputy SHPO

Date

Oregon State Historic Preservation Office

State of Federal agency and bureau

In my opinion, the property meets does not meet the National Register criteria. (See continuation sheet for additional comments.)

Signature of certifying official/Title

Date

State or Federal agency and bureau

4. National Park Service Certification

I hereby certify that the property is:

- entered in the National Register. See continuation sheet.
- determined eligible for the National Register. See continuation sheet.
- determined not eligible for the National Register.
- removed from the National Register.
- other, (explain): _____

Signature of the Keeper

Date of Action

Patricia Andrews

9/23/93

Bend High School
Name of Property

Deschutes, Oregon
County and State

5. Classification

Ownership of Property
(Check as many boxes as apply)

- private
- public-local
- public-State
- public-Federal

Category of Property
(Check only one box)

- building(s)
- district
- site
- structure
- object

Number of Resources within Property
(Do not include previously listed resources in the count.)

Contributing	Noncontributing	
1	1	buildings
		sites
		structures
		objects
1	1	Total

Name of related multiple property listing
(Enter "N/A" if property is not part of a multiple property listing.)
Historic Development of The Bend
Company in Bend, Oregon

Number of contributing resources previously listed in the National Register
N/A

6. Function or Use

Historic Functions
(Enter categories from instructions)

Secondary School

Current Functions
(Enter categories from instructions)

School district administrative office
Kindergarten classrooms

7. Description

Architectural Classification
(Enter categories from instructions)

Late 19th and 20th Century Revivals:
Beaux Arts Classicism

Materials
(Enter categories from instructions)

foundation concrete
walls brick, stone

roof asphalt, built-up
other limestone trim

Narrative Description

(Describe the historic and current condition of the property on one or more continuation sheets.)

**United States Department of the Interior
National Park Service****National Register of Historic Places
Continuation Sheet**Section number 7 Page 1

Bend High School is two stories in height on a high basement and has an U-shaped footprint measuring 120 x 247 feet. Wall construction is brick masonry on a ground course of rock-faced random ashlar. Stylistically, it exemplifies Beaux Arts Classicism in the Renaissance vein. English bond brick construction is contrasted effectively with limestone elements. The overall front facade is anchored well on two ends with stone and brick massing penetrated in the center with a recessed area with broad bands of glass, suggesting a Chicago School (1890-1915) influence, culminated with a strong entrance statement in the center. It exhibits bilateral symmetry, is well balanced and detailed with the standard wide open stairway leading to the first floor.

The main portico entrance is impressive, exhibiting cut stone brackets in the parapet wall and a double string course of cut stone. The portico entrance itself is tripartite brick and cut stone elements with round-head arches and articulated corners of brick with cut stone base and head supported by a string course of cut stone over a rusticated base. The main wall of the building behind the portico is embellished by pierced brick pilasters with sculptured cut stone and cut stone caps, doric in character.

Windows are tri-level, wood casement assemblies with strong mullions and divided lights. The expanse of window banks afforded the amount of natural light to the interior considered ideal for schools. On the interior faces of the court, which are less articulated, the frameless openings give the building a spartan, Modernistic feeling.

A stone balustrade intermixed with brick parapet walls top a cut stone cornice. At the head of the second story windows in the side bays is a cut stone string course. The corners of the building are brick quoins which terminate a field of random stone and running bond. A base/water table of cut stone runs over a rusticated base.

The four minor entrances, one on the east and west elevations and two on the south, are identical. They provide a strong vertical statement which contrasts with the building's horizontal lines. A fanlight and scrollwork beneath the pediment, which exhibits a returning eave over the pilaster, are characteristic of the style. The fanlight is strategically placed at the level of the second floor stair landing. A garland ornamentation within the pediment shields

**United States Department of the Interior
National Park Service**

**National Register of Historic Places
Continuation Sheet**

Section number 7 Page 2

the keystone enhanced entrance. The trim is mildly ornate. Corners exhibit the same brick quoin arrangement as featured on the front facade. The east and west facades exhibit similar windows as the front, topped with string course of stone up to a stone cornice and a combination ballustrade and brick parapet wall. A soldier course brick header lies over the first floor windows, while the second floor has a string course of stone. Stone lug sills frame the lower portion of the windows. The stone work which creates the water table not only receives the rusticated piers, but also features voussoirs with a keystone. The elements provide a moderately strong statement, neoclassical in nature.

The rear facade of the building is much less decorative than the front or the sides. The stonework is dramatically reduced as are other details. The E-shaped building turns the corners on the wings of the building. The wings exhibit a stone cornice at the top with a totally brick parapet and a string course over the second-story windows. This terminates in the main rear wall of the building. There, the second-story windows display one soldier course of brick whereas the first story continues a one-and-a-half soldier course header. A stone cap completes the parapet wall. A rear yard rises to the stone water table.

Offset from the southeast (rear) corner of the former high school is a non-historic maintenance shop of concrete block construction that was built in the 1960s. L-shaped in plan and a single story in height, the building has an overall footprint of 101 x 90 feet. It has a flat, built-up roof and overhead doors in the south elevation. Two of the garage bays are paired at the easterly end of the south face, and one bay is at the west end. The building is counted a non-contributing feature of the nominated area.

8. Statement of Significance

Applicable National Register Criteria

(Mark "x" in one or more boxes for the criteria qualifying the property for National Register listing.)

- A** Property is associated with events that have made a significant contribution to the broad patterns of our history.
- B** Property is associated with the lives of persons significant in our past.
- C** Property embodies the distinctive characteristics of a type, period, or method of construction or represents the work of a master, or possesses high artistic values, or represents a significant and distinguishable entity whose components lack individual distinction.
- D** Property has yielded, or is likely to yield, information important in prehistory or history.

Criteria Considerations

(Mark "x" in all the boxes that apply.)

Property is:

- A** owned by a religious institution or used for religious purposes.
- B** removed from its original location.
- C** a birthplace or grave.
- D** a cemetery.
- E** a reconstructed building, object, or structure.
- F** a commemorative property.
- G** less than 50 years of age or achieved significance within the past 50 years.

Narrative Statement of Significance

(Explain the significance of the property on one or more continuation sheets.)

9. Major Bibliographical References

Bibliography

(Cite the books, articles, and other sources used in preparing this form on one or more continuation sheets.)

Previous documentation on file (NPS):

- preliminary determination of individual listing (36 CFR 67) has been requested
- previously listed in the National Register
- previously determined eligible by the National Register
- designated a National Historic Landmark
- recorded by Historic American Buildings Survey # _____
- recorded by Historic American Engineering Record # _____

Areas of Significance

(Enter categories from instructions)

Architecture _____

Community Planning and Development _____

Period of Significance

1924-1925 _____

Significant Dates

1925 _____

Significant Person

(Complete if Criterion B is marked above)

N/A _____

Cultural Affiliation

N/A _____

Architect/Builder

Thompson, Hugh M., Architect _____

Brosterhous, Edward P., Builder _____

Gould, Robert B., Engineer _____

Primary location of additional data:

- State Historic Preservation Office
- Other State agency
- Federal agency
- Local government
- University
- Other

Name of repository:

Deschutes Historical Center _____

Bend High School
Name of Property

Deschutes, Oregon
County and State

10. Geographical Data

Acreeage of Property 3.17 acres

Bend, Oregon 1:24000

UTM References

(Place additional UTM references on a continuation sheet.)

1

1	1	0
---	---	---

 Zone

6	3	4	9	6	0
---	---	---	---	---	---

 Easting

4	8	7	9	3	0	0
---	---	---	---	---	---	---

 Northing

3

--	--	--

 Zone

--	--	--	--	--	--

 Easting

--	--	--	--	--	--	--

 Northing

See continuation sheet

Verbal Boundary Description

(Describe the boundaries of the property on a continuation sheet.)

Boundary Justification

(Explain why the boundaries were selected on a continuation sheet.)

11. Form Prepared By

name/title Michael Hall, Associate Planner: Historic and Cultural Resources

organization Deschutes County Community Development date August 1, 1992

Department

street & number 1130 NW Harriman Street telephone (503) 385-1704

city or town Bend state Oregon zip code 97701

Additional Documentation

Submit the following items with the completed form:

Continuation Sheets

Maps

A **USGS map** (7.5 or 15 minute series) indicating the property's location.

A **Sketch map** for historic districts and properties having large acreage or numerous resources.

Photographs

Representative **black and white photographs** of the property.

Additional items

(Check with the SHPO or FPO for any additional items)

Property Owner

(Complete this item at the request of SHPO or FPO.)

name Bend-LaPine School District

street & number 520 NW Wall Street telephone (503) 383-6005

city or town Bend state Oregon zip code 97709

Paperwork Reduction Act Statement: This information is being collected for applications to the National Register of Historic Places to nominate properties for listing or determine eligibility for listing, to list properties, and to amend existing listings. Response to this request is required to obtain a benefit in accordance with the National Historic Preservation Act, as amended (16 U.S.C. 470 *et seq.*)

Estimated Burden Statement: Public reporting burden for this form is estimated to average 18.1 hours per response including time for reviewing instructions, gathering and maintaining data, and completing and reviewing the form. Direct comments regarding this burden estimate or any aspect of this form to the Chief, Administrative Services Division, National Park Service, P.O. Box 37127, Washington, DC 20013-7127; and the Office of Management and Budget, Paperwork Reductions Projects (1024-0018), Washington, DC 20503.

**United States Department of the Interior
National Park Service**

**National Register of Historic Places
Continuation Sheet**

Section number 8 Page 1

The building is significant under National Register Criterion "A" for its association with development in Bend which was brought about by The Bend Company, directly or indirectly, from 1911 to 1939. It also is significant under Criterion "C" as an outstanding and well preserved local example of architecture in the tradition of Beaux Arts Classicism in Bend. As such, it meets registration requirements set forth in the MPS.

Residents of Farewell Bend, located on the Deschutes River, established a school as early as 1881. On February 14, 1882, the Bend School District, School District No. 12, was organized. A log cabin on the Farewell Bend place, presently Drake Park, was erected to be used as a school house. In 1902, the school moved to a new building on Wall Street. By 1905, the school was inadequate for the district's 200 students. A bond issue to build a new school was approved. The new school opened on September 10, 1906. In February of 1906, a school election had approved a full four-year high school, organized under Oregon State Laws.

A high school curriculum had been organized in 1904, through the efforts of Miss Ruth Reid (Mrs. H.J. Overturf). Reid was the first principal and worked diligently to raise standards and to make it a complete four-year program. Reid School, built in 1914 and currently the home of the Des Chutes Historical Center, honored her efforts. Four high school students graduated in 1909. By the 1912-1913 school year, the services of three teachers were required.

Bend's growth rate was rising rapidly by this time. The railroad had arrived in 1911, the Deschutes Reclamation and Irrigation Project had been completed, homesteaders were arriving, electricity and water were available and construction of the Shevlin-Hixon and Brooks-Scanlon lumber mills was scheduled to begin in 1915. School districts were forming throughout the area. School buildings were being built and additional classrooms were being added to existing facilities. In February 1917, a new eight-room brick building was built at Central School, and the high school moved into it. High School enrollment was 115 by September 1917. Growth continued. Overcrowded classrooms became the norm.

United States Department of the Interior
National Park Service

National Register of Historic Places
Continuation Sheet

Section number 8 Page 2

As early as December 1920, the City's growth initiated a plea from City Superintendent, S.W. Moore, for a new high school to be built to meet present and future needs of the district. Moore recommended "immediate and purposeful action in the matter of financing and building a new high school". His reported stated: "There is a need for permanent buildings, as is shown by the construction, the use of twelve schoolrooms in shacks, the use of two rooms in a store building, and also two rooms in a cellar, making a total of sixteen rooms that are temporary makeshifts at best, and wholly inadequate in meeting the needs of a modern school". He noted, "... the schools ... are overcrowded, while a material and immediate growth seem certain. We have reached a point in our economic development where ... the demand will increase in geometrical ratio in the future".

The Bend Bulletin editorialized December 4, 1922:

A NEW HIGH SCHOOL

The tremendous increase in the number of children in school district one as disclosed by the recent school census points inevitably to the need for increased facilities for our pupils before the opening of the next fall term. Great as that increase is, it is only a fraction of the total to be expected by that time. As yet, only a small portion of the new population which is expected with the opening of the new mills is here. If nearly 2,000 children of school age have been found as a result of this preliminary growth, what may be expected by another year?

Already the school board recognizes its problem, as is made evident by its preliminary discussion of the subject. The plan which is proposed, that is, to give the present high school over to grade classes and to build a new high school, seems to be the best solution. It is the same as the one suggested a year ago. It makes available for the grades a building which can be easily adapted to their use, and it gives opportunity of planning a high school building in line with the needs of the district not fully realized when the present building was planned.

**United States Department of the Interior
National Park Service**

**National Register of Historic Places
Continuation Sheet**

Section number 8 Page 3

The school board, we say, is cognizant of the situation. It is possible, however, that it may hesitate to act because of the district's financial situation. This is serious enough, but its existence cannot avoid the necessity for a new building. From now until the next fall term there is none too much time to go through the necessary legal preliminaries, to sell bonds, to approve plans, let contracts and build the new school. The undertaking should begin at once.

By October 1923, definite steps were being taken toward a new Bend High School building. The first step taken by the school board was when it instructed its building committee to accept the Bend Amateur Athletic Club building from the Bend Holding Company. The building was being used for seventh and eighth grade classrooms and as a gymnasium under a lease agreement. The board decided that the building would fill the need for a gymnasium for the proposed high school to be built on a tract of land near the building.

The second step was the acceptance of a petition calling for the creation of a union high school district. The petition was forwarded to the district boundary board. It called for consolidation of Bend District No. 1 and the Brooks-Scanlon District No. 37. The union high school district was approved by a vote of 392 to 45 January 4, 1924 and was formally created as Union School District No. 2 of Deschutes County by the district boundary board January 9, 1924.

By a vote of 128 to 112, a \$209,000 bond issue for the purchase of grounds and construction of a high school building adjacent to the Bend Amateur Athletic Club building was approved February 9, 1924. Bid proposals had already been advertised with project completion scheduled for September 1, 1924. Construction did not begin, however, until Fall of 1924. School opened September 7, 1925. Sixty-nine (69) seniors graduated May 28, 1926.

Project contractors included Hugh Thompson, architect; E.P. Brosterhous, primary contractor; Robert B. Gould, engineer; Carlson & Lyons, plumbing; and Finnegan Brothers, heating equipment. Total cost was \$275,000, exceeding the \$209,000 bond issue. A central heating system provided heat to the

United States Department of the Interior
National Park Service

National Register of Historic Places
Continuation Sheet

Section number 8 Page 4

high school, the Bend Amateur Athletic Club (gymnasium) and the Reid School.

Beautification of the campus was begun in July 1926. The space north of the building was sown with grass and a sprinkling system installed. A fountain, bequeathed by the first graduating class, was placed in the center of the grass plot. An enhancing feature, it consisted of an octagonal bowl ten feet in diameter, with the fountain proper to the center. Other features included tennis courts, a playground area for athletic events, and curving walks running from the front of the building to Wall and Bond streets. John Dubuis constructed the tennis courts and the lawn irrigation system.

By September of 1930, the Bend school system was recognized as the City's second largest industry, behind lumber and wood products. Seventy-eight (78) teachers and principals received \$112,668.75 in wages and salaries. Enrollment continued to exhibit an upward trend. Nineteen (19) more high school students than the previous year were enrolled in 1930.

By 1950 the call for a new high school was renewed. The Bend Bulletin editorialized March 25, 1950:

Four years from now Bend's high school will be crowded. By then the record elementary enrollments of post-war years will be high school enrollment.

Since the war the school district has been bulding steadily to keep abreast of grade housing needs. In this period, high birth rates were early evidenced in unusually large primary admissions. As the members of each first grade advanced, as many or more appeared to jam the newly vacated rooms. The high birth rate continued after the war. Many new families took up residence in Bend. To meet the space problem, the district tried double shifting. It was unsatisfactory and the construction race started. To date twenty-one new rooms have been placed in service. More are to be built this year. Still more will be built in each of the succeeding years.

United States Department of the Interior
National Park Service

National Register of Historic Places
Continuation Sheet

Section number 8 Page 5

In the meantime, the first of the out-sized primary sections has reached the entering grade in the five-year high school. Larger classes are behind it. By the school year of 1952-53, high school enrollment will have swelled from the present 820 to 998, if we project the elementary enrollment figures. That is when the situation will be getting critical. It will become progressively worse. By the time the last of the birth statistics now available have been translated into high school registration, enrollment in the top five grades will have climbed to a 1,528 peak. That will be in 1959-1960.

On September 10, 1956, the doors to a new \$1,178,971 high school facility on northeast Sixth Street were opened to the 47th class of Bend High School students. The school was designed to have classrooms added at minimum cost. Approximately 93,000 square feet included classrooms, library, auditorium, gymnasium, offices and storage space. The old building was full of junior high students the following year. It was given the name "Cascade". In 1979, the building was abandoned as a junior high as faculty and students moved to a new building on Bend's westside. Today, the Old High School Building serves as the administrative offices of the Bend-LaPine School District and as kindergarten classrooms.

Type or Style

The building is a conservative but nonetheless locally distinctive example of late Beaux Arts Classicism. It was patterned after English manor houses of the Renaissance and Georgian periods, however freely. Between 1890 and 1915, classicism prevailed in American art. Civic dignity and classical cultural ideals were the heart of the "American Renaissance" movement. The movement embraced all of the arts, particularly the architecture of public buildings. Many university buildings and public schools constructed during the 1920s continued to reflect the values of the "American Renaissance." The Central (Multnomah County) Public Library, designed by A.E. Doyle and completed in 1913, is one of Oregon's best known buildings in the tradition of the "American Renaissance." Its classical archetype was Georgian.

United States Department of the Interior
National Park Service

National Register of Historic Places
Continuation Sheet

Section number 8 Page 6

Characteristics of classical buildings in the American Renaissance spirit: (1) flat roof, sometimes with decorative parapet, sculptural decoration or balustrade; (2) collaboration of architects, craftsmen, artists, and sculptors for sculptural embellishment, relief decoration, window or door treatment, or interior decoration; (3) monumental scale, often with a monumental flight of stairs, a bilateral symmetry with central pavilions and columned porticoes; (4) rectangular windows with keystones or lintels of different material, and sometimes fanlights; grillework often used in smaller windows or as a decorative element; (5) smooth-dressed stone, marble, or brick over a concrete form; (6) archaeological imitation of Greek and Roman architecture as well as Italian, French, and English Renaissance structures.

Elizabethan and Jacobean architects evolved the E-shaped plan. The Hatfield House, Herts, England (1607) displays characteristics of Jacobean architecture similar to the high school building. It is E-shaped in plan, with central hall and projecting wings. The entrance front is of plain brickwork with mullioned windows, relieved by a projecting central entrance; the building is finished by a flat roof and balustrade. The south front includes Doric, Ionic, and Corinthian Orders, mullioned windows and pierced parapet.

The design intent of the Old Bend High School building appears to have been to make a statement that Bend was no longer a developing frontier town but one that had "arrived". Civic dignity and community pride are evidenced by architecture, craftsmanship and materials.

Architect, Engineer, Master Builder.

Hugh M. Thompson was the architect. Thompson was a Bend High graduate and is believed to be the first architect to live and work in Bend. In addition to designing the Bend High School building, his work includes the addition to the Bend Amateur Athletic Club (National Register), the B.A. Stover House (National Register), the Capitol Theatre (not extant), and the first addition to the Pilot Butte Inn (not extant, site in National Register). Thompson also reviewed plans for the Deschutes County Library and, according to one source, prepared new plans. The design of the Library, however, is associated with other architects.

United States Department of the Interior
National Park Service

National Register of Historic Places Continuation Sheet

Section number 8 Page 7

Robert B. Gould was the engineer. Gould, a civil engineer, arrived in Bend in 1910. Gould is best known for his maps of Bend and Deschutes County. He served as the Bend City Engineer (1914-31), surveying numerous parts of the city, including Park Addition for A.M. Drake, founder of Bend. On January 1, 1919, he became Deschutes County Surveyor following the 1918 elections. He reportedly was associated with the Tumalo Irrigation project in 1915, working with John Dubuis who identified errors in the design and construction of the Tumalo Feed Canal and distribution system.

Gould assisted in surveying several townsites, was in Burns when the large Hines plant was planned and was the engineer who surveyed the dam for the Gilchrist operations near Crescent. He placed the first stake for the Brooks-Scanlon main line out of Bend, engineered many miles of logging railway, and, in 1959, was in charge of the survey for the Brooks-Scanlon extension north toward Sisters. He also worked for the State Highway Department for a number of years. Highway projects he worked on were locating sections of the "Central Oregon Highway", including the Burns-Lawen section (1919), the Millican-Hampton section (1921-1922), and the Bend-Crooked River section (1927-1928). He also was responsible for locating and construction of the Tumalo-Sisters section of the "McKenzie-Bend Highway" (date unknown).

On January 30, 1940, the day following Gould's death, The Bend Bulletin editorialized:

Bob Gould was a good engineer. He could not otherwise have given the service he did to those who employed him, the state, Bend and other Central Oregon cities, the county and scores of firms and individuals. He worked hard at the jobs he had to do and he did well. His standards were high. There is hardly a road of major importance in the county that does not have his mark on it. He laid out most of the additions to Bend. He planned and supervised street paving in Bend, Burns and Lakeview. He ran the lines for a good many miles of railroad, his last employment of this nature, just finished, having been on the new Brooks-Scanlon road

United States Department of the Interior
National Park Service

National Register of Historic Places Continuation Sheet

Section number 8 Page 8

toward Sisters. His map of Deschutes County and his various maps of Bend testify to the care, the skill and the accuracy with which he did his work.

Edward P. Brosterhous of Bend was the builder. He was born August 24, 1879 at Winona, Minnesota. Edward and his brother George were building contractors who moved to Bend from Minnesota in 1903. Edward is credited with construction of St. Francis of Assisi Parish Church and School, Bend High School, Kenwood School and addition, Bend's first jail, Sphier Building, J.C. Penney Building, and Reid School. During construction of the Reid School in 1914, George fell from the roof and was killed.

Edward Brosterhous moved to Klamath Falls, Oregon in 1928. He is credited with building a number of schools in the area, including: Conger School, Klamath Union High School Gymnasium, Merrill High School (Merrill, Oregon), Bonanza High School (Bonanza, Oregon), Doris High School (Doris, California), and additions to Altamont and Roosevelt grade schools. The Armory Building, now the Klamath County Museum, was also built by him.

In 1925, the contract for the first addition to the Pilot Butte Inn was awarded to E.P. Brosterhous. Thirty-six rooms were added to the north, along Wall Street, and the lobby and office enlarged when the barber shop was moved to the new addition. At this time, a red tile roof replaced the original shingles and covered the new construction.

Brosterhous was one of 49 Bend residents who signed the Petition for Incorporation of the City of Bend, filed with the Crook County Court on November 26, 1904. North Unit Irrigation Company was incorporated December 12, 1908 by Brosterhous, John W. White and Fred A. Hunnel. He was a committee member credited with the formation of the Bend Fire Department, February 14, 1919, and served as a member of the Second Hose Company. Brosterhous Road, south of Bend, is named for Henry Brosterhous who operated a chicken ranch in the area.

United States Department of the Interior
National Park Service

National Register of Historic Places Continuation Sheet

Section number 8 Page 9

John Dubuis of Bend constructed the tennis courts and installed a "novel sprinkling system" for the lawn. Dubuis was born in Austria in 1885, coming to the United States in 1888 and to Bend in 1909. He engineered the building of the North Canal to the Powell Butte country, put in the Snow Creek Irrigation District in the Plainview area, and engineered the Bend City water system. Dubuis was an "engineer inspector" who worked at Fred Wallace's side when he became Tumalo Irrigation Project Manager in 1915. Dubuis identified numerous errors in the design and construction of the Tumalo Feed Canal and distribution system which had caused several major failures.

United States Department of the Interior
National Park Service

National Register of Historic Places Continuation Sheet

Section number 9 Page 1

BIBLIOGRAPHY - BEND HIGH SCHOOL

"A New High School", The Bend Bulletin, December 4, 1922.

"BHS Dream Comes True", The Bend Bulletin, August 22, 1956.

"Bend High School Cost Is \$275,000 SAY OFFICIALS", The Bend Bulletin, August 5, 1925.

"Bend High School", The Pilot, 1917.

"Board Levy Nearly Same As One Lost", The Bend Bulletin, December 16, 1921.

"Brosterhous Awarded Contract" The Bend Bulletin, August 18, 1923.

"City's Growth Noted In Plea For New High School", The Bend Bulletin, December 16, 1920.

Clark, Rosalind, Architecture Oregon Style: Architecture From 1840 to the 1950s (Portland, Oregon: Professional Book Center, Inc., for the City of Albany, 1983).

Deats, Jerry, A History of Education In the Public Schools of Deschutes County Before 1925, Master Thesis, Eastern Oregon State College, La Grande, Oregon, August 1964.

"Definite Steps Taken Toward B.H.S. Building", The Bend Bulletin, October 18, 1923.

Deschutes County Historical Society, A History of Deschutes Country In Oregon, (Deschutes County Historical Society, Bend, Oregon 1985).

"Directors Formally Take Over New High School", The Bend Bulletin, September 3, 1925.

United States Department of the Interior
National Park Service

National Register of Historic Places Continuation Sheet

Section number 9 Page 2

Fletcher, Sir Banister, History of Architecture: On the Comparative Method, (14th Edition, Charles Scribner's Sons, New York, New York, 1948).

"Give Diplomas To 69 Seniors in B.H.S. Class", The Bend Bulletin, May 29, 1926.

Gribskov, Joyce, Pioneer Spirits of Bend, (Maverick Publications, Bend, Oregon 1980).

"High School Planning", The Bend Bulletin, March 25, 1950.

"New Union High School Completed Today", The Bend Bulletin, July 24, 1925.

"Robert B. Gould", The Bend Bulletin, January 30, 1940.

Robert Gould Employment Record (1919-1939), Oregon State Highway Commission, Department of Transportation, Salem, Oregon.

"School Ground Beautification Made Possible", The Bend Bulletin, July 21, 1926.

"School Gymnasium Now Building Name", The Bend Bulletin, August 31, 1923.

"Schools Rate Next To Top", The Bend Bulletin, September 5, 1930.

Telephone Interview with George Brosterhous, Klamath Falls, Oregon, May 5, 1992.

"The Central Oregon Country No. 101", The Bend Bulletin, Date Unknown. Vertical File, Deschutes County Historical Society, Bend, Oregon.

"Union District Bonds Carried By 16 Majority", The Bend Bulletin, February 11, 1924.

"Union District Is Created By Voters' Action", The Bend Bulletin, January 5, 1924.

"Union High School District Formally Created", The Bend Bulletin, January 10, 1924.

**United States Department of the Interior
National Park Service**

**National Register of Historic Places
Continuation Sheet**

Section number 10 Page 1

Verbal Boundary Description

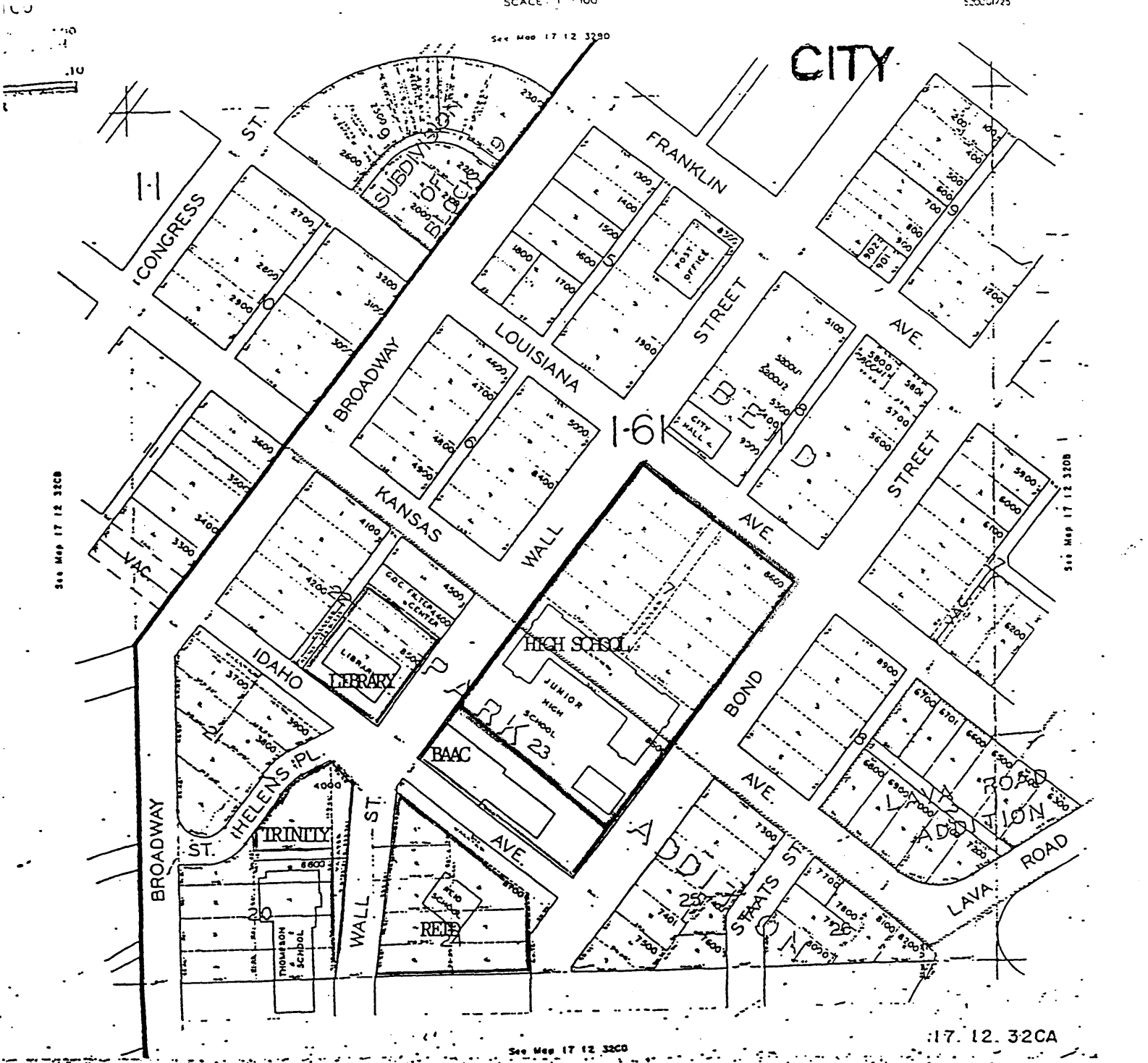
The nominated area is located in NE $\frac{1}{4}$ SW $\frac{1}{4}$ Sec. 32, T.17S., R.12E., Willamette Meridian, in Bend, Deschutes County, Oregon. A portion of Tax Lot 8600 at said location, it encompasses 3.17 acres. The area is legally described as all of Blk 7, Original Plat of Bend, and the north 150 feet of Block 23, Park Addition to Bend, together with the intervening 300 x 60-foot strip of vacated Kansas Avenue.

Boundary Justification

The nominated area is that site which has been occupied by Bend High School from 1925 onward. Offset from the southeast (rear) corner of the former high school is a non-historic maintenance shop of concrete block construction that was built in the 1960s. L-shaped in plan and a single story in height, the building has an overall footprint of 101 x 90 feet. It is counted a non-contributing feature of the nominated area.

See Map 17 12 32B

CITY



See Map 17 12 32CB

See Map 17 12 32DB

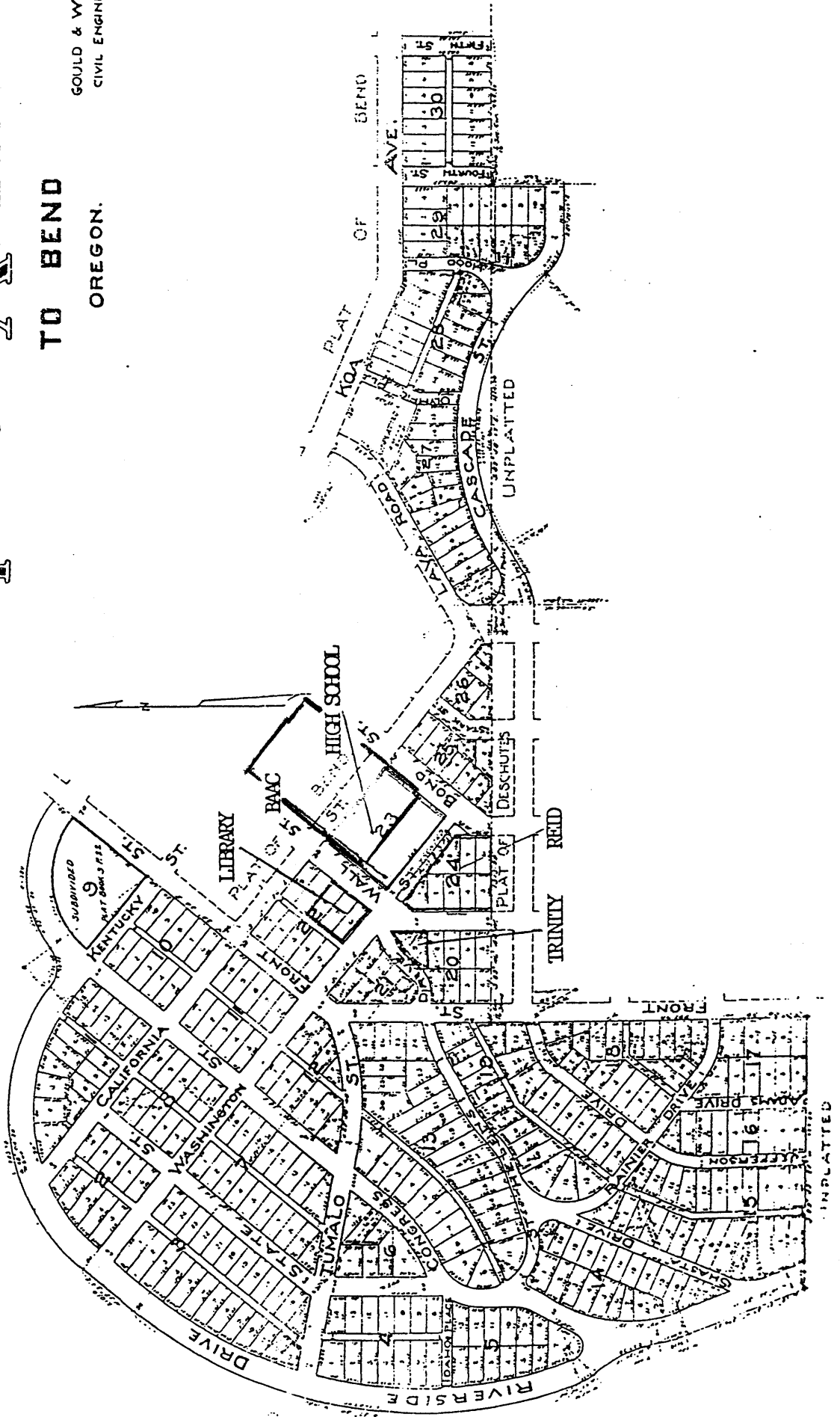
See Map 17 12 32CB

17.12.32CA

PARK ADDITION TO BEND

OREGON.

GOULD & WARD
CIVIL ENGINEERS

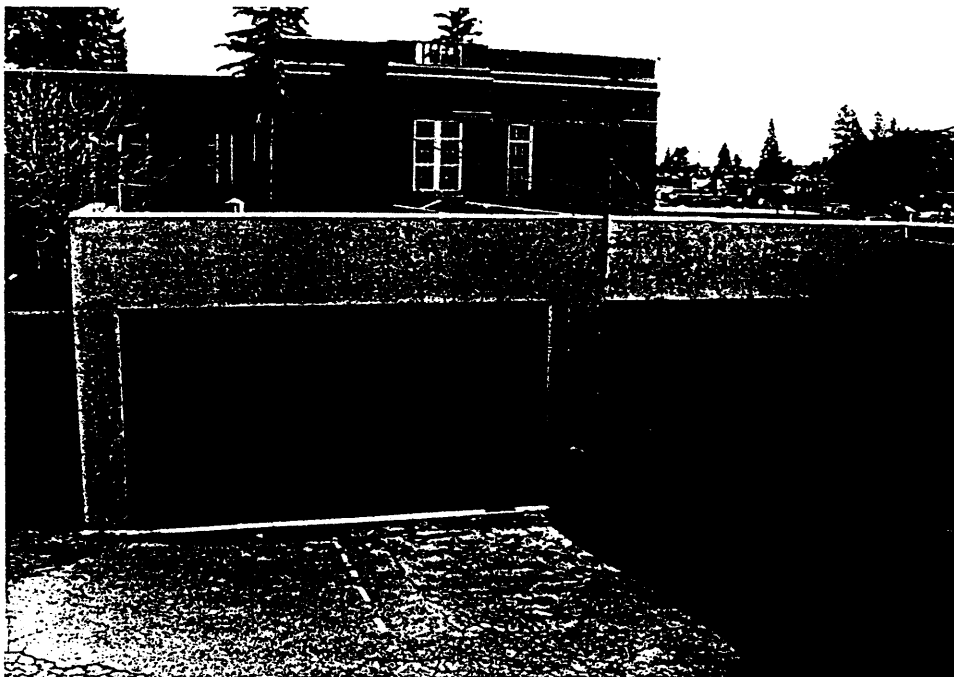


PHOTOGRAPHS OF THE SUBJECT PROPERTY
BEND AMATEUR ATHLETIC CLUB PROPERTY
WALL STREET AND IDAHO AVENUE, BEND, OREGON

PHOTO DISPLAYS THE DETACHED CONCRETE BLOCK SHOP BUILDING
LOCATED ON THE SUBJECT PROPERTY
NOTE FUEL DISTRIBUTION PUMP



PHOTO DISPLAYS OVERHEAD TRUCK DOOR LOCATED IN THE CONCRETE
BLOCK SHOP BUILDING





Bend High School

Historic View, c. 1900

Front Entrance Facing North

HISTORIC DEVELOPMENT OF THE BEND COMPANY MPS
BEND, DESCHUTES COUNTY, OREGON

MICHAEL WALL COPY NEGATIVE
DESCHUTES HISTORICAL CENTER
BEND, OR 97701



2 OF 10

Bend High School

Historic View, c. 1925

Side & Rear View

HISTORIC DEVELOPMENT OF THE BAND COMPANYY MAS
BAND, DASCHUTAS COUNTY, OREGON

MICHAEL HALL COPY NEGATIVE
DASCHUTAS HISTORICAL CENTER
BAND, ON 97701



30F10

Bend High School

Historic View, c. 1930

Entrance

HISTORIC DEVELOPMENT OF THE BEND COMPANY MPS
BAND, DESCHUTES COUNTY, OREGON
MICHAEL HALL. COPY NEGATIVE
DESCHUTES HISTORICAL CENTER
BAND ON 97751

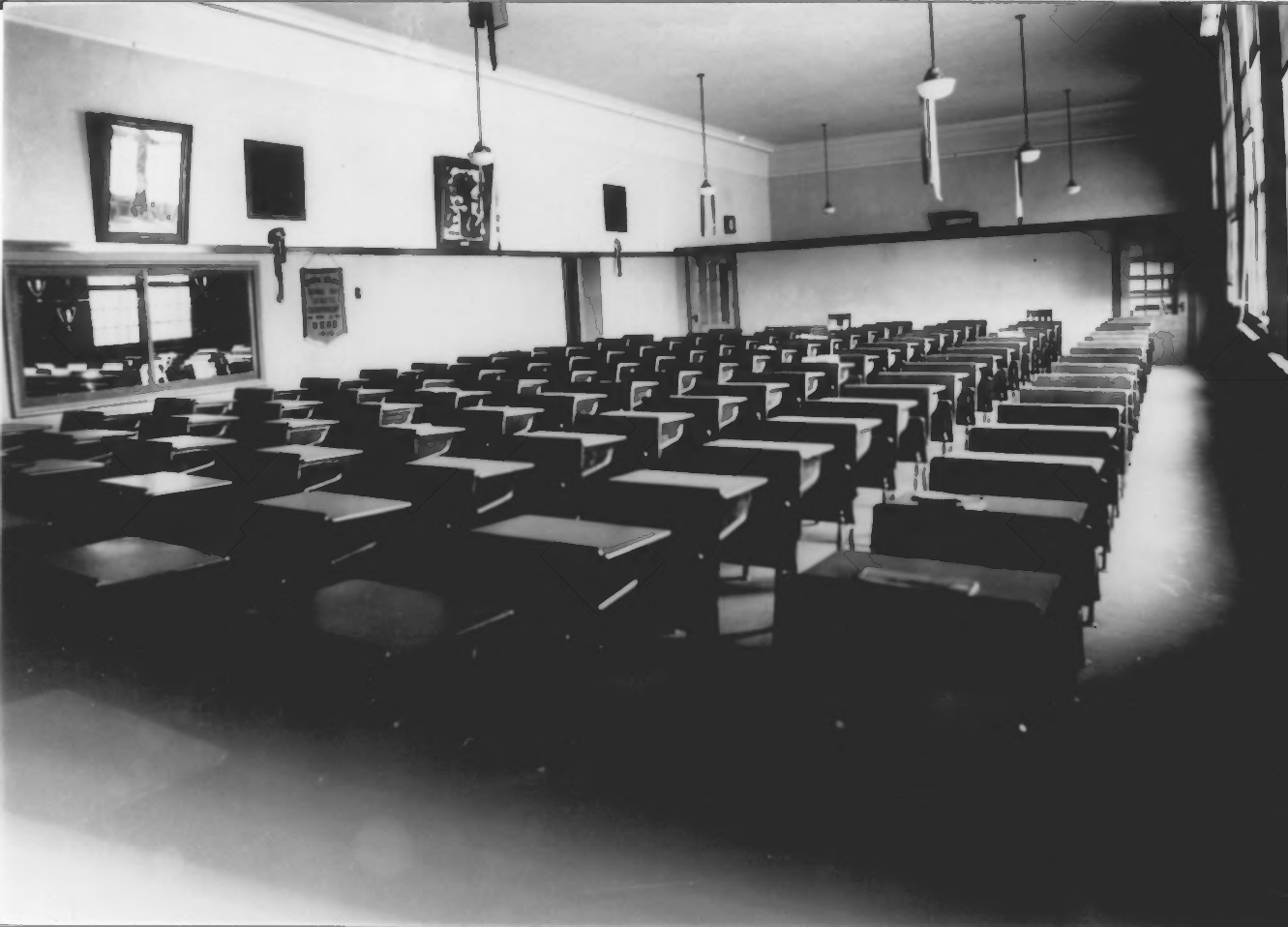


4.07.10

Bend High School
Historic View, c. 1925

Side entrance

HISTORIC DEVELOPMENT OF THE BAND COMPANY MPS
BAND, DESCHUTES COUNTY, OREGON
MICHAEL HALL COPY NARRATIVE
DESCHUTES HISTORICAL CENTER
BAND OR 97701



50710

Bend High School

Historic View, c. 1925

Interview

HISTORIC DEVELOPMENT OF THE BAND COMPANY MPS
BAND, DESCHUTES COUNTY, OREGON

MICHAEL HALL COPY, NEGATIVE

DESCHUTES HISTORICAL CENTRAL
BAND OR. 97701



6 OF 10

Bend High School 1992

Front Entrance

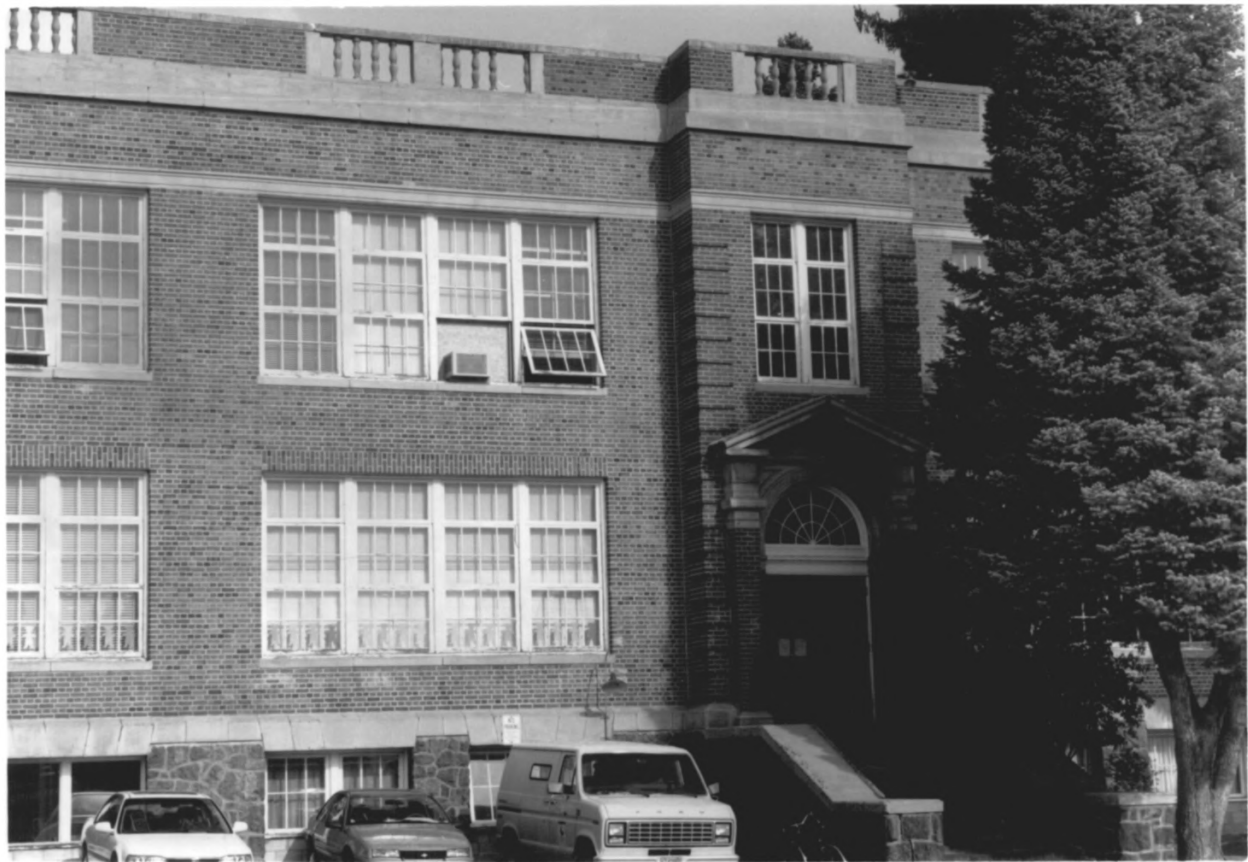
HISTORIC DEVELOPMENT OF THE BEND COMPANY MPS
BEND, DESCHUTES COUNTY, OREGON

MICHAEL HALL

PHOTO

DESCHUTES HISTORICAL CENTER

BEND OR 97701



7 OF 10

HISTORIC DEVELOPMENT OF THE BAND COMPANY MPS
BAND, DESCHUTES COUNTY, OREGON

MICHAEL HALL PHOTO
DESCHUTES HISTORICAL CENTER
BAND OR 97701

Bend High School

1992

Side Entrance



8 OF 10

Bend High School 1992

Side Entrance

HISTORIC DEVELOPMENT OF THE BAND COMPANY MPS
BEND, DESCHUTES COUNTY, OREGON

MICHAEL HALL PHOTO

DESCHUTES HISTORICAL CENTER

BEND OR 97701



90710

Bend High School 1992

Front Entrance

HISTORIC DEVELOPMENT OF THE BEND COMPANY MPS
BEND, DESCHUTES COUNTY, OREGON

MICHAEL HALL PHOTO

DESCHUTES HISTORICAL CENTER
BEND OR 97701



10 OF 10

Band High School 1992

FRONT / NORTH

HISTORIC DEVELOPMENT OF THE BEND COMPANY MPS
BAND, DESCHUTES COUNTY, OREGON

MICHAEL WALL PHOTO

DESCHUTES HISTORICAL CENTER
BEND, OR 97701