

1544

United States Department of the Interior National Park Service

National Register of Historic Places Registration Form



NATIONAL REGISTER

This form is for use in nominating or requesting determinations of eligibility for individual properties or districts. See instructions in Guidelines for Completing National Register Forms (National Register Bulletin 16). Complete each item by marking "x" in the appropriate box or by entering the requested information. If an item does not apply to the property being documented, enter "N/A" for "not applicable." For functions, styles, materials, and areas of significance, enter only the categories and subcategories listed in the instructions. For additional space use continuation sheets (Form 10-900a). Type all entries.

1. Name of Property

historic name Gamma Phi Beta Sorority House
other names/site number

2. Location

street & number 1021 Hilyard St.
city, town Eugene
state Oregon code OR county Lane code 039 zip code 97401
not for publication
vicinity

3. Classification

Table with 3 columns: Ownership of Property, Category of Property, and Number of Resources within Property. Includes checkboxes for private/public ownership and building/site/structure/object categories.

Name of related multiple property listing: Eugene West University Neighborhood Historic and Architectural Resources MPS

Number of contributing resources previously listed in the National Register N/A

4. State/Federal Agency Certification

As the designated authority under the National Historic Preservation Act of 1966, as amended, I hereby certify that this nomination request for determination of eligibility meets the documentation standards for registering properties in the National Register of Historic Places and meets the procedural and professional requirements set forth in 36 CFR Part 60. In my opinion, the property meets does not meet the National Register criteria. See continuation sheet.
Signature of certifying official: [Signature]
Date: September 1, 1991
Oregon State Historic Preservation Office

In my opinion, the property meets does not meet the National Register criteria. See continuation sheet.
Signature of commenting or other official
Date
State or Federal agency and bureau

5. National Park Service Certification

I, hereby, certify that this property is:
[checked] entered in the National Register.
[ ] See continuation sheet.
[ ] determined eligible for the National Register. [ ] See continuation sheet.
[ ] determined not eligible for the National Register.
[ ] removed from the National Register.
[ ] other, (explain):

for Signature of the Keeper Date of Action

---

**6. Function or Use**

---

Historic Functions (enter categories from instructions)

Education-related housing: sorority  
house (club/ lodge)  

---

---

Current Functions (enter categories from instructions)

Education-related housing: sorority  
house (club/ lodge)  

---

---

---

**7. Description**

---

Architectural Classification

(enter categories from instructions)

Late 19th and 20th Century Revivals:  
Tudor Revival  

---

---

Materials (enter categories from instructions)

foundation concrete  
walls brick  
stucco  
roof wood: shingle  
other   

---

---

---

Describe present and historic physical appearance.

United States Department of the Interior  
National Park ServiceNational Register of Historic Places  
Continuation SheetSection number 7 Page 2

The Gamma Phi Beta, located Block 2, Lots 8 through 10, Tax Lot 2800 of Peterson's Addition, was begun in 1925 and completed in 1926. It is located adjacent to the Millrace on the north side. From 1925 to the present, the building served as the Gamma Phi Beta sorority. The Tudor style building is virtually intact and has a 1959 addition on the rear elevation which is compatible with the original design.

The architects were Hunzicker and Gerow of Eugene, Oregon. The house was built by the local construction firm of Hargreaves and Lindsay, at a projected cost of \$40,000. Hargreaves and Lindsay operated as a contracting firm in the Eugene area from 1925 to around 1930.

The house is an example of historic period Tudor style architecture. It consists of a light wood frame structure with a full daylight basement of poured concrete. The first story exterior has a veneer of rug brick with stucco, over a portion of the north elevation (rear) which faces onto an alley. The upper one-and-a-half story exterior walls are stuccoed over a light wood frame with applied Tudor style imitation half timber. There is an ornate octagonal tower over the entrance hall, which is framed by a Tudor arch of cast stone. A large covered terrace across the south facade, faces the Millrace. The approximate total area of the house is 8,000 square feet. The basement provides space for laundry facilities, meeting rooms and storage. The first floor contains an octagonal entrance hall, double living room, library, office, display hall, gallery, kitchen, dining room, and food storage area. The living room and the parlor both have working fireplaces. The second floor contains study/sleep rooms, a sleeping porch in the octagonal tower, and a small living room. The third floor contains additional study/sleep space, including the top level of the octagonal tower.

The exterior historic fabric of the house is nearly intact, except for changes and additions in 1947 and 1959. A fire occurred on the third floor in 1926 (Lydia Neill, Matthew Reckard, p. 2). In 1947, the original sleeping porch was divided into separate areas as part of a renovation by John Stafford, a local Eugene architect, son of Elizabeth Straub Stafford and grandson of John Straub (Interview, John & Jonathan Stafford, Architects).

Although a major addition was made to the northern part of the structure in 1959, the house retains its original character and is in good condition. The 1959 addition, also designed by John Stafford, consists of a new two story wing with a basement. A bay window on the building's east side was removed and replaced with a large rear dining room. There is a terrace that parallels the length of the gallery.

United States Department of the Interior  
National Park ServiceNational Register of Historic Places  
Continuation SheetSection number 7 Page 3

## SETTING

The Gamma Phi Beta Tudor-style sorority house is located on the north side of the Millrace, east of Hilyard Street, between Franklin Avenue and 11th Avenue, in the middle of the block. This is a mixed use area: one block north of Sacred Heart Hospital, one block northwest of northwest Christian college, and two blocks northwest of the University of Oregon. This sorority is one of several Greek houses in the immediate vicinity, and is included in the Millrace and fraternity and sorority thematic groupings. The house is oriented towards the bridge that crosses the Millrace on Hilyard Street. A direct path leads from the sidewalk, bisecting the lawn, to the front steps. There is a boat landing and lawns that extend to the edge of the channel. A massive octagonal tower rises behind the entrance porch, with open terraces on each side. These terraces, which are made of brick, have cast stone balustrades carved in a design that mirrors the timbering pattern on the upper stories of the building. The exterior wall surface of these terraces is made of a combination of brick veneer and stucco with wood. The brick pattern is in running bond. A false spire has recently been removed from the west side of the entrance, leaving a large companion Port Orford cedar just south of the entrance on the front lawn towards the Millrace. Mature evergreen foundation plantings enhance the south facade, while a large Big Leaf maple and willow tree face the Millrace on the east side of the house. There are brick steps leading from a south-facing terrace directly to the Millrace. The 1959 addition reproduced south-facing exterior design elements that respond well to the original house.

## PLAN

This two and one half story house with a full daylight basement is a T-shaped plan on a concrete foundation. The main volume of the building is roughly rectangular, but the various functional areas are expressed as separate blocks.

The living room and library are positioned to create a diagonal east-west axis through the octagonal entrance hall. These public rooms do not have any doors to block the views from the hall, in four directions: to living room, library, offices, main staircase and display hall. A rectangular-shaped wing off of the northwest side of the main volume accommodates the service area. The 1959 addition forms a large rectangular extension west of the service area. The complex roof is a combination of gable and hip forms, and is covered with composition shingles. The octagonal tower over the main entrance has a conical roof. The windows are wood, 6/6 or 8/8 double hung.

United States Department of the Interior  
National Park Service

National Register of Historic Places  
Continuation Sheet

Section number 7 Page 4

---

EXTERIOR

The exterior of the Gamma Phi Beta house is covered with brick veneer stucco and half-timbering. The windows are multi-pane double-hung, and have wood frames. The stucco is white while the woodwork is stained a dark brown.

Front Elevation

The two and one-half story front elevation rises up on either side of the entrance block. The entrance block is composed of the covered porch surrounding the front door and the three-story octagonal tower. At the first upper level (second story) of the tower seven arcaded windows look down on the terraces along the front facade. Above these windows is a decorative section of stucco and half-timbering. The third story of the tower has six smaller windows set in dark wood frames. The exterior of the first floor is covered with stucco, wood and brick accents in Tudor style patterns, broken by the brick and cast stone mass of the entrance porch. The second story has distinct wood and stucco geometric patterns on both sides of the arcaded tower windows.

The front southwest facade of the main volume consists of three sections: the tower, the north-south wing and the intersecting east-west section. The north-south wing and the east-west wing project slightly over the first floor. There is a dark painted fire escape at roof level on this side, which is not original to the building. A window is to the west side of the entrance. The entrance porch has a steeply pitched gable roof. The cast stone Tudor arch and quoins frame the opening.

The interior of the porch is a gabled space. The walls are brick veneer. The roof has decorative wood roof "beams" with white stucco between. On each side of the doorway are incised arched niches with decorative wood trim, consisting of wood pilasters and arch. Decorative keystone and side voussoirs are of cast stone.

The original tower, which contains the entrance hall, is set behind the entrance porch and rises above it. In the tower are double hung windows placed between panels. Decorative geometrical insets are below these windows. The steeply main building volume, parallel to Hilyard, contains a dormer with three windows. This wing, which is oriented north to south, rises higher than the wing parallel to 11th Street.

United States Department of the Interior  
National Park Service

National Register of Historic Places  
Continuation Sheet

Section number 7 Page 5

---

West Elevation

The west elevation faces Hilyard street. It contains the projecting library wing with its fireplace wall, which is brick with a cast stone medallion in the center featuring the Greek letters for the Gamma Phi Delta sorority. The steep gable end of this wing contains vertical panels of alternating stucco and timber on either side of the chimney. The remaining section of the facade contains multi-paned double hung windows. The steeply pitched gable roof drops to just above the level of the second story windows, which are placed in two sets of two, as in the front facade.

South Elevation

The south elevation, facing the Millrace, includes a brick fireplace with French doors on either side that open out to a brick terrace on the main floor. A second story porch provides a roof over the main floor terrace. There is one wide window on either side of French doors which flank the second story fireplace. This window replaced French doors which originally opened onto the porch. A fire escape which dates from the mid-1930s, appears at this level. The third story contains four windows, three on the west side of the fireplace and one on the east side. This was the sleeping porch that was converted into separate study/sleep quarters. The hip roof on this facade also contains a dormer with three widows. A wide border decorative geometrical insets above the third story windows is similar to those on the front facade.

East Elevation

The east elevation corresponds to the portion of the house which was remodeled n 1959. The east elevation is composed of the east end of the double living room and the added gallery with its brick terrace. This terrace had brick steps leading down to the lawn, and a path to the rear of the house. At the second story level are windows interspersed with decorative stucco and timber panels, similar to those on the front facade. A cast stone balustrade mirrors the geometric design of the front balustrade. The Tudor motif continues on the upper stories of the addition on this southeast side, interspersed between the windows of a large sleeping porch. The main floor of the addition contains the large dining room. It has double-hung windows at regular intervals in the stucco face on the south and north sides.

North Elevation

The rear elevation of the main volume faces north, and contains the service wing. This elevation was remodeled in 1959 (Interview, John & Jonathan Stafford, Architects). The first floor has a brick veneer, while the second is of stucco and wood. The central service porch housing kitchen and hallway is of stucco at both levels. The service entrance is reached by a short flight of concrete steps. A fire escape descends from the third floor to the ground level.

United States Department of the Interior  
National Park ServiceNational Register of Historic Places  
Continuation SheetSection number 7 Page 6

## EXTERIOR ALTERATIONS

The exterior alterations consist of the 1959 addition, which removed a bay window from the dining room wall, on the east side of the main floor of the house, and replaced it with a long gallery with French doors that open onto a terrace. The addition of the new dining room intersected the original house at the northeast corner of the gallery. At this time the terrace with steps down to the east lawn was added. This addition rises two stories and contains interior bathrooms and a sleeping porch above the dining room. These alterations were designed by John Stafford of Eugene, and are very compatible with the historic exterior on the rest of the building (Interview, John & Jonathan Stafford, Architects). Mechanical and electrical renovations, designed by CH2M of Corvallis, were made at the same time (Lydia Neill, Matthew Reckard, p. 2). The 1959 addition caused alterations to be made in the original dining room, which created a passageway to the gallery. The kitchen was also altered and expanded to encompass part of the original dining room, and to join with the new dining room. A south-facing sleeping porch in the original wing above the living room was enclosed to make separate sleep/study rooms on the third floor. Two sets of French doors were removed from the second floor south-facing lounge in this same block, and replaced with windows (Interview, Nancy Renton, November, 1990).

## INTERIOR

The original floor plan is intact on the first floor (living room, library, entrance hall, service rooms) with the exception of the original dining room, which was eliminated in 1959. These alterations created a display hall leading to the new gallery wing. The balance of the dining room space was absorbed by the kitchen expansion. The kitchen and service area have been extensively remodeled, and the eastern wing of the dining room is part of the 1959 addition (Interviews, Nancy Renton & John Stafford, November, 1990).

The sleep/study rooms on the second story are in their original plan. The tower room on both second and third levels retains the octagonal shape. On the third story the conical wood rafters are exposed to the top of the dome interior, with a modern light fixture hanging from the center support.

Some of the interior design features originally found in the house have been painted or stuccoed over, and are no longer visible. On the first floor there is painted trim around the fireplaces, wall and ceiling moldings, door frames, and staircase. White painted decorative wood brackets are mounted on either side of each of the fireplaces in the living room and the parlor above narrow white painted mantels. The fireplace in the living room has a stone frame surrounding the hearth opening. The fireplace in the parlor has a painted panel above the painted brick soldiers of the face. The entrance hall has decorative trim pieces curving upward to a central pendant defining each section of the octagon. This wood is painted in a dark color. The newel post of the main staircase has ornate carved patterns on three sides and is painted white as are the stringers of the staircase up

United States Department of the Interior  
National Park Service

## National Register of Historic Places Continuation Sheet

Section number 7 Page 7

---

to the second story. The stair railing is stained dark wood. From the second story to the third story all of the staircase elements are entirely stained dark wood. The remaining dark woodwork in the house is in the interior framing of the octagonal roof on the third floor and the window framing in the tower study/sleep areas on the second and third stories. The kitchen bathrooms have been completely remodeled.

### CHAIN OF TITLE

Gamma Phi Beta bought the land from Caroline Unander in 1925 and has owned the building to the present.

**8. Statement of Significance**

Certifying official has considered the significance of this property in relation to other properties:

nationally     statewide     locally

Applicable National Register Criteria     A     B     C     D

Criteria Considerations (Exceptions)     A     B     C     D     E     F     G

Areas of Significance (enter categories from instructions)

Architecture  
\_\_\_\_\_  
\_\_\_\_\_  
\_\_\_\_\_  
\_\_\_\_\_  
\_\_\_\_\_

Period of Significance

1925-1926  
\_\_\_\_\_  
\_\_\_\_\_

Significant Dates

1926  
\_\_\_\_\_  
\_\_\_\_\_

Cultural Affiliation

N/A  
\_\_\_\_\_  
\_\_\_\_\_

Significant Person

N/A  
\_\_\_\_\_

Architect/Builder

John Hunzicker (Hunzicker & Gerow)  
\_\_\_\_\_  
\_\_\_\_\_

State significance of property, and justify criteria, criteria considerations, and areas and periods of significance noted above.

See continuation sheet

**9. Major Bibliographical References**

See continuation sheet

Previous documentation on file (NPS):

- preliminary determination of individual listing (36 CFR 67) has been requested
- previously listed in the National Register
- previously determined eligible by the National Register
- designated a National Historic Landmark
- recorded by Historic American Buildings Survey # \_\_\_\_\_
- recorded by Historic American Engineering Record # \_\_\_\_\_

Primary location of additional data:

- State historic preservation office
- Other State agency
- Federal agency
- Local government
- University
- Other

Specify repository:

City of Eugene Dept. of Planning and Development

**10. Geographical Data**

777 Pearl Street, Eugene OR 97401

Acreeage of property 0.60 acres Eugene East, Oregon 1:24000

UTM References

A 

1	0
---	---

4	9	3	5	5	0
---	---	---	---	---	---

4	8	7	7	0	7	0
---	---	---	---	---	---	---

  
Zone Easting Northing

C 

--	--

--	--	--	--	--	--

--	--	--	--	--	--	--	--

B 

--	--

--	--	--	--	--	--

--	--	--	--	--	--	--	--

  
Zone Easting Northing

D 

--	--

--	--	--	--	--	--

--	--	--	--	--	--	--	--

See continuation sheet

Verbal Boundary Description

The nominated area is located in NW $\frac{1}{4}$  SE $\frac{1}{4}$  Section 32, Township 17S, Range 3W, Willamette Meridian, in the city of Eugene, Lane County, Oregon, and is legally identified as Lots 8, 9 and 10 of Patterson's Addition to the City of Eugene, and is otherwise identified as Tax Lot 2800 at said location.

See continuation sheet

Boundary Justification

The nominated area includes the entire urban tax lot associated with the historic building.

See continuation sheet

**11. Form Prepared By**

name/title Susan Curley, Karin Link and Kimberly Demuth and Kimberly Lakin  
organization Demuth/Glick Consultants for the City of Eugene date January 15, 1991  
street & number 1314 NW Irving, Suite 510 telephone (503) 224-0043  
city or town Portland state Oregon zip code 97209

United States Department of the Interior  
National Park Service

National Register of Historic Places  
Continuation Sheet

Section number 8 Page 2

---

The Tudor style Gamma Phi Beta Sorority, constructed 1926, is architecturally under criterion c as an example of the Club/Lodge property type within the West University Neighborhood. There are seventeen resources identified as this property type in the "West University Neighborhood Cultural Resources Survey". There are four Tudor style buildings within this property type. The building is notable for its integrity, distinction, and associative value and meets registration requirements for the National Register of Historic Places as identified in the "West University Neighborhood Cultural Resources Survey".

The property is virtually intact as it was built in 1926, with the exception of a compatible addition to the rear elevation. The Gamma Phi Beta is an excellent example of the English Tudor historic period style. Significant design features include: extensive use of imitation half timbering, octagonal tower, and cast stone decoration.

HUNZICKER AND GEROW

According to the Eugene Register-Guard, the Gamma Phi Beta was designed by Theodore M. Gerow of the Eugene firm of Hunzicker and Gerow. The two became partners in October of 1924. This partnership only lasted through 1925, dissolving before the completion of the Gamma Phi Beta Sorority.

GAMMA PHI BETA

Gamma Phi Beta was founded at Syracuse University in New York State November 11, 1874. It was the first national sorority to be chartered in the State of Oregon, in October 1906 (Interview, John & Jonathan Stafford, Architects, November, 1990). Elizabeth Straub Stafford, one of its first members, was instrumental in founding this chapter. She was the daughter of John Straub, Dean of Men Students at the University of Oregon during the beginning of the century, and after whom Straub Hall is named (Telephone interview, Nancy Renton, November, 1990). Also associated with this chapter of the sorority is Dr. Collier, who was important in the suffrage movement in New York City in the 1920s and was a member of the Collier family, very prominent in Eugene during this period (Interview, Nancy Renton, November, 1990). The land upon which the house was built was donated by the Portland tycoon, Simon Benson, who had also built the Benson Hotel in Portland, and whose daughter was a Gamma Phi (Telephone interview, Trudi Diffendafer, December, 1990). The house was designed with study space for thirty-eight students and sleeping space for twenty-two (John Stafford, As-Built Drawings showing house prior to 1947 renovation, notes).

United States Department of the Interior  
National Park Service

## National Register of Historic Places Continuation Sheet

Section number 9 Page 2

---

### Bibliography

Lakin, Kimberly. The Life and Work of John Hunzicker, Architect (1867-1945). A master's thesis. 1982.

Neill, Lydia and Matthew Reckard. "Masonry Condition Survey, Gamma Phi Beta House". Research paper. 1989.

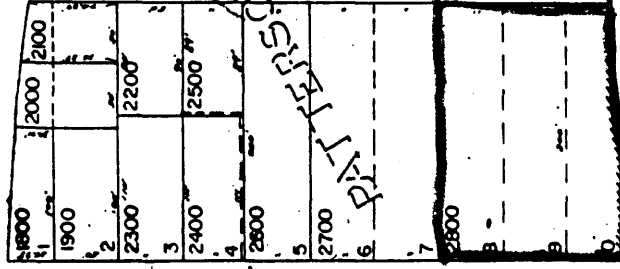
Oregana. University of Oregon. Eugene, Oregon. 1925-32.

Planning Department, City of Eugene and Land and Community Associates. "West University Neighborhood Cultural Resources Survey". Eugene, Oregon. August 1987.

Ticor Title Company Records. Eugene, Oregon.

Map: 17 03 32 24

9th AVE. EAST BROADWAY



ALLEN ADDITION

STREET

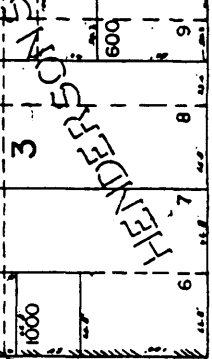
BLVD.

MILL

RACE

004-00

ALDER



HENDERSON

STREET

KINCAID

U.S. HIGHWAY

99

ADDITION

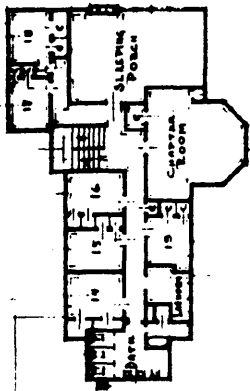
11th

HILYARD

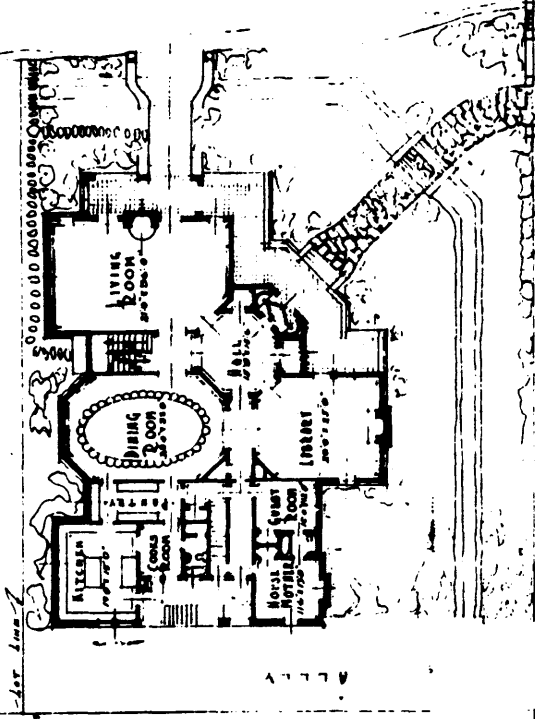
AVENUE E

Cent Sec.



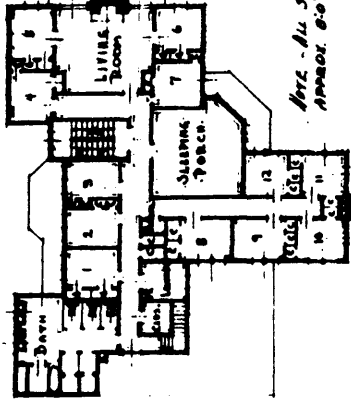


• THIRD FLOOR •



• MILYARD STREET •

• FIRST FLOOR •  
SCALE 1/16" = 1'-0"

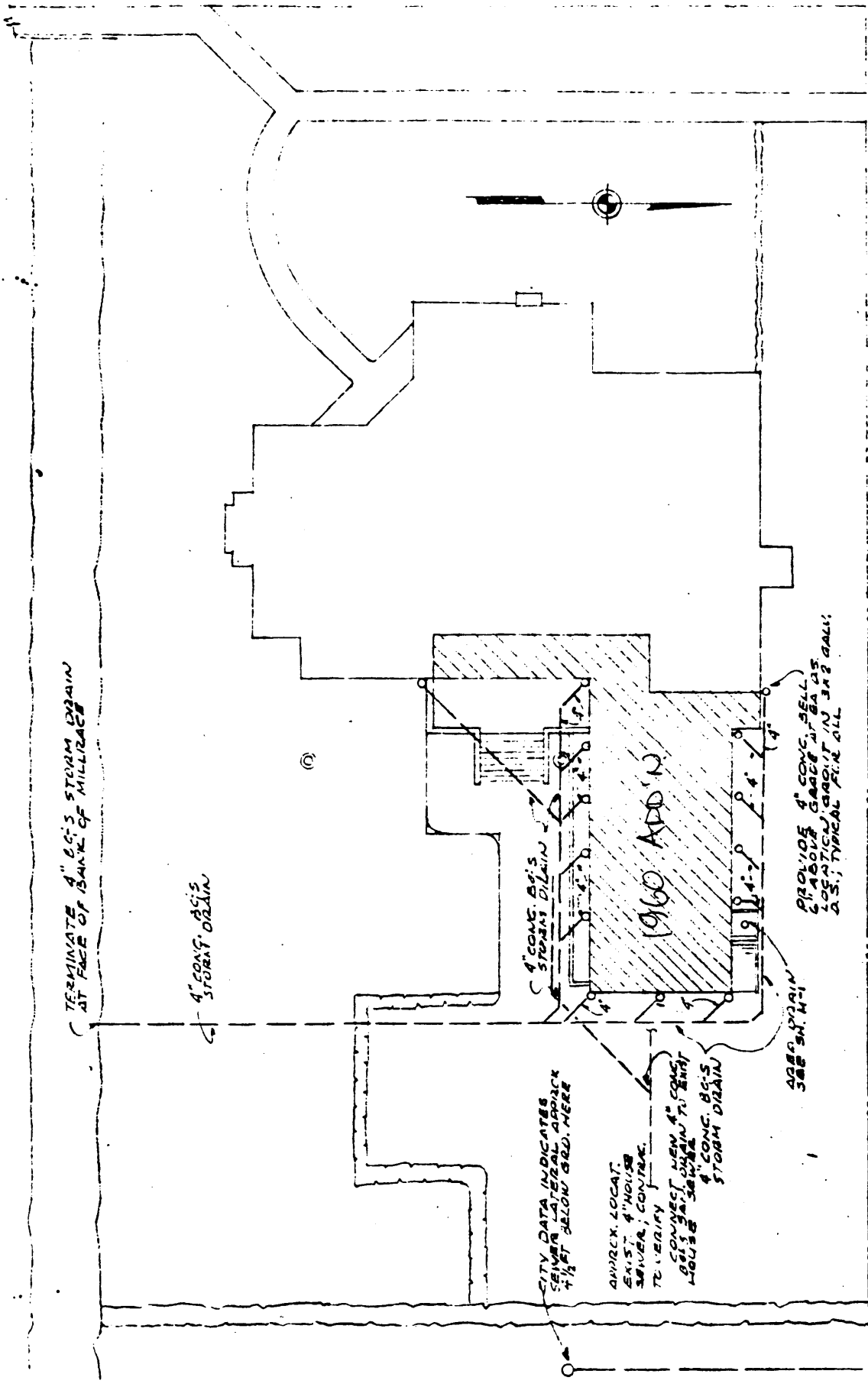


• SECOND FLOOR •

• GAMMA • PHI • BETA • SORORITY • HOUSE •  
EUGENE OREGON

• JOHN HOFFICKER & F. M. GERON •  
• ARCHITECTS •  
• EUGENE • OREGON •

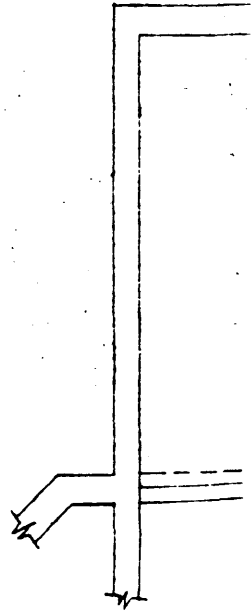




P L O T P L A N

1/8" = 1'-0"

VONN  
STAFFORD, INCH



PROFESSOR

CURR. HIST. STATUS:

RANKING: Contributing  
NEIGHBORHOOD: WUN 1  
TYPE: Building

OREGON CULTURAL RESOURCE INVENTORY  
CITY OF EUGENE

FINAN. STATUS:

HISTORIC NAME: GAMMA PHI BETA SORORITY      DATE OF CONSTRUCTION: 1935  
COMMON NAME:      ORIGINAL USE: Club/Lodge  
ADDRESS: 1021      HILYARD      ST      PRESENT USE: Club/Lodge  
EARLY AD: 0      DATE:  
OWNER: Virginia Farkas      ARCH./BLDR.: /Hargreaves & Lindsay  
ADDR: 4080 Pearl      ARCH./STYLE: Tudor  
         Eugene, Oregon 97405  
T/R/S# 17 3 32 NW 1/4 SE 1/4      INTEGRITY: Minor Modifications  
MAP NO.: 17033224      TAXLOT: 2800      THEME: 010  
ADD: Patterson's      BLK:      LOT: 8-10      PROP. GROUP MILLR /TH/006  
ZONING: R4SR

PLAN SHAPE: "T" shaped      #STORIES: 2.5 BASEMENT (Y/N/?): Y  
FOUNDATION MATERIAL: Concrete wall  
ROOF FORM & MATERIALS: Gable w/hip dormers, conical tower roof  
WALL CONSTRUCTION: Brick veneer & wood stud      STRUCTURAL FRAME: Light wood frame  
PRIMARY WINDOW TYPE: Wood double hung 6/6, 8/8  
EXT. SURFACING MATERIALS: 1-fl.-brk. 2&3 fl.stucco w/wd. 1/2 timber trim  
DECORATIVE FEATURES: 3 story octagonal tower over front ornate brick entry  
OTHER: sorority seal in west facade  
CONDITION: Excellent      MOVED: N      DATE MOVED:

EXT. ALTERATIONS/ADDITIONS(DATED): 2 story wing to rear

NOTEWORTHY LANDSCAPE FEATURES: Diag entry, mature evgr fdn pltg & false  
spirea & Port Orford cedar in front; v lg Bglf mpl, brk BBQ, hollies in rear  
ASSOCIATED STRUCTURES: none  
KNOWN ARCHAEOLOGICAL FEATURES: none

GEOG. LOC. & IMMED. SETTING Mid-block fdn gr level 3' above sidewalk, in  
mixed use area, at middle of lot, on busy st. Located in NE section of  
survey area on Millrace; 1 bl N of SHH, 1 bl NW of NWCC, 2 bl NW of UO.  
PHYSICAL DESCRIPTION: This 2.5 sty. Tudor styled sorority hse. is located on  
the back of the lot, mid-block, a flat site on the millrace, facing w. In  
excellent condition, it has minor modifications & is presently Gamma Phi  
Beta sorority. A T-shaped plan on a concr. wall fdn., it has a daylight  
bsmt. The complex roof is a combin. of gable & hip forms covered w/comp.  
shing. Of light wd. framing, the wd. stud walls are surfaced w/brk. veneer  
or stucco w/half timber trim. The wind. are wd. D.H., 8/8 & 6/6. Outst.  
dec. features incl. the 3 sty. octag. tower abv. ornate brk. & stone entry,  
1/2 timber dec. trim, dormers & bays, ornate end wall, chim. to W. A 2 sty.  
wing added to rear. Landsc. features incl. lg. front yd. trees.

SOURCES: Polk 1928-38 146e0121; Korstad 1933-38 146e0075; EDG 146e0122,  
12/31/25 p1; EMR 146e0123, 3/21/26 p3

ROLL NO.: 00  
NEGATIVE NO. 000  
SLIDE ROLL#: 000  
SLIDE NO: 000000

RECORDED BY: O. Gast  
RESEARCHED BY: RZM, KAS, BC, LS  
DATE RECORDED: 1/31/1987  
FIELD INVENTORY NO: 00000  
STATE INVENTORY NO: 4124

OREGON CULTURAL RESOURCE INVENTORY  
CITY OF EUGENE

HISTORIC NAME: GAMMA PHI BETA SORORITY      T/R/S# 17 3 32 NW 1/4 SE 1/4  
ADDRESS: 1021      HILYARD      ST      TAXLOT: 2800

1021 Hilyard was built in 1925. From that date to the at least the end of the historic period it served as Gamma Phi Beta Sorority. It was built by the local construction firm of Hargreaves and Lindsay, at a projected cost of \$40,000. Gamma Phi Beta was the first national sorority to be chartered in the State of Oregon, on December 18, 1908. There was a fire in the third floor in 1926. Repairs were made in 1947. The building is sited along the Millrace, with lawns and a boat landing. This building is included in the Millrace and Fraternity/Sorority thematic groupings. There is a major addition in the rear of this structure, added after 1939.

FIELD SURVEY NO: 00000  
STATE INVENTORY NO: 4124

OREGON CULTURAL RESOURCE INVENTORY  
CITY OF EUGENE

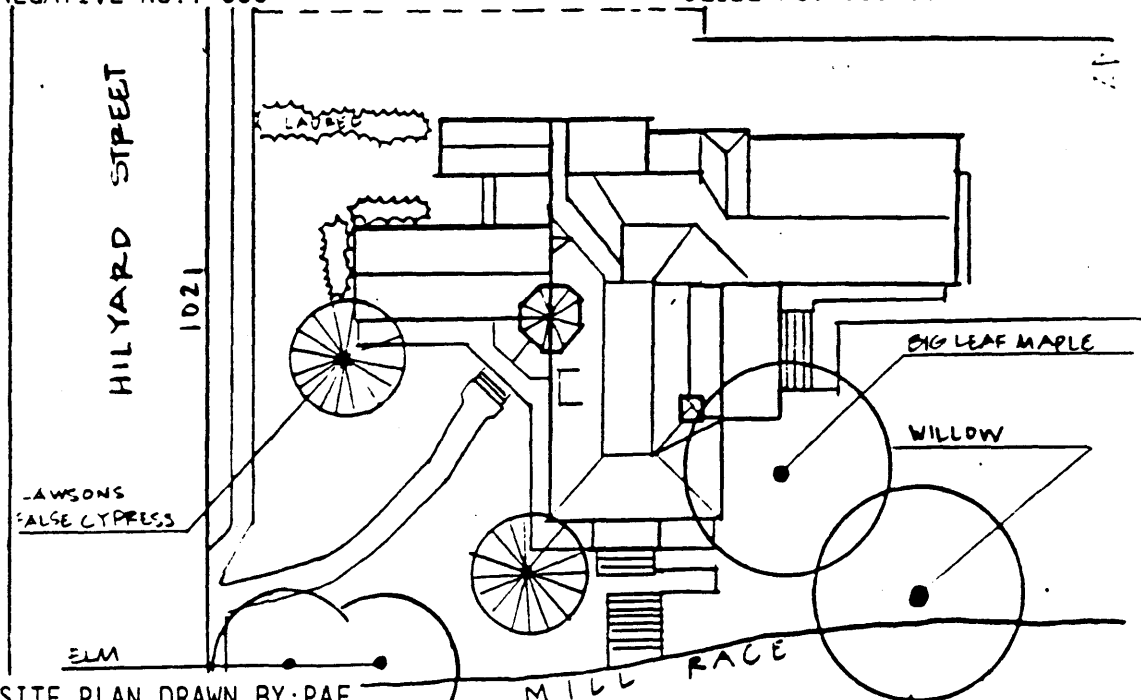
HISTORIC NAME: GAMMA PHI BETA SORORITY  
ADDRESS: 1021 HILYARD

T/R/S# 17 3 32 NW 1/4 SE 1/4  
ST TAXLOT: 2800



ROLL NO: 00  
NEGATIVE NO.: 000

SLIDE ROLL NO: 000  
SLIDE NO. 000000



SITE PLAN DRAWN BY: PAF  
GRAPHIC & PHOTO SOURCES: Army Corps aerial #36-3883, 8/36, UO Map Libr.  
LCM: neg#U6B/L72-293s; Oregana 28-29; UO Archives

FIELD SURVEY NO: 00000  
STATE INVENTORY NO: 4124



- Gamma Phi Beta Sorority, 1021 Hilyard
- Historic and Architectural Resources in the West  
University Neighborhood Multiple Property Nomination
- Eugene, Lane County, Oregon
- K. Demuth
- Jan 1991
- City of Eugene Planning
- looking northeast
- 1 of 10



- Gamma Phi Beta Sorority, 1021 Hilgard Street
- Historic and Architectural Resources in the West  
University Neighborhood Multiple Property Nominations
- Eugene, Lane County, Oregon
- K. Demuth
- Jan. 1991
- City of Eugene Planning
- east facade
- 2 of 10



- Gamma Phi Beta Sorority, 1021 Hilyard Street
- Historic and Architectural Resources in the West  
University Neighborhood Multiple Property Nominations
- Eugene, Lane County, Oregon
- K. Demuth
- Jan. 1991
- City of Eugene Planning
- north facade
- 3 of 10



- Gamma Phi Beta Sorority, 1021 Hillyard
- Historic and Architectural Resources  
in the West University Neighborhood  
Multiple Property Nomination
- Eugene, Lane County, Oregon
- K. Demoth
- Jan 1991
- City of Eugene Planning
- South and West Facades
- 4 of 10



- Gamma Phi Beta Sorority, 1021 Hilgard
- Historic and Architectural Resources  
in the West University Neighborhood  
Multiple Property Nomination
- Eugene, Lane County, Oregon
- K. Demuth
- Jan 1991
- City of Eugene Planning
- entry, looking northeast
- 5 of 9



- Gamma Phi Beta Sorority, 1021 Hilgard
- Historic and Architectural Resources  
in the West University Neighborhood  
Multiple Property Nomination
- Eugene, Lane County, Oregon
- K. Demoth
- Jan. 1991
- City of Eugene Planning
- east facade
- 6 of 10



- Gamma Phi Beta Sorority, 1021 Hilyard Street
- Historic and Architectural Resources in the West University Neighborhood Multiple Property Nomination
- Eugene, Lane County, Oregon
- K. Demuth
- City of Eugene Planning
- interior entry looking southwest
- 7 of 10



- Gamma Phi Beta Sorority, 1021 Hilyard
- Historic and Architectural Resources in the West University Neighborhood: Multiple Property Nominations
- Eugene, Lane County, Oregon
- K. Demuth
- Jan 1991
- City of Eugene Planning
- entry stair looking northeast
- 8 of 10



- Gamma Phi Beta Sorority, 1021 Hilyard Street
- Historic and Architectural Resources in the West University Neighborhood Multiple Property Nomination
- Eugene, Lane County, Oregon
- K. Demuth
- City of Eugene Planning
- interior fireplace looking south
- 9 of 10



- Gamma Phi Beta Sorority, 1021 Hilyard Street
- Historic and Architectural Resources in the West  
University Neighborhood Multiple Property Nomination
- Eugene, Lane County, Oregon
- K. Demuth
- Jan 1991
- City of Eugene Planning
- interior fireplace looking south
- 10 of 10