

Historic
Resource
Inventory
CITY OF PORTLAND, OREGON



4-769-00816

816-820 N. Russell Street

Albina, Block 52, East 1/2 of Lots 17, 18
QUARTER SECTION MAP #: 2829
Eliot
Lower Albina

ORIGINAL FUNCTION: Retail, Apartment House

DATE BUILT: ca. 1895

STYLE: Streetcar Era Commercial

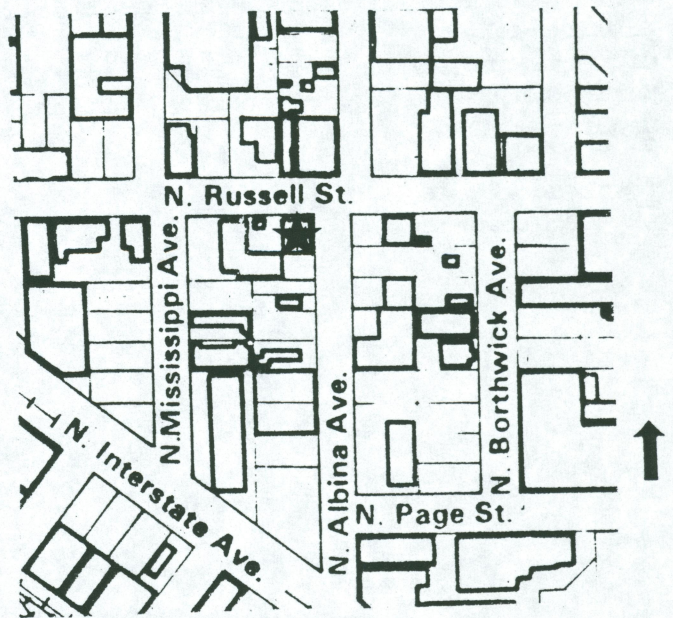
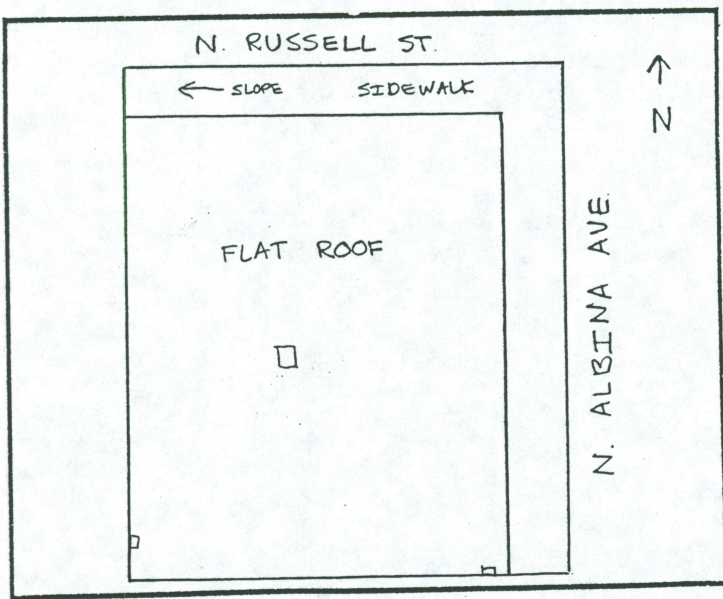
TAX ASSESSOR'S ACCOUNT #: R-00961-5280
ZONING: M2

Rank II

SPECIAL FEATURES AND MATERIALS:
Flat roof with exterior of brick. Decorative brickwork including corbelled table. Glass-filled retail base with recessed entrances, double doors.

AREAS OF SIGNIFICANCE: Architecture

Albina Community Historic Resources Inventory



ADDRESS: 816-820 N. Russell St.

1056