

STATE OF OREGON INVENTORY
OF HISTORIC PROPERTIES
State Historic Preservation Office
Oregon State Parks, Salem, OR 97310



County Jackson
 Theme Funerary: Cemetery
 Name (Common) I.O.O.F./Eastwood Cemetery
 (Historic) Medford I.O.O.F. Cemetery
 Address n.w. corner intersection of
Siskiyou Blvd. and Highland Ave.
Medford, OR
 Present Owner City of Medford
 Address City Hall, Medford, OR. 97501
 Original Use Cemetery
 Date of Construction 1890

Physical description of property and statement of historical significance:

The Medford I.O.O.F. Cemetery is situated on a sloping foothill in the southeastern part of the city. It is accessible from Siskiyou Boulevard, an arterial route that leads from the city center to outlying areas. The cemetery is bounded by Siskiyou Boulevard, Highland Avenue, Terrace Drive, and Eastwood Drive. The low hill on which it lies overlooks central Medford and the mountains which border the Bear Creek Valley on the west. Large concrete pillars mark the original main entrance gate at the north-west corner. Currently entrance is gained from a driveway off Siskiyou Boulevard. The cemetery retains its original plan on the hilly site. Laid out in a grid pattern, the resource is bordered by a perimeter road from which cross roads run in an east-west direction. At the hill's highest point plots are arranged concentrically in a circle. Known as the I.O.O.F. Circle, and divided into quarters by the road pattern, this special area contains the graves of some lodge members and their families. The roads are approximately twenty-five feet wide and are unimproved. Most are grass-covered-- a few have been gravelled. The section of road leading to the mausoleum has a blacktop surface. Plain wood fencing separates the cemetery from neighborhoods on the north, east and south. A two-acre plot in the southern portion was designated in 1890 as land for pauper burial.

continue on back if necessary

Recorded by Kay ATwood Date June 16, 1988

Sources consulted (continue on back if necessary):

City of Medford Files, Parks and Recreation Department
Eddy, James A. Correspondence, May 2, 1988
I.O.O.F. Cemetery Records, Medford City Hall, Purchasing Department

Please enclose map. Township 37 ^N S ^E R 1 W Section 29

SHPO 2172

Bibliography continued:

Jackson County Deeds, Book 22, page 582; Book 24, page 294

Jackson County News, May 22, 1925; October 20, 1925

Jacksonville Democratic Times, January 7, 1887, February 4, 1887, April 29, 1887,
July 15, 1887, March 27, 1890, November 14, 1890, February 6, 1891,
March 6, 1891

Medford I.O.O.F. Lodge No. 83) Records, I.O.O.F. Lodge Offices

Medford Mail Tribune, March 9, 1894, November 3, 1894, August 28, 1969.

Meyer, Dr. Richard, May 23, 1988

Miscellaneous Files, Southern Oregon Historical Society

Whipp, James. "A Brief Account of the Life of James Carr Whipp,"
Southern Oregon Historical Society.

United States Department of the Interior
National Park Service

**National Register of Historic Places
Continuation Sheet**

Section number 7 Page 1

The Medford I.O.O.F. Cemetery, situated on a gently sloping foothill in the southeastern part of the city, is bounded by Siskiyou Boulevard, Highland Drive, Terrace Drive and Eastwood Drive. The cemetery is accessible from Siskiyou Boulevard, an arterial route that leads from the city center along Bear Creek to the eastern section. Both Siskiyou Memorial Park (1932) and Bear Creek Park lie in a southerly direction across Siskiyou Boulevard. Established in 1890, the cemetery's collection of grave markers effectively represents 19th century mortuary art. The cemetery's over-all integrity is retained in its plan, historic markers, ornament and landscape.

The I.O.O.F Cemetery, located in Township 37 South, Range 1 West, Section 29, on Tax Lot 1800, comprises approximately twenty acres. The low hill on which it lies overlooks central Medford and the mountains which border the Bear Creek Valley on the west. Large concrete pillars mark the original main entrance gate at the northwest corner. In order to discourage vehicular traffic and decrease vulnerability to vandalism, entrance is now gained through a driveway from Siskiyou Boulevard. This entry drive extends northward between two small service buildings to the middle of the ground and turns west to the mausoleum.

The cemetery retains its original plan on the hilly site. Laid out in a grid pattern, the resource is bordered by a perimeter road from which cross roads run in an east-west direction. At the hill's highest point plots are arranged concentrically in a circle. Known as the I.O.O.F. Circle, and divided into quarters by the road pattern, this special area contains the graves of some lodge members and their families. Two major interior roads run north and south -- one directly through the center of the circle and the other from the original entrance up to the mausoleum in the southwestern section. The roads are approximately twenty-five feet wide and are unimproved. Most are grass-covered -- a few have been gravelled. The section of road leading to the mausoleum has a blacktop surface. Plain wood fencing separates the cemetery from neighborhoods on the north, east and south. A two-acre tract in the southern portion of the cemetery was originally designated as county land for pauper burial.

United States Department of the Interior
National Park ServiceNational Register of Historic Places
Continuation SheetSection number 7 Page 2

Most of the blocks and lots in the cemetery are either square or rectangular in shape. The hill's western slope and portions of the southern section remain undeveloped. The oldest graves are in the northern section near the former main entrance and the numbering of lots and plots begins in this corner.

The cemetery reveals the character of the land before settlement occurred and remains a unique open space in the city. The hillside is heavily dotted with large, old native white oak trees. Native grasses still cover the ground. Black walnuts grow by the road to the mausoleum and old arbor vitae shrubs mark the corners of several family plots. Although little formal ornamental material has been introduced several plantings enhance the cemetery's character. Italian Cypress and Siskiyou Cypress line the road near the old entrance. Evergreens, lilacs, roses, irises and bulbs have been contributed throughout the cemetery by those tending plots. Poppies, mustard, lupine and other wild flowers abound. A relatively recent memorial garden of shrubs and flowers lies at the front of the mausoleum.

The mausoleum, built by George D. Mason in 1925, is the largest structure in the cemetery. The rectangular shaped building faces in a northeasterly direction and measures approximately 100 feet in width by 60 feet in depth. Constructed of reinforced concrete, the mausoleum is covered by a flat wood deck roof. A large stained glass window in the chapel, attributed to the Povey Brothers, depicts the newly risen Christ with Mary Magdalene. (*) Bronze wall grills provide ventilation.

A mausoleum addition was built in 1947 covering the original facade. Presumably arranged to preserve the stained glass window, the new section obliterated a columned portico. The original large bronze doors were reinstalled in the new facade and the marble in the new portion was selected to match the original existing interior.

* Timothy Yockey, an Ashland stained glass craftsman, attributes the work to the Povey Brothers. Portland-trained with extensive experience with church windows and with Povey glass, he cites the window's quality and design as signs of its origin.

United States Department of the Interior
National Park Service

National Register of Historic Places
Continuation Sheet

Section number 7 Page 3

The mausoleum plan includes a vestibule, the chapel, and wings which project from the center. Alaskan white marble wainscoting covers the walls and crypts.** The floor is composed of marble in the older section and tile in the addition. The interior ceiling and upper walls are stucco.

Two small frame service buildings (ca. 1950) are located in the cemetery. A toolshed, ten feet by twelve feet in size, stands on the west side of the current entry road. It has a concrete foundation, wood siding, and a gable roof with roll roofing. Two windows are boarded over and door and window trim is plain. A shed measuring 22'6 inches by 16' 3 inches lies directly across the road from the toolshed. Sheathed with board and batten siding, it has a wood-shingled gable roof and open soffits. Openings include one sliding wood door and three three-light windows.

Most burial plots in the Medford I.O.O.F. Cemetery are defined by low concrete coping. Planter urns are frequently employed at the corners. Two plots are enclosed by wrought iron fencing bearing the name Stewart Iron Works, of Cincinnati, Ohio. The grave markers are suitably varied and represent conventional mortuary art of the late 19th and early 20th centuries. (Several markers dating from the years 1887 and 1890 were moved from an older burial ground.)

Marker materials include imported marble and imported and locally quarried granite. *** They range in design and size from small plain stones to obelisks and large columnar monuments. Turned work, chamfered corners and beveled tops are frequently employed. Flat carving and bas-relief designs appear on many of the tablets.

** James Westerfield, third generation owner of the Oregon Granite Company in Medford, described the source of much of the masonry material.

*** Granite was obtained primarily in two sites--on Tolman Creek Road south of Ashland and on John's Peak.

United States Department of the Interior
National Park Service

**National Register of Historic Places
Continuation Sheet**

Section number 7 Page 4

Ornamentation is expressed in forms typical of the period. Examples include doves, hands pointing toward the earth, stars, garlands and wreaths, drapery, oak leaves, broken trees, and ivy. Lambs frequently appear on children's markers. Both raised and V sunk lettering -- primarily in the Roman style, appear on older tablets. ****

In its appearance and integrity the I.O.O.F. Cemetery successfully represents mortuary art of the late 19th and early 20th centuries. Overall integrity has not been compromised by the addition of recent grave markers. With the opening of three area perpetual care parks, in 1932, 1955 and 1959, the number of burials in the I.O.O.F. cemetery decreased. When spouses joined a pre-deceased mate their families often simply added their name to the older stone rather than erect a new one. In a unique instance, the marker of a young man who died in 1897 was matched in shape when his mother died in 1975.

The I.O.O.F. Cemetery retains its original plan, principal design character, grave markers and most of its original natural features. Vandalism has left scars. The stained glass window has been broken and monuments toppled. The City of Medford, however, plans to restore the window and lift the monuments to their bases. Recently the city re-affixed marble slabs in the mausoleum, replaced the roof materials and repainted the interior ceiling and upper walls.

Responsibility for the cemetery rests with the City of Medford. Funds are budgeted for the adequate care of the grounds and buildings. City officials, with the assistance of a Cemetery Commission, guide its care. A grant has been obtained from the Southern Oregon Historical Society for monument restoration.

**** V sunk letters are hand cut into the stone's surface in a V shape. Later methods employed sandblasting which formed a rounded cut. Several local carvers are represented in the cemetery, including J.C. Whipp of Jacksonville, R.M. Shely and and F.M. Wait.

United States Department of the Interior
National Park Service

**National Register of Historic Places
Continuation Sheet**

Section number 7 Page 5

The I.O.O.F. Cemetery effectively reveals the city's past development in two highly visible ways. Medford, which once looked east toward the place its dead were buried, now envelops that place. Visitors to the cemetery can not only view the city's early burying ground but can visualize the original appearance of the land at the time of settlement. The cemetery remains a unique part of Medford's history.

8. Statement of Significance

Certifying official has considered the significance of this property in relation to other properties:

nationally statewide locally

Applicable National Register Criteria A B C D

Criteria Considerations (Exceptions) A B C D E F G

Areas of Significance (enter categories from instructions)

Community Planning

Period of Significance

1890-1915

Significant Dates

1890

Cultural Affiliation

N/A

Significant Person

N/A

Architect/Builder

Unknown

Mausoleum: George Mason

State significance of property, and justify criteria, criteria considerations, and areas and periods of significance noted above.

See continuation sheet

See continuation sheet

United States Department of the Interior
National Park Service

**National Register of Historic Places
Continuation Sheet**

Section number 8 Page 1

Established in 1890, the Medford I.O.O.F. Cemetery is locally significant under Criteria A for its association with the earliest period of settlement and development of Medford, Oregon. As the city's sole 19th century cemetery its period of historical significance comprises the years 1890 to 1915, when the quality and variety of its mortuary art was firmly fixed. More important, the cemetery is significant for its cultural associations -- particularly the cemetery's establishment in 1890 after severe spring floods inundated a smaller graveyard. The resource is significant in the area of community planning because its intentional placement in the foothills led Medford's development east across Bear Creek. This expansion was soon formalized in the 1901 Original City Plat.

The Medford I.O.O.F. Cemetery is one of several established by that fraternal organization in Oregon. The Oregon Department of Transportation Cemetery Survey (1978) lists 66 cemeteries that include the name I.O.O.F. in their title.* Most of these were founded between 1852 when the first I.O.O.F. lodge was organized in Oregon and the early 1920's when the extensive development of memorial parks began. Of those cemeteries for which the survey lists an opening date, twenty-five were laid out between 1850 and 1880, and nineteen were planned between 1880 and 1910. (1)

Begun in England about 1800, the Independent Order of Odd Fellows (I.O.O.F.) established their first lodge in the United States at Baltimore, Maryland in 1819. (2) Chemeketa Lodge, No. 1, Salem, was instituted December 6, 1852 as Oregon's first lodge. Others soon followed -- Portland and Oregon City in 1853, and Albany in 1854. (3)

*These figures give only an approximate idea of I.O.O.F. cemetery location in Oregon. In many cases the I.O.O.F. name has been abandoned and a new name given. In other instances the lodge took over cemeteries established at an earlier date.

United States Department of the Interior
National Park Service

**National Register of Historic Places
Continuation Sheet**

Section number 8 Page 2

The I.O.O.F. was the first fraternal order to offer its members financial benevolencies. (4) An early issue of the "Pacific Odd Fellow" cited the four duties expected of members:

Move modestly, quietly and without ostentation, obeying the injunction of the ritual to visit the sick, to relieve the distressed, to bury the dead and to educate the orphan. (5)

The current Grand Secretary of the Oregon Grand Lodge explained recently :

The "duty" most apparent to non-members was the building of cemeteries and almost every Odd Fellows Lodge obtained property and established a cemetery as soon as they were able after establishing a new lodge so that members and their families could have decent burial. Some lodges never did own cemeteries due to the proximity of existing ones, or lack of capital ... and larger cities might have several lodges which usually shared one cemetery. (6)

The I.O.O.F. Cemetery at Medford was laid out when the town's pressing need required that one be opened. Medford was created when Jacksonville citizens failed to raise \$25,000 plus the right of way for a railroad line. The Oregon and California Railroad chose an alternate route east of Jacksonville and on October 27, 1883 four men deeded land to the railroad company to open the new townsite of Medford. Buildings were under construction before the rails arrived. (7) Officially platted on December 20, 1883, Medford gained forty buildings, including businesses, churches, hotels, saloons and houses during the first winter. The new town, with a population of approximately 400, incorporated February 24, 1885. (8)

In the spring of 1885 J.H. Stewart arrived in Medford and planted a large orchard of apple, pear, prune and almond trees a few miles southwest of town. Five years later Stewart established the commercial fruit industry by shipping the first carload of pears for sale outside the local market. During the next twenty years thousands of new residents would flock to Medford to join him in that agricultural pursuit. (9)

United States Department of the Interior
National Park Service

**National Register of Historic Places
Continuation Sheet**

Section number 8 Page 3

Along with rapid growth came the need to bury the dead -- both loved ones and strangers. During the first two years after incorporation many Medford burials took place in the Jacksonville Cemetery about five miles away. Eventually plans were made to open a local graveyard. In April, 1887 a local paper announced:

The Odd Fellows of this place have purchased a piece of land of J.M. Short, about a mile west of town which they are putting in shape for a cemetery. It will be made a neat spot in the due course of time. (10)

By mid-summer the cemetery, located on the road to Jacksonville, was underway:

The IOOF graveyard which has been located half a mile west of this place is being put into shape. It is proposed to make it a handsome burying ground. (11)

The Medford Lodge of the Independent Order of Odd Fellows (No. 83) had elected officers in early January, 1887 and by immediately laying out the cemetery fulfilled one of the four duties expected of each lodge and its members -- to bury the dead. (12)

In February, 1890, with a population of 900, the young town struggled with the effects of a flood. Quickly melting snow in the mountains and sixteen inches of rain in three weeks brought disaster. (13) The bridge over Bear Creek went out and water rushed everywhere. On February 4, 1890 a Jacksonville paper reported:

Medford was, this week, visited by the biggest flood ever known in these parts. Water is standing in many places in town. . . unless measures are taken in the early spring to reduce this surplus water, much sickness will result. (14)

When water inundated the new graveyard the Odd Fellows Lodge and town officials realized that a new site was necessary:

United States Department of the Interior
National Park Service

**National Register of Historic Places
Continuation Sheet**

Section number 8 Page 4

The authorities have very sensibly concluded to abandon the town cemetery west of town and will lay out a new cemetery on land procured from F. Barneburg on the east side of Bear Creek where no evil effects can result to the town from the drainage of the burying ground. A beautiful site has been secured for the new location. (15)

The Medford I.O.O.F. Lodge bought the land -- twenty and 22/100 acres of the William Barneburg Donation Land Claim -- for \$700.00. (16) Located on a prominent oak-studded hillside approximately one mile east of Medford, the site offered an attractive and practical location for resettling the cemetery. The Barneburg family had previously interred two family members on the hillside, in 1878 and 1883.

Officials soon decided to move all the bodies interred in the older graveyard to the site east of town. (17) In the early spring of 1890 stout workers exhumed the coffins and transported them on hayracks to the new location.

The bodies buried in the IOOF cemetery west of town are being exhumed and reinterred in the new cemetery across Bear Creek. The new burying grounds are much more beautiful and appropriate than the ones now being vacated. (18)

That spring lodge members and interested Medford citizens built a good road to the new burial ground. (19) In the spring of 1894 additional improvements were made and work continued throughout the year:

A few of the Medford Odd Fellows met at their cemetery Tuesday and did considerable work by way of improving the grounds. The work of marking lots was completed, a circle was plowed around the grounds for a driveway, a number of Monterey Cypress trees were set out and some little grubbing done. These trees were set out as a test and if it is found they can be made to grow and thrive several hundred will be put out this fall. There have been seventy-four burials made in this cemetery, and the lodge feels that the work of beautifying the place is necessary. (20)

United States Department of the Interior
National Park Service

**National Register of Historic Places
Continuation Sheet**

Section number 8 Page 5

In November work was begun on a well:

The well in the Odd Fellows cemetery is down 162 feet and the water raises to a depth of 100 feet, but as this can be pumped out in a very short time it has been deemed expedient to go deeper, in hopes of procuring a greater supply... (21)

In the summer of 1900 a road was constructed from East Main Street to allow more convenient access to the cemetery. The paper reported:

The local Lodge of Odd Fellows has purchased 2 1/2 acres of land lying between the county road and the entrance to the cemetery on which a road will be built which will afford many advantages over the one presently in use. It will not only lessen the distance considerably but will do away with climbing the big steep hill, avoiding nearly 36 feet of grade. (22)

Medford continued to grow at a rapid pace. In 1901 the Medford Original City was platted consisting of two major enlargements. The original townsite was expanded west of Bear Creek and a sizeable tract of land east of the creek that extended toward the new cemetery, was incorporated into the city. (23) Medford was vigorously promoted during the decade and travellers on their way to the Lewis and Clark Exposition in 1905 saw richly displayed produce from area farms and orchards. Many visitors returned to buy land. After a well-publicized visit in 1907 by Mrs. Potter Palmer of Chicago, easterners rushed to Medford. The city was so crowded during the summer that tents were set up for newcomers. The population, numbering 1791 in 1900, reached 8840 by 1910. (24)

The graveyard filled rapidly as the town grew and in the years before World War I the I.O.O.F Lodge considered the construction of a new improvement to their cemetery. The growing movement across the country for above-ground burial -- in mausoleums -- had reached Oregon. In June, 1914 the Oregonian stated that Eugene would construct the second mausoleum in the state, joining one in Salem. (25) The article reported that similar buildings were planned for Astoria, Roseburg, Medford, Ashland, Grants Pass and Portland. (26) Not until 1924, however, were

United States Department of the Interior
National Park Service

**National Register of Historic Places
Continuation Sheet**

Section number 8 Page 6

solid plans underway for a mausoleum in Medford. On October 13, of that year a local paper announced:

Mr. Mason will superintend a large mausoleum in Medford in the new cemetery near that city, which will cost approximately \$100,000 ... (27)

By April, 1925 plans were well underway for the building, to be composed of reinforced concrete, marble, bronze and glass, and containing space for 200 burials. Californian George D. Mason, the builder, had erected mausoleums in Arizona, Oregon and California. Mason had just completed a mausoleum for the Ashland I.O.O.F. Cemetery. (28) Mason, who was also to secure sales, explained:

Earthly burial is essentially abhorrent and the site of desolate cemeteries is so common that neither word nor picture is required to emphasize the imperfections of burial in the ground. How much gentler the thought of consigning the form of the dear one to its housing, free from elemental havoc... (29)

Ground breaking ceremonies, attended by local dignitaries and a large contingent of western Odd Fellows from an encampment at Ashland. were held May 20, 1925.(30) On October 18, 1925 the new \$63,000 memorial mausoleum was formally dedicated and described as "the most perfect example of classic architecture in Oregon." (31)

An increasing number of burials led to the enlargement of the mausoleum. In February, 1947 the I.O.O.F. Lodge approached George D. Mason and signed an agreement for him to construct an addition to the mausoleum. Specifications required that the original bronze doors be used on the new facade. The earliest recorded burial in the new addition occurred on December 26, 1947. (32)

After World War II east Medford developed rapidly and in 1953 the city limits expanded to include the cemetery. Neighborhoods developed and Siskiyou Boulevard was completed near Bear Creek.(33) Two new cemeteries were established. In addition to Siskiyou Memorial Park (1932), Memory Gardens (1955) and Hillcrest Memorial Park (1959) were opened. (Only the I.O.O.F. Cemetery and Siskiyou Memorial Park lie within the Medford city limits.)

United States Department of the Interior
National Park Service

**National Register of Historic Places
Continuation Sheet**

Section number 8 Page 7

In the late 1960's The Medford I.O.O.F. Lodge acknowledged their declining membership and depleted funds and asked the city to operate the cemetery. Prolonged political debate over responsibility and funding prompted Mail Tribune editor Eric Allen to write:

The city has long been specifically authorized, by law to engage in the operation, maintenance and upkeep of cemeteries, and it can be argued that the I.O.O.F. has relieved the city of this responsibility for more than 80 years ... We do not see that the city has any alternative other than to assume the responsibility and all that this entails, and to do so graciously, positively, without strings, and at once. (34)

The I.O.O.F. Lodge and the city signed an agreement on December 16, 1969 stating that the lodge would operate the cemetery until their grave maintenance funds were completely exhausted and then transfer ownership to the city. In January, 1972 official cemetery ownership came into city hands. Supervision functioned smoothly until 1983 when drastically declining city revenues and slashed budgets resulted in cemetery neglect. The grass grew wildly and vandalism increased. In 1986 a fervent effort by a small group of devoted citizens pressed the city to resume adequate maintenance. Funding was restored for the fiscal year 1987-1988 and care of the cemetery continues. (35)

In recent years the city has not actively pursued cemetery business. Plots are sold only to I.O.O.F. members and their relatives and burials are arranged for those who have already purchased plots or crypts. Approximately ten to twenty burials occur each year. (36)

The Medford I.O.O.F. Cemetery is historically significant for the years spanning 1890 to 1915. At the beginning of this period the oldest grave markers were put in place and by 1915 the design and craftsmanship that distinguished typical 19th and early 20th century mortuary art had become substantially less apparent.

Grave markers are composed primarily of imported marble and imported or locally quarried granite. They range in design and

United States Department of the Interior
National Park ServiceNational Register of Historic Places
Continuation SheetSection number 8 Page 8

size from small round-topped stones to obelisks and large columnar monuments. Turned work, chamfered corners and beveled tops are frequently employed. Flat carving and bas-relief designs appear on many of the tablets. Ornamentation represents typical choices of the late 19th century -- including doves, garlands and wreaths, draped columns, oak leaves, and lambs.

The cemetery contains markers carved by several accomplished area craftsmen. James Carr Whipp, proprietor of the Jacksonville Marble Works, has several representative stones there. One, dated 1887, marks the location of a grave moved from the earlier burial ground to the new site. A respected and accomplished carver, Whipp's markers are found in several locations throughout the region and the state. (37) A native of England, J.C. Whipp came to Portland in the mid 1870s' and executed stone work on several buildings including the Oregonian Building, the Portland Hotel and the Tillamook Light House. He moved to Southern Oregon in 1883 to work on the Jackson County Courthouse at Jacksonville. (38)

Carver R.M. Shely is also represented in the cemetery. Shely advertised in January, 1887, that he was a "first class marble cutter resuming business at Medford..." (39) Shely's work is represented throughout Southern Oregon (40) Frank M. Wait, proprietor of the Medford Marble and Granite Works in 1910 is also represented. Near the turn of the century, Wait, son of Medford physician Dr. J.B. Wait, was awarded a contract for the Federal Building in Salem. (41)

A large number of marble and granite markers in the I.O.O.F. cemetery have been supplied by the Oregon Granite Company. Organized by E.A. Hicks in 1900, the business continues in family ownership and operates from the building at Sixth and Front Streets in Medford. (42)

Many individuals significant in Medford's past rest in the I.O.O.F. Cemetery, including mayors, physicians, editors, judges and commissioners as well as people in less prominent vocations. Iradell J. Phipps, (d. 1913), one of the men who developed Medford's townsite, is buried here as is J.H. Stewart, (d. 1907), who established the commercial fruit industry in Southern Oregon. (43) As all burial grounds do, the Medford I.O.O.F. cemetery contains grave markers that suggest degrees of individual position and wealth, but most poignantly reveal life and, of course, loss.

United States Department of the Interior
National Park Service

**National Register of Historic Places
Continuation Sheet**

Section number 8 Page 9

Notes

1. Oregon Department of Transportation, Cemetery Survey, 1978.
2. Alvin J. Schmidt, THE GREENWOOD ENCYCLOPEDIA OF AMERICAN INSTITUTIONS: FRATERNAL ORGANIZATIONS, Westport Connecticut: Greenwood Press, 1980, pp. 243-244. By 1861 there were 42 grand lodges (state jurisdictions) in the United States.
3. "Early Oregon Odd Fellowship," PACIFIC ODD FELLOW, (April, 1901) No. 4, Vol. 10, pp. 6-7
4. Schmidt, THE GREENWOOD ENCYCLOPEDIA OF AMERICAN INSTITUTIONS: FRATERNAL ORGANIZATIONS, pp. 243-244
5. "PACIFIC ODD FELLOW," p. 8.
6. James A. Eddy, Correspondence, May 2, 1988.
7. Kay Atwood and Marjorie Lutz O'Harra, MEDFORD, 1885-1985, Medford, Oregon, 1985, p. 7.
8. Ibid., p. 8.
9. Kay Atwood, BLOSSOMS AND BRANCHES, A GATHERING OF ROGUE VALLEY ORCHARD MEMORIES, Ashland, Oregon, 1980, p.5.
10. DEMOCRATIC TIMES (Jacksonville), March 18, 1887; April 29, 1887.
11. Ibid., July 15, 1887.
12. Ibid., January 7, 1887
13. Ibid., February 13, 1890
14. Ibid., February 4, 1890.
15. Ibid., March 27, 1890
16. Jackson County Deeds, Book 22, page 582, Book 24, page 294 (recorded July 19, 1891.) William Barneburg began settlement of his claim in Southern Oregon, DLC No. 52, in 1854.

United States Department of the Interior
National Park Service

**National Register of Historic Places
Continuation Sheet**

Section number 8 Page 10

17. DEMOCRATIC TIMES, (Jacksonville) November 14, 1890
18. Ibid., February 6, 1891.
19. Ibid., March 6, 1891.
20. MAIL TRIBUNE (Medford) March 9, 1894.
21. Ibid., April 6, 1894; November 3, 1894.
22. News Clipping, 1900, Scrapbook, collection of Lida Childers, Medford, Oregon.
23. Please see attached map.
24. Atwood and O'Harra, p. 8, 34.
25. OREGONIAN, June 14, 1914, July 27, 1913.
26. Ibid., June 14, 1914.
27. Miscellaneous Manuscript, October 13, 1924, Southern Oregon Historical Society.
28. MAIL TRIBUNE (Medford), April 18, 1925, DAILY TIDINGS, (Ashland), December 19, 1924.
29. MAIL TRIBUNE, April 18, 1925.
30. Jackson County News, May 22, 1925
31. Ibid., October 20, 1925.
32. Medford I.O.O.F. Lodge records, Medford, Oregon; I.O.O.F. Cemetery Records, City Hall, Medford, Oregon 97501. Mason's role as designer for the addition has not been determined.
33. Jackson County Deeds, Book 296, page 160, Book 196, page 176; 66-06-13.
34. MAIL TRIBUNE, August 28, 1969.
35. Ibid.; Scrapbook, Lida Childers Collection.

United States Department of the Interior
National Park Service

**National Register of Historic Places
Continuation Sheet**

Section number 8 Page 11

36. City of Medford Cemetery Files.
37. Dr. Richard Meyer, Western Oregon State College, Monmouth, May 23, 1988.
38. James Whipp, "A Brief Account of the Life of James Carr Whipp,"
39. DEMOCRATIC TIMES, January 7, 1887.
40. Dr. Richard Meyer, May 23, 1988.
41. DEMOCRATIC TIMES, n.d., 1900; Polk's Jackson County Directory, 1910.
42. CAPITOL'S WHO'S WHO FOR OREGON 1948-1949, Portland, Oregon: Capitol Publishing Company, 1948, p. 263.
43. MAIL TRIBUNE, September 7, 1969; Scrapbooks, Lida Childers Collection; I.O.O.F. Cemetery Records, Medford City Hall.

MOPFORD I.O.O.F. CEMETERY

SW 1/4 SEC. 29 TWP. 37S. R. 1 W.

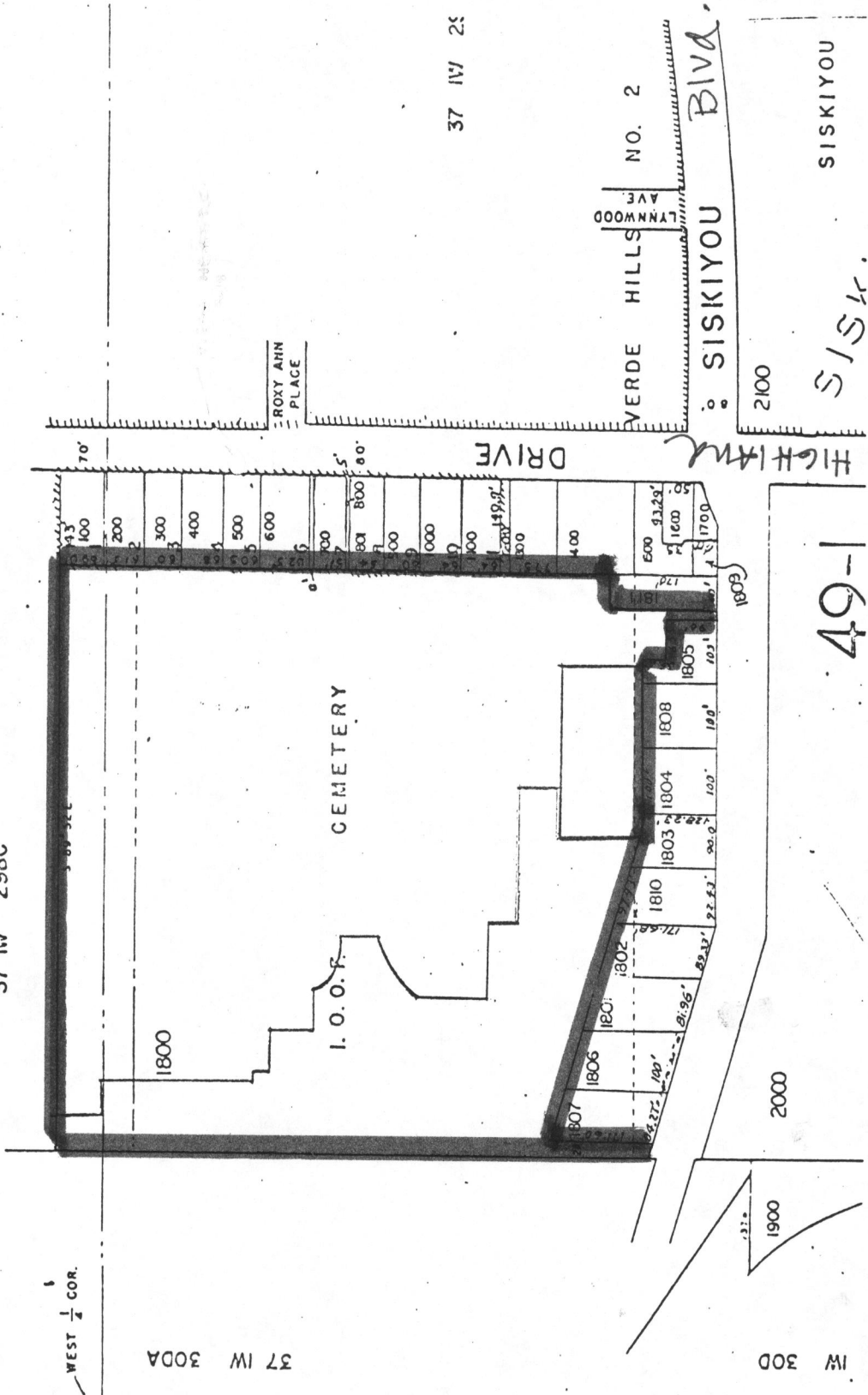
1" = 200'

Exhibit "D"

37 W 298C

WEST 1/4 COR.

37 W 30DA



37 W 2S

VERDE HILLS NO. 2

SISKIYOU BLVD.

2100

SISKIYOU

SISKIYOU

49-1

37 W 30D

2000

1900



MEDFORD I.O.O.F. CEMETERY • PLAN.

