

0107

United States Department of the Interior  
National Park Service

National Register of Historic Places  
Registration Form

JAN 27 1989

NATIONAL  
REGISTER

This form is for use in nominating or requesting determinations of eligibility for individual properties or districts. See instructions in *Guidelines for Completing National Register Forms* (National Register Bulletin 16). Complete each item by marking "x" in the appropriate box or by entering the requested information. If an item does not apply to the property being documented, enter "N/A" for "not applicable." For functions, styles, materials, and areas of significance, enter only the categories and subcategories listed in the instructions. For additional space use continuation sheets (Form 10-900a). Type all entries.

1. Name of Property

historic name Raabe, Captain George, House  
other names/site number N/A

2. Location

street & number 1506-08 S.E. Taylor  not for publication  
city, town Portland  vicinity  
state Oregon code OR county Multnomah code 051 zip code 97214

3. Classification

Ownership of Property

- private
- public-local
- public-State
- public-Federal

Category of Property

- building(s)
- district
- site
- structure
- object

Number of Resources within Property

Contributing	Noncontributing
1	1 buildings
	sites
	structures
	objects
1	1 Total

Name of related multiple property listing:  
Historic and Architectural Resources  
of Eastside Portland

Number of contributing resources previously  
listed in the National Register N/A

4. State/Federal Agency Certification

As the designated authority under the National Historic Preservation Act of 1966, as amended, I hereby certify that this  nomination  request for determination of eligibility meets the documentation standards for registering properties in the National Register of Historic Places and meets the procedural and professional requirements set forth in 36 CFR Part 60. In my opinion, the property  meets  does not meet the National Register criteria.  See continuation sheet.

Signature of certifying official

January 23, 1989  
Date

Oregon State Historic Preservation Office

State or Federal agency and bureau

In my opinion, the property  meets  does not meet the National Register criteria.  See continuation sheet.

Signature of commenting or other official

Date

State or Federal agency and bureau

5. National Park Service Certification

I, hereby, certify that this property is:

- entered in the National Register.  
 See continuation sheet.
- determined eligible for the National Register.  See continuation sheet.
- determined not eligible for the National Register.
- removed from the National Register.
- other, (explain):

Bruce J. Noble, Jr.

3/7/89

Signature of the Keeper

Date of Action

**6. Function or Use**

Historic Functions (enter categories from instructions)

DOMESTIC; Single Dwelling

Current Functions (enter categories from instructions)

DOMESTIC; Multiple Dwelling

**7. Description**

Architectural Classification

(enter categories from instructions)

Bungalow/Craftsman

Shingle Style

Materials (enter categories from instructions)

foundation Concrete

walls Shingle

Weatherboard

roof Asphalt

other

Describe present and historic physical appearance.

**EXTERIOR DESCRIPTION**

Sited on the northwest corner of the block, the lot that this house occupies is elevated some five feet above grade. The surrounding yard has many plantings, a few sizable trees, and extensive beds of flowers in the backyard. To the rear of the house, on 15th Street, a poured concrete garage with a flat roof provides space for two cars. It does not appear to have been used for many years.

This one-and-one-half story house is rectangular in plan and has a concrete foundation with a full basement. Covering this structure is a bellcast gable roof which runs along an east-west axis, and the flared, bellcast edges come down over full-length inset porches on both the front and rear elevations. The roof over the front porch is supported by classical Tuscan columns while the rear has square columns. Square balusters compose the balustrades on both porches. Three dormers project from the roof. On the north face is a hip dormer with a pair of one-over-one double-hung sash windows surrounded by rows of imbricated shingles, and a polygonal half tower with a pyramidal roof. The half tower has fixed multi-light windows which flank a double-hung sash window. One large gable dormer projects from the south face with a second-story porch perched on the roof outside of it. Imbricated shingles adorn its face.

The first floor of the house is covered with bevelled shiplap. A belt course runs above the first floor separating it from the second. The broad gable ends, to the east and west, are clad with alternating rows of rectangular, fishscale, and triangular shingles. The faces of the gable ends are broken by an assortment of windows. At the top of the gable ends is a tripartite window with two smaller windows flanking the larger central window. The central window is decorated at the top by a keystone-like triangle. The primary windows are one-over-one double-hung sash with architrave surrounds. Additionally, there are numerous casements.

United States Department of the Interior  
National Park Service

## National Register of Historic Places Continuation Sheet

Section number 7 Page 2

---

The front elevation (north) has two front doors on the eastern end of the porch, the original has three horizontal molded panels below a single pane. Narrow sidelights flank the doorway and fluted pilasters separate the sections. On the west end of the front porch, a polygonal bay rests below the tower and has a leaded glass transom over the central window.

The house retains most of its original features. The western elevation has a projecting polygonal bay. A few of the original windows on the east side have been replaced by smaller one-over-one double-hung windows. The windows in the south facing gable dormer were replaced by aluminum frame sliding glass doors. A deck has been added to the rear (south) elevation.

### INTERIOR DESCRIPTION

The first floor has five rooms, while the upstairs - which has received substantial alterations - is divided into three rooms. The first floor has essentially retained its original configuration and finishes. Finishwork generally consists of baseboards and picture molding. The living room, kitchen and the former dining room are located off the foyer. The living room is entered through a round-arch opening. Pocket doors separate the living room from the former dining room. These pocket doors are ill-fitted and appear to be not original. The back room is now used as a bedroom and has two built-in cabinets which appear to be fairly recent additions to the room. The kitchen and bathroom have original cupboards and fixtures, such as clawfoot tub and wall-hung sink. Kitchen cabinets include what appears to have been a wood-lift.

A second front door leading directly to the stairs allows access to the second floor. The doorway was added in the 1940s and the door was added in 1983. The stairs have been enclosed but a panelled newel post with a pyramidal cap and turned balustrade has been retained.

A second-floor was converted into a separate unit in the 1940s. Arranged around a central hall, this unit has two bedrooms and an open kitchen/living room. The kitchen/living room was created from two rooms in 1986. A deck off the kitchen was constructed in 1986 and is entered through sliding doors flanked by short sidelights.

**8. Statement of Significance**

Certifying official has considered the significance of this property in relation to other properties:

nationally  statewide  locally

Applicable National Register Criteria  A  B  C  D

Criteria Considerations (Exceptions)  A  B  C  D  E  F  G

Areas of Significance (enter categories from instructions)

Architecture  
Transportation

Period of Significance

1902-1907

Significant Dates

1902

Cultural Affiliation

N/A

Significant Person

Raabe, Captain George

Architect/Builder

McKeen Brothers (Attrib.)

State significance of property, and justify criteria, criteria considerations, and areas and periods of significance noted above.

The Captain George Raabe Residence, constructed in 1902, is locally significant under criterion C as a rare and exceedingly fine example of an eclectic stylistic type incorporating elements of the Craftsman, Shingle and Colonial Revival styles. Secondly, the house is significant under criterion B for its association with Captain George Raabe a longtime employee of the Oregon Railroad and Navigation Company who piloted early steamboats on the Columbia and Willamette rivers. The date of construction is based on deed records and city directories.

The Raabe House shows the influence of the Shingle style in the broad sweep of the side-gabled roof with its asymmetrically placed half-tower, as well as the characteristic shingle siding, and simple window surrounds. Colonial Revival elements, which are commonly found on Shingle style buildings, include the classical columns supporting the recessed front porch, fluted pilasters flanking the entrance, and a small band of windows in a tripartite arrangement located in the upper gable ends. This bank of windows is accentuated by a stepped window head at the center bay which suggests a Palladian window--also commonly associated with the Shingle style.

The Shingle style is an unusually free-form and variable style. Without the hallmark shingle siding it is difficult to categorize its many diverse expressions. In general the style was never widely adapted to mass vernacular housing. The particular form which this house takes is uncommon to the study area--only twelve are included in this survey all of which were constructed between approximately 1899 and 1905. Of these twelve, the Raabe House is one

United States Department of the Interior  
National Park Service

## National Register of Historic Places Continuation Sheet

Section number 8 Page 2

---

of two which are considered potentially eligible for the National Register, the others being lesser representatives of the type or having lost some amount of physical integrity.

George Raabe purchased the subject property from "The Hawthorne Estate", also called the Homestead Association, in 1901. This estate was bequeathed to Rachel Louise Hawthorne after the death of Dr. James Hawthorne, a prominent early resident of East Portland. The estate included a great deal of vacant land which Mrs. Hawthorne developed and sold in the early years of the 20th century. Many of the homes that were constructed on the Hawthorne property were built by the McKeen Brothers, prominent local contractors and designers. It is not known whether they constructed the subject house.

Raabe was born in Norway in 1852. He came to the United States with his parents at the age of fourteen. The family first settled in California before coming to Oregon in approximately 1868. Raabe began working on steamboats shortly after his arrival in Oregon. During his long career, which lasted over 30 years, Raabe piloted and built a number of the steamers which regularly plied the Willamette and Columbia rivers. The Old McMinnville was the first boat he captained. Raabe later became captain of the William H. Hoag, construction of which he supervised for the Oregon Pacific Railroad Company. He built the Salem in 1880 and commanded the steamer Multnomah before her retirement in 1887. Raabe went to Alaska in 1898, during the gold rush, where he spent a year piloting steamers on the Stickine River. He was a pioneer steamboat man on Alaskan waters. Raabe returned to Portland in about 1900 and shortly thereafter purchased the subject house.

Raabe lived in the dwelling until approximately 1907 when he sold it to John H. James. During the time he lived in the house he continued to pilot steamboats on local waters. After Raabe sold the property he periodically returned to Alaska where he piloted boats on the Yukon River between White Horse and Dawson.

**9. Major Bibliographical References**

- . City of Portland Building Bureau microform and card files.
- . City of Portland Bureau of Planning, Portland Historic Resource Inventory, 1983.
- . Multnomah County Tax Assessor records, microform, and card files, Portland, 1980.
- . Polk, R. L. and Co., Portland City Directories, 1904-1910.
- . Ticor Title Company records, Portland, Oregon.
- . Wright, Edgar W., Lewis and Drydens Marine History of the Pacific Northwest. Seattle: Superior Publishing Co., 1895.

See continuation sheet

Previous documentation on file (NPS):

- preliminary determination of individual listing (36 CFR 67) has been requested
- previously listed in the National Register
- previously determined eligible by the National Register
- designated a National Historic Landmark
- recorded by Historic American Buildings Survey # \_\_\_\_\_
- recorded by Historic American Engineering Record # \_\_\_\_\_

Primary location of additional data:

- State historic preservation office
- Other State agency
- Federal agency
- Local government
- University
- Other

Specify repository: \_\_\_\_\_

**10. Geographical Data**

Acreeage of property Less than one acre Portland, Washington-Oregon 1:62500

UTM References

A 1,0 5,2,7 4,2,5 5,0 4,0 0,0,0  
 Zone Easting Northing

C \_\_\_\_\_

B \_\_\_\_\_  
 Zone Easting Northing

D \_\_\_\_\_

See continuation sheet

Verbal Boundary Description

Hawthorne Park addition, W. 1/2 of Lot 1 & 2, Block 327

See continuation sheet

Boundary Justification

Taxlot lines

See continuation sheet

**11. Form Prepared By**

name/title K. Zisman, J. Koler, J. Morrison, B. Grimala, A. Yost  
 organization Hawthorne Blvd. Business Association date August 15, 1988  
 street & number 615 S.E. Alder telephone (503) 234-4801  
 city or town Portland state Oregon zip code 97214

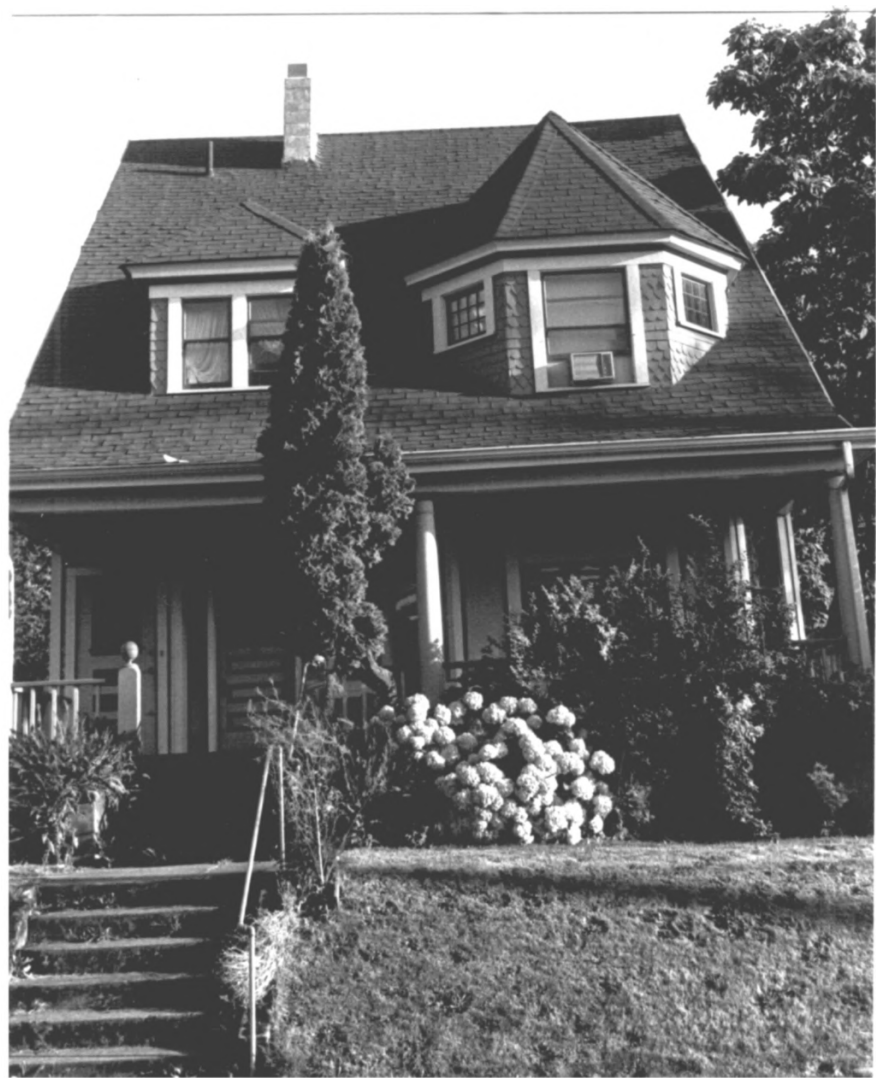






- 1 Raabe, Capt. George House / 1506-08 S.E. Taylor
- 2 Portland, Oregon, Multnomah County
- 3 Smith, Patrick
- 4 August 1988
- 5 Roll S-21 # 20
- 6 Looking south east at north and west elevations
- 7 # 1 or 2

Portland Eastside  
MPS



- 1 Raabe, Capt. George House / 1506-08 S.E. Taylor
- 2 Portland, Oregon, Multnomah County
- 3 Smith, Patrick
- 4 August 1988
- 5 Roll 5-21 # 19
- 6 Looking south at north elevation
- 7 # 2 OF 2

Portland East side MPS