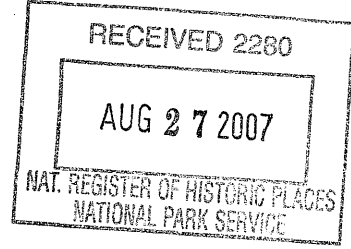


United States Department of the Interior
National Park Service



1077

National Register of Historic Places Registration Form

This form is for use in nominating or requesting determinations for individual properties and districts. See instruction in How to Complete the National Register of Historic Places Registration Form (National Register Bulletin 16A). Complete each item by marking "x" in the appropriate box or by entering the information requested. If an item does not apply to the property being documented, enter "N/A" for "not applicable." For functions, architectural classifications, materials and areas of significance, enter only categories and subcategories from the instructions. Place additional entries and narrative items on continuation sheets (NPS Form 10-900a). Use a typewriter, word processor, or computer, to complete all items.

1. Name of Property

historic name Manning-Kamna Farm

other names/site number Carlos and Elizabeth Wilcox Farm; Elizabeth and Louis Manning Farm; Kamna Farm

2. Location

street & number 29375 NW Evergreen Road not for publication

city or town Hillsboro vicinity

state Oregon code OR county Washington code 067 zip code 97124

3. State/Federal Agency Certification

As the designated authority under the National Historic Preservation Act, as amended, I hereby certify that this X nomination request for determination of eligibility meets the documentation standards for registering properties in the National Register of Historic Places and meets the procedural and professional requirements set forth in 36 CFR Part 60. In my opinion, the property X meets does not meet the National Register criteria. I recommend that this property be considered significant nationally statewide X locally.

[Signature]
Signature of certifying official/Title - Deputy SHPO

8-24-07
Date

Oregon State Historic Preservation Office
State or Federal agency and bureau

4. National Park Service Certification

I hereby certify that the property is:
Action

- entered in the National Register
See continuation sheet.
- determined eligible for the National Register
See continuation sheet.
- determined not eligible for the National Register
- removed from the National Register
- other (explain):

[Signature]
Signature of the Keeper
Edson H. Beall
Date of 10/10/07

Manning-Kamna Farm
Name of Property

Washington Co., OR
County and State

5. Classification

Ownership of Property
(check as many as apply)

- private
- public - local
- public - state
- public - Federal

Category of Property
(check only one box)

- building(s)
- district
- site
- structure
- object

Number of Resources within Property
(Do not include previously listed resources in the count)

Contributing	Noncontributing	
10		buildings
		sites
		structures
		objects
10		Total

Name of related multiple property listing
(enter "N/A" if property is not part of a multiple property listing)

N/A

Number of contributing resources previously listed in the National Register

0

6. Function or Use

Historic Functions
(enter categories from instructions)

DOMESTIC: single dwelling

DOMESTIC: secondary structure

AGRICULTURE/SUBSISTENCE: processing

AGRICULTURE/SUBSISTENCE: storage

AGRICULTURE/SUBSISTENCE: agricultural outbuilding

Current Functions
(Enter categories from instructions)

DOMESTIC: single dwelling

DOMESTIC: secondary structure

VACANT/NOT IN USE

AGRICULTURE/SUBSISTENCE: agricultural outbuilding

7. Description

Architectural Classification
(Enter categories from instructions)

LATE VICTORIAN

OTHER: Cross-wing Western Farmhouse

Materials
(Enter categories from instructions)

foundation: WOOD: post and beam

walls: WOOD: weatherboard

STUCCO

roof: ASPHALT, METAL: Steel

Other: WOOD: log, plywood

Narrative Description
(Describe the historic and current condition of the property on one or more continuation sheets)

See continuation sheets.

United States Department of the Interior
National Park Service

National Register of Historic Places Continuation Sheet

Section number 7 Page 1

DESCRIPTION

SUMMARY

Located at 29375 NW Evergreen Road, the Manning-Kamna Farm is an ensemble of ten buildings on a 2.22 acre parcel located north of Hillsboro, in Washington County, Oregon, on a portion of the original C.D. Wilcox Donation Land Claim 59. The group consists of a farmhouse, barn, chop house, chicken house, potato shed, smokehouse, privy, canning shed, pumphouse, and garage. The Manning-Kamna Farm retains buildings dating from the late nineteenth and twentieth centuries that related to and are demonstrative of both the agricultural and domestic functions of farming life during this period.

SETTING

The Manning-Kamna Farm is located two and one-half miles south of Oregon Highway 26, which runs west to the Pacific Ocean and east to metropolitan Portland, Oregon. Northwest Jackson School Road is located approximately 1000 feet to the east, and provides a connection to Highway 26. Northwest Old Scotch Church Road is approximately one and one-half miles directly north of the parcel. The farm is bordered on the south by Northwest Evergreen Road. Access to the farm is made via a gravel drive at the intersection of Northwest Evergreen and Northeast Jackson School Road. A dedicated stop light provides access from the gravel drive to this intersection.

The Manning-Kamna Farm is bordered on the north, east, and west by agricultural land. To the south are neighborhoods of single family residences, most of which have been built since 1990. The pattern of curving streets, cul-de-sacs, and a residential lot division grid is consistent to the south and runs to downtown Hillsboro. To the east and along the Highway 26 corridor, a large number of structures housing light industrial and light manufacturing uses have been built over the last ten to fifteen years. Encouraged by the designation of these parcels for light industrial growth by Metro, a large area northeast of the site shows a consistent development pattern of clusters of warehouse and light manufacturing buildings built in industrial park settings.¹

The Manning-Kamna Farm resides on flat land, and the building ensemble is laid out in a rectangular shape, bordered on the west by the barn, and on the east by a laurel hedge. The privy and the smokehouse are on the eastern edge of the ensemble. The canning shed is located between the house to the west and the privy to the east. The farmhouse is in the center of the ensemble, with the chophouse to the north, and the pumphouse and garage to the northwest of the gravel drive and parking area. The barn forms the western edge of the ensemble, and the northeast corner is formed by the chicken coop and potato shed, which is located north and slightly west of the privy. All of the buildings are organized along cardinal compass points.

¹ Metro (Metropolitan Service District) is the regional governing body for the three county region encompassing Washington, Multnomah and Clackamas Counties, which deals with regional land use and services issues.

United States Department of the Interior
National Park Service

National Register of Historic Places Continuation Sheet

Section number 7 Page 2

FARMHOUSE

The house on the Manning-Kamna Farm is a one and one-half story Late Victorian, cross-wing western farmhouse built between 1876 and 1883.² The house is wood frame, supported on posts and beams, with eight-by-eight inch posts and eight-by-eight inch beams at approximately eight foot centers along the center of the house. The six-by-two inch full dimension rough sawn Douglas fir floor joists run east to west on twenty-four inch centers. The full dimension two-by-four inch Douglas fir wall studs are mortised into the six-by-twelve inch mudsill.³ Two-by-four inch diagonal blocking runs between floor framing members on the perimeter of the house. The porch floor joists are rough sawn two-by-ten inch at ten inches on center. The house originally had no foundation or cellar, but in the 1980s, pressure treated wood was added to the base of the house to provide a transition between the soil and the structure. In 2006, a new concrete foundation with a basement was completed to support the house.

The floor plan of the house is cruciform in shape, with four hip-roofed porches. The steep intersecting gable roofs are covered with composition shingles. The two longest porches (northeast and northwest) were partially enclosed in the 1920s to accommodate indoor plumbing. At the gable ends the roof is finished with a wide raking trim board, with shallow boxed raking eaves. The double-hung windows are cased both singly and in pairs, with a shallow sill and crown molding. The east, west, and south gable end elevations are identical, with two pairs of double-hung windows centered in the elevation, one pair on the upper floor and one on the lower floor. The north and south elevations have a large square wood vent near the peak of the gable, cased and topped with crown molding with a profile that matches that of the windows. On the north side of the second story of the house, a bridge-like addition joins the upper story of the farmhouse to the chophouse. On the second story, to the east of the bridge addition, is a pair of double hung two-over-two light windows. On the lower floor there is a door to the kitchen below the addition and a small double-hung window on the east side. There are two chimneys, one at the south end of the house, the other to the north. The northern chimney is corbelled.

The house has seven exterior doors, six of which open onto porches. One bay of the four-bay northwest porch was enclosed during the 1920s for plumbing improvements and a two-over-two light, double-hung window was added in the east side of the wall. The rest of this porch is open. The upper two-thirds of the porch columns are turned, and the bases are square where the porch railing is attached. Pairs of lace-like triangular wood brackets grace the top of each column at the intersection of the porch eave, a decorative form that is repeated as a wall bracket where the porch intersects the wall of the house. There are three doors to the house from the

² No written information was found to assign a definitive date to the construction of the house. An earlier date for the home is supported by the cruciform plan, the mortise and tenon construction of the fir studs into the mudsill, by hewn beams and joists of the first floor framing and by the location of the original farmstead home in the northern portion of the Donation Land Claim, which was owned by Carlos after the divorce, which meant that Sarah and Louis Manning needed to construct a home to live in after their marriage in 1874. The nails which fasten the windows on the lower floor are cut nails. A later date is supported by the presence of circular saw marks on lumber in the upstairs closet, a newspaper fragment found upstairs with a date of 1885, the two-over-two light windows and the lace-like decoration on the porch columns. Window and door hardware is consistent with the late 1870's to early 1880's time period. The Washington County Historic Inventory dates the house at 1883.

³ The mudsill on the south side of the farmhouse was deteriorated and had to be replaced in September of 2005. The cut ends of the original studs embedded in the mudsill were still the color of fresh cut Douglas fir. The replacement mudsill was notched to accept the studs, just as they had been historically.

United States Department of the Interior
National Park Service

National Register of Historic Places Continuation Sheet

Section number 7 Page 3

northwest porch: one opens to the kitchen, the other to the dining room, and the third, facing north, accesses the entry foyer. The upper door panels are two-over-two light, with the lower half in wood.

The fireplace room, located at the south end of the house, is framed on either side by the smaller southwest and southeast porches.⁴ The elevations of these two porches are mirror images of one another; with a single door and a single double hung window on each side. These porches have no porch railings. The north side of the fireplace room contains a wood framed fireplace that extends into the room nearly four feet, with wood mantel and wood paneled sides.⁵ There is a faux grain finish on the wood fireplace surround, the windows, doors and their frames. This finish has been painted over in some places but is generally in good condition. The two end bays of the long northeast porch have been enclosed, the enclosed south bay provides room for the stair landing; the enclosed northern bay provides space for a laundry room adjacent to the kitchen. A single door, matching the doors on the northwestern porch, provides access to the kitchen. A single double-hung window brings light into the adjacent dining room area. Some of the original tongue and groove fir floor is still intact on the porches, but some has been replaced with three-by planking.

BARN

The barn is made up of three connected structures. The southernmost building is a two-story gabled roof barn, built in the early 1880s by Louis Manning. To the north are two, one-story gabled roof additions to the barn, which were added by the Kamna family in the early 1900s.

The two-story barn, built of wood, is approximately seventy feet long and thirty feet wide. The shiplap siding is five inches in width, one-half inch of which is rabbeted and overlapped by the interlocking piece of siding below it. The siding is painted white. There are three small windows on the southern gable end of the barn, a four light, fixed window centered in the gable end, and two, three-over-three light fixed windows evenly spaced to each side and below the level of the eave. On the east elevation, there are six windows, three, four-light fixed windows on the second floor, and three, six-light fixed windows on the first floor. Adjacent to the two southernmost windows on the first floor is a double sliding, wood, barn door with the sliding rail mounted on the exterior. The two pairs of first and second story windows align on the southern edge, but on the northern edge they do not align, as the first floor window is closer to the corner of the barn than the second floor window. The top and side casing for each window is set flush with the level of the siding, but the bottom sill extends three inches to the left and right of the window frame, and projects an inch or so out from the plane of the siding. On the west elevation, a similar pattern of windows exist - the three windows on the first floor frame a smaller sliding door sided with the same siding as the barn.

The barn is built upon hand hewn, log timber posts, and log beams at roughly eight-foot centers, with rough sawn, two-by-twelve fir joists and wide plank, one-by-twelve, fir sub-flooring. Some of the original rock footings for the posts have been augmented with concrete. The bent frames are made up of three posts: the two outer

⁴ The Washington County Historic Inventory refers to this room as the "Parson's Room." Anecdotal evidence indicated that the room, because it had access to the exterior without having to go through the main house, was used to notarize important papers, lay out the dead, and receive religious and business visitors to the home.

⁵ The mason who added the new basement support for the chimney identified the structure and style of the shallow fireplace as a Rumford.

United States Department of the Interior
National Park Service

National Register of Historic Places Continuation Sheet

Section number 7 Page 4

posts measure seven-by-ten inches and an eight-by-eight center post bracketed with four-by-four diagonal members and three-by-eight inch horizontal ties. The tie rafters are two-by-eights. The roof rafters are two-by-fours at twenty-four inches on center, covered with plywood and corrugated metal roofing. The exposed raking soffit overhangs the walls by eighteen inches.

The interior of the barn is open to the exposed framing. The interior surfaces are unpainted. The floor is one-half-inch by three-inch tongue and groove fir. Seed cleaning and sorting equipment dating from the 1920s to the 1940s is located on the first and second floors of the barn.⁶

The center, one-story barn addition is twenty feet wide and thirty feet long. This addition is sided with board and batten and painted white. It was added by the Kamna family around 1910. The boards are rough sawn one-by-tens, and the battens rough sawn one-by-fours. There is a single sliding door flanked by two, four-light windows on the north elevation (which is covered by the southern addition to the barn), as well as the west elevation. The east elevation has two, four-over-four light, fixed windows. The sill heights of these two windows do not align. The building footings are large stones supplemented in places by concrete piers, with log beams running east to west. The barn is framed with eight-by-eight posts tied together with three-by-eight horizontal intermediaries. The board and batten siding is fastened to these intermediate members. The floor is one-by-twelve planks. The roof rafters are full dimension two-by-sixes with tie beams at four feet on center. The roof is covered with plywood, and then metal roofing. The exposed raking soffit overhangs the wall by approximately eighteen inches. The framing of the barn is exposed on the interior and has been painted in some places. This barn addition is currently used for storage.

The southern, one-story addition to the barn is approximately twenty-feet wide by twenty-feet long, covered with tongue and groove siding. The footings for the structure are twelve-by-twelve beams placed directly on the soil. Atop these beams are a series of peeled logs, flattened on the bottom to rest solidly on the foundation beam. Each log is nearly forty-four inches apart. Two-by-eight, tongue and groove siding is attached to six-by-six columns located ten feet apart. A large sliding door opens to the south side of this addition, and there is a man-door on the north elevation adjacent to the intersection with the middle barn addition. The interior of the structure is unpainted, with exposed open framing and a concrete floor. The addition dates from about 1920 and was built by the Kamna family. It was used to load and unload seeds and crops into the barn and for seed sorting in an area protected for the weather. This area of the barn is currently used for storage.

CHOP HOUSE (WOODSHED)

The chop house (also called the woodshed) is a one-story, wood frame, gabled roof building located just north and slightly to the west of the farmhouse. It was traditionally used for chopping and storing wood, but was also used as a play area for the Kamna children. The building dates from the early 1900s, and was built during the time the Kamna family lived on the farm. To the south, the upper loft of the woodshed attaches to the second

⁶ The grain cleaning equipment separated out grasses, peas and other seeds from wheat, oats and other grain crops. The screenings would be used for farm feed for chickens, sheep, horses, cattle and hogs. The "Super 47A" was manufactured by A.T. Ferrell & Company in Saginaw, Michigan. It was purchased through Reid-Strutt Company, Inc. at 1015 S.E. Stark Street in Portland. Reid-Strutt also provided parts (wire screens, rollers, spouts) for the machine. Receipts and manuals found in the barn provide documentation for the equipment.

United States Department of the Interior
National Park Service

National Register of Historic Places Continuation Sheet

Section number 7 Page 5

story of the farmhouse with an ascending stair and a gable-roof, bridge-like addition. The north wall of the chop house has two doors, located at the east and west edges of the elevation. There is small, fixed, square, four-light window centered in the gable on both the north and south elevations. The window on the north has been obscured with paint. On the north elevation, a pair of French doors was added during the 1970s.

The southern, one-quarter of the chop house was originally two steps below the floor level of the rest of the building with a concrete floor. This smaller low area contained the stairs, an unfinished half-bath begun in the 1970s, and storage under the stair landing above. A built-up thick wood plank floor covered the northern three-quarters of the space. A woodstove with a concrete and river rock hearth installed in the 1970s was removed from the northeast corner of the chop house, as was the interior sheetrock.⁷

The roof is framed with two-by-six rafters and with tie beams at twenty-four inches on center, sheathed in plywood and covered with composition shingles. The ceiling is vaulted on the interior with the tie beams are exposed. The walls, ceiling, and ties are painted white, but the floor is unpainted. The room is currently used as adjunct living space for the farmhouse.

CHICKEN HOUSE

The chicken house is a gable roof, wood frame building, twelve and one-half feet wide by twenty feet long. The building is covered with five inch wide shiplap siding and roofed with composition shingles. The building dates from about 1920. A shed roof lean-to covered in vertical siding extends eight feet to the west on the side of the building, six feet wide with a corrugated metal roof. This addition dates from the 1970s. A large single door nearly five feet wide provides access to the interior space on the south elevation of the structure. The floor is dirt, and the interior is open to the framing. There are two window openings on the east side, and one centered on the north facing gable end of the building. Some of the window openings are boarded up, and none contain any glass. The chicken house is currently used as a shelter for two household goats.

POTATO SHED

The potato shed is a gable roof, wood frame building, sixteen feet wide by twenty-two feet long. It is covered in shiplap siding, which has been painted white. It dates from about 1910, and was used to store crops. The roof is covered in composition shingles, and there is a wooden ventilation chimney located in the center of the roof. A four-light, fixed, square window is centered in the upper gable end, and a forty-inch wood door is located on the far west portion of the south elevation. There is one, three foot square window on the east elevation. The wood framing rests directly on the soil, and the floor surface of the building is concrete. The interior is open to the framing, and the wood is unpainted. The potato shed is currently empty.

⁷ Removing the sheetrock revealed some chalk writing on the interior wood siding of the Chop House. The words "Edgar Kamna, Hillsboro" are written on the east wall, and the interior horizontal wood siding of the wall of the foyer has lists of the first names of Kamna children and cousins, along with the names of their teachers. These chalk writings have been documented and will be preserved.

United States Department of the Interior
National Park Service

National Register of Historic Places Continuation Sheet

Section number 7 Page 6

SMOKEHOUSE

The smokehouse is a wood frame, gable roof building, eight and one-half feet wide by ten and one-half feet long, dating from approximately 1910. The building is covered with shiplap siding and is painted white. Split cedar shakes cover the roof. There are two diamond-shaped ventilation openings near the top of the gable end on both the north and south elevations. In contrast to the adjacent potato shed and chicken house, the entry door to the smokehouse is centered on the eave (west) elevation rather than the gable end of the building. The wood framing for the building rests directly on the soil, and the floor surface of the building is dirt. Inside are birch beams. The smokehouse is currently empty.

PRIVY

The privy is the smallest outbuilding on the Manning-Kamna Farm. It is approximately six feet wide by eight feet long. The peak of the gable roof runs east to west. The building is clad with the same shiplap siding and split cedar shake roofing material as the smokehouse. The entry door to the privy is centered on the west (eave side) elevation of the building. On the north and south gable ends of the building, four, two-inch diameter holes are drilled near the top of the elevation in a diamond pattern for ventilation, with one additional hole centered in the elevation at the level of the eave. Inside, along the east wall of the building, is a wooden bench approximately eighteen inches high, with three circular holes. The building is built with wood framing sitting on the soil. The privy dates from around 1900 and was used by the Kamnas and their workers until the 1950s.

CANNING SHED

The canning shed is a fourteen-foot, square, brick building covered with stucco, located less than ten feet from the east side of the farmhouse. The stucco is unpainted. The roof is a symmetrical hip roof covered with composition shingles and marked at the center with a square wood ventilation chimney. The top of the exterior walls at the level of the eaves have a wood cornice molding and a boxed eave trimmed with wood molding. A four-light, fixed window is centered in the east elevation of the building. The door to the canning shed is on the south edge of the west elevation, facing the farmhouse. The canning shed was used as a summer kitchen, as well as a place for canning and preserving food. It dates from the late 1800s and is currently used as a garden shed.

PUMPHOUSE

The pumphouse dates from around 1910. It is located between the farmhouse and the garage, along the southern edge of a fenced, rectangular enclosure for the sheep. This enclosure is bordered by the pumphouse and chop house on the south, and the chicken coop on the north. The foundation of the pumphouse is brick, the walls are wood framed, and the hip roof is covered with composition shingles. The building is clad with shiplap siding, and the eaves are open with the rafter tails exposed. A small shed roof extends from the center of the south elevation to allow headroom for, and to partially shelter, the front entry door. A three-foot, square window is centered on the west elevation. Centered on the north elevation is a shorter door, which opens onto the goat enclosure. Inside the building is a brick-lined well, which currently provides irrigation water for the premises.

United States Department of the Interior
National Park Service

National Register of Historic Places Continuation Sheet

Section number 7 Page 7

GARAGE

The garage was built during the 1920s. The twenty-four foot by sixteen-foot building clad with narrow weatherboard siding has a gable roof. The roof is covered with composition shingles, and the eaves are open with exposed rafter tails. A ten-foot wide, double garage door is centered on the south facade of the building. Three decorative brackets frame the roof on each gable end. A single, three-foot wide, fixed window is centered on the east and west facades of the garage. A three-foot wide, double-hung window is centered on the north elevation. The building is used as a shop and for car storage.

REHABILITATION PLANS

The current owner has the following short term rehabilitation plans for the Manning-Kamna Farm:

- Provide a foundation and cellar for the farmhouse
- Provide a foundation and floor framing for the chophouse
- Stabilize the roof and foundation of the smokehouse
- Stabilize the roof and foundation of the privy
- Repair deteriorated and damaged floor at the southwest corner of the two-story barn
- Preserve the large Pignut Hickory (*Carya glabra*) located in the west yard near the garage⁸
- Preserve the two large Black Walnuts (*Juglans nigra*) flanking the entrance to the west yard of the farmhouse.⁹

Long term rehabilitation plans for the property include preparing a plan for the preservation and adaptive reuse of the barn, as well as prioritizing and providing for the stabilization and long-term preservation of all the outbuildings.

⁸ This species was grown in the Midwestern U.S. during the 1800s, both for shade and for nut bearing. This tree is also called a Broom Hickory. It is not native to Oregon.

⁹ An arborist specializing in historic trees has said that the walnuts are 100 years and 150 years old, respectively. The Black Walnut is not native to Oregon.

Manning-Kamna Farm
Name of Property

Washington Co., OR
County and State

8. Statement of Significance

Applicable National Register Criteria
(Mark "x" in one or more boxes for the criteria qualifying the property for National Register listing).

Areas of Significance
(Enter categories from instructions)

- A Property is associated with events that have made a significant contribution to the broad patterns of our history.
- B Property is associated with the lives of persons significant in our past.
- C Property embodies the distinctive characteristics of a type, period, or method of construction or represents the work of a master, or possesses high artistic values, or represents a significant and distinguishable entity whose components lack individual distinction.
- D Property has yielded, or is likely to yield, information important in prehistory or history.

AGRICULTURE
ARCHITECTURE

Period of Significance

1883-1953

Significant Dates

1883
1903

Criteria Considerations
(Mark "x" in all the boxes that apply)

Property is:

- A owned by a religious institution or used for religious purposes
- B removed from its original location
- C a birthplace or grave
- D a cemetery
- E a reconstructed building, object, or structure
- F a commemorative property
- G less than 50 years of age or achieved significance Within the past 50 years

Significant Person
(Complete if Criterion B is marked above)

N/A

Cultural Affiliation

N/A

Architect/Builder

Unknown

Narrative Statement of Significance
(Explain the significance of the property on one or more continuation sheets)

9. Major Bibliographical References

Bibliography (Cite books, articles, and other sources used in preparing the form on one or more continuation sheets) See continuation sheets

- Previous documentation on file (NPS):
- preliminary determination of individual listing (36CFR67) has been requested
 - previously listed in the National Register
 - previously determined eligible by the National Register
 - designated a National Historic Landmark
 - recorded by Historic American Buildings Survey
 - recorded by Historic American Engineering Record

- Primary location of additional data:
- State Historic Preservation Office
 - Other State agency
 - Federal agency
 - Local government
 - University
 - Other
- Name of repository: _____

United States Department of the Interior
National Park Service

National Register of Historic Places Continuation Sheet

Section number 8 Page 1

STATEMENT OF SIGNIFICANCE

SUMMARY

The Manning-Kamna Farm is nominated under Criterion A for its association with the development and evolution of agriculture and family farm life in Washington County, Oregon, from the completion of the farm's house in 1883, to the purchase of the farm's last large piece of machinery in 1953. The property is also nominated under Criterion C, for the collective architectural significance of the ten component buildings on the site. The nearly 125 year old Manning-Kamna Farm not only exhibits the intact resources of a late nineteenth century farm, but also retains structures that are representative of how Oregon farms continued to evolve throughout the early and mid-twentieth century. Through alterations and additions to existing buildings, and the construction of new buildings, the Manning-Kamna Farm demonstrates how farming operations had to be adaptable enough, such as through the adoption of new farming practices and embracing agricultural mechanization, to remain economically viable and prosper.

EARLY DEVELOPMENT OF WASHINGTON COUNTY

Many emigrants came to Oregon and the Willamette Valley for the agricultural opportunities it presented. The open land prized by early Euro-America settlers for farming was the result of the husbandry of people who had lived in the Tualatin Valley for generations. The Kalapuya used fire seasonally to create open areas to encourage growth of their major staple, the camas plant. Burning allowed for more effective seed gathering, easier hunting, and helped make areas more defensible.¹ The practice of burning prevented the growth of dense forest on the valley floor, leaving instead a mixture of grassland and prairie. Thick forests on the surrounding hillsides opened up to grassy plains with rich agricultural potential, a condition that stretched for 100 miles. This land was above the flood plain of the Tualatin River, varied from 20 to 40 miles in width, and was surrounded by the Cascade and Coast ranges.

From very early on, farming in Washington County was focused on production and export, and not necessarily subsistence. By the 1840s, the region's population grew wheat, harvested fruit and garden crops, and raised cattle. The California Gold Rush during the mid-nineteenth century increased the demand for agricultural products, and the price Oregon farmers received for farm goods rose accordingly. By the time emigrants of the 1850s arrived in Washington County, a market system was already in place to deal with crops such as wheat and oats.

Agriculture in Washington County was also about progress. By 1850, a farmer in the community of North Plains (north of Hillsboro) was already using a threshing machine. The following notice about the machine appeared in the *Portland Democrat* in 1858:

¹ This practice continued until the early 1850s; a 1852 survey noted that the land was "much burnt."

United States Department of the Interior
National Park Service

National Register of Historic Places Continuation Sheet

Section number 8 Page 2

Hull, Knapp and Co. will illustrate at the farm of Mr. A. Zachry, on Tualatin Plains, one of Willard's Patent Seed Sowing and Harrowing Machines and invites all farmers in the vicinity to come and see for themselves the practicability and utility of the Machine.²

Census records indicate that by 1860, the average farm in Washington County included \$170 worth of farm machinery. Also by 1860, the main focus of farming operations was on the production of wheat. Farmers, however, often had difficulties getting their product to market:

All the fragmentary evidence available suggests that the farmers of Washington County were, in terms of their market orientation, relentlessly modern, even if the infrastructure for successful commercial agriculture was poorly developed in the 1850s and even if this orientation went hand in hand with very traditional social and cultural values. The central problem of the farmers of Washington County was securing access to market, not avoiding it.³

Geography separated the farming regions of the Tualatin Plains from connections to markets. On the south side, the Chehalem Mountains made travel to Yamhill and Clackamas County difficult. The Tualatin and Willamette Rivers were barriers to the markets of Oregon City, and the six-hundred foot climb over the Scappoose Hills to the large market in Multnomah County made traveling difficult. For early settlers, a wagon journey to Portland took three days, and even though by 1856 there was a plank road to Portland, it was frequently in poor condition during the winter months.

One of the main concerns of the county government was to provide better roads and transportation to increase accessibility to markets. Their role was to bring together private energies in the public interest, as the government took on services that ordinary citizens acting together could not achieve. By 1857, the county had established twenty-one road districts. Citizens petitioned the county government to establish roads, and were reimbursed for reviewing road conditions and reporting to the commissioners.⁴ Transportation, however, throughout the late nineteenth century was difficult, with roads being not much more than trails and mostly impassable in bad weather.

By 1860, Washington County was producing over 65,000 bushels of wheat and other important crops, including oats and potatoes.⁵ The cultivation of rye was rare, but as the decade progressed, buckwheat and barley were grown in greater quantities. Vetch was introduced in 1870 by William Chalmers, and was widely grown for forage and soil restoration. Corn, peas, beans, and potatoes were almost universally grown. Wheat, however, was the favorite staple crop for Washington County farmers. Early farmers worked the soil with wood plows, sowed the wheat by hand, and threshed the wheat by placing it on the ground, driving horses or livestock over it, and allowing the wind to separate the wheat from the chaff.

² *Portland Democrat*, May 6, 1858.

³ Paul Bourne and Donald DeBats, *Washington County: Politics and Community in Antebellum America* (Baltimore: The Johns Hopkins University Press, 1992), 93

⁴ The January 8, 1875 *Washington Independent*, reported the results of a January 6th meeting of the County Commissioners, in which two petitions to establish roads were granted, and Elias Newton was paid \$2 for "reviewing road(s)."

⁵ *Agriculture of the United States*, US Bureau of the Census, 8th Census, 1860, Vol. 2.

United States Department of the Interior
National Park Service

National Register of Historic Places Continuation Sheet

Section number 8 Page 3

In the 1860 census, over two-thirds of respondents were identified as farmers or farm laborers. Individuals who listed other professions often included "farmer" as well. Many skilled workers, such as blacksmiths, millers, wheelwrights, and carpenters, were occupations connected to agriculture. In 1860, the town of Hillsboro had no bank, four stores, two wheelwrights, and a boardinghouse, with less than 15 percent of the total population of the county living in town.⁶ But as market connections increased, the town of Hillsboro developed and grew. In 1872, the Willamette Valley Railroad came to Hillsboro, and between 1870 and 1875, over \$41,000 in improvements were expended in Hillsboro. As a result, the town doubled in size.⁷

By 1876, the town of Hillsboro was incorporated, and over the next ten years an opera house, hotel, two blacksmiths, two general stores, one drug store, and four saloons were constructed.⁸ By 1885, nearly all of the lower Tualatin Valley had been settled by large productive farms surrounding agricultural communities. The south central Tualatin Valley was the last area of Washington County to be settled. Here, local settlers established small scale, diversified farms in what was an isolated agricultural area. The settlers in this corner of Washington County were a necessarily independent group of farmers who largely bartered and traded amongst themselves in labor, timber, and a large variety of crops and livestock.⁹

The Manning-Kamna Farm generally followed the broad patterns of development of Washington County since its inception in 1851. From the mid-1880s and through the turn of the century, the Manning-Kamna Farm evolved to include a farmhouse, a large barn, and associated outbuildings typical of late nineteenth century agricultural properties in Washington County. Agricultural pursuits in the area were well established by this time, and such changes as a finished railroad, improved road systems, and the gradual incorporation of new technologies into farming practices, would not only help quicken the pace of agricultural operations, but also bring economic gains in the coming years.¹⁰

BEGINNINGS OF THE MANNING-KAMNA FARM

The current site of the Manning-Kamna Farm traces its lineage back to the original 639.82 acre donation land claim of Carlos Dudley Wilcox and Sarah Ann Elizabeth Scoggin Wilcox. Both traveled to Oregon as children - Elizabeth in 1845 at age nine, and Carlos in 1847. Elizabeth Scoggin was fifteen years old when she married Carlos Wilcox on July 3, 1851.¹¹ Carlos and Elizabeth settled on Claim 59, located about four miles to the southeast of Carlos' parent's property. The Donation Land Law of 1850 gave 320 acres to each single settler, and 640 acres to a married couple, with half of the land registered in the husband's name, and half in the wife's name.¹² Carlos and Elizabeth settled into a house in the northeast corner of Section 19, which is shown on an

⁶ This includes the towns of Forest Grove and Hillsboro, which Bourne and DeBats characterize at this time as "villages." The total population in Washington County in 1860 was 2,766 compared to the 1860 population of Portland which was 2,874

⁷ "Prosperous," *Washington Independent*, January 8, 1875.

⁸ Compare to summary of Myron Eells in 1859.

⁹ Barbara Fitzgerald, "Waggener, J.S. and Melinda, Farmstead" National Register of Historic Places nomination, 2002, Sec. 8, p.1.

¹⁰ Lou Ann Speulda, "Oregon's Agricultural Development: A Historic Context, 1811-1940" (Salem: State Historic Preservation Office, 1989), 44.

¹¹ Due in large part to the Donation Land Law, early marriage was common in Washington County during the 1850s. Women married as early fourteen. In 1860, the median age of marriage for women was seventeen, at a time that the national average was twenty-three.

¹² Residents must have arrived in the Territory prior to December 1, 1850.

United States Department of the Interior
National Park Service

National Register of Historic Places Continuation Sheet

Section number 8 Page 4

1851 copy of a General Land Office map. The house was adjacent to a section of cultivated field on the eastern side of Claim 59.¹³

The census of 1852 lists Elizabeth individually as owing 320 acres of land. Elizabeth came from a farming background, and like many farmers on the Tualatin Plains, she was bound to her family and to her neighbors by the ties of kinship and by shared work. Accounts of the time, however, indicate that Carlos had interests other than farming, including holding the position of postmaster and participating in the California Gold Rush.¹⁴

In 1857, Carlos sold 61.75 acres of land to William Jolly. Newspaper accounts confirm that he was often away from his family, and the Wilcox Family Outline indicates that by 1870 he was living with another woman named Levi Ireland.¹⁵ Petitions for divorce were not uncommon in Washington County, and in 1872, Carlos and Elizabeth Wilcox divorced. Upon her divorce, Elizabeth had title to half of Claim 59. Carlos sold the northern half of his 320 acres in 1874.¹⁶

On January 29, 1874, Elizabeth married Louis Manning in Multnomah County, Oregon.¹⁷ Born in New York in 1836, Louis Manning had been on his own since he was thirteen years old. Manning had traveled and worked in many places, including in Ohio and Kansas, raised horses on Pike's Peak, prospected for gold in Idaho, built flatboats in Portland, and worked on a stock and dairy ranch on Sauvie Island. Before marrying Elizabeth, he raised trotting and stock horses in Eastern Oregon. The typical Washington County kinship connections probably accounted for their meeting, as Elizabeth's family had a number of connections in Eastern Oregon.¹⁸

THE FARM UNDER THE MANNINGS

The business of Washington County during the late nineteenth century was the business of farming, and Louis took to it with characteristic zeal, moving to Hillsboro on "320 acres north of the city which he put in a high state of cultivation."¹⁹ Louis Manning had experience in raising livestock and raising horses, but in Washington County, livestock was always secondary to raising crops. Manning realized this, and he and Elizabeth

¹³ Elizabeth and Carlos had five children in ten years: Martha Mariah (b. January 30, 1853), James Marion (b. September 1, 1854), William Lafayette (b. January 2, 1857), John Edgar (b. September 20, 1860), and Mary Letitia (b. January 28, 1863).

¹⁴ "Carlos Wilcox," Reference Card, Oregon State Historical Society, Portland, Oregon. By 1852, weekly mail began between Portland, Hillsboro and Lafayette. By 1853 more Post Offices were established, including Tualatin, Amity and Dayton.

¹⁵ Arthur Wilcox, "Wilcox Family Records," 2000, Judy Goldman Collection, Washington Historical Society, Hillsboro. This outline is a summary of census records, obituaries and historical accounts. The May 1875 *Washington Independent* newspaper list a suit for divorce, A.J. Ireland versus Levi Ireland.

¹⁶ Carlos also remarried; on June 24, 1875 he married Miss Melinda Hanley at a parsonage in Hillsboro. (*Washington Independent*, July 1, 1875.) In 1905 Carlos was living in Klickitat, Washington.

¹⁷ There is a discrepancy in the recorded year of Elizabeth and Louis' marriage. Various sources list it as 1872, 1873, and 1874. The 1874 date (from Elizabeth's obituary) is used here because of its specificity as to the month and year. The wedding was held in Portland at the home of her sister, Martha Scoggin Comstock.

¹⁸ James W. Chambers, Elizabeth's stepfather, is buried in Wheeler County and listed as "the first white settler in the Fossil area in 1869 or 1870." (*Oregon Burial Site Guide, Wheeler County* compiled by Dean H. Byrd, Binford & Mort, 2001.) W.L. Wilcox, Elizabeth and Carlos' son, was "employed by his uncle in the stock business east of the mountains and later started a business stock raising for himself." He also served in the State Legislature in 1888. Elizabeth's sister, Mary J. Hoover, lived in Fossil.

¹⁹ "Splendid Citizen Dies Near Hillsboro," *Hillsboro Argus*, Hillsboro, Oregon, November 24, 1910.

United States Department of the Interior
National Park Service

National Register of Historic Places Continuation Sheet

Section number 8 Page 5

continued to farm their claim and raise Elizabeth's five children. Nearly a decade before, the *Oregon City Argus* espoused:

No man but a simpleton would think of retaining his five hundred acres of land for pasture. Most have abandoned the idea of stock-raising where range is principally confined to enclosures, and where the value of a given amount of range is fully proportioned to the worth of the same area for producing grain. The experience of the people in the Tualatin Plains has fully demonstrated that at no distant day the business of stock-raising in this valley will be entrusted to those who live upon the outskirts and where, in addition to their own rugged claims, too rough for successful farming ...²⁰

Even though Louis had much past experience with raising livestock, it was a secondary concern for the family. Most farm families had a few milk cows, some beef, and perhaps a small herd of sheep, which were mainly for household use.

After the Manning's marriage in 1874, the development of urban centers and easier transportation helped the farm to prosper, and gave Louis and Elizabeth the means to build their Late Victorian, cross-wing western farmhouse on the site between 1876 and 1883. According to author Philip Dole:

The new farmhouses built between 1875 and 1900 have been called, collectively, "Western farmhouses" because similar farms seemed to have appeared at about the same time across the rural American West. Whatever style they adopted, these houses were roughly alike in volumetric organization, plan layout and disposition of ornament.²¹

Typical of the style, the Manning farmhouse is generally of a cruciform plan, with double gabled-ells on each side to provide space for additional porches that demonstrate the versatility of the utilitarian house. The Manning house was not only an expression of utility, and comfort, but also of individuality, as seen through modest ornamentations, such as pairs of decorative lace-like triangular wood brackets at the top each column at the intersection of the porch eave, a decorative form that is repeated as a wall bracket where the porch intersects the wall of the house, wide raking board trim, windows topped with crown moulding, and ornamented pilasters at the corners of the house. As Dole explains, "such a house . . . shows the prosperity, sophistication and/or aspirations of the farmer" during this period.²²

Through their home, the Mannings increased opportunities for social and cultural activities such as entertaining friends, family, and business associates. The layout and design of the wood fireplace surround and faux graining on the woodwork in the fireplace room indicate its function as a formal room for entertainment and business uses. The design of the Manning's home exhibits their pride in the farm, but also demonstrates the practicality, and utility, of having four porches with views of the farmscape. The Mannings also planted the

²⁰ *Oregon City Argus*, February 26, 1859.

²¹ Philip Dole, "Farmhouses and Barns of the Willamette Valley," in *Space, Style and Structure: Building in Northwest America* Vol. 1 (Portland: Oregon Historical Society, 1974), 227.

²² Dole, 229. Elizabeth and Louis had the means to afford good silver, mostly likely used in entertaining guests, as demonstrated through a very ornate fork found in the barn that dates from 1901 from George H. Rogers Company, Nichols Silver.

United States Department of the Interior
National Park Service

National Register of Historic Places Continuation Sheet

Section number 8 Page 6

large Black Walnut tree and the Pignut Hickory that provide shade on the west side of their residence, and constructed the existing canning shed during the late nineteenth century.²³

TRANSITION OF THE FARM TO THE KAMNA FAMILY

The Kamna family came to Washington County with the idea of participating whole-heartedly in the life and business of farming. Born in 1870 in Bassen, Hanover, Germany, Hermann Kamna came to Washington County in 1886 with his father, Henry (Heinrich) Kamna, his brothers, John and Henry Jr., and two sisters, Bettie and Rebecca.²⁴ Herman and his brothers were connected by business, as well as family, and they worked and celebrated together. Brothers Henry and John married sisters at the home of their father in Blooming, Oregon, on November 15, 1889.²⁵ Herman married Anna Rehse a few years later on February 14, 1900.

As early as 1897, Herman and his brothers began leasing farm land. On May 5, 1897 Herman leased land from James E. Lewis and wife.²⁶ That same year, he leased 120 acres east of McKay Creek, and in 1902, Herman leased 364 acres of the H. Lindsay Donation Land Claim along with his brother, John. On September 10, 1904, he signed an agreement to rent Dell and Emily Young's farm in Hillsboro. On June 20, 1903, the deed transferring ownership of 175 acres of the original Wilcox claim to Herman Kamna was recorded.

When the Mannings sold their land to Herman Kamna in June 1903, Elizabeth and Louis reserved a small tract for themselves where Louis "spent his declining years," as they wanted live on their land until the end of their lives.²⁷ The Mannings retained ownership of this small parcel that contained their house, which they lived in at least until Louis' death in 1910.²⁸ Elizabeth Manning's obituary indicates that she never left "the farm north of Hillsboro," and that it had "been her home ever since" her marriage to Carlos Wilcox in 1851, until her death in 1916.²⁹

If Elizabeth and Louis Manning were of the "old school," then the Kamna family brought with them something of a "new school." The Kamna's stewardship of the farm, as well as their work and activities, mirror the agricultural and family farm life of Washington County through the middle of the twentieth century. Like Louis and Elizabeth, Herman Kamna's connection to home and farm was powerful.³⁰ Like the Mannings, Herman died in the farmhouse that had been his home.

²³ Arborist David Halstead, BS, CA, estimates the age of the trees at between 120 and 150 years, which dates them to the time of the Wilcox/Manning era. Neither tree is a native species.

²⁴ Some accounts mention three sisters.

²⁵ The town of Blooming is 5 miles west of Hillsboro. Henry married Becka Segelken; John married Martha Segelken.

²⁶ *Indirect Index to Deeds*: Washington County, p. 141.

²⁷ *Hillsboro Argus* November 24, 1910, obituary of Louis Manning. "Louis Manning died on November 1, 1910 after a long illness."

²⁸ Portions of Elizabeth's original land were sold before the 1903 sale of 175 acres to Herman Kamna, some to Maria Dalton in 1888, and some to a Mr. Rice in 1899.

²⁹ "Pioneer Taken Monday After A Long Illness" *Hillsboro Independent*, Friday, April 14, 1916. Toward the end of her life Elizabeth spent time at her daughter Letitia's home in Hillsboro.

³⁰ His legal name was "Hermann", in most newspaper reports of the time he is listed as "Herman."

United States Department of the Interior
National Park Service

National Register of Historic Places Continuation Sheet

Section number 8 Page 7

After their acquisition of the farm in 1903, the Kamna family completed several building projects, including two, one-story gabled roof additions to the original 1880s barn, a privy, a simple gabled roof chop house (woodshed) with a bridge-like addition that connected it with the second story of the house, a potato shed (built to store a crop that was easy to grow and sustained the family), and a smokehouse used to preserve meat that hung from the birch rafters (perhaps flavored with the burnt wood of the Pignut Hickory planted in the front yard). Like the building activities that occurred on the Manning-Kamna Farm, the decades between 1890 and 1910 brought more growth to the Washington County. In 1908, with the arrival of the Oregon Electric Railway, Hillsboro began to change from a farm and market town to a place more connected with the Portland metropolitan area. Between 1900 and 1910, Hillsboro doubled in population. Over the next decade, sewers, phones, a new water supply, and more streets and sidewalks were added to the city.³¹

Even though the Kamna family purchased the farm in 1903, it was not until sometime between 1910 and 1916, after Louis and Elizabeth Manning passed away, that the Kamna family was able move into the farmhouse. The 1910 census shows that Herman had two hired hands, but in keeping with the tradition of Washington County, work on the Kamna farm was also done by family members, friends, and neighbors. A 1909 photograph documents a barn-raising at Henry Kamna Senior's farm, with Henry Junior, John, Herman Kamna, and forty other "helpers."

The raising of family and the business of farming went hand in hand. Herman and Anna Kamna had three children: Edgar, Lucille, and Arline. A fourth child, Francis, later died in an accident on the farm at age three.³² The participation of the Kamna children in farming was often imbued with a sense of joy and energy, however, rather than tragedy. The Kamna children and cousins played in the chop house, a place to cut and store wood that was so important for fuel, as well as to slaughter animals for food. In the chop house, the Kamna children wrote out their names, and the names of their teachers and the subjects they taught in chalk on the interior wood wall planks.

The overall success the Kamnas had with agriculture is reflected in other changes made later to the home and farm. The simple, but well-designed, farmhouse embraced the outdoors with windows and porches that engaged the landscape in all directions. From the farmhouse, one could observe all of the individual buildings that represented the wide range of tasks associated with family farming, each constructed to meet very specific needs. Even during the 1920s, when the Kamna's updated the farmhouse to accommodate indoor plumbing, the adjacent privy remained next to the house. The canning shed operated as a summer kitchen for feeding farmhands at harvest time or those who came for a barn-raising, but also acted as a place to keep food for the family.

³¹ There was a market center, two newspapers, two hotels, four banks, and no saloons.

³² Francis was born December 24, 1900. The youngest child, Francis would follow his father around the farm and observed the business of farming. When Francis was about three years old, his father returned from bringing goods to town, and "missed the little fellow." The *Hillsboro Argus* of October 27, 1904 tells the sad story: "The parents searched high and low, but to no avail, when he was found in a barrel, head downward, and dead, having suffocated. He had seen his father go into the barrel, in which were shorts and stuff mixed with water and refuse, for the stock. He placed a box against the barrel, lifted the top, and evidently tried to take out a bucketful. He fell into the barrel and could make no outcry."

United States Department of the Interior
National Park Service

National Register of Historic Places Continuation Sheet

Section number 8 Page 8

Other changes to the farm reflected the changing technological innovations of the period, including running water in the kitchen and a full bathroom that necessitated the remodeling of older homes. The north side of the west porch of the Manning-Kamna farmhouse was enclosed during the 1920s to provide for indoor plumbing. Likewise, the north side of the east porch was enclosed to provide for more kitchen storage. The pumphouse helped protect the family's water source, and the chicken house, constructed during the 1920s, provided for raising domestic animals, such as chickens and pigs. The "newest" building addition to the farm, the garage (constructed during the 1920s), reflected the increasing success of the farm. The garage demonstrates that as time progressed, and the farm prospered, more capital was available to invest in buying and maintaining automobiles.

AGRICULTURAL MECHANIZATION ON THE MANNING-KAMNA FARM

Agricultural progress had been part of Washington County agriculture since the 1850s, and was very much a part of the Manning-Kamna Farm. Scientific experimentation and the search for knowledge became institutionalized when the Oregon Legislature designated Corvallis College as the state's agricultural college in 1868. By 1870, a curriculum was in place, and in 1887, the federal government funded the Oregon Agriculture Experiment Station, a research organization administered by the College. In 1908, the college became a professional school of agriculture, growing to include ten departments by 1928. The Kamna family embraced the technological gains associated with this growth in agricultural knowledge and scientific investigation.³³ The *Hillsboro Argus* reported on "new forms of agriculture" and ran articles about experimental farming and flax production, as well as documenting progress for the town of Hillsboro as a whole.³⁴

More specialized machinery became associated with the business of farming, and a seed sorter, still present in the upper level of the barn, dates from the 1920s. Papers and pamphlets found in the barn include bulletins from the Oregon Agricultural College Experiment Station.³⁵ Edgar Kamna, Herman's son, graduated from the agricultural program at the Oregon State College. Under the direction of the next generation of Kamna farmers, the business of agriculture continued to grow in the decades beyond the 1920s, and Edgar Kamna was very active in the business.

Farmers in the Hillsboro area dealt with the Imperial Seed and Grain Company, which, according to company letterhead, manufactured "Imperial Poultry and Dairy Feeds", and were "Dealers in Seeds, Feeds, Grain and Hay." The rambling white Manning-Kamna barn was where crops were sorted, weighed, certified, bagged, and readied for transport or assay. Entries in sales books and seed account books show the kinds of crops that were grown at the time, including "Imperial Oats," "Chewing's Fescue," "Red Creeping Fescue," "Tall Fescue," ryegrass, vetch, and sub-clover. The lists show the names of individuals who brought crops to the barn and

³³ During the 1890s, the U.S. Department of agriculture was "touting Oregon and Washington as good flax growing areas." Harvesting and processing the crop was labor-intensive, so planting tended to be limited. The Works Progress Administration helped to construct three cooperative processing plants; the industry grew during World War II and declined after the war. Some documentation about flax as a crop was found in the barn; there was no indication that it was ever grown on the farm.

³⁴ For example, the October 27, 1904 *Hillsboro Argus* reported that six septic tanks had already been built in the City, and that as a substituted for sewers they were "really more sanitary."

³⁵ H.A. Schoth and G.R. Hyslop, "Common Vetch," *Station Bulletin* 213, June 1925, Agriculture Experiment Station, Corvallis, Oregon

United States Department of the Interior
National Park Service

National Register of Historic Places Continuation Sheet

Section number 8 Page 9

where the crops were grown; for example "Edgar Kamna, East Field", "Edgar Kamna, Young Place," or "John Hare, Lot 103E."³⁶

Documentation found in the barn also shows the wide range of activities and services that were provided, including a "Shipping Scale Weights" form that recorded the weight and number of sacks of a particular crop, a "Cleaning Report" that noted the inbound weight of the sacks and the "out turn" weight of peas, vetch, peas and vetch, mixed vetch, oats, barley, heavy screenings, light screenings, and straw.³⁷ Carbon copies of paperwork, sent to seed laboratories for analysis, indicate Imperial Seed and Grain Company sent fescue to Oregon State College for purity testing and seed sent to E.F. Burlingham and Sons Seed Laboratory in Forest Grove for purity analysis and germination testing. Copies of "Seed Certification Sampling Certificates" from the Oregon State College Extension Service show the results of tests for purity, purity with germination, or germination only. The grower, variety, generation, lot number, number of sacks, weight of fescue, and where the test was performed were also noted. Heavy paper tags from Imperial Feed and Grain Company were attached to individual sacks of seed that had been tested and certified. These tags show the variety, purity and germination percentage, percent of weed, crop, and inert matter, and the date tested. Detailed instructions for taking soil samples, along with small boxes used to send the soil samples to the Oregon State College Soil Testing Laboratory, were filed in the barn. A "Soil Sampling Information Sheet" listed the type of soil, irrigation, crops from the past three years, use of lime and/or manure, and other information about the land from which the sample was taken. This paperwork reflects a high level of organization, a diversity of tasks, and a detailed and scientific process of record-keeping used at the Manning-Kamna Farm.

Research and investigation continued to be important to the Kamnas during the 1940s and 1950s, as evidenced by *Oregon State College Extension Bulletins* that were consulted for their recommendations. These publications gave advice on many topics from "The Control of Quackgrass" by cultivation and chemical means, to "Selective Weed Control in Grain and Grass Crops." Knowledge of chemical products was also part of the Manning-Kamna Farm, as evident through informational material on soil fumigants from the Shell Chemical Corporation found in the barn.

The Kamna family farmers also continued to invest in machinery in support of their farming services. They bought "'Fairbanks Scales" manufactured in Vermont for weighing sacks. They purchased grain cleaners, such as a "Carter Disc Separator" manufactured by Hall-Carter Company in Minneapolis. The Kamna barn had literature for "Prater Gradual Reduction Grinder" made in Chicago, which would break down material to a desired state of fineness, and brochures for "Clipper Dustless Cleaners," "Clipper Single Fan Cleaners," and more sophisticated machines called "Clipper Super Cleaners." In 1953, Edgar Kamna purchased the last large piece of equipment for the farm, the "Super Cleaner 47A" manufactured by A.T. Ferrell and Company, an impressive machine that still stands in the barn today. Receipts indicate that machinery was maintained and replacement parts purchased as needed, including wire screens, rollers, and sheet metal parts, purchased from Reid-Strutt Company, Inc. in Portland. Reid-Strutt also provided equipment lists and brochures to the Kamnas.

³⁶ The "Edgar Kamna, Young Place" was the farm Herman Kamna leased in 1904. This list reads like a "who's who" of Washington County farmers of the time.

³⁷ "Sacks" is spelled "sax" on the Company's paperwork.

United States Department of the Interior
National Park Service

National Register of Historic Places Continuation Sheet

Section number 8 Page 10

ARCHITECTURE OF THE MANNING-KAMNA FARM

The Manning-Kamna Farm is architecturally significant for its ten component buildings that are not only representative of late nineteenth and twentieth farming practices, but also of the continuing domestic and agricultural improvement and financial success of the farm and family. While the original farm complex under the ownership of the Manning family seems to have only included the cross-wing western farmhouse, the two-story barn of timber, post and beam construction, and the simple hipped-roof canning shed, the farm under the ownership of the Kamna's received several more associated outbuildings and building additions typical of family farming operations during the first half of the twentieth century.

The entire group of buildings making up the current inventory of the Manning-Kamna Farm represents a typical, multi-unit farm complex. A "multi-unit farm" differs from a "basic farm" in that the property includes a house and at least two outbuildings. Common among grain production farms in the area, the Manning-Kamna Farm consists of several outbuildings that aided in the day-to-day operation of the farm.³⁸ Among these include the farmhouse, barn, smokehouse, garage, pump house, chop house (woodshed), privy, canning shed (summer kitchen), chicken house, and potato shed. The original Manning cross-wing western farmhouse, constructed between 1876 and 1883, is representative of Willamette Valley farmhouses constructed between 1875 and 1900 called "Western farmhouses," so named due their similar physical and temporal appearance in the American West. Although in some ways the Western farmhouse derives its architectural elements from the Rural Gothic Cottage Style of the 1860s, as Dole explains, "the term 'Western farmhouse' designates that extensive group of rather plain rural homes . . . which do not comfortably fit within any national stylistic architectural vogue."³⁹ Although rather plain, the Manning-Kamna farmhouse exhibits some unique detailing characteristic of Western farmhouse types, including crown moulding window casings, a corbelled chimney, turned porch columns, decorative porch and wall brackets, and a fireplace with wood mantel and wood paneled sides.

Characteristically, the two-story, side-opening, gabled roof barn is located in a "back of the house" position on the farm, approximately 171 feet west of the farmhouse.⁴⁰ Two, one-story additions made to the building in around 1910 and 1920 were necessary as the Manning-Kamna farming operation continued to grow and introduced agricultural mechanization processes that dictated an increased use in more specialized farm machinery. The first addition was constructed to house specific agricultural machinery, while the later, second addition, was built as an area to load and unload crops. With the exception of the canning shed, the other associated buildings, including the chop house, privy, potato shed, smoke house, pump house, and garage, were constructed by the Kamna family. These secondary outbuildings do not necessary follow a linear or rectangular spatial arrangement, but are instead massed close to the farmhouse around either the goat enclosure or back yard. All of the buildings, including the farmhouse and barn, are organized along cardinal compass points, as was common practice on many farmsteads in the West.⁴¹

³⁸ Speulda, 68.

³⁹ Dole, 227.

⁴⁰ Speulda, 34.

⁴¹ Allen G. Noble and Richard K. Cleek, *The Old Barn Book: A Field Guide to North American Barns and Other Farm Structures* (New Brunswick, NJ: Rutgers University Press, 1995), 135.

United States Department of the Interior
National Park Service

National Register of Historic Places Continuation Sheet

Section number 8 Page 11

While many of the outbuildings on the Manning-Kamna Farm are more closely associated with the domestic functions of the farmhouse, rather than the agricultural functions of the barn, most, if not all, of these buildings remained necessary features to ensure the success of the farming family. The farm's potato shed is a gabled roof, wood frame building that rests directly on the soil located approximately 106 feet northeast of the farmhouse. The farm's wall-frame, hipped roof pumphouse, set on a brick foundation and clad in shiplap siding, is positioned approximately 53 feet from the northwest corner of the farmhouse, and helped protect the family's water source. The canning shed and smokehouse, in contrast, represent buildings that primarily served to process, rather than just store, food for the farming family. The canning shed, located less than 10 feet from the farmhouse at the northeast corner, is a simple hipped-roof building, built close to the farmhouse, and doubled as a summer kitchen. The smokehouse, a gable roof, rectangular building with two, diamond shaped ventilation openings near the tops of the each gable end, is reminiscent of the upland south smokehouse design.⁴² The wood frame, gabled roof chicken house, located approximately 103 feet north of the farmhouse, also served to process food for the family. Like many outbuildings associated with multi-unit farms that often served different functions than originally constructed for, the chicken house now houses goats. The privy, however, has always served in just one function. The privy on the Manning-Kamna Farm is typical of most privies constructed in North America.⁴³ Distanced from the house to avoid odor, yet close enough to remain convenient, the gabled roof, six-by-eight foot privy is the smallest outbuilding on the farm. Positioned approximately 50 feet from the northeast corner of the farmhouse, the privy also has ventilation holes drilled in a diamond pattern.

The garage may be the latest building constructed on the Manning-Kamna Farm, dating from the 1920s, but it also is one of the more revealing buildings about how the farm had changed both domestically and agriculturally during the twentieth century. The twenty-four-by-sixteen foot, gabled roof building with exposed rafter tails, and clad with narrow weatherboard siding, provided shelter for expensive automobiles that had quickly replaced reliance on the horse and carriage by this period. Built after the initial construction of the farmhouse, but clearly occupying an important location on the farm, the garage is sited approximately 112 feet parallel to the west of the house, at the end of the gravel driveway.

FARM COMPARISONS

Imbrie Farm, Cornelius Pass Road, Hillsboro, Oregon (Listed in NRHP 2/17/77):

The Imbrie farmhouse was built at an earlier time than the house on the Manning-Kamna Farm, but its function, location, and relationship to adjacent buildings is similar. The Imbrie farmhouse was constructed in 1866 by the Imbrie brothers, two of the first permanent settlers in Washington County. The site was home to six generations of Imbries. The site also has a granary that dates from the mid-1850s, and an octagonal barn built in 1913.

Philip Foster Farm, Eagle Creek Road, Eagle Creek, Oregon (Listed in NRHP 8/15/80):

⁴² Noble and Cleek, 148.

⁴³ Noble and Cleek, 138-139.

United States Department of the Interior
National Park Service

National Register of Historic Places Continuation Sheet

Section number 8 Page 12

Like the Manning-Kamna Farm, the Foster Farm was a donation land claim. The two-story farmhouse was built in 1883, near to the time as the two-story house built by Louis and Elizabeth Manning. The two homes share architectural elements of tall windows, a porch (large in the Foster case, many in the case of the Manning house), and tall, thin, double-hung windows. The Philip Foster Farm also has a lilac (reportedly the first lilac in Oregon) that was brought around Cape Horn by ship and planted by Foster's wife, which echoes the planting of the Pig Nut Hickory and Black Walnut trees in front of the Manning House. The Foster Farm has a woodshed and a chicken house, as does the Manning-Kamna Farm.

Daniel Albright Farm Group, Mollala, Oregon (Listed in NHRP 10/30/79):

This group also sits on a donation land claim, and consists of a group of buildings built between 1857 and 1904. A Greek Revival farmhouse (1865, remodeled 1904), granary barn (1871), chicken coop, and smoke house show examples of hand-hewn mortise and tenon frame construction. Like the Manning-Kamna Farm, this grouping of buildings provides insight into farming life of the time.

Although the Manning-Kamna Farm shares some characteristics with the Imbrie Farm, Philip Foster Farm, and Daniel Albright Farm, the Manning-Kamna Farm also demonstrates the changing and dynamic nature of farming and the farm family lifestyle during the late nineteenth and twentieth centuries. Nineteenth century farms had to adapt to evolving technological innovations and increased use and dependence on mechanization, both agriculturally and domestically, in the twentieth century to remain economically viable. This adoption of new ways of farming and living is seen through the buildings altered on the Manning-Kamna Farm, including additions to the farmhouse and barn, and the construction of new buildings, such as the garage, that show how an increased use of and reliance on new technologies physically translated to new ways of organizing and using space on the farm. Because of this, the Manning-Kamna Farm exhibits many resources that convey a better sense of the changing nature of agricultural production and farm family life during the late nineteenth and twentieth centuries that are not present at the Imbrie Farm, Philip Foster Farm, and Daniel Albright Farm.

CONCLUSION

The Manning-Kamna Farm is nominated to the National Register of Historic Places under Criterion A for its association with the evolution and development of agriculture in Washington County, and also under Criterion C, for the collective architectural significance of the ten component buildings on the site. The use and function of the buildings ties together a narrative of history that connects nearly 125 years of agriculture in Washington County. As is common among late nineteenth and twentieth century farms that possess intact resources, the Manning-Kamna Farm exhibits older buildings with updated features, and also retains the addition of newer resources that helped sustain the farming operation and family. As is apparent from the intact resources, the Manning-Kamna Farm clearly adapted to the changing patterns in the farming industry, such as the mechanization of farm machinery and the movement away from diversified farming practices. The farm also embraced new domestic technologies during the twentieth century, and thereby remodeled existing, nineteenth century domestic space to fit the needs of the more modern, twentieth century home. For both its association with the development of agriculture in Washington County, and the collective architectural significance of the property's historic buildings, the Manning-Kamna Farm is eligible for listing under Criterion A and C.

United States Department of the Interior
National Park Service

National Register of Historic Places Continuation Sheet

Section number 9 Page 1

BIBLIOGRAPHY

- Agriculture of the United States*, US Bureau of the Census, 8th Census, 1860, Vol. 2.
- Bourke, Paul and Donald DeBats. *Washington County: Politics and Community in Antebellum America*. Baltimore: The Johns Hopkins University Press, 1992.
- Byrd, Dean H. Stanley R. Clarke and Janice M. Healy. *Oregon Burial Site Guide*. Portland; Binford & Mort, 2001.
- Carey, Charles H. *General History of Oregon: A Definitive Record of the Oregon Country Complete in One Volume*. Portland: Binford & Mort, 1971.
- "Carlos Wilcox." Reference Card, Oregon State Historical Society, Portland, Oregon.
- Davies, John. *Douglas of the Forest, the North American Journals of David Douglas*. Seattle: University of Washington Press, 1980.
- Eells, Myron. "The Towns of Washington County." Student Journal, Pacific University, February 4, 1859.
- Endersby, Elrick, Alexander Greenwood, and David Larkin. *Barn, Preservation and Adaptation: The Evolution of a Vernacular Icon*. New York: Universe Publishing, 2003.
- Fitzgerald, Barbara. "Waggener, J.S. and Melinda, Farmstead" National Register of Historic Places nomination, 2002.
- Halstead, David. "Tree Care and Preservation: Residence: Black Walnut and Pignut Hickory Trees." Letter to Wayne Reed and Petrina Pometto, Tualatin, Oregon, June 24, 2005.
- Hillsboro Argus* (Hillsboro, Or.). "Obituary: Anna A. Kamna." Thursday, April 2, 1970.
- Indirect Index to Deeds: Washington County*, p. 141.
- _____. "Anniversary Noted." May 4, 1964, p. 12.
- _____. "Obituary: Arline Kamna." February 19, 1968.
- _____. "Imperial Feed & Grain Company Provides Important Contribution to Area's Industry, Agriculture." March 16, 1950.
- _____. "Imperial Feed Co. Purchase Revealed." October 26, 1959.

United States Department of the Interior
National Park Service

National Register of Historic Places Continuation Sheet

Section number 9 Page 2

_____. "Splendid Citizen Dies Near Hillsboro." November 24, 1910.

_____. "Pioneer Taken Monday After A Long Illness." April 10, 1930.

_____. February 26, 1859.

_____. November 15, 1923, p. 3.

_____. October 27, 1904.

Hillsboro Independent. "Obituary: Elizabeth Manning." April 14, 1916.

MacColl, E. Kimbark. *Merchants, Money and Power: The Portland Establishment 1843-1913*. Portland; Georgian Press, 1988.

_____. *The Shaping of a City: Business and Politics in Portland, Oregon 1885 to 1915*. Portland: The Georgian Press Company, 1976.

McArthur, Lewis A. *Oregon Geographic Names*. Portland: Oregon Historical Society, 1952.

Noble, Allen G. and Richard K. Cleek. *The Old Barn Book: A Field Guide to North American Barns and Other Farm Structures*. New Brunswick, NJ: Rutgers University Press, 1995.

Norman, James B. *Oregon's Architectural Heritage*. Salem: The Solo Press, 1986.

Ohio Department of Natural Resources. *Ohio's Trees*. www.dnr.state.oh.us/forestry/Education/ohiotrees, 2004.

Portland Democrat. May 6, 1858.

Robbins, William G. *Landscapes of Promise: The Oregon Story, 1800-1940*. Seattle: University of Washington Press, 1997.

Schoth, H.A. and G.R. Hyslop. "Common Vetch." *Station Bulletin 213*. Agriculture Experiment Station, Corvallis, Oregon, June 1925.

Speulda, Lou Ann Speulda. "Oregon's Agricultural Development: A Historic Context, 1811-1940." Salem: State Historic Preservation Office, 1989.

Vaughan, Thomas ed. and Virginia Guest Ferriday, assoc. ed. *Space, Style and Structure, Building in Northwest America. Vol.2*. Portland: Oregon Historical Society, 1974. Philip Dole, "Pioneer Days:

Manning-Kamna Farm
Name of Property

Washington Co., OR
County and State

NPS Form 10-900-a

OMB Approval No. 1024-0018

United States Department of the Interior
National Park Service

National Register of Historic Places Continuation Sheet

Section number 9 Page 3

Buildings and Gardens: Farmhouses and Barns of the Willamette Valley," pp. 79-140. Philip Dole,
"Railroad Era: Buildings and Gardens: Farmhouses and Barns of the Willamette Valley," pp. 209-260.

Washington Independent. "Prosperous." January 8, 1875.

_____. July 1, 1875.

Wilcox, Arthur. "*Wilcox Family Records*." 2000, Judy Goldman Collection, Washington Historical Society,
Hillsboro.

Wilcox, Hon. W.L. *History of Central Oregon*, Spokane: Western Historical Publishing Company, 1905, p. 614.

Manning-Kamna Farm
Name of Property

Washington Co., OR
County and State

10. Geographical Data

Acreage of Property 2.22 acre

UTM References

(Place additional UTM references on a continuation sheet)

1 10 501702 5043913
Zone Easting Northing

3 _____
Zone Easting Northing

2 _____

4 _____

Verbal Boundary Description

(Describe the boundaries of the property on a continuation sheet)

Boundary Justification

(Explain why the boundaries were selected on a continuation sheet)

11. Form Prepared By

name/title Georganne Sahaida

organization Design Studio date March 2005; rev. July 2007

street & number PMB 353, 25 N.W. 23rd Place, Suite 6 telephone 503-525-4960

city or town Portland state Oregon zip code 97210

Additional Documentation

Submit the following items with the completed form:

Continuation sheets

Maps: A USGS map (7.5 or 15 minute series) indicating the property's location.

A sketch map for historic districts and properties having large acreage or numerous resources.

Photographs: Representative black and white photographs of the property.

Additional items (check with the SHPO or FPO for any additional items)

Property Owner

name Wayne Reed and Petrina Pometto

street & number 29375 NW Evergreen Road telephone 503-846-1185

city or town Hillsboro state Oregon zip code 97124

Paperwork Reduction Act Statement: This information is being collected for applications to the National Register of Historic Places to nominate properties for listing or determine eligibility for listing, to list properties, and to amend existing listings. Response to this request is required to obtain a benefit in accordance with the National Historic Preservation Act, as amended (16 U.S.C.460 et seq.).

Estimated Burden Statement: Public reporting burden for this form is estimated to average 18.1 hours per response including time for reviewing instructions, gathering and maintaining data, and completing and reviewing the form. Direct comments regarding this burden estimate or any aspect of this form to the Chief, Administrative Services Division, National Park Service, PO Box 37127, Washington, DC 20013-7127; and the Office of Management and Budget, Paperwork Reductions Project (1024-0018), Washington, DC 20503.

United States Department of the Interior
National Park Service

National Register of Historic Places Continuation Sheet

Section number 10 Page 1

VERBAL BOUNDARY DESCRIPTION

General Description:

The southwest corner of the property begins at a point roughly at the intersection of NW Evergreen Road and NE Jackson School Road in Washington County, Oregon, running 304.30 feet north to the northwest point of the property. From here, the property line runs east 319.00 feet to the northeast point, and then south 304.3 feet to the southeast point of the property. From the southeast point, the property line runs 319.00 feet west back to the point of origin at the southwest corner of the property.

Legal Description:

Parcel I:

Beginning at a point on the North line of the J.S. Griffin Donation Land Claim No. 56, said point of beginning being 57.27 feet South 89°18' East from the Northwest corner of said Claim in Section 19, Township 1 North, Range 2 West, Willamette Meridian, in the County of Washington and State of Oregon; thence South 89°18' East in the center of County Road No. A-36 (Evergreen Road) 209.00 feet to a point; thence North 0°42' East 304.30 feet to a point; thence North 89°18' West 209.00 feet to a point; thence South 0°42' West 304.30 feet to the point of the beginning.

Parcel II:

Beginning at a point on the North line of the J.S. Griffin Donation Land Claim No. 56, said point of beginning being 57.27 feet South 89°18' East, from the Northwest corner of said claim in Section 19, Township 1 North, Range 2 West, Willamette Meridian, in the County of Washington and State of Oregon, said point being the Southwest corner of that tract purchased by Contract of Sale, by Stanley A. Corliss, *et. ux*, as recorded June 1973, in Book 931, Page 104, Washington County Deed Records; thence North 0°42' East along the Westerly boundary of said Corliss Tract, a distance of 304.30 feet to the Northwest corner of said tract; thence North 89°18' West, a distance of 110 feet to a point; thence South 0°42' West 304.30 feet in the center of County Road A-36; thence South 89°18' East, a distance of 110.0 feet to the point of beginning.

Assessor's Information:

Tax Parcel Number: R658924

Tax Lot Number: 1N2190000301

Manning-Kamna Farm
Name of Property

Washington Co., OR
County and State

NPS Form 10-900-a

OMB Approval No. 1024-0018

**United States Department of the Interior
National Park Service**

National Register of Historic Places Continuation Sheet

Section number 10 Page 2

BOUNDARY JUSTIFICATION

The boundaries make up the 2.22 acres that includes the farmhouse and outbuildings that have historically been part of the Manning-Kamna Farm during the period of significance and that maintain historic integrity.

United States Department of the Interior
National Park Service

National Register of Historic Places Continuation Sheet

Section number Photographs Page 1

PHOTOGRAPHS

Address: Manning-Kamna Farm
29375 NW Evergreen Road
Hillsboro, Washington County, Oregon

Photographer: Georganne Sahaida, nomination preparer, Design Studio, PMB 353, 25 N.W.
23rd Place, Suite 6, Portland, OR 97210

Date: April 2005 (staff visit by Oregon SHPO staff in 2006 confirm property appears the same as it did when photographs were taken)

Location of Negatives: Film, negatives held by Georganne Sahaida, nomination preparer

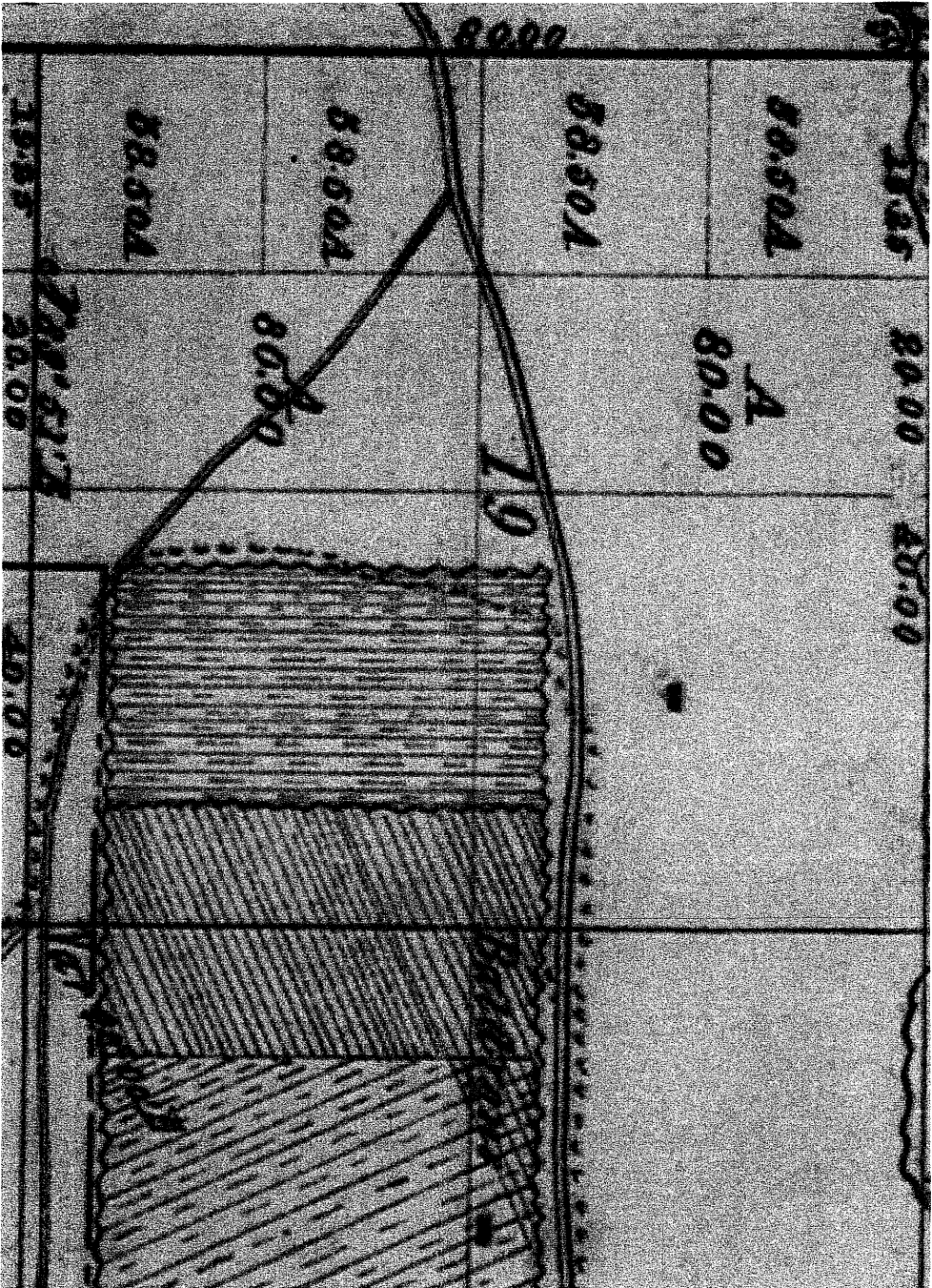
- 1 of 24: Exterior View: Farmhouse, west elevation, looking northeast
- 2 of 24: Exterior View: Farmhouse, south and west elevation, looking east
- 3 of 24: Exterior View: Farmhouse, south and west elevations, with canning shed to right, looking north
- 4 of 24: Exterior View: Farmhouse, west elevation, and chop house, north elevation, looking northeast
- 5 of 24: Exterior View: Farmhouse, west porch, looking east
- 6 of 24: Interior View: Farmhouse, Parson's/Fireplace room with view of fireplace
- 7 of 24: Interior View: Farmhouse, detail of Parson's/Fireplace room fireplace
- 8 of 24: Exterior View: Barn, east facade, and sheep enclosure, looking west
- 9 of 24: Exterior View: Barn, east elevation, looking west
- 10 of 24: Exterior View: Barn, east elevation, looking south toward Evergreen Road, looking southwest
- 11 of 24: Exterior View: Barn, east elevation, looking west
- 12 of 24: Interior View: Barn, with equipment
- 13 of 24: Interior View: Barn, with equipment
- 14 of 24: Interior View: Barn, detail of seed chutes
- 15 of 24: Exterior View: Pumphouse and Barn, looking southwest, looking southwest

**United States Department of the Interior
National Park Service**

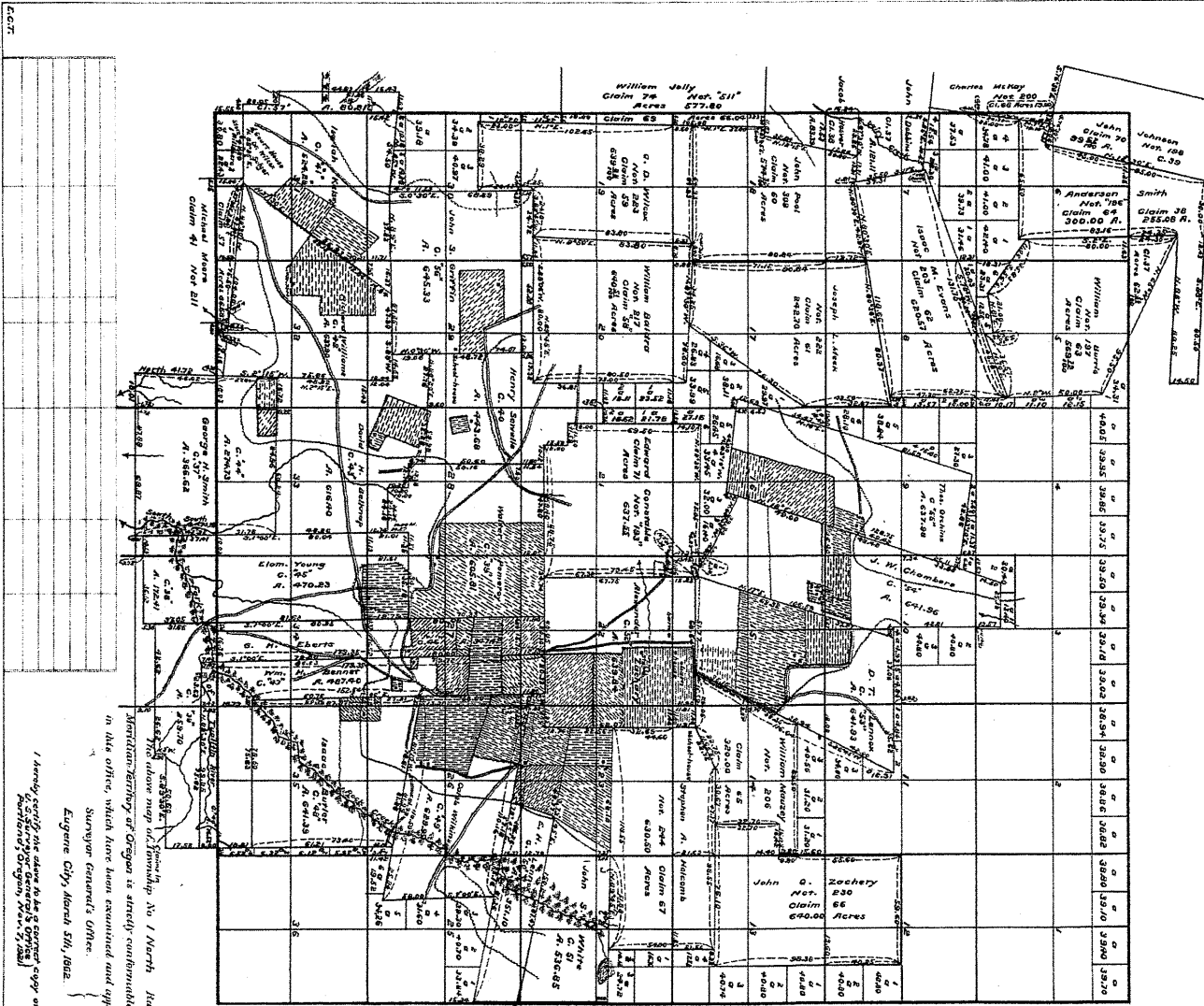
National Register of Historic Places Continuation Sheet

Section number Photographs Page 2

- 16 of 24: Exterior View: Pumphouse, north elevation, looking north
- 17 of 24: Exterior View: west elevation of pumphouse in foreground, with chophouse behind, and smokehouse in background, looking east
- 18 of 24: Exterior View: Garage, west elevation, with barn in background, looking west
- 19 of 24: Exterior View: South elevation of the chicken house (far left) and potato shed (middle), with the smokehouse in foreground, looking north
- 20 of 24: Exterior View: Smokehouse, west elevation, looking northeast, looking east
- 21 of 24: Exterior View: Privy, west elevation, with canning shed in foreground, looking east
- 22 of 24: Interior View: Privy
- 23 of 24: Exterior View: Canning shed (far left), farmhouse (middle), with chophouse in foreground, north elevation, looking south
- 24 of 24: Exterior View: Shagbark Hickory (*Carya ovata*) tree next to garage, looking west



Township No. 1 North Range No. 2 West of the Willamette Meridian, Oregon.



Contract No. & Joseph Kershner, Depo. Survey	Name of Settler	No. of Claim	Acres	Amount of Survey
340	Kerry Sewell	40	464.88	3 21 47
240	Isaac Kelso	41	534.58	2 41 58
240	Richard Williams	42	637.00	2 77 16
444	David H. Bullock	43	616.40	2 66 31
444	George W. Smith	44	274.73	1 23 02
191	Elam Young	45	170.23	2 28 57
185	G. N. Edwards	46	367.92	3 11 36
180	Wm. H. Bennett	47	467.90	3 07 36
180	Isaac Butler	48	671.28	2 38 30
180	Carole Wiggins	49	523.35	3 17 35
180	E. H. Linnick	50	535.62	3 17 10
180	John T. Zoehly	51	629.94	3 46 57
187	J. T. Lamoreux	52	664.93	3 58 16
204	J. W. Chambers	53	664.96	3 76 05
204	Thos. Dutchman	54	637.99	4 18 06
204	John S. Griffin	56	606.53	3 23 17
				52 46 05
Contract No. 3, Jarrod Myrshell, Depo. Sur.				
153	John Dobbins	37	121.11	1 10 35
149	Jacob Hoover	38	633.91	1 10 36
149	Water Panney	39	605.81	1 13 11
				6 34 48
Township No. 1 South R. No. 2 W.				
Contract No. 4, Joseph Lashburn Depo. Survey				
441	Geo. H. Smith	37	368.02	1 74 35
191	Elam Young	38	172.91	1 09 35
185	Geo. H. Edwards	39	252.70	2 75 30
184	Wm. H. Bennett	40	76.22	0 24 05
				6 52 11
Township No. 1 North No. 3 W.				
Contract No. 4, Joseph Lashburn Depo. Sur.				
210	Garson Kelsey	37		1 29 37

William Burch 61
 Myronder Smith 62
 J. M. Evans 63
 John Johnson 64
 John Johnson 65
 William Burch 66
 Myronder Smith 67
 Geo. W. Smith 68
 Geo. W. Smith 69
 Edward Conzable 70
 Myronder Smith 71
 Myronder Smith 72

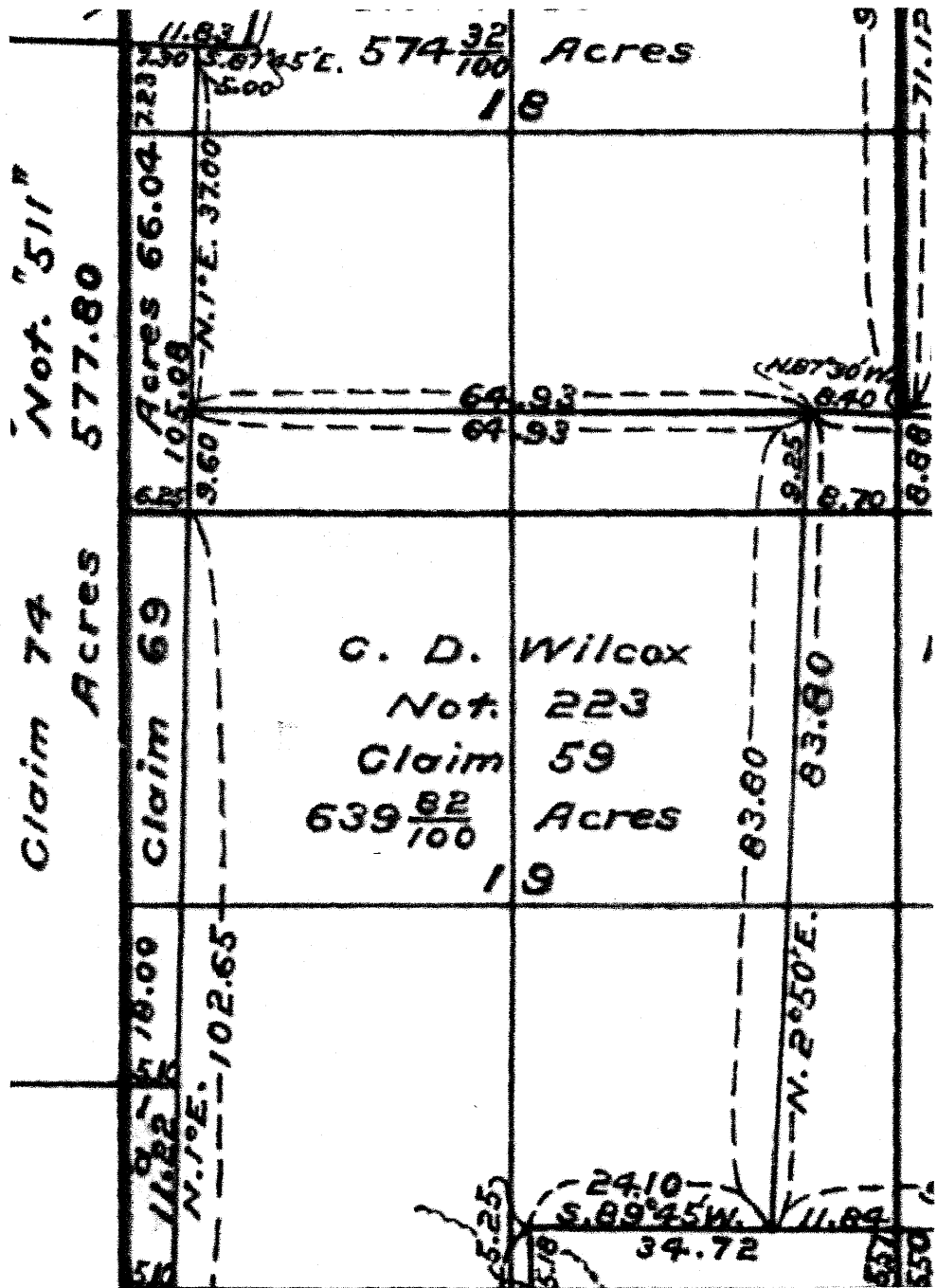
Scale 40 Chains to an inch
 Shows Magnetic Declination

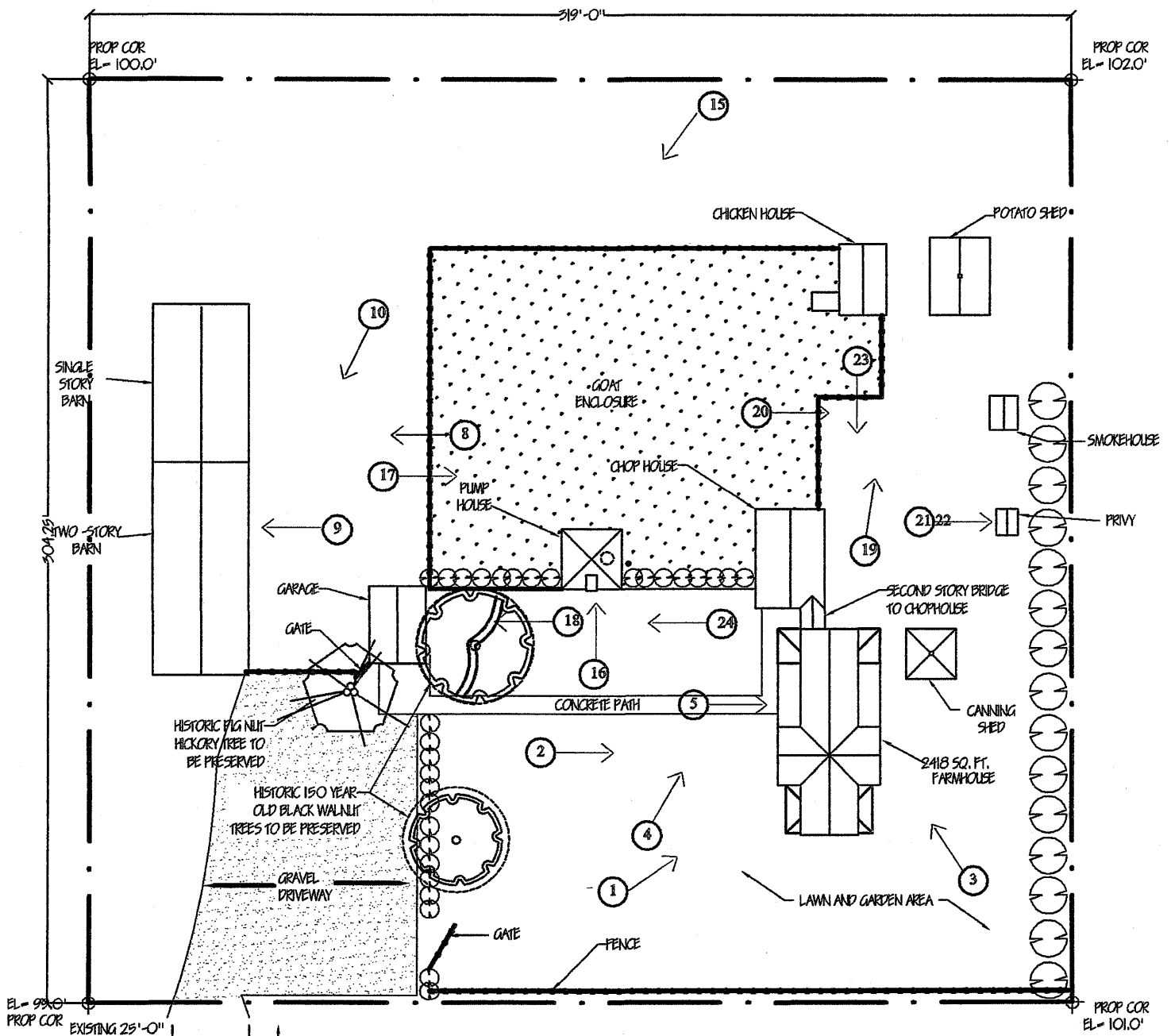
Meridian Territory of Oregon is already conformable to the field notes of the survey shown on file in this office, which have been examined and approved.
 Surveyor General's Office.
 Eugene City, March 5th, 1862.

(Signed) B. J. Rogers
 Surveyor General of Oregon.

I hereby certify the above to be a correct copy of the original plat file in this office.
 Surveyor General of Oregon.

1862





DEDICATED TRAFFIC LIGHT AT DRIVEWAY INTERSECTION TO NW EVERGREEN RD. AND JACKSON SCHOOL RD (S.B.)

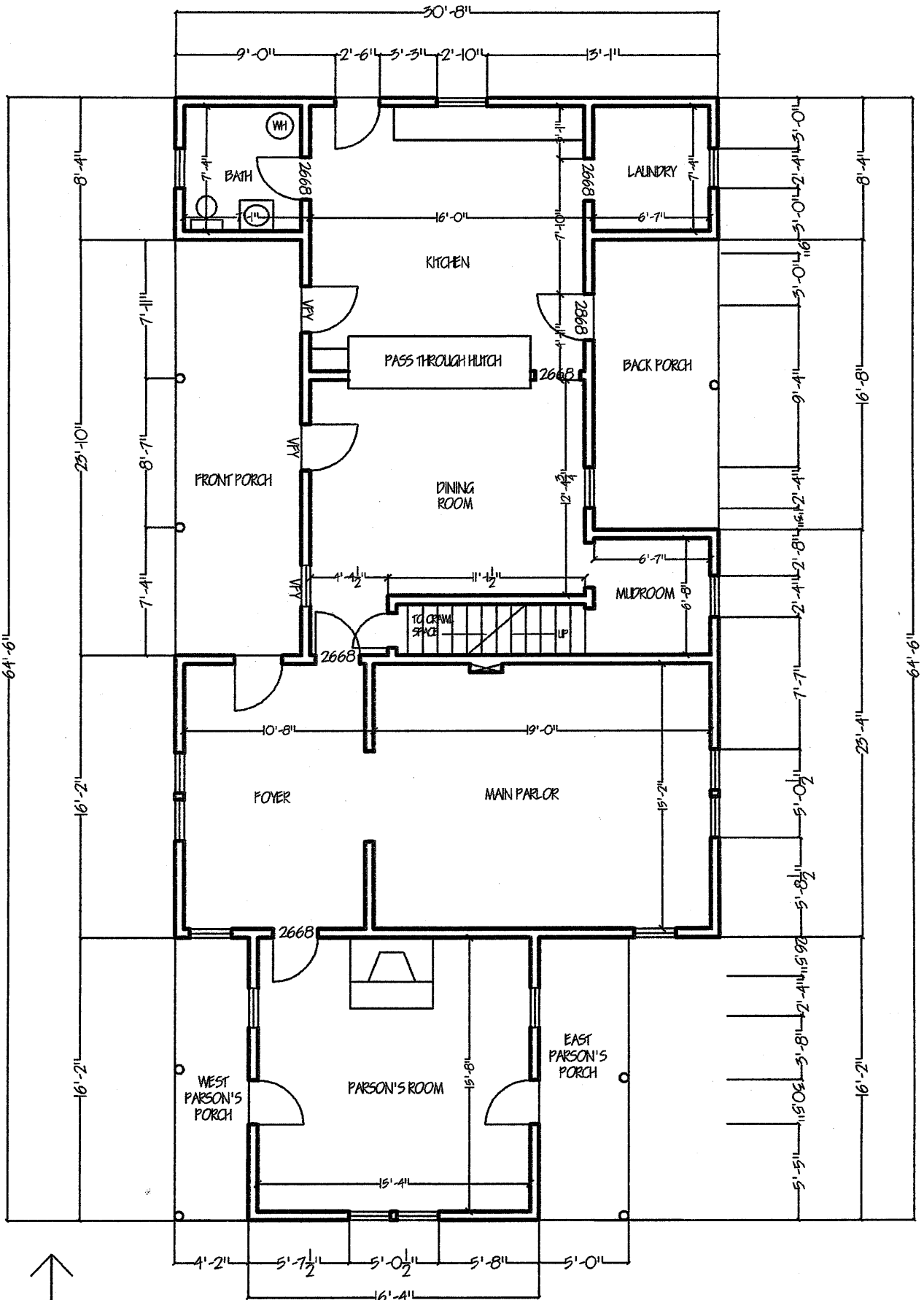
KEY

- — — — — PROPERTY LINE
- — — — — FENCE LINE
- [Gravel Pattern] GRAVEL
- [Dotted Pattern] ENCLOSED PASTURE
- [Hickory Symbol] HISTORIC PIG NUT HICKORY (*Carya alabra*)
- [Walnut Symbol] HISTORIC BLACK WALNUT (*Juglans nigra*)
- [Arrow in Circle #] PHOTO REFERENCE
- [Large Hedge Symbol] LARGE HEDGE
- [Small Hedge Symbol] SMALL HEDGE



MANNING-KAMNA FARM: SITE PLAN

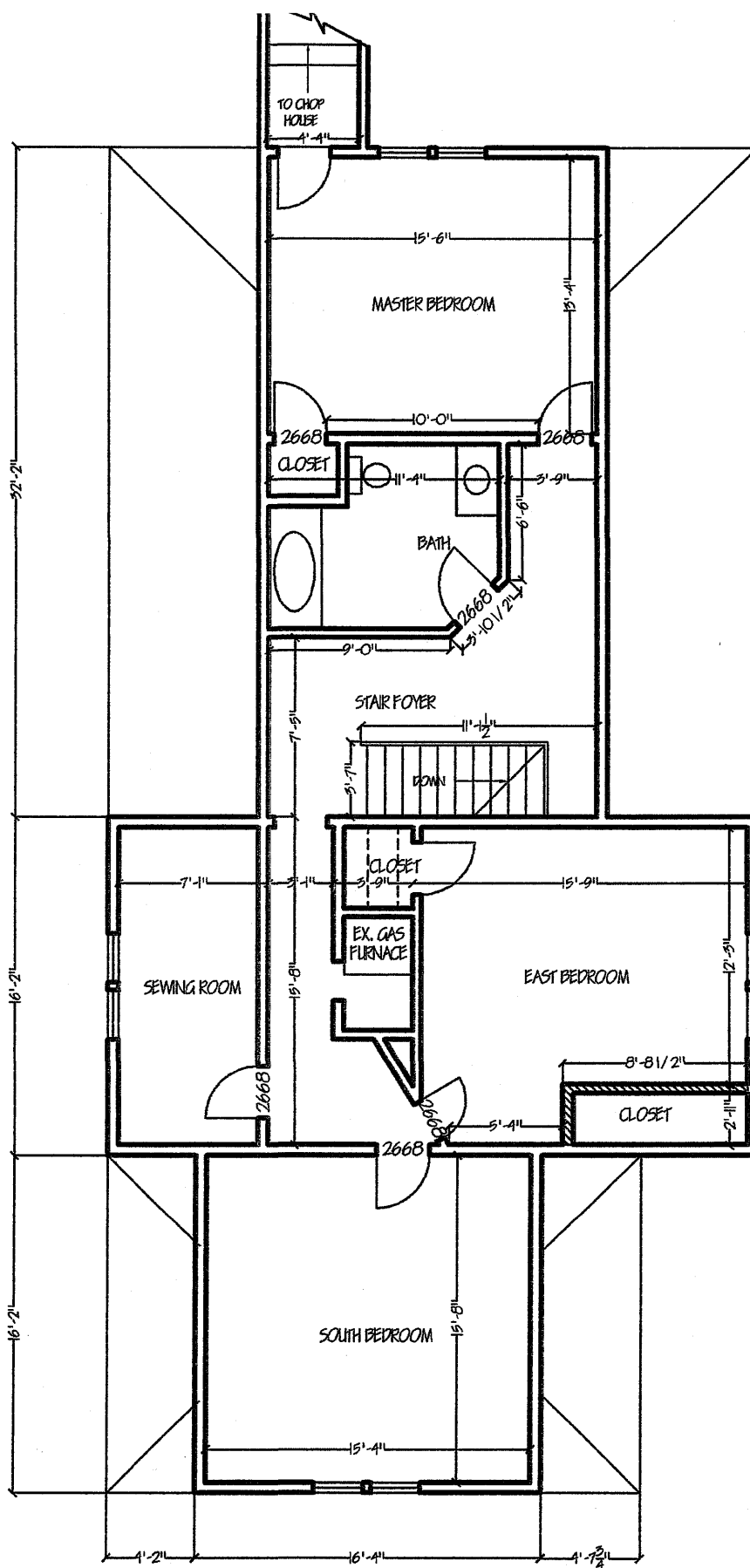
1"=50'-0"



MANNING-KAMNA FARM
 FIRST FLOOR PLAN

SCALE: 1/8" = 1'-0"





MANNING-KAMNA FARM
SECOND FLOOR PLAN

SCALE: 1/8" = 1'-0"



Manning —

KAMNATA FARM

WASHINGTON COUNTY, OR

G. SAHAI DA

APRIL 9, 2005

PO Box 10526, PORTLAND OR 97296

FARMHOUSE: WEST ELEVATION

PHOTO # 1 OF 24



Manning —

KAMNA FARM

WASHINGTON COUNTY, OREGON

G. SAHAIDA

APRIL 9, 2005

PO. Box 10526, PORTLAND, OR 97296

FARMHOUSE: WEST ELEVATION

PHOTO # 2 OF 24



Manning -

KAMNA FARM

WASHINGTON Co., OR

G. SAHAIDA

APRIL 9, 2005

PO BOX 10526, PORTLAND, OR 97296

FARMHOUSE; SOUTH & WEST ELEV.

PHOTO # 3 OF 24



Manning -

KANNA FARM

WASHINGTON COUNTY, OR

G. SAHAIDA

APRIL 9, 2005

PO BOX 10526, PORTLAND, OR 97296

FARMHOUSE, WEST ELEVATION

CHOPHOUSE, NORTH ELEVATION

PHOTO # 4 OF 24



Manning -
KANNA FARM
WASHINGTON COUNTY, OR
G. SAHAIDA
PO BOX 10526, PORTLAND, OR 97296
APRIL 9, 2005
FARMHOUSE: WEST PORCH
PHOTO #5 OF 24



Manning -

KAMNIA FARM

WASHINGTON COUNTY, OR

G. SAHAIDA

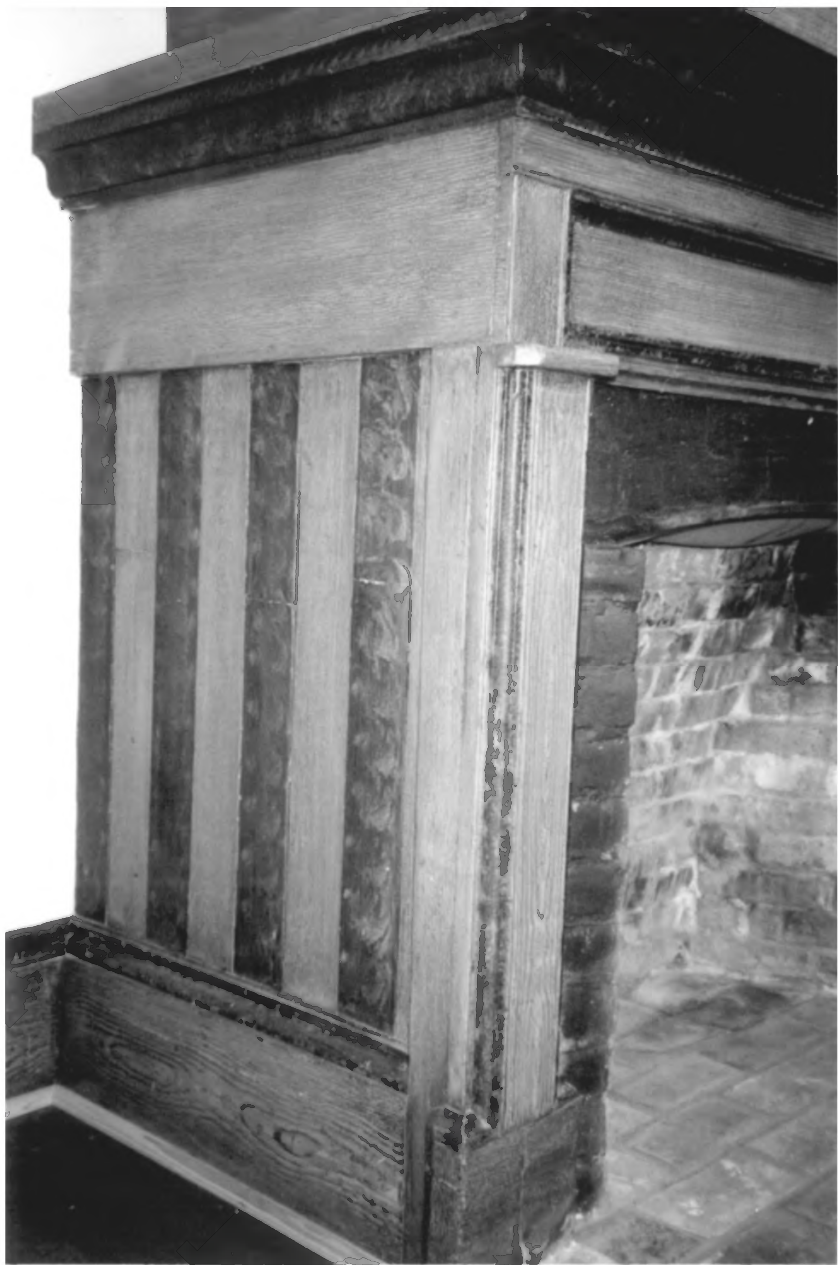
PO Box 10526, PORTLAND, OR 97296

APRIL 9, 2005

FARMHOUSE: INTERIOR: PARSON'S ROOM

FIREPLACE

PHOTO # 6 OF 24



Manning -

KANNA FARM

WASHINGTON COUNTY, OR

G. SAHADA

APRIL 9, 2005

PO Box 10526, PORTLAND OR
97296

FARINHOUSE, INTERIOR

PARSON'S ROOM FIREPLACE

DETAIL

PHOTO # 7 OF 24



Manning -
KARINA FARM
WASHINGTON COUNTY, OR
G. SAHAIDA

PO Box 10526, PORTLAND, OR 97296

APRIL 9, 2005

BARN & SHEEP ENCLOSURE

EAST ELEVATION

PHOTO #8 OF 24



Manning -
KAMNA FARM
WASHINGTON COUNTY, OR
G. SAHADA

PO Box 10526, PORTLAND, OR 97296

APRIL 9, 2005

BARN: EAST ELEVATION

PHOTO # 9 OF 24



Manning -
KAMNA FARM

WASHINGTON COUNTY, OR

G. SAHAI DA

PO Box 10526, PORTLAND, OR 97296

APRIL 9, 2005

BARN: EAST ELEVATION

PHOTO # 10 OF 24



Manning -

KAMNA FARM

WASHINGTON COUNTY, OR

G. SAHAIDA

APRIL 9, 2005

PO BOX 10526, PORTLAND, OR 97296

BARN: EAST ELEVATION

PHOTO 11 OF 24



Manning -

KAMNA FARM

WASHINGTON COUNTY, OR

G. SAHADA

APRIL 9, 2005

PO BOX 10526, PORTLAND, OR 97296

BARN: INTERIOR

EQUIPMENT

PHOTO 12 OF 24



Manning -

KANNA FARM

WASHINGTON COUNTY, OR

G SANDA

APRIL 9, 2005

PO BOX 10526, PORTLAND, OR 97296

BAEN: INTERIOR: EQUIPMENT

PHOTO 13 OF 24

508

1512

A 500
A 502
A 503
A 504
A 506
A-507
A 510
A 508
A 511
A 512
A 515
A 514
A 513
A-515
A 516
A 520
A 521
A 522
A-520

BRASS

Manning -
KAMNA FARM
WASHINGTON COUNTY, OR
G. SAHAIDA
PO Box 10526, PORTLAND, OR 97296

APRIL 9, 2005

BARN: INTERIOR

DETAIL: SEED CHUTES

PHOTO #14 OF 24



Manning -

KAMNA FARM

WASHINGTON COUNTY, OR

G. SAHAIDA

PO Box 10526, PORTLAND, OR

APRIL 9, 2005

97296

PUMPHOUSE & BARN

LOOKING SOUTHWEST

PHOTO 15 OF 24



Manning -
KAMNIA FARM
WASHINGTON COUNTY, OR
G. SAAVEDRA
APRIL 9, 2005
PO Box 10526, PORTLAND, OR 97296
PUMPHOUSE
NORTH ELEVATION
PHOTO # 16 OF 24



Manning -
KANNA FARM
WASHINGTON COUNTY, OR

G. SAHALDA

APRIL 9, 2005

PO BOX 10526, PORTLAND, OR 97296

PUMPHOUSE; WEST ELEVATION

CHUPHOUSE BEHIND

SMOKEHOUSE IN BACKGROUND

PHOTO # 17 OF 24



Manning -

KAMNA FARM

WASHINGTON COUNTY, OR

G. SANDA

APRIL 9, 2005

PO Box 10526

PORTLAND, OR 97296

GARAGE! WEST ELEVATION

PHOTO # 18 OF 24



Manning -

KAMNA FARM

WASHINGTON COUNTY, OR

G SAHADA

APRIL 9, 2005

PO Box 10526

PORTLAND, OR 97296

CHICKEN HOUSE, POTATO SHED

SOUTH ELEVATION

SMOKEHOUSE IN FOREGROUND

PHOTO #19 OF 24



Manning -

KAMNA FARM

WASHINGTON COUNTY, OR

G. SAHADA

APRIL 9, 2005

PO Box 10526

PORTLAND OR 97296

~~SMOKE HOUSE~~

WEST ELEVATION

PHOTO # 20 OF 24



Manning -

KAMNAT FARM

WASHINGTON COUNTY, OR

G. SAHADA - APRIL 9, 2005

PO BOX 10526

PORTLAND, OR 97296

PRIVY - WEST ELEVATION

CANNING SHED IN FOREGROUND

PHOTO #21 OF 24



Manning -

KANNA FARM

WASHINGTON COUNTY, OR

G. SAHADA

PO BOX 10526

PORTLAND, OR 97296

APRIL 9, 2005

FRIVY

INTERIOR

PHOTO # 22 OF 24



Manning -
KANNA FARM
WASHINGTON COUNTY, OR
G. SAHAIDA
PO BOX 10526

PORTLAND, OR 97296

APRIL 9, 2005

CANNING SHED, FARMHOUSE, &
CHOP HOUSE

NORTH ELEVATION

PHOTO # 23 OF 24



Manning -
KANNA FARM
WASHINGTON COUNTY, OR
G. SAHAIDA
PO Box 10526
PORTLAND, OR 97296
APRIL 9, 2005

SHAGBARK Hickory
"Carya Ovata"

PHOTO # 24 OF 24