

3472

United States Department of the Interior National Park Service

RECEIVED

JUN 27 1988

National Register of Historic Places Registration Form

NATIONAL REGISTER

This form is for use in nominating or requesting determinations of eligibility for individual properties or districts. See instructions in Guidelines for Completing National Register Forms (National Register Bulletin 16). Complete each item by marking "x" in the appropriate box or by entering the requested information. If an item does not apply to the property being documented, enter "N/A" for "not applicable." For functions, styles, materials, and areas of significance, enter only the categories and subcategories listed in the instructions. For additional space use continuation sheets (Form 10-900a). Type all entries.

1. Name of Property

historic name Kennedy, John D., Elementary School other names/site number N/A

2. Location

street & number 5736 NE 33rd Street city, town Portland state Oregon code OR county Multnomah code 051 zip code 97211

3. Classification

Ownership of Property: private, public-local (checked), public-State, public-Federal. Category of Property: building(s) (checked), district, site, structure, object. Number of Resources within Property: Contributing 1, Noncontributing 1 buildings, 1 Total.

Name of related multiple property listing: N/A Number of contributing resources previously listed in the National Register: N/A

4. State/Federal Agency Certification

As the designated authority under the National Historic Preservation Act of 1966, as amended, I hereby certify that this request for determination of eligibility meets the documentation standards for registering properties in the National Register of Historic Places and meets the procedural and professional requirements set forth in 36 CFR Part 60. In my opinion, the property meets the National Register criteria. Signature of certifying official: Deputy State Historic Preservation Officer, Date: June 20, 1988.

In my opinion, the property meets the National Register criteria. Signature of commenting or other official: State or Federal agency and bureau: Date:

5. National Park Service Certification

I, hereby, certify that this property is: entered in the National Register (checked), determined eligible for the National Register (checked), determined not eligible for the National Register. Signature of the Keeper: Patrick Anders, Edson R. Beal, Date of Action: 10/13/88, 11.22.95.

6. Function or Use

Historic Functions (enter categories from instructions)

Education/grammar school

Current Functions (enter categories from instructions)

Vacant/not in use

7. Description

Architectural Classification

(enter categories from instructions)

Late 19th and 20th Century Revivals/
Italian Renaissance

Materials (enter categories from instructions)

foundation brick

walls stucco over clay tile

wood/weatherboard

roof metal/tin

other trim elements/glazed terra cotta

Describe present and historic physical appearance.

United States Department of the Interior
National Park Service

27

National Register of Historic Places
Continuation SheetSection number 7 Page 1

The John D. Kennedy Elementary School is oriented west on N.E. 33rd. Street. The school and school grounds occupy a square block in the Kennedy Addition to East Portland. Constructed of tile and brick and finished with stucco and terra cotta relief, the building is in the Italian Renaissance style. The main portion of the building was built in 1915, and designed by prominent Northwest architect F. A. Nar amore. The Mediterranean influence is expressed in the arcaded entry; the round headed window and door openings; the low pitched roof; an elaborately modillioned wooden cornice and corbelled frieze; and in the smooth stucco surfaces embellished with elaborate treatments of terra cotta belt courses and friezes in classical motifs of cherubs, grape vines and floretts. The building consists of well-defined rectilineal blocks asymmetrically grouped. The blocks of the facade elevation are symmetrically composed; the remaining elevations are balanced in composition. The building was designed to grow with the neighborhood, and the initial plan was designed to accommodate subsequent additions. Accordingly additional classrooms were added in 1917, 1918, and in 1924. A gymnasium was added in the mid 1920's. George Jones designed the 1924 addition. These additions are in detailed accordance with the architectural propriety. The building has considerable water damage on the interior due to a leaky roof, but is basically sound and the damage is repairable. Some of the windows have been boarded up to prevent vandalism. A free standing portable classroom was added in 1947 and is a non-contributing feature.

The building and school yard are located on a city block, described as block 11 and 14 of Kennedy's Addition to East Portland in Township 1 North, Range 1 East, section 13. The school is situated on N.E. 33rd. Street and faces west. The school block is bounded by N.E. Simpson Street on the north, N.E. 34th Street on the east, N.E. Jessup on the south. The site is 4.22 acres on a 460'x 400' block. The gross square footage of the building is 5,200 ft.

The facade elevation is enhanced by plantings of rhododendron, camellia, and azalea along the walls. Flowering cherry trees are planted on each side of the front lawn. The overstory consists of four maple trees along the street. A mature flowering cherry tree is the only feature in the enclosed grass covered courtyard. Behind the school is an asphalt covered playground and a grass covered playing field. Two large maple trees and two large cedar

United States Department of the Interior
National Park Service

National Register of Historic Places
Continuation Sheet

Section number 7 Page 2

trees shade the northwest corner of the schoolyard, and a single cedar tree enhances the north elevation.

When the school was first built N.E. 33rd. Avenue was "just an unpaved cow trail...the area was heavily wooded and houses were well scattered", (The Oregonian, February 4, 1965). The neighborhood grew up around Kennedy Elementary School. The school is in a middle class neighborhood composed of houses built chiefly in the 1920's and 1930's. The John D. Kennedy house is the exception and was built in 1888, and served as the headquarters for John D. Kennedy's farm. John D. Kennedy made part of his farm land available for the school building and the south wing of Kennedy occupies land formerly used for a barn and chicken house. The farm house is located on Simpson, directly across the street from Kennedy School.

The school is well sited, and situated so that a child walking to school on Jarrett Street could see the main doorway from 10 blocks away. The school was sited on a slight rise that gains elevation to the south. The architect incorporated the existing grade into the design, so the southern block of classrooms on the facade is higher, and the windows are higher off the ground than the block to the north.

The one story building is composed of well defined horizontally massed rectilinear blocks enclosing a central courtyard. The facade composition is balanced and the elevations of the individual blocks are symmetrical. The building consists of a variety of sizes and forms, which the different parts of a school may take. There are 23 classrooms, an auditorium, a cafeteria, a gymnasium, two offices, a library, and a boiler room with a 50' stuccoed brick chimney.

A continuous brick footing supports the structural clay tile construction. The surface is finished with stucco with the exception of the back gable ends which are shiplapped. A grid of 12"x12" concrete posts supports 8"x10" girders, and 2"x8" joists on 16" centers. The roof structure of the gymnasium and the auditorium is supported by large wooden trusses. The roof structure in the classroom wings is wood framed with 2"x12" joists, 16" on center and 2"x6" rafters, 16" on center. The records of the school district indicate that the building was designed "in a Naramore Finger Plan with single load corridors." (Kennedy School File, Portland Public Schools).

United States Department of the Interior
National Park ServiceNational Register of Historic Places
Continuation SheetSection number 7 Page 3

Mediterranean/Renaissance influence is expressed in the arcaded entry; the round headed window and door openings; the low pitched roofs; an elaborately modillioned wooden cornice and corbelled frieze; and in the smooth stucco surfaces embellished with elaborate treatments of terra cotta belt courses and friezes. Typical of Mediterranean inspired construction, the main attributes are composed in groups of threes: Three arches access the three recessed entrance doors which are flanked by three round headed windows and highlighted by three square casement windows that light the vestibule. Three banks of multipane casement windows on each of the facade classroom wings light classrooms in these wings.

The picturesque composition of the main elevation is elegantly rendered and finely detailed. The central rectangular volume houses the entry and foyer and the principals office. This is the most ornate block and is embellished with terra cotta belt courses, friezes and impostes in classical motifs: Boy and girl cherubs and floretts accent the arches; an open book and a flaming lantern of knowledge embellish the impostes; cartouch friezes with winged cherubs and fruit laden cornicopias are set above the round-headed fenestrations. Both vertical and horizontal belt courses in the grapevine motif relief this elevation. This block exhibits a low pitched complexly hipped tin clad roof with cresting on the ridges, and a projecting eave with a corbelled and modillioned cornice.

The roof plan shows the complex intersections of both hipped and gabled volumes. The roofs are low pitched and clad with raised seam tin roofing. The roof lines of the other elevations are well composed with fully rendered cornices with terra cotta friezes in a grapevine motif. Balustraded sections in an otherwise solid, stuccoed parapet correspond to each series of multipane casement bays on the classroom elevations. Round headed windows light the auditorium.

The school was designed to grow with the neighborhood, and the initial plan was designed to accomodate subsequent additions. Accoringly additional classrooms were added in 1917, 1918 and and 1924. The central courtyard was planned from the beginning and was an integral part of architect F.A. Naramore's new concept of school design. The courtyard was not enclosed until the 1924 addition. Each of the additions are in detailed accordance with the original structure. For example the terra cotta specifications for the 1924 addition states "...All architectural terra cotta shall be made in strict accordance with detail drawings, and to match present work, of carefully selected

United States Department of the Interior
National Park ServiceNational Register of Historic Places
Continuation SheetSection number 7 Page 4

clay properly burned, and shall be in perfect condition after being placed on the wall...All pieces shall be true in shape, all mouldings sharp and regular, and all work shall have full depth of relief." (Portland Buildings Bureau, microfilm records.)

The core portion of the school was built in 1915, and was 'T' in plan. The current facade elevation is the same with the exception of the westward jutting 'ells'. There were eight classrooms; six on the facade elevation and two flanking the boiler room at the rear of the building. The stem of the 'T' was made up of a playshed, bathrooms, an interior corridor and an exterior corridor.

The records are inconsistent and unspecific for the alterations except for the 1924 additon. The four main episodes of construction were in 1915, 1917, 1918, 1924, and ca.1925. (Portland Buildings Bureau, card file and microfilm records). The following senario of these additions is probably accurate, but must be qualified due to the unspecific nature of the records. In 1917 four more classrooms were added with the additions of the two jutting 'ells' on the north and south sides of the facade. In 1918 five more classrooms were added with the south wing. In 1924 a auditorium and six additional classrooms were constructed on the north and east elevations. A stage and motion picture booth were incorporated into the auditorium. The new classrooms included a home economics lab complete with stoves, pantry, sinks, counters and sewing cabinets. This addition was constructed in an 'ell' formation thus enclosing the central courtyard, which was part of the architects plan for this school. In the mid or late 1920's a small gymnasium was constructed on the south side of the stem of the 'T' configuration of the original structure. This addition subsumed the covered walkway which was part of the original structure. Several portable buildings were constructed and torn down when obsolete. A remaining portable from 1947 is in place and is a not-contrubuting structure.

Proceeding through the arcaded porch through the main doors, one enters the central foyer. Four large wood framed, cast bas relief panels are exhibited high on the vestibule wall, which are lit by the west facing windows above the entry complex. They are reproductions of the famous panels executed by Luca della Robbia for the "singing gallery" of the great cathedral in Florence. (Ore gonian, September 10, 1916.) John D. Kennedy donated these to the school when it was opened. A balustrade encloses the gallery

United States Department of the Interior
National Park Service

27

National Register of Historic Places
Continuation SheetSection number 7 Page 5

above the recessed entry. The doors, windows and moldings are of dark varnished wood in all the hallways. The moldings in the hallways include shoe mold, chair rail, and picture mold. The wall finishes are canvas wainscot, and plaster upper walls. Plaster cornices enhance the ceilings, which are clad with acoustical tile. Within the classrooms moldings and doors are painted.

The front hall runs the length of the building. The floorline is connected by two ramps which accomodate the finished grade of the site. There are three halls perpendicular to the main hall, and a back hall in the northeast section of the building.

The typical classroom features a window elevation, and a full width black board with a cork strip above it on the front and side walls. The back wall contains four cloak closets with rising pocket doors and coat hooks. The front of the doors is faced with black boards. There is one bank of book shelves on the back wall as well. The classrooms, main halls, the gymnasium, and the auditorium feature maple floors. The cafeteria and bathroom floors are set on poured concrete and finished with linoleum and ceramic tile.

Interior finishes have in part been altered over the years. In 1956 the lunchroom and the bathrooms were renovated.

8. Statement of Significance

Certifying official has considered the significance of this property in relation to other properties:

nationally statewide locally

27

Applicable National Register Criteria A B C D

Criteria Considerations (Exceptions) A B C D E F G

Areas of Significance (enter categories from instructions)
Architecture
Community Planning and Development

Period of Significance
1915-1925
1913-1930

Significant Dates
1915
1913

Cultural Affiliation
N/A

Significant Person

Architect/Builder
Floyd A. Naramore, Architect

State significance of property, and justify criteria, criteria considerations, and areas and periods of significance noted above.

John D. Kennedy Elementary School is located in Portland, Oregon, at 5736 NE 33rd Avenue. The property encompasses Block 11 and Block 14 of Kennedy's Addition to East Portland and is approximately four acres in area. The main entrance of the school faces west and is centered on the east-west axis of NE Jarrett Street.

Built in 1915 from plans provided by Portland school architect F. A. Naramore, the school initially was a formally-composed, linear configuration consisting of a 1 1/2-story central administrative core with ell and single-story classroom wings extending to the north and south. Constructed of brick and structural clay tile finished with stucco on principal exterior elevations, the school is detailed in the Italian Renaissance Revival style, which owed its inspiration to the late 19th Century work of proponents of the American cultural Renaissance, such as the Boston Public Library (1887-1898) of McKim, Mead and White.

Of all the characteristic elements of style displayed on the facade of the central block, the most specific allusion to the 15th Century Florentine architecture is the loggia, or recessed porch, wherein the spandrels of its arcade are decorated with bas relief medallions of terra cotta evoking the colonnade of Brunelleschi's celebrated Foundling Hospital (1421-1444). The medallions and panels, donated by John D. Kennedy, were hailed at the time of their installation in 1916 as the first important gift of art from a citizen to Portland public schools. The pieces were reported to have been produced in Boston by P. P. Caproni and Brother, and were described as reproductions of Luca della Robbia's decorations for the Cantoria, or Singing Gallery (1431-1438) of the Cathedral in Florence (1296-1436). (Andrea della Robbia, whose foundling children decorate the hospital, was the nephew of Luca della Robbia.)

The school was expanded by classroom additions to north and south wings ^{beginning} in 1917 and by longitudinal gymnasium and auditorium wings on the east in the 1920s. The east wings helped define a recreation courtyard which had been part of the architect's early concept.

See continuation sheet

9. Major Bibliographical References

See continuation sheet

Previous documentation on file (NPS):

- preliminary determination of individual listing (36 CFR 67) has been requested
- previously listed in the National Register
- previously determined eligible by the National Register
- designated a National Historic Landmark
- recorded by Historic American Buildings Survey # _____
- recorded by Historic American Engineering Record # _____

Primary location of additional data:

- State historic preservation office
- Other State agency
- Federal agency
- Local government
- University
- Other

Specify repository:

Portland Public Schools
PO Box 3107, Portland, OR 97208

10. Geographical Data

Acreage of property 4.22 acres Portland, Oregon-Washington 1:24000

UTM References

A

1	1	0
Zone		

5	2	8	9	1	6	1	0
Easting							

5	1	0	4	1	5	1	5	2	1	0
Northing										

C

B

Zone										

Easting										

Northing										

D

See continuation sheet

Verbal Boundary Description

The nominated area is located in SE¼ Section 13, Township 1N, Range 1E, Willamette Meridian, in Portland, Multnomah County, Oregon. It is legally described as Blocks 11 and 14 of Kennedy's Addition to East Portland at said location.

See continuation sheet

Boundary Justification

The nominated area encompasses the entire four-acre holding sold by real estate entrepreneur John D. Kennedy to the Portland School District in 1913 expressly for development of a public elementary school, which was completed from plans by School District architect F. A. Naramore and opened for use on the site in 1915. The property includes the school's historic playground and a so-called "portable," or small, detached classroom building of frame construction added behind the school in 1947. The latter is not counted as a contributing feature.

See continuation sheet

11. Form Prepared By

name/title Melissa Cole Darby
organization N/A date December 15, 1987
street & number 3327 NE Simpson Street telephone (503) 281-0204
city or town Portland state Oregon zip code 97211

United States Department of the Interior
National Park Service

SEP 15 1998

National Register of Historic Places
Continuation SheetSection number 8 Page 1

Kennedy School is locally significant under Criterion C in the context of Portland school architecture as an especially finely detailed design which was progressive in its containment of classrooms at grade level, its fireproof construction and protected play court. F. A. Naramore's work in this specialized area was well recognized in his day. Franklin High school (1914) was singled out for commendation in the category of school architecture by the Oregon Chapter of the American Institute of Architects in 1919. Floyd A. Naramore (1879-1970), a native of Warren, Illinois, was a 1902 graduate of the Massachusetts Institute of Technology (M.I.T.). He was the architect of the Portland School District from 1912 to 1919 and left a legacy of high quality school buildings in the city, of which Kennedy Elementary is exemplary for its progressive plan and unusual detail incorporating reproductions of master works of art. Naramore moved on with his specialty to become architect for Seattle Public Schools (1919-1932). In 1943 he started his own firm, which was to evolve as Naramore, Bain, Brady and Johanson, one of the most important firms at work in the state of Washington in the Post War era.

The school property is noteworthy, but not nominated for its association with John D. Kennedy (1851-1936), a real estate entrepreneur. Rather, the school is locally significant under Criterion A in the context of community planning and development as an amenity promoted by the proprietor of a subdivision. Kennedy's Addition to East Portland was formed of the once-extensive farm holdings of the developer which included pear and prune orchards. The developer's farmhouse is located immediately north of the school, on the opposite side of Simpson Street. Kennedy sold the school site to the School District in 1913 with the idea of enhancing the neighborhood's attractiveness to families. The school was in service from its opening in 1915 until its closure in 1977.

In the category of architecture, the ten-year historic period of significance, 1915-1925, encompasses construction of the original block, its early classroom additions, and the later gymnasium and auditorium, or assembly hall wings. In the category of community planning and development, the historic period of significance is marked from the date the nominated property was sold by the real estate entrepreneur to the School District expressly as an inducement to planned residential development, and is concluded in 1930, by which time John D. Kennedy's envisioned subdivision surrounding the school was substantially complete. After 1930, development consisted mainly of infill construction in the well-established neighborhood.

United States Department of the Interior
National Park ServiceNational Register of Historic Places
Continuation SheetSection number 8 Page 2**Statement of Significance (in one paragraph)**

The John D. Kennedy Elementary School was considered one of the first "New One-Story Schoolhouses" in the United States when it was built in 1915. It was designed by Portland's pre-eminent school architect, F.A. Nar amore. The structure embodies the distinctive characteristics of the Mediterranean style of architecture and is one of the city's outstanding examples of this style. John D. Kennedy was instrumental in locating a public school on this location and for that the school bears his name. Located within the building are four bas-relief panels which are reproductions of panels executed by Luca della Robbia for the cantoria of the cathedral in Florence, Italy in 1438. These were a gift of John D. Kennedy, and were on display at the Portland Art Museum for a month before they were installed in the building.

Kennedy School appeared in an article titled "The New One-Story Schoolhouse, Showing the Possibilities of Such Buildings as Developed on the Pacific Coast" in the Ladies Home Journal, April 1916. The trend at the time was to construct buildings that incorporated fire safety innovations. This type of school building was unique and at the time found only on the west coast. The two attributes of this specific trend in construction were the one-story construction, and the central 'play court and open air theater' to keep children away from "rapidly moving vehicles", which at that time were replacing the horse and carriage. The one-story construction was quieter, and provided for rapid exit in case of fire. It is interesting to note that the photograph in the article illustrated what it called the "First Unit" of the Kennedy School, and that at the time of its construction the central courtyard was not in place as yet.

The school design was one of the outstanding works of F.A. Nar amore. The Historic Resource Inventory of the City of Portland lists F.A. Nar amore as being the architect for twelve buildings in the inventory, all of them schools. The Kennedy school received the highest score of all the schools he designed. The scores were based on the following criteria: Design/Construction; Historical Value; Environment; Integrity; Intrinsic Value; Context. The Franklin High School built in 1914 was designed by Nar amore. It won recognition as one of the "ten most notable examples of architecture" in Portland in 1919

United States Department of the Interior
National Park ServiceNational Register of Historic Places
Continuation SheetSection number 8 Page 3

by the Oregon Chapter of the A.I.A. (Vaughan and Ferriday, Space Style and Structure, 1974). Franklin High School received a score of 63.5 in the Portland Inventory, and Kennedy School received a very high score of 77.5. 63.6 is the average score for the twelve schools designed by Nar amore listed in the Historic Resource Inventory of Portland. F. A. Nar amore designed a number of noteworthy schools in Portland, including Terwilliger, Shattuck, Ainsworth, Metropolitan Learning Center, Capitol Hill, Fulton Park and the Waverly Baby Home.

F.A. Nar amore designed buildings throughout the Northwest. He is listed by Victor Steinbrueck as being one of the architects responsible for the best quality Motor Age architecture in the Puget Sound area. (Vaughan and Ferriday; Space Style and Structure, 1974.)

The Kennedy School is a picturesque and an elegantly rendered example of Mediterranean architecture. The school's Mediterranean/Renaissance influence is expressed in the arcaded entry; round headed window and door openings; the low pitched roofs; an elaborately modillioned wooden cornice and corbelled frieze; and in the smooth stucco surfaces decorated with terra cotta belt courses and friezes. Typical of Mediterranean inspired buildings, the main attributes on the facade are composed in groups of threes. Three arches access the the recessed entrance doors which are flanked by three round headed windows, and highlighted by three square casement windows that light the upper gallery of the vestibule.

The central rectangular volume houses the entry and foyer and the principal's office. This is the most ornate block and is decorated with terra cotta belt courses, friezes and imposts in classical motifs: Boy and girl cherubs and floretts accent the arches; and open book and a flaming "lantern of knowledge" decorate the imposts; cartouche friezes with winged cherubs and fruit-laden cornucopias are set above the round-headed fenestrations. Both vertical and horizontal belt courses in the grapevine motif relieve this elevation. This block exhibits a low pitched complexly hipped roof with cresting on the ridges, and a projecting eave with a corbelled and modillioned cornice.

The well defined rectilinear block massing is another feature common to Mediterranean style of architecture. The elevations of the individual blocks are generally symmetrical, and the composition well balanced. The architect incorporated the existing grade into the design. The school is sited on a slight

United States Department of the Interior
National Park ServiceNational Register of Historic Places
Continuation SheetSection number 8 Page 4

rise which gains elevation to the south. On the facade the southern block of west facing classrooms is higher, and the windows are higher off the ground than they are on the northern classroom block. As a result the building is in harmony with its location, and the visual impact is pleasing and adds to the overall picturesque composition.

John D. Kennedy was the land owner and developer of Kennedy's First and Second Additions to East Portland. He owned and farmed the area between Killingsworth and Ainsworth, and N.E. 33rd and N.E. 42nd. He grew pears and prunes. He was instrumental in locating a public school at this location, and for that the school bears his name. He was born in Limerick, Ireland in 1851; came to this country in 1866. He settled at first in Baker, Oregon where he eventually opened a dry goods store. Subsequently he built his own building for the business. In 1881 he moved to Portland and went to work for the Fleischner-Mayor Dry Goods Co. He went into the real estate business and had an office on Union Avenue, and later moved his office to 329 S.W. Salmon. (Oregon Journal, obituary, December 18, 1936). In 1888 he built a farm house with Povey Brothers art glass in the double front doors. The residence and carriage house are all that remain of the farmstead, and are located directly across Simpson Street from Kennedy School.

In 1913 John D. Kennedy sold the land for the school to the school district. A portable building was erected soon after, and was used until the permanent building was erected.

On June 12, 1916 the official dedication ceremony of Kennedy School took place. All the students who were attending Kennedy at the time have their names placed in the cornerstone. A maypole was erected and young girls dressed in white dresses danced around the maypole to music supplied by the new record player.

John D. Kennedy donated four bas relief panels to the school. The panels illustrate the 150th Psalm. "The figures of youths are seen upon the panels, singing and dancing and playing upon various instruments. There is youth and buoyancy in each figure.

The modeling is exquisite. The whole is a beautiful interpretation of childhood." (Oregonian, Clipping from private collection, ca. September 1916.) The bas reliefs were commissioned by Mr. Kennedy, and cast in Boston by P.P. Caproni and Brother. The originals were finished in Florence in 1438. Luca della Robbia and his assistants worked nine years on the panels

United States Department of the Interior
National Park Service

National Register of Historic Places
Continuation Sheet

Section number 8 Page 5

before they were placed in the cantoria of the great cathedral in Florence. The artist produced eight panels, and four of these were reproduced for Kennedy School. The Kennedy panels were on display at the Portland Art Museum before they were placed in the school. The Oregonian noted that "it was the first important gift of art from a citizen to the public schools of Portland." (Oregonian, September 10, 1916).

The school was built in a rural setting. "N.E. 33rd Avenue was just an unpaved cowtrail..the area was still heavily wooded and the houses were well scattered." (Oregonian, February 4, 1965). The barn and chicken house of the Kennedy farm were torn down to make room for the Kennedy School. The actor, Clark Gable worked as an extra at the Baker Theater in Portland, and during the days he sometimes herded sheep by the school to the slaughterhouse one mile north. According to one account the principal used to let the children out of school to play with the lambs as they went by. (Oregon Journal, December 4, 1974).

The building was used as a school until 1977 when it was closed. The leaking roof has damaged plaster wall surfaces and wood floors. However the building retains a high degree of architectural integrity.

United States Department of the Interior
National Park Service

National Register of Historic Places
Continuation Sheet

Section number 9 Page 1

BIBLIOGRAPHY

L. R. Alderman, "The New One-Story Schoolhouse, Showing the Possibilities of Such Buildings as Developed on the Pacific Coast", Ladies Home Journal, April 1916:4.

City of Albany, Clark, Rosalind L. Oregon Style: Architecture 1840 to 1950's 1983.

City of Portland Buildings Bureau microfilm and card files.

Historic Resource Inventory, Portland, Oregon, 1981.

Jones, George H., Kennedy School Fifth Unit, plans, 1924, City of Portland Buildings Bureau Microfiche Collection.

The Oregon Sunday Journal, Portland September 10, 1916.
Reproductions of Bas-Reliefs, Gift to School.

The Oregonian, February 4, 1965. Old Grads, Teachers Plan Festivity at Kennedy School's Golden Fete.

The Oregonian February 27, 1979, Kennedy School Past Lives in Present Teacher.

Portland Public Schools, notes on Kennedy School.

San born Fire Insurance Map, Vol 12, pg. 1297; 1936.

Vaughan, Thomas, editor; and Ferriday, Virginia Guest, associate editor. Space Style and Structure, Building in Northwest America. 2 volumes. Portland: Oregon Historical Society 1974.

Whiffen, Marcus. American Architecture Since 1780: A Guide to the Styles. Cambridge, Massachusetts: The M.I.T. Press, 1969.

White, Agnes Kennedy; Scrapbook of Kennedy School clippings and notes.

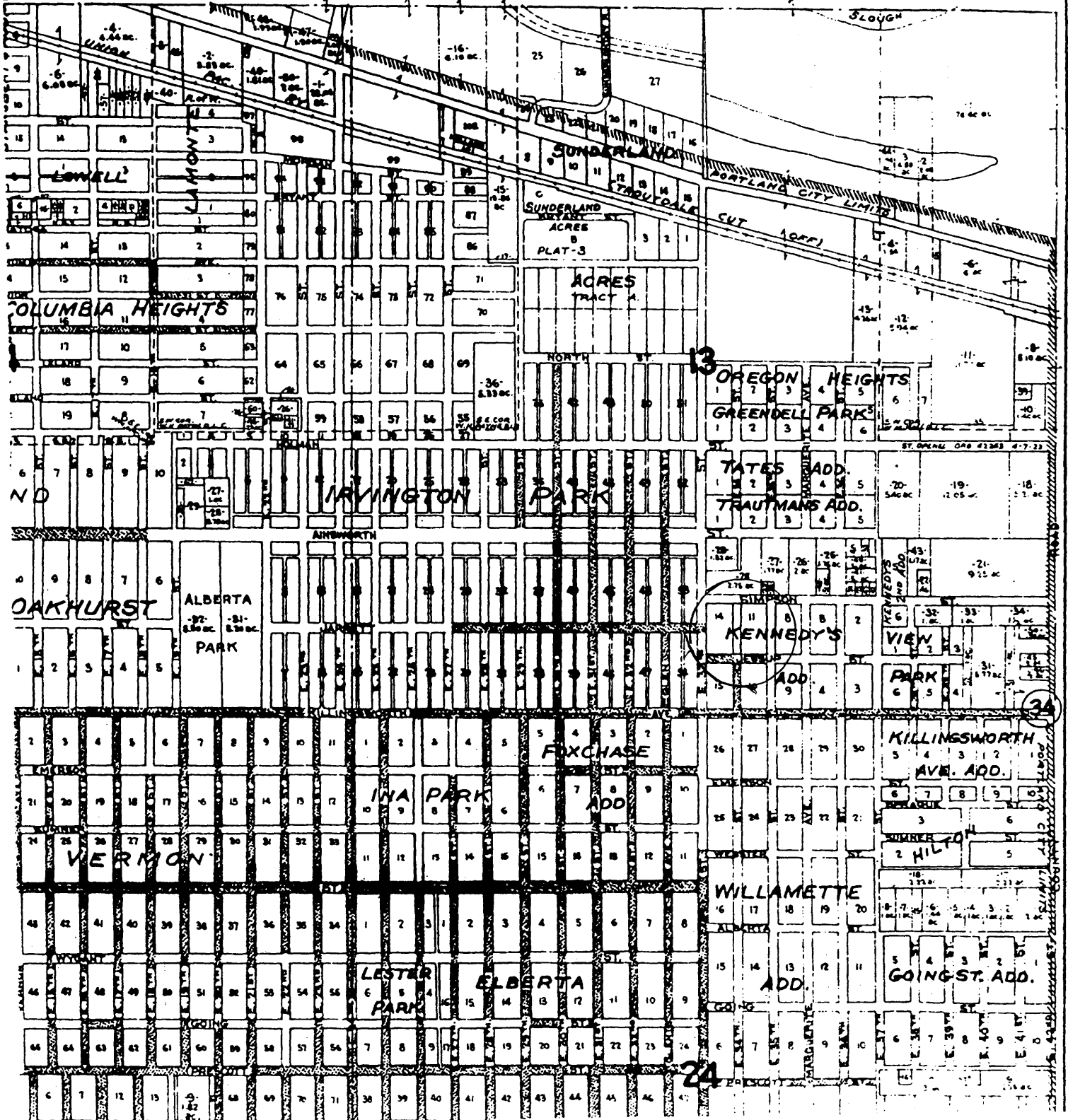
Interview: Agnes Kennedy White, December 10, 1987.

Richard Ritz, F.A.I.A., June 20, 1988. Information concerning the career of the architect, F.A. Naramore.

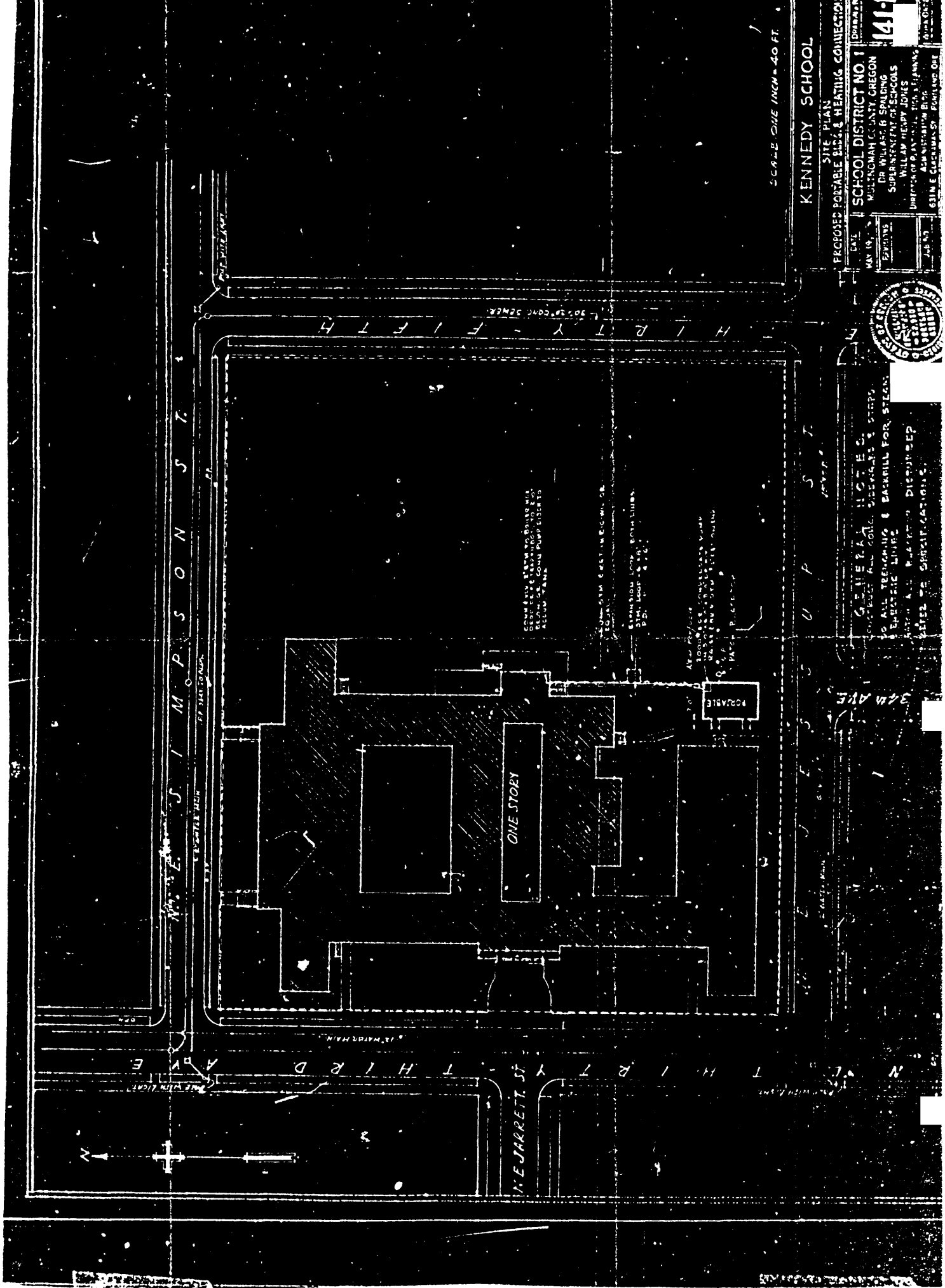
Woolbridge, Sally B., and Montgomery, Roger, A Guide to Architecture in Washington State, Seattle, University of Washington Press, 1980.

MULTNOMAH CO. ORE.

"METSKER THE MAP MAN"
930 1/2 PAC. AVE. TACOMA, WN. — 215 CH. OF COM. BLDG. PORTLAND ORE



Portland Buildings Bureau, Microfilm Records, Kennedy School Plot Plan, 1947



SCALE ONE INCH = 40 FT.

KENNEDY SCHOOL

SITE PLAN
 PROPOSED PORTABLE BLDG. & HEATING CONNECTION

SCHOOL DISTRICT NO. 1
 MULTNOMAH COUNTY, OREGON
 DR. WILLIAM B. SPALDING
 SUPERINTENDENT OF SCHOOLS
 WILLIAM HEAVY JONES
 DIRECTOR OF PLANNING
 631 N. E. GARDEN ST., PORTLAND, ORE.



GENERAL NOTES:
 1. ALL BRICKWORK & BACKFILL FOR STEPS
 2. ALL BRICKWORK & BACKFILL FOR STEPS
 3. ALL BRICKWORK & BACKFILL FOR STEPS
 4. ALL BRICKWORK & BACKFILL FOR STEPS

27

October 9, 1995

Carol D. Shull, Keeper
National Register of Historic Places
National Park Service
PO Box 37127
Washington DC 20013-7127



PARKS AND
RECREATION
DEPARTMENT

STATE HISTORIC
PRESERVATION OFFICE

Dear Ms. Shull:

This is to affirm the findings of the Oregon State Historic Preservation Office and the State Advisory Committee on Historic Preservation with regard to eligibility of the following property for inclusion in the National Register of Historic Places.

KENNEDY, JOHN D., ELEMENTARY SCHOOL (1915)
5736 NE Thirty-third Avenue
Portland, Multnomah County, Oregon

In accordance with Federal rules relating to property owner objections to listing of properties found by state review boards to meet criteria of the National Register, the John D. Kennedy Elementary School in Portland, Oregon was officially determined Register-eligible by you on October 13, 1988.

In June, 1993, the City of Portland acquired the property formerly owned by the Portland Public School System. The City has entered into an agreement with a private party for an adaptive reuse project that is consistent with the Secretary of the Interior's Standards for Preservation Projects. In light of this, and by the accompanying letter signed by the Honorable Vera Katz, Mayor, the City of Portland declares its legal ownership and requests that the property be listed in the National Register.

We look forward to the addition of this property to National Register listings in accordance with the present owner's instruction.

Sincerely,

James M. Hamrick, Deputy
State Historic Preservation Officer

cc: Judith L. Rees, Project Coordinator
Portland Development Commission
David Knowles, Director
Portland Bureau of Planning
Melissa Cole Darby
Michael McMenamin



1115 Commercial St. NE
Salem, OR 97310-1001
(503) 378-5001
FAX (503) 378-6447



City of Portland
Vera Katz
Mayor

October 3, 1995

Carol Shull, Keeper
National Register of Historic Places
National Park Service
PO Box 37127
Washington, DC 20013-7127

Dear Ms. Shull:

The City of Portland acquired legal ownership of the John D. Kennedy Elementary School, Lot 11 and 14, Kennedy's Addition to the City of Portland, Multnomah County, Oregon in June 1993. As the official representative for the City of Portland, I am requesting that the property be listed on the National Register of Historic Places as soon as possible.

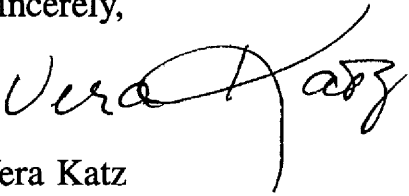
The nomination for the property was reviewed on February 18, 1988 by the Oregon State Advisory Committee on Historic Preservation and recommended for approval. However, the owner at that time, Portland Public School System, objected to its listing pursuant to 36 CFR Part 60.6. Because of this objection, the State requested a determination of eligibility; the property was determined eligible for the National Register in June of 1988.

October 3, 1995

Page 2

The City of Portland has entered into a Development and Disposition Agreement with a private party to restore and adaptively reuse the building and, therefore, we look forward to your response to this request for listing. If you should have any questions concerning this matter, please call Judith Rees at the Portland Development Commission (503) 823-3358.

Sincerely,



Vera Katz
Mayor

VK:fl

cc: Elisabeth Potter, State Historical Preservation Office
Judith Rees, PDC
David Nemo, PDC

State of Oregon
County of Multnomah

On this 28th day of September, 1995, before me personally appeared Vera Katz, Mayor, whose name is subscribed to this instrument, and acknowledged that she executed it.


Notary Public
My commission expires: *Aug. 2, 1997*





John D. Kennedy Elementary School
1915
5736 Ne 33rd
Portland, Multnomah Co. Oregon
Historic view. Used in the Ladies
Home Journal Article APRIL 1916.
Oregon Historical Society Collection

West Elevation
Original portion.
(note one room
school house
behind current
building).

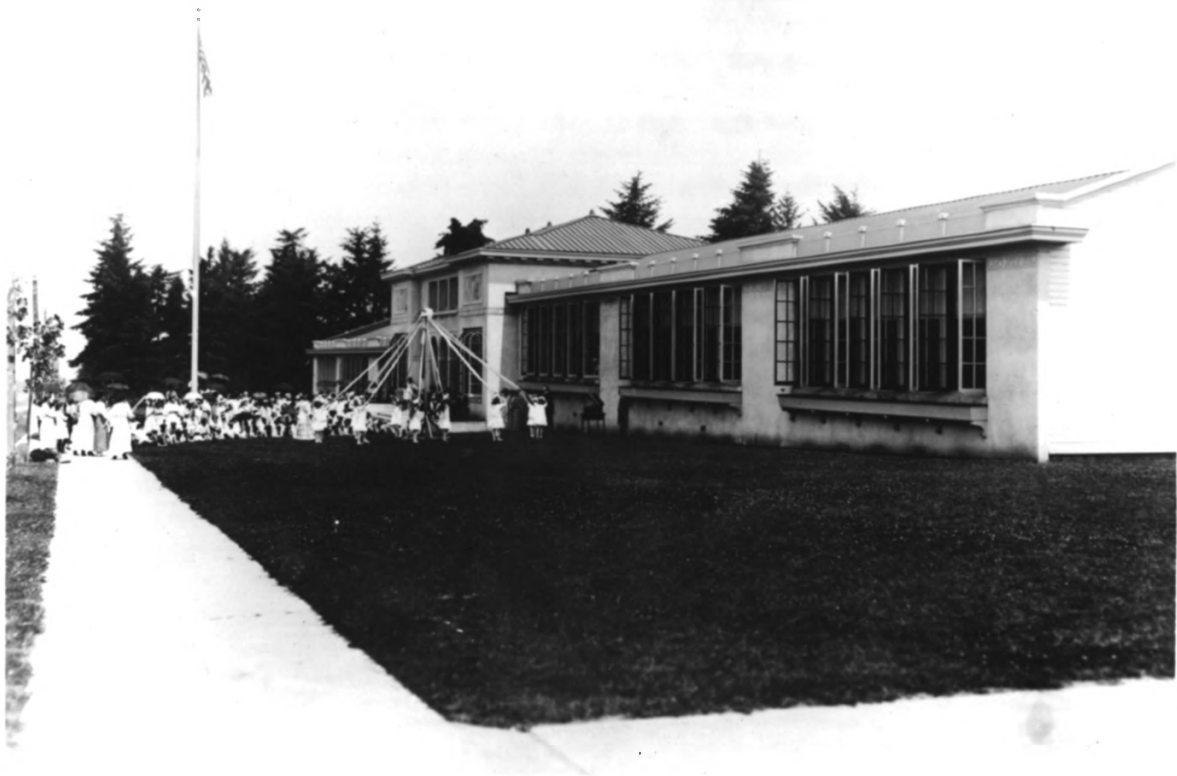
1 of 15

This photoprint is issued for reference use
only. It is not to be copied for resale.
Permission for use in a publication, film
or video production must be requested in
writing from the Photographs Librarian.

Photographs Department
Oregon Historical Society
1230 SW Park Avenue
Portland, Oregon 97205

NEGATIVE NUMBER ORHI 80966

JUN 27 1966
SOCIETY



John D. Kennedy Elementary School
1915

5736 Ne 33rd

2 OF 15

Portland, Multnomah County Oregon
Historic view; Dedication Ceremony
June 12, 1916.

Columbia Comm. Studio Photo.
Oregon Historical Society Collection
West Elevation.

This photoprint is issued for reference use
only. It is not to be copied for resale.
Permission for use in a publication, film
or video production must be requested in
writing from the Photographs Librarian.

Photographs Department
Oregon Historical Society
1230 SW Park Avenue
Portland, Oregon 97205

NEGATIVE NUMBER ORHI 80967



John D. Kennedy Elementary
School. 1915
5736 Ne 33rd
Portland, Multnomah
County, Oregon

Historic View

John D. Kennedy School. June 12, 1916.

dedication ceremony

3 of 5

Columbia Comm. Studio Photo.

This photoprint is issued for reference use only. It is not to be copied for resale. Permission for use in a publication, film or video production must be requested in writing from the Photographs Librarian.

Photographs Department
Oregon Historical Society
1250 SW Park Avenue
Portland, Oregon 97205

bbd
NEGATIVE NUMBER ORHS 80964

JUN 27 1988



John D Kennedy Elementary School
5736 Ne 33rd, PORTLAND
MULTNOMAH COUNTY, OR
unknown photographer

John D. Kennedy School. June 12, 1916 west elevation
dedication ceremony # of 15

Columbia Comm. Studio Photo.

This photoprint is issued for reference use only. It is not to be copied for resale. Permission for use in a publication, film or video production must be requested in writing from the Photographs Librarian.

Photographs Department
Oregon Historical Society
1230 S.W. Park Avenue
Portland, Oregon 97205

NEGATIVE NUMBER ORHI 80965

6

5671



KENNEDY, JOHN D., ALMANACRY SCHOOL (1915)
PORTLAND, MULTNOMAH COUNTY, OREGON.

John D. Kennedy . 5 of 15

Born Limerock, Ireland 1851.
Founded Kennedy Addition in NE
Portland.

Sold land to Portland School District
on which John D. Kennedy
school was built.

99 9

This ~~photo~~ print is issued for reference use
only. It is not to be copied for resale.
Permission for use in a publication, film
or video production must be requested in
writing from the Photographs Librarian.

Photography Department
Oregon Historical Society
1230 SW Park Avenue
Portland, Oregon 97205

NEGATIVE NUMBER ORHI 80963

JUN 27 1988



^{PLANNING}
J. D. Kennedy, School
5736 Ne 33rd

Portland, Multnomah County, Oregon

M. Darby photo
3327 Ne Simpson
Portland Ore 97211

Facade

6 of 15

JUN 27 1988



KENNEDY ELEMENTARY SCHOOL

NE 33rd AV

^{Administrative}
J. D. Kennedy, School

5736 NE 33rd

Portland, Multnomah County, Oregon

Mr. Darby photo

3327 NE Simpson

Portland Ore 97211

Facade

7 of 15

JUN 27 1988
8861 12 NPL

KENNEDY ELEMENTARY SCHOOL



^{MULTNOMAH}
J. D. Kennedy, School
5736 NE 33rd

Portland, MULTNOMAH COUNTY, OR ^{OREGON}

M. DARBY photo

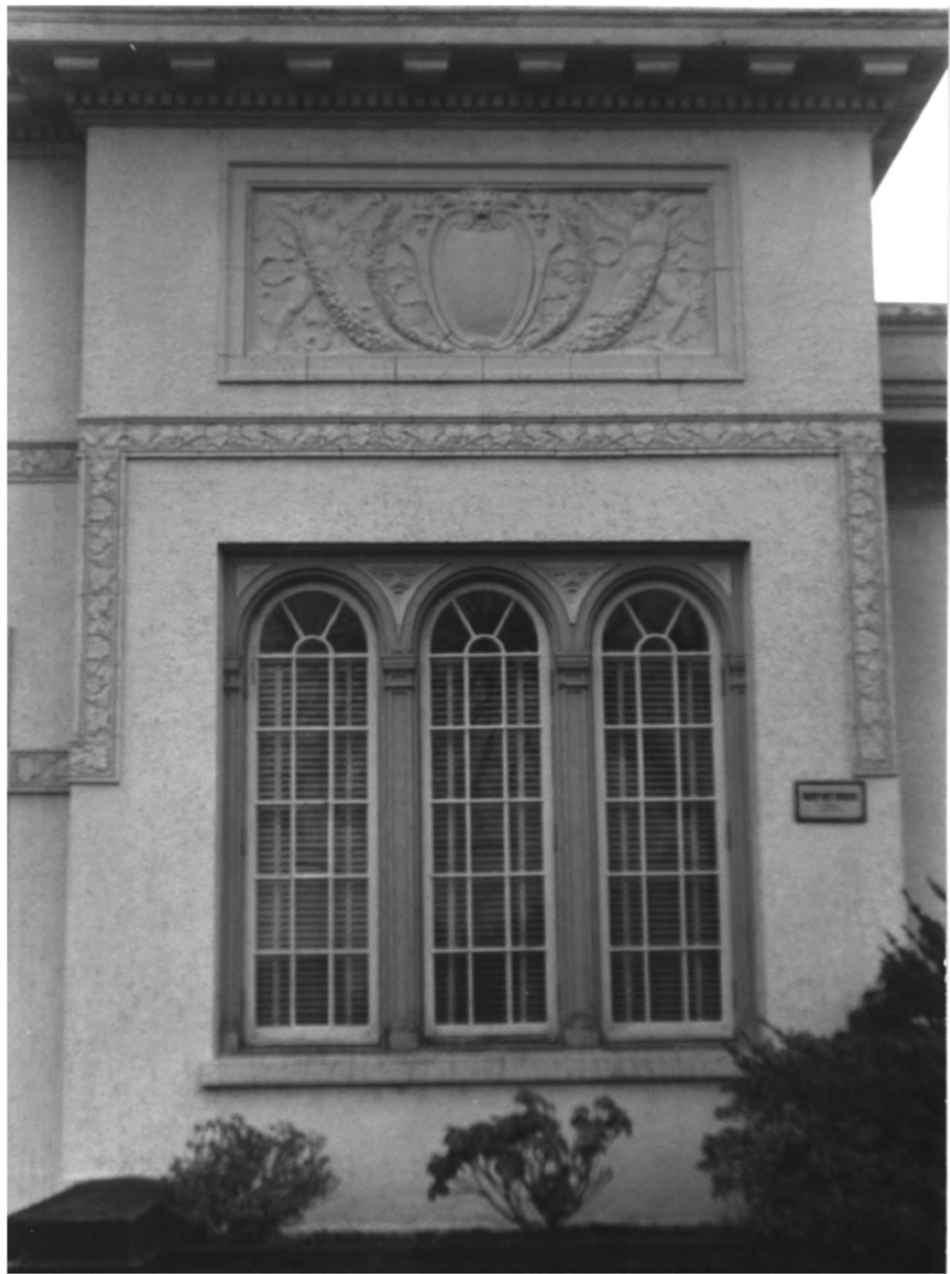
3327 NE SIMPSON

Portland Ore 97211

Entry Detail

8 of 15

JUN 27 1988
8861 12 NMF



^{MEMORANDUM}
J.D. Kennedy School

5736 Ne 33rd

Portland, MULTNOMAH COUNTY, OREGON
Facade Detail

m. Darby photo

3327 Ne Simpson

Portland, 97211

9 of 15

JUN 27 1988



JUN 27 1957

J. D Kennedy, ^{ALUMINUM} School
5736 NE 33rd
Portland, MULTNOMAH COUNTY, OREGON

m. Darby photo
3327 NE SIMPS ON
PORTLAND ORE 97211
North Entrance
Detail 10 of 15



^{PLANNING}
J. D. Kennedy, School
5736 Ne 33rd

Portland, ^{MULTNOMAH COUNTY, OREGON}

m Darby photo

3327 Ne Simpson

Portland Ore 97211

S. Elevation

11 of 15

JUN 27 1988
B-2M



^{MULTNOMAH COUNTY}
J. D. Kennedy School

5736 NE 33rd

Portland, MULTNOMAH COUNTY, OREGON

nearby photo

3327 NE Simpson

Portland Ore 97211

N. Elevation
(Auditorium)

12/15

JUN 28 1988
8-2 AMJ



J. D. Kennedy ^{Elementary} School
5736 NE 33rd

Portland, MULTNOMAH COUNTY

M. D. ARBY photo
3327 NE SIMPSON
Portland, ORE 97211

EAST Elevation

13 of 15

JUN 27 1982



MULTNOMAH COUNTY

J.D. Kennedy School

5736 NE 33rd

Portland, MULTNOMAH COUNTY, OREGON

NE CORNER of Building

Illustrating parapet of Auditorium

Melissa Darby photo

3327 NE Simpson

Portland, Ore 97211

14 of 15

8861
JUN 27
JF MR



^{ELEMENTARY}
J. D. Kennedy School
5736 Ne 33rd

Portland, MULTNOMAH COUNTY, OREGON

Boiler Room + Chimney Detail
East Elevation

Melissa Darby photo
3327 NE Simpson
Portland Ore
97211

15 of 15