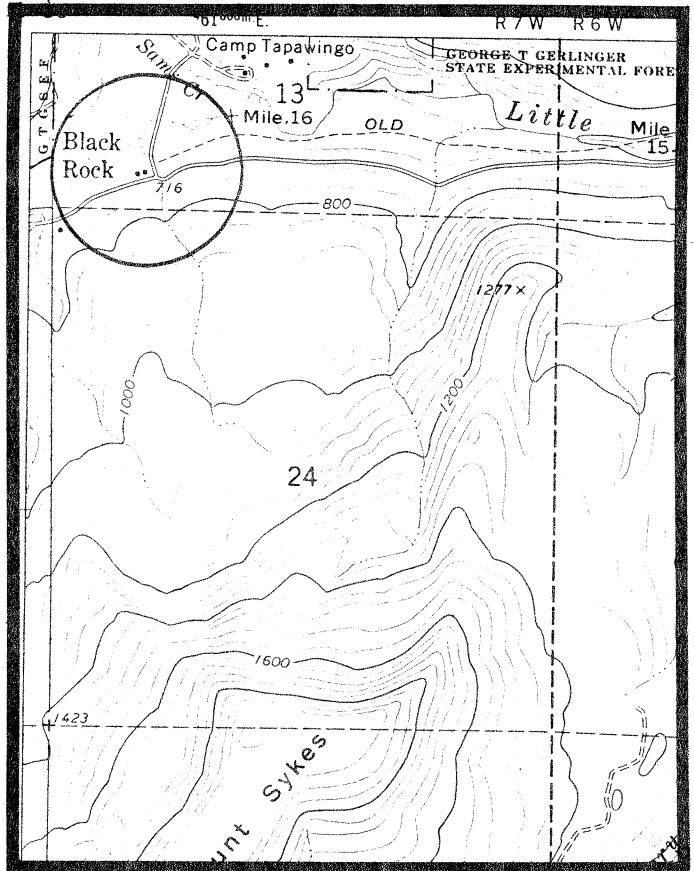
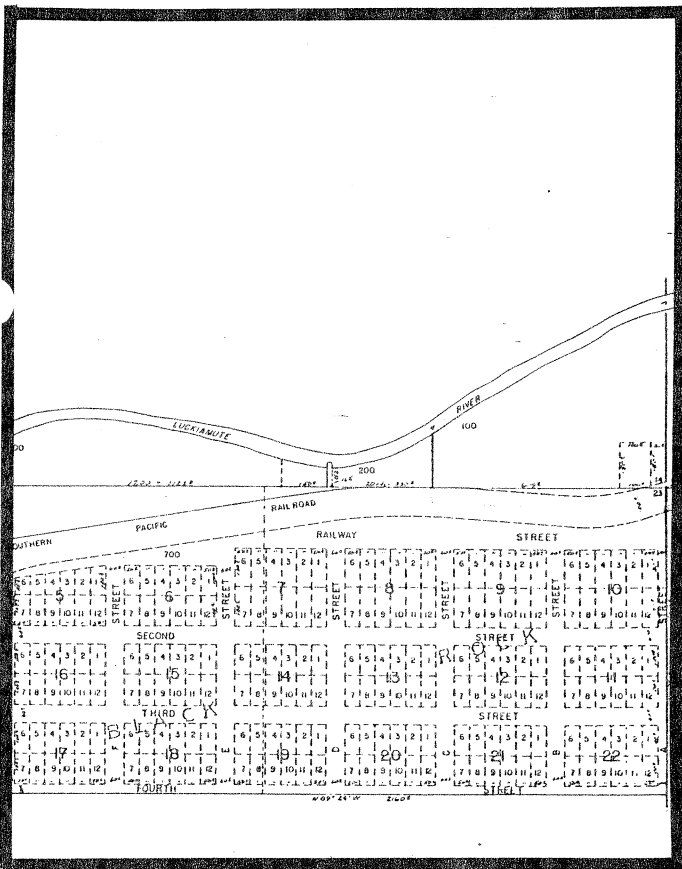


OREGON INVENTORY OF HISTORIC PROPERTIES
 HISTORIC RESOURCE SURVEY FORM
 POLK COUNTY

Historic Name of Townsite: BLACK ROCK
 Common Name: BLACK ROCK
 Location: 3 MILES W. OF FALLS CITY ON BLACK ROCK ROAD
 Date Established: c. 1904-1905
 Founder(s): LOUIS GERLINGER
 T/R/S: 8/7/23A
 Quadrangle: FALLS CITY, OREGON (7.5')

Resource Type: Bldg. Structure District Site Object

Setting: THE HISTORIC BLACK ROCK TOWNSITE IS LOCATED SEVERAL MILES WEST OF FALLS CITY IN THE FOOTHILLS OF THE CASCADES, BETWEEN THE LITTLE LUCKIAMUTE RIVER AND THE RAILROAD TRACKS. THE SITE AND SURROUNDING AREA ARE FORESTED.



Noteworthy Landscape Features: SITE ENTIRELY FORESTED

SHPO Inventory No.: 312

Statement of Significance (Historical and/or architectural importance, dates, events, person, contexts), use additional sheets if necessary:

Common Name: Black Rock

Inventory Number: 85

Historic Name: Black Rock

T/R/S: T8S, R7W, NW 1/4 S23

Quadrangle: Falls City

Black Rock was the only "company town" built in Polk County.

Located on the Little Luckiamute River two and one-half miles west of Falls City, Black Rock was initially established between 1904 and 1905 by Louis Gerlinger. In 1903, Gerlinger purchased 7,000 acres of timber in and around the Black Rock site to support his logging operations and Dallas lumber mill. By 1905 the community had grown sufficiently to have a post office, established November 17, 1905, with Gerlinger as postmaster.

From 1905 until 1913 Black Rock witnessed rapid growth as logging companies located in or near the growing community in order to access the vast amounts of virgin timber in western Polk County. By 1910, Black Rock supported three other timber companies: operating along side Gerlinger's Dallas Lumber Company were the Great Western Lumber Company, Falls City Lumber Company and the Charles K. Spaulding Logging Company. On July 1, 1910, the plat for Black Rock was recorded by the Charles Spaulding Logging Company.

Population estimates for Black Rock between 1910 and 1911 run between 1300 and 1500. At this time the town included three general stores, a drug store, barber shop, butcher shop, restaurant, saloon and train depot.

By 1913 the timber resources had been depleted to the point where the timber companies began to dismantle their operations and move out of the region. From Great Western's removal in 1913, until the closing of the post office on October 15, 1943, the community steadily declined.

Bibliography: Corning, Oregon History, 1956.
MacArthur, Oregon Geographic Names, 1973.
PCHS, History of Polk County Oregon, Taylor 1987.
Polk County Records Book